

BERING/ZANKER BUSINESS PARK

2345 BERING DRIVE, SAN JOSE, CALIFORNIA | ±8,200 SF FOR LEASE



For more information, please contact:

Liam Martin
Associate
+1 408 436 3619
liam.martin@cushwake.com
LIC #02081625

Steve Pace
Executive Director
P +1 408 615 3419
steve.pace@cushwake.com
LIC #00817396

Dan Hollingsworth
Executive Managing Director
P +1 408 615 3431
dan.hollingsworth@cushwake.com
LIC #01117716



DOLLINGER PROPERTIES



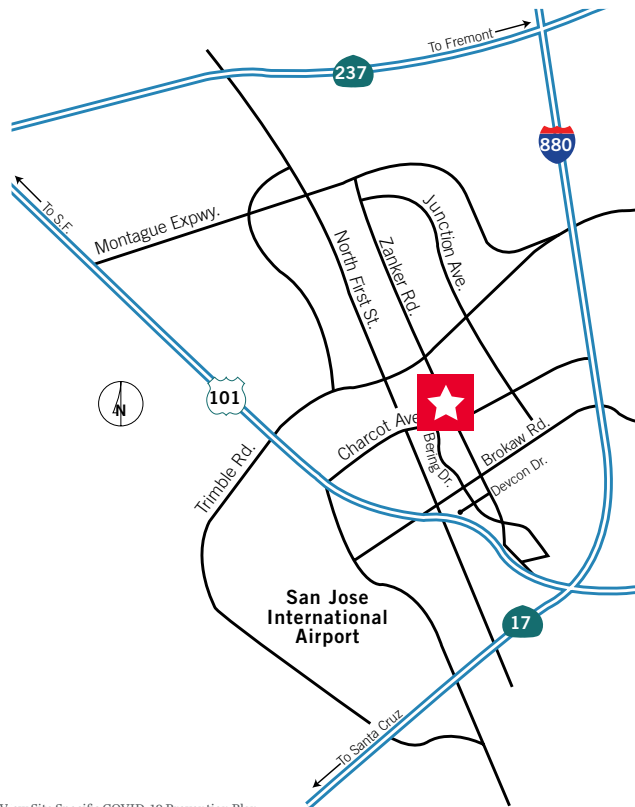
**CUSHMAN &
WAKEFIELD**

BERING/ZANKER BUSINESS PARK

San Jose, California

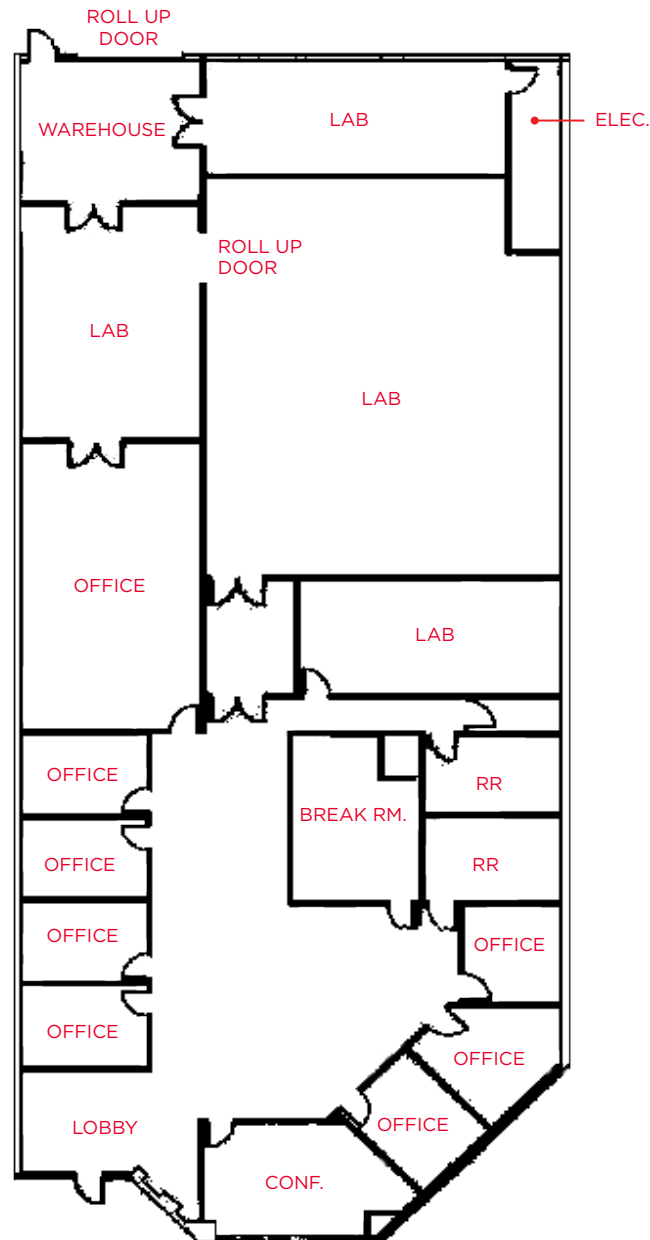
Highlights

- Office/R&D
- High Image North San Jose location
- 4/1,000 Parking
- Easy Access to Highways 101 & 880
- Walk to Light Rail Station



V:\Site Specific\COMPS 10 Destination Plan

Floor Plan



2345 BERING DRIVE, SAN JOSE

±8,200 SF

- **Power:**
400 Amps @ 480 Volts
- **100% HVAC**
- **Description**
Lobby, Perimeter Privates, Breakroom, Large Conference Room, Labs, Warehouse & Grade Level Loading

BERING/ZANKER BUSINESS PARK

San Jose, California

Public Transit and Amenities



[View Site Specific COVID-19 Prevention Plan](#)

©2020 Cushman & Wakefield. All rights reserved. The information contained in this communication is strictly confidential. This information has been obtained from sources believed to be reliable but has not been verified. NO WARRANTY OR REPRESENTATION, EXPRESS OR IMPLIED, IS MADE AS TO THE CONDITION OF THE PROPERTY (OR PROPERTIES) REFERENCED HEREIN OR AS TO THE ACCURACY OR COMPLETENESS OF THE INFORMATION CONTAINED HEREIN, AND SAME IS SUBMITTED SUBJECT TO ERRORS, OMISSIONS, CHANGE OF PRICE, RENTAL OR OTHER CONDITIONS, WITHDRAWAL WITHOUT NOTICE, AND TO ANY SPECIAL LISTING CONDITIONS IMPOSED BY THE PROPERTY OWNER(S). ANY PROJECTIONS, OPINIONS OR ESTIMATES ARE SUBJECT TO UNCERTAINTY AND DO NOT SIGNIFY CURRENT OR FUTURE PROPERTY PERFORMANCE.