

SANTO PLAZA

2544 & 2550 Sheridan Blvd, Denver, CO 80212

FOR LEASE



PROPERTY DESCRIPTION

Retail space available in Santo Plaza - Sloan's Lake Location

PROPERTY HIGHLIGHTS

- 1 Unit available
- 1,512 SF
- Rate \$20.00/SF + NNN
- NNN's \$9.45/SF
- High traffic area
- Excellent street visibility

OFFERING SUMMARY

Building Size:	8,559 SF
Available SF:	1,512 SF
Lease Rate:	\$20.00 SF/yr (NNN)

TRAFFIC COUNT

Sheridan Blvd. S of W. 22nd Ave	42,250/day
Sheridan Blvd. S of W. 25th Ave	35,300/day
Sheridan Blvd. N of W. 28th Ave	34,500/day

LOUIS LEE

303.454.5416
llee@antonoff.com

The information above was obtained from sources we deem reliable; however, no warranty or representation, expressed or implied, is made as to the accuracy of the information contained herein. Any reliance on this information is solely at your own risk.

SANTO PLAZA

2544 & 2550 Sheridan Blvd, Denver, CO 80212

FOR LEASE



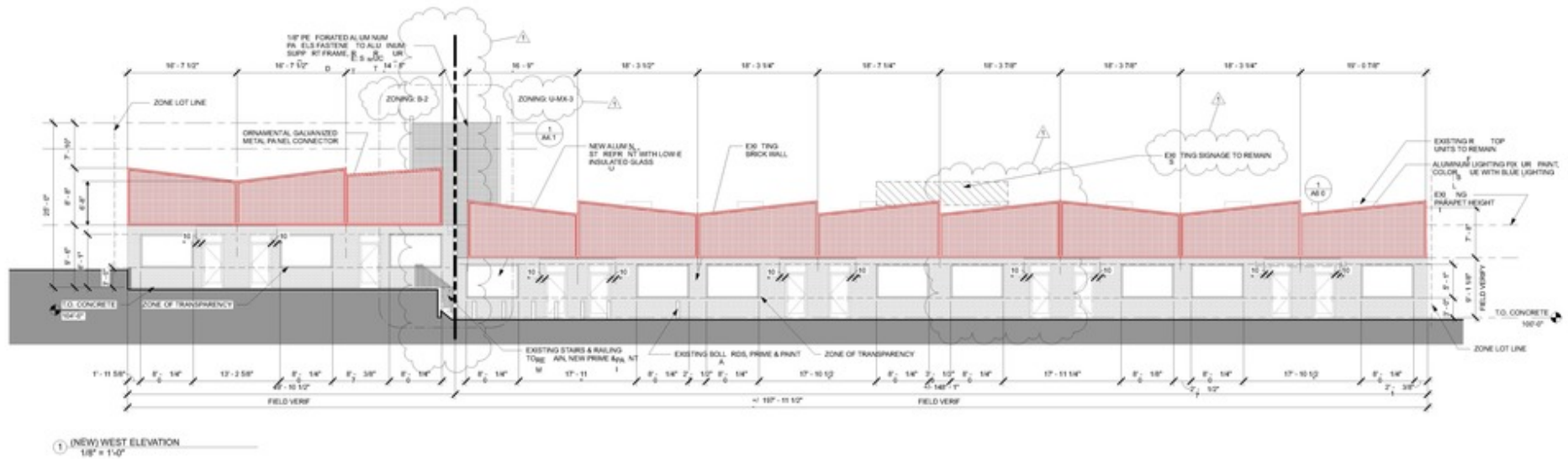
LOUIS LEE
303.454.5416
llee@antonoff.com

The information above was obtained from sources we deem reliable; however, no warranty or representation, expressed or implied, is made as to the accuracy of the information contained herein. Any reliance on this information is solely at your own risk.

SANTO PLAZA

2544 & 2550 Sheridan Blvd, Denver, CO 80212

FOR LEASE



LOUIS LEE
303.454.5416
llee@antonoff.com

The information above was obtained from sources we deem reliable; however, no warranty or representation, expressed or implied, is made as to the accuracy of the information contained herein. Any reliance on this information is solely at your own risk.