

FOR LEASE

DUPONT CORPORATE CENTER

BUILDING 3

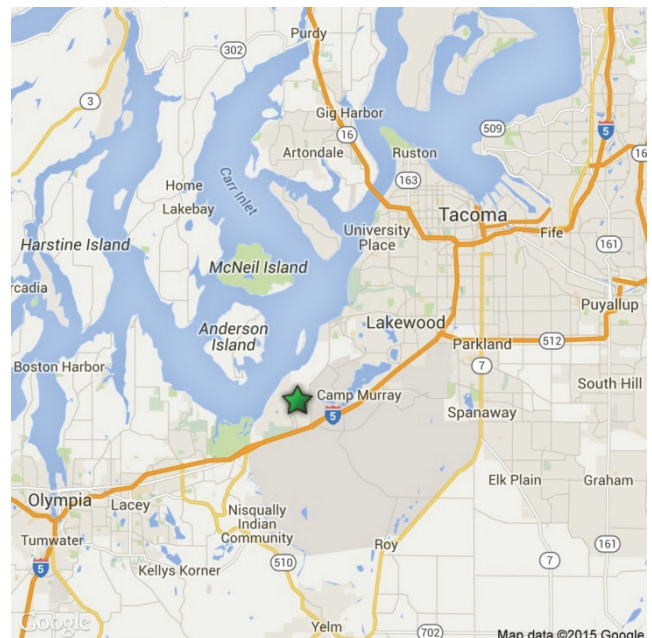
2800 CENTER DRIVE

DuPont, Washington 98327



PROPERTY INFORMATION

- + 135,060 Total Office RSF on 2 Floors
- + Built in 1994
- + From 66,432 SF to 459,060 SF available in two buildings
- + \$13.50 (NNN: \$6.00 PSF/Yr.)
- + Parking Ratio up to 10 per 1,000 SF
- + Back-Up Generator
- + Heavy Power Capacity (Former Intel Lab) with Discounted Utility Rate
- + Plug and Play condition with furniture systems available and in place on 2nd floor



CONTACT US

MONTE DECKER, CCIM

Vice President
+1 253 596 0041
monte.decker@cbre.com

DAN STUTZ

Senior Vice President
+1 206 292 6097
dan.stutz@cbre.com

EVAN STEINRUCK

Associate
+1 206 292 6022
andrew.hitchcock@cbre.com

www.cbre.com/tacoma

CBRE


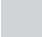
FOR LEASE DUPONT CORPORATE CENTER



FLOOR PLANS

Floor 1 | ±68,627 RSF Available



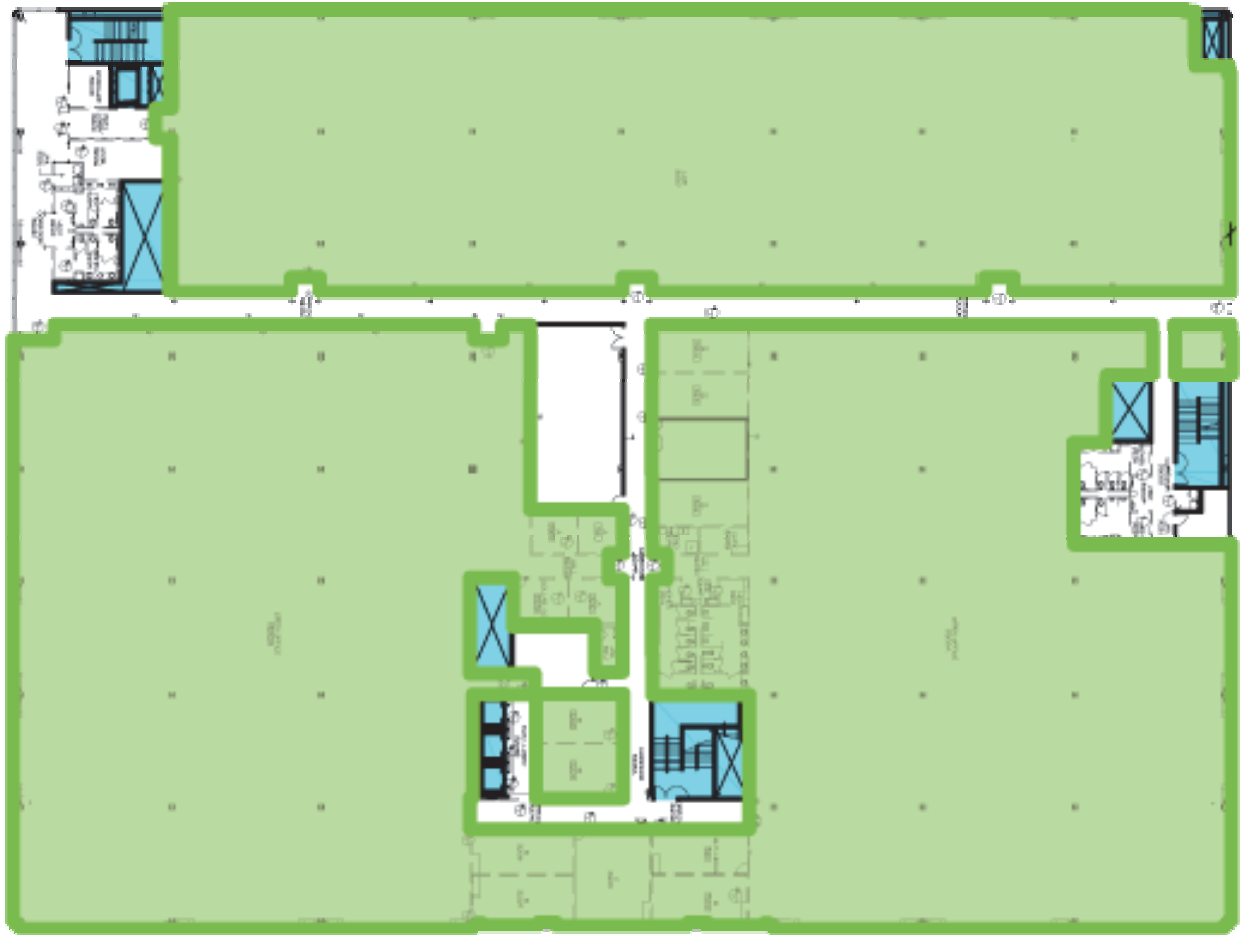
-  Available
-  Occupied







FLOOR PLANS

Floor 2 | ±66,432 RSF Available



-  Available
-  Occupied



FOR LEASE DUPONT CORPORATE CENTER

BUILDING 3
2800 CENTER DRIVE
DuPont, Washington



AERIAL MAP



CONTACT US

MONTE DECKER, CCIM

Vice President
+1 253 596 0041
monte.decker@cbre.com

DAN STUTZ

Senior Vice President
+1 206 292 6097
dan.stutz@cbre.com

EVAN STEINRUCK

Associate
+1 206 292 6022
andrew.hitchcock@cbre.com

© 2015 CBRE, Inc. This information has been obtained from sources believed reliable. We have not verified it and make no guarantee, warranty or representation about it. Any projections, opinions, assumptions or estimates used are for example only and do not represent the current or future performance of the property. You and your advisors should conduct a careful, independent investigation of the property to determine to your satisfaction the suitability of the property for your needs.

Photos herein are the property of their respective owners and use of these images without the express written consent of the owner is prohibited. gcr 09/23/2015

www.cbre.com/tacoma

CBRE