



CUSHMAN & WAKEFIELD

FOR LEASE

1097 Sneath Lane

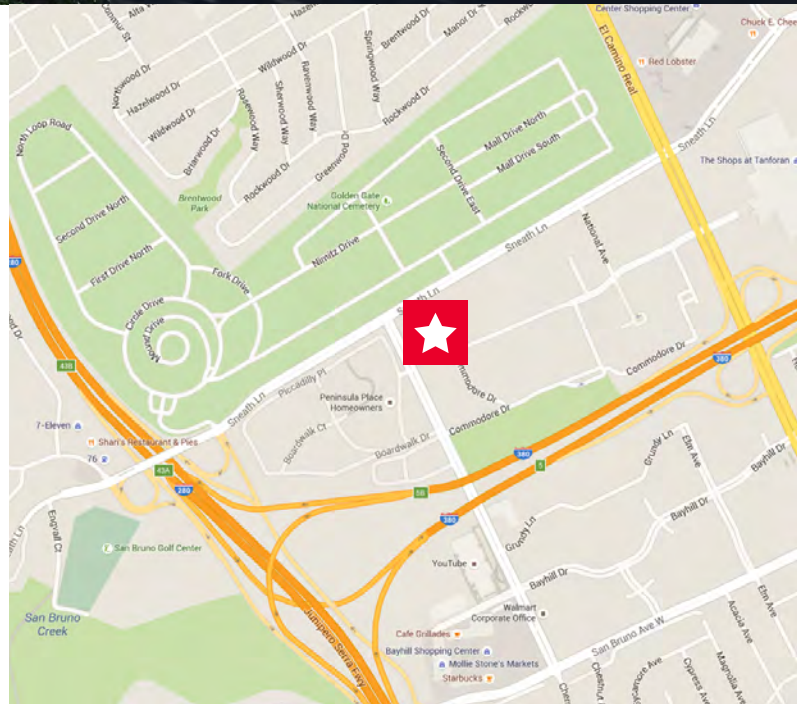
San Bruno, California



±2,220 SF of Office Space

Property Highlights

- HVAC
- 2/1000 Parking
- Close proximity to BART, Caltrain, SamTrans, Hwy. 101, 280 and 380
- Available 12/1/2019
- Floor plans on reverse
- Lease Rate: \$2.00 NNN



Matt Squires

Executive Managing Director
+1 650 401 2136
matt.squires@cushwake.com
LIC #01248804



Jason Cranston

Senior Vice President
+1 650 577 2991
jason.cranston@cbre.com
LIC #01253892

1350 Bayshore Hwy., Suite 900
Burlingame, CA
main +1 650 347 3700
fax +1 650 347 4307
cushmanwakefield.com



**CUSHMAN &
WAKEFIELD**

FOR LEASE

1097 Sneath Lane

San Bruno, California

Site Plan



Matt Squires
Executive Managing Director
+1 650 401 2136
matt.squires@cushwake.com
LIC #01248804



Jason Cranston
Senior Vice President
+1 650 577 2991
jason.cranston@cbre.com
LIC #01253892

1350 Bayshore Hwy., Suite 900
Burlingame, CA
main +1 650 347 3700
fax +1 650 347 4307
cushmanwakefield.com



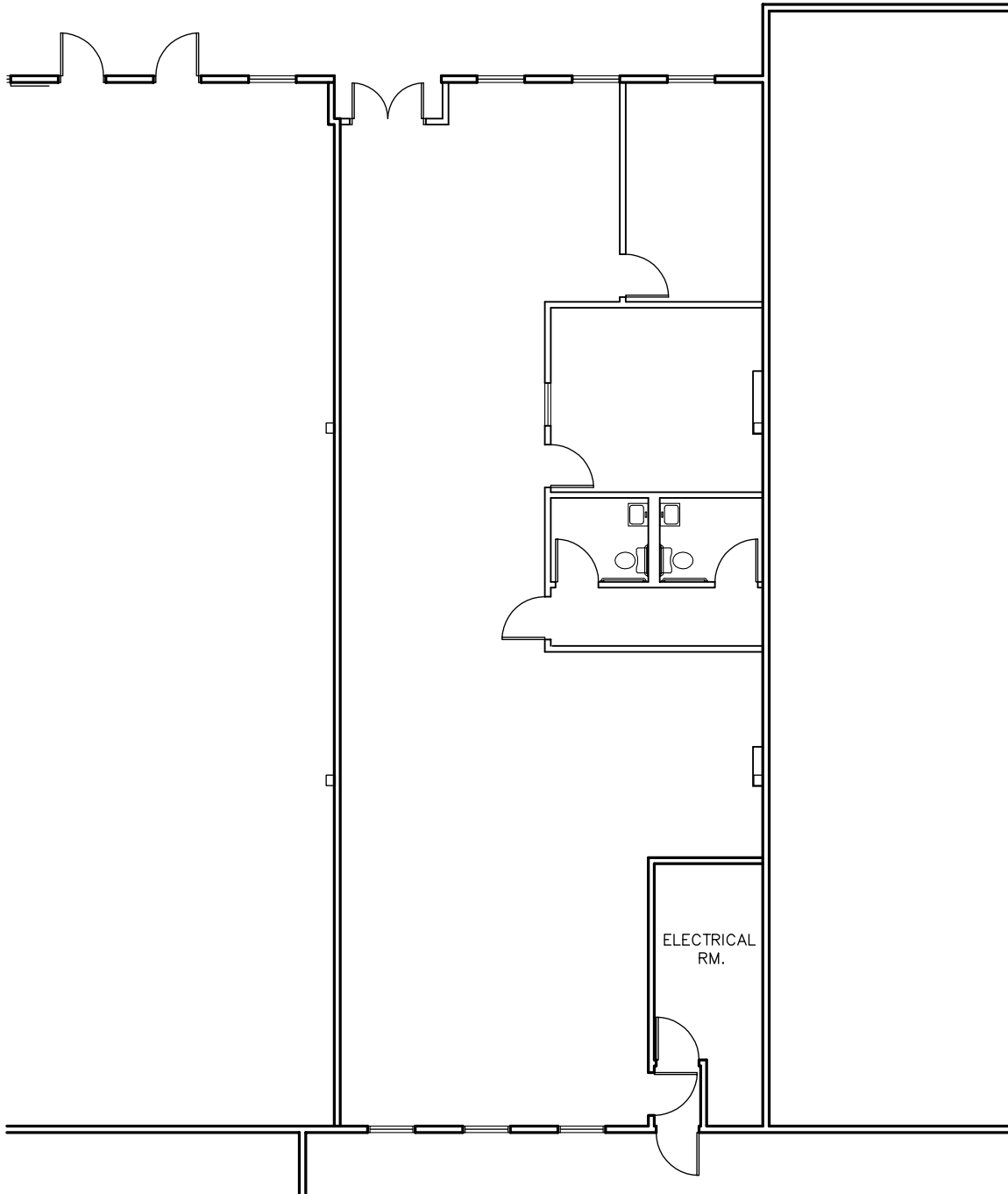
CUSHMAN & WAKEFIELD

FOR LEASE

1097 Sneath Lane

San Bruno, California

Floor Plan



Matt Squires
Executive Managing Director
+1 650 401 2136
matt.squires@cushwake.com
LIC #01248804



Jason Cranston
Senior Vice President
+1 650 577 2991
jason.cranston@cbre.com
LIC #01253892

1350 Bayshore Hwy., Suite 900
Burlingame, CA
main +1 650 347 3700
fax +1 650 347 4307
cushmanwakefield.com