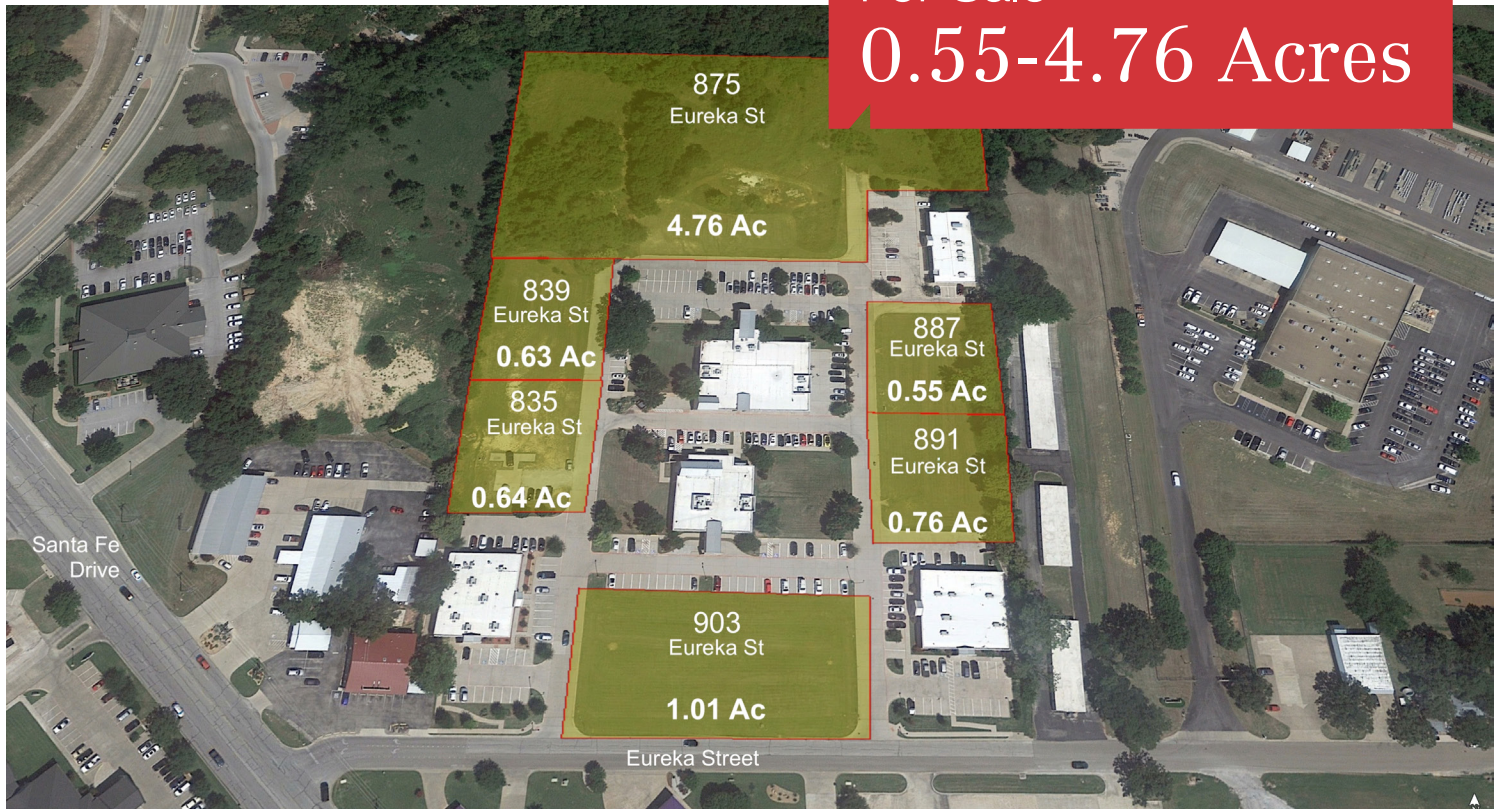


For Sale  
0.55-4.76 Acres



## 835-903 Eureka Street

Weatherford, TX 76086

### Property Features

- Off of Santa Fe Drive
- Adjacent to Medical City Weatherford
- Zoned C-1 Commercial
- Will Build-To-Suit
- Surgery Center in the Medical Office Park
- Flexible Terms
- Easy Access to Major Thoroughfares



**Rick Hopwood, CPM**

817 872 3913  
rhopwood@robertlynn.com

**Colt Power, SIOR, CCIM**

817 872 3905  
cpower@robertlynn.com



THE INFORMATION CONTAINED HEREIN HAS BEEN GIVEN TO US BY THE OWNER OF THE PROPERTY OR OTHER SOURCES WE DEEM RELIABLE. WE HAVE NO REASON TO DOUBT ITS ACCURACY, BUT WE DO NOT GUARANTEE IT. ALL INFORMATION SHOULD BE VERIFIED PRIOR TO PURCHASE OR LEASE.

1200 Summit Avenue Suite 800  
Fort Worth TX 76102  
817 885 8333

[nairl.com](http://nairl.com)

For Sale  
0.55-4.76 Acres

835-903 Eureka Street  
Weatherford, TX 76086

