



## Property Highlights

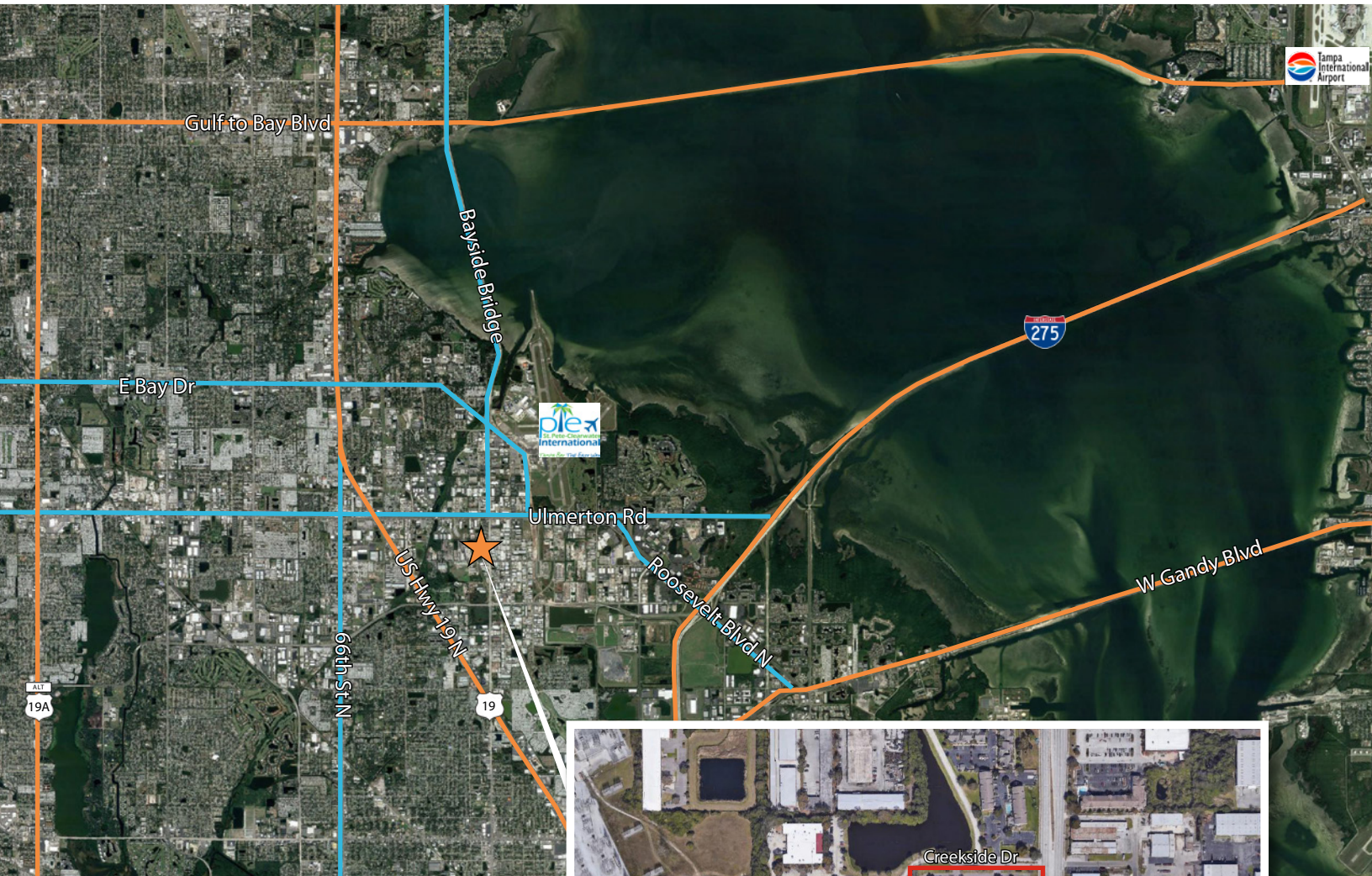
- 5,191 sf available
- Parking ratio 4.0/1,000 sf
- Frontage along 49th Street N, just south of Ulmerton Road
- Easy access to US 19 & I-275
- Professionally managed

**FOR LEASE****Michael Coppola**

Associate

813.444.0625

[michael.coppola@avisonyoung.com](mailto:michael.coppola@avisonyoung.com)



### Prime Location

- Pinellas/Gateway
- Prime Pinellas location with park amenities
- 11 minutes to the Howard Frankland Bridge
- 15 minutes to the Gandy Bridge
- Convenient access to Saint Petersburg-Clearwater International Airport (1.9 miles) and Tampa International Airport (15.0 miles)



**Michael Coppola**

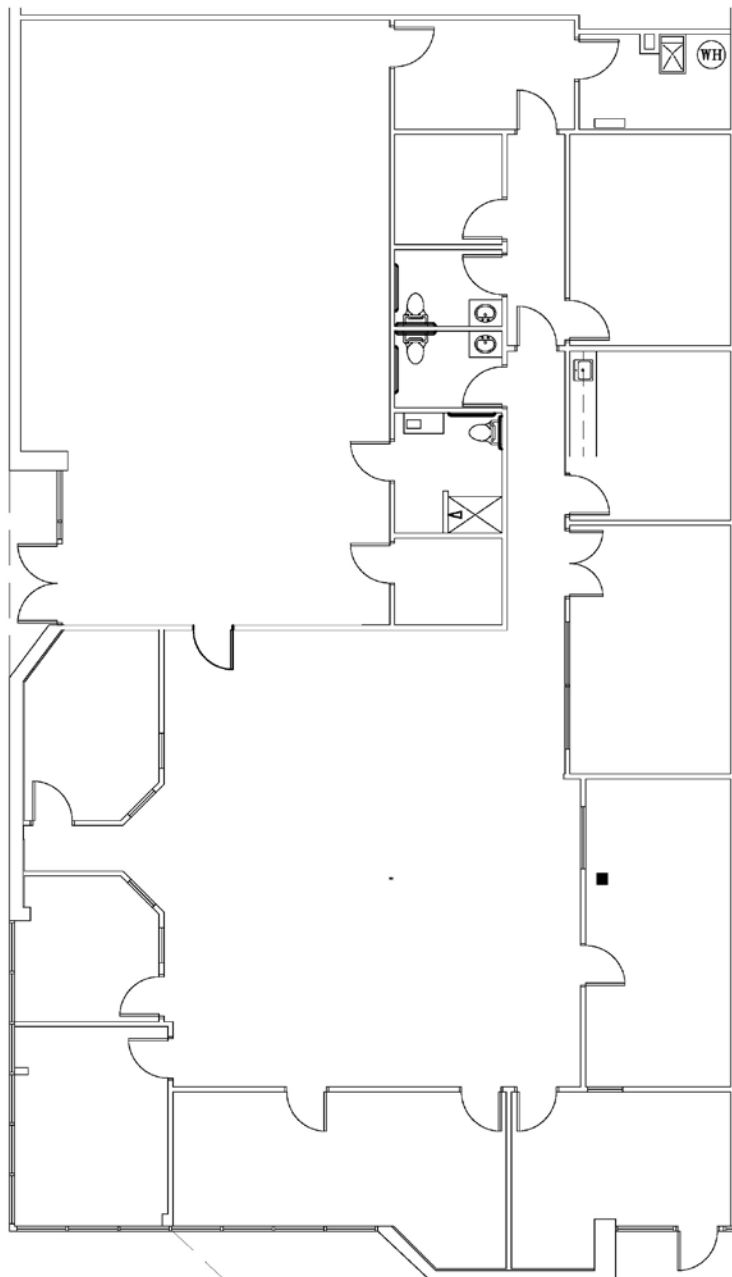
Associate

813.444.0625

[michael.coppola@avisonyoung.com](mailto:michael.coppola@avisonyoung.com)

**Suite 4911-A**

5,191 sf



**Michael Coppola**  
Associate  
813.444.0625  
michael.coppola@avisonyoung.com