

FOR LEASE

FORMER NW LAB BLDG

241

S HOLDEN ST

Seattle, WA 98108



BUILDING INFORMATION

- + Secure fenced yard/parking
- + Zoning: IG2U/65
- + Potential uses: food, lab, research and development, production, art studio, etc.
- + ±17,100 SF available
 - Divisible to 6,000 - 11,000 SF
- + Served by Metro #132 (Burien to Downtown)
- + Easy access to Hwy 99, 509, and I-5
- + Rates: \$0.95-1.10/SF NNN
- + 11,100 SF comprised of:
 - + Ground floor: ± 6,600 SF
 - Flex/ warehouse space
 - 1 Grade Door
 - + Second Floor: ± 4,500 SF
 - Mix of private offices and open space
 - + Third Floor: ± 6,000 SF
 - Can be leased separately
 - Creative open loft space with separate entrance
 - New floors, windows, lighting, and restroom added



CONTACT US

BRYAN HESTER

Vice President

+1 206 292 6079

bryan.hester@cbre.com

HANS VIESER

Associate

+1 206 442 2741

hans.vieser@cbre.com

CBRE, Inc.

1420 5th Ave, Suite 1700

Seattle, WA 98101

206 292 1600

www.cbre.us/seattle

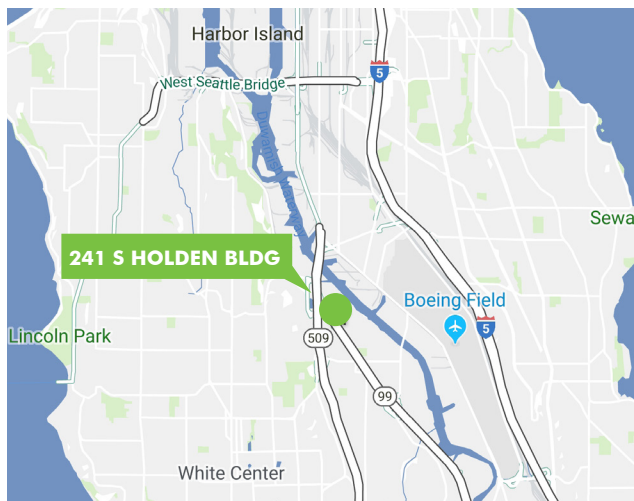
CBRE

FOR LEASE 241 S HOLDEN BLDG

241
S HOLDEN ST
Seattle, WA 98108



BUILDING LOCATION & PHOTOS



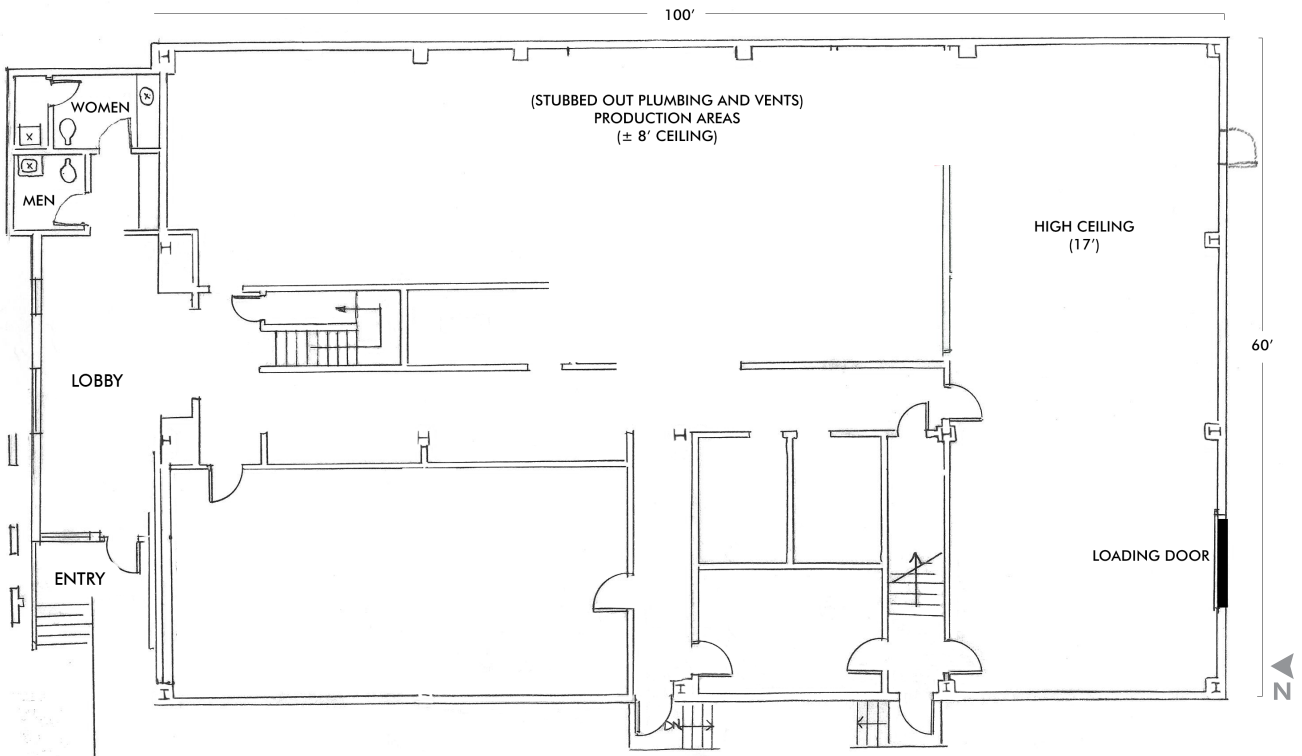
FOR LEASE 241 S HOLDEN BLDG

241
S HOLDEN ST
Seattle, WA 98108



FLOOR PLANS

1st Floor



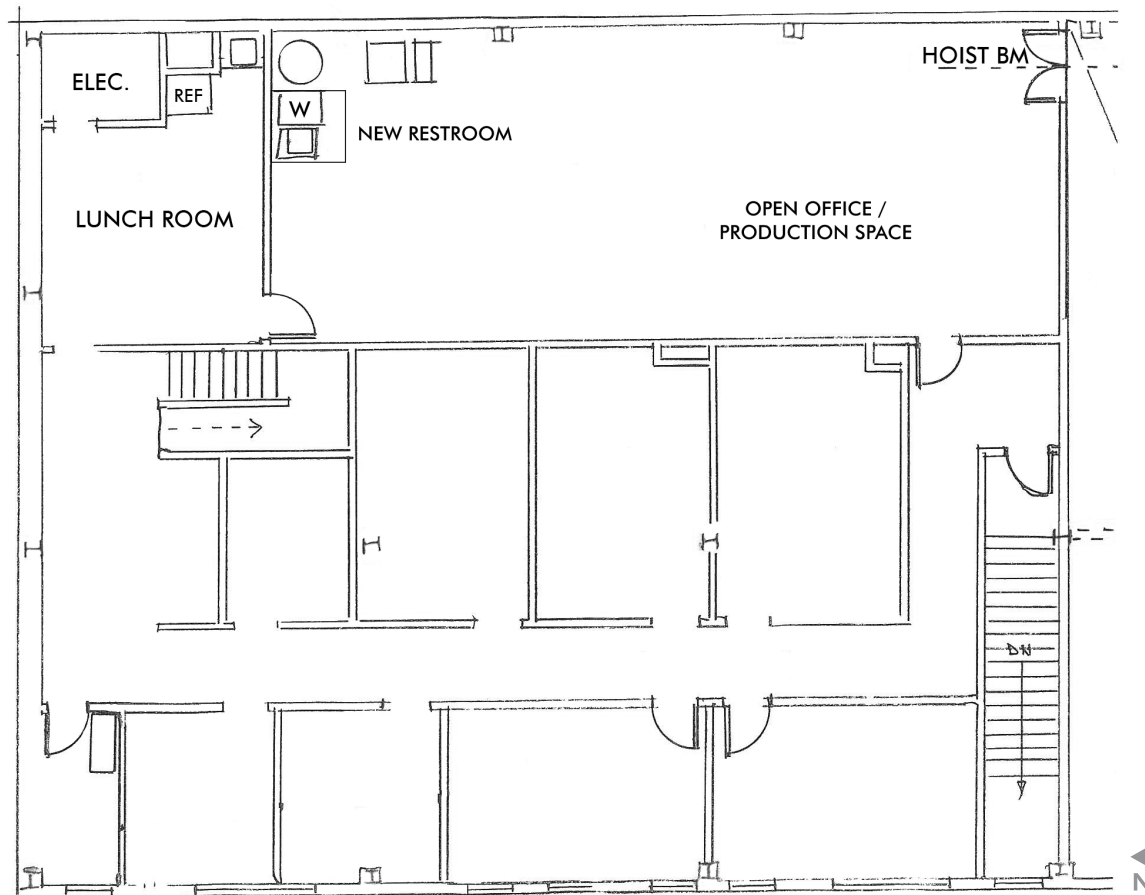
FOR LEASE 241 S HOLDEN BLDG

241
S HOLDEN ST
Seattle, WA 98108



FLOOR PLANS

2nd Floor



© 2019 CBRE, Inc. This information has been obtained from sources believed reliable. We have not verified it and make no guarantee, warranty or representation about it. Any projections, opinions, assumptions or estimates used are for example only and do not represent the current or future performance of the property. You and your advisors should conduct a careful, independent investigation of the property to determine to your satisfaction the suitability of the property for your needs. Photos herein are the property of their respective owners and use of these images without the express written consent of the owner is prohibited. CBRE and the CBRE logo are service marks of CBRE, Inc. and/or its affiliated or related companies in the United States and other countries. All other marks displayed on this document are the property of their respective owners. GH 3.5.2019