

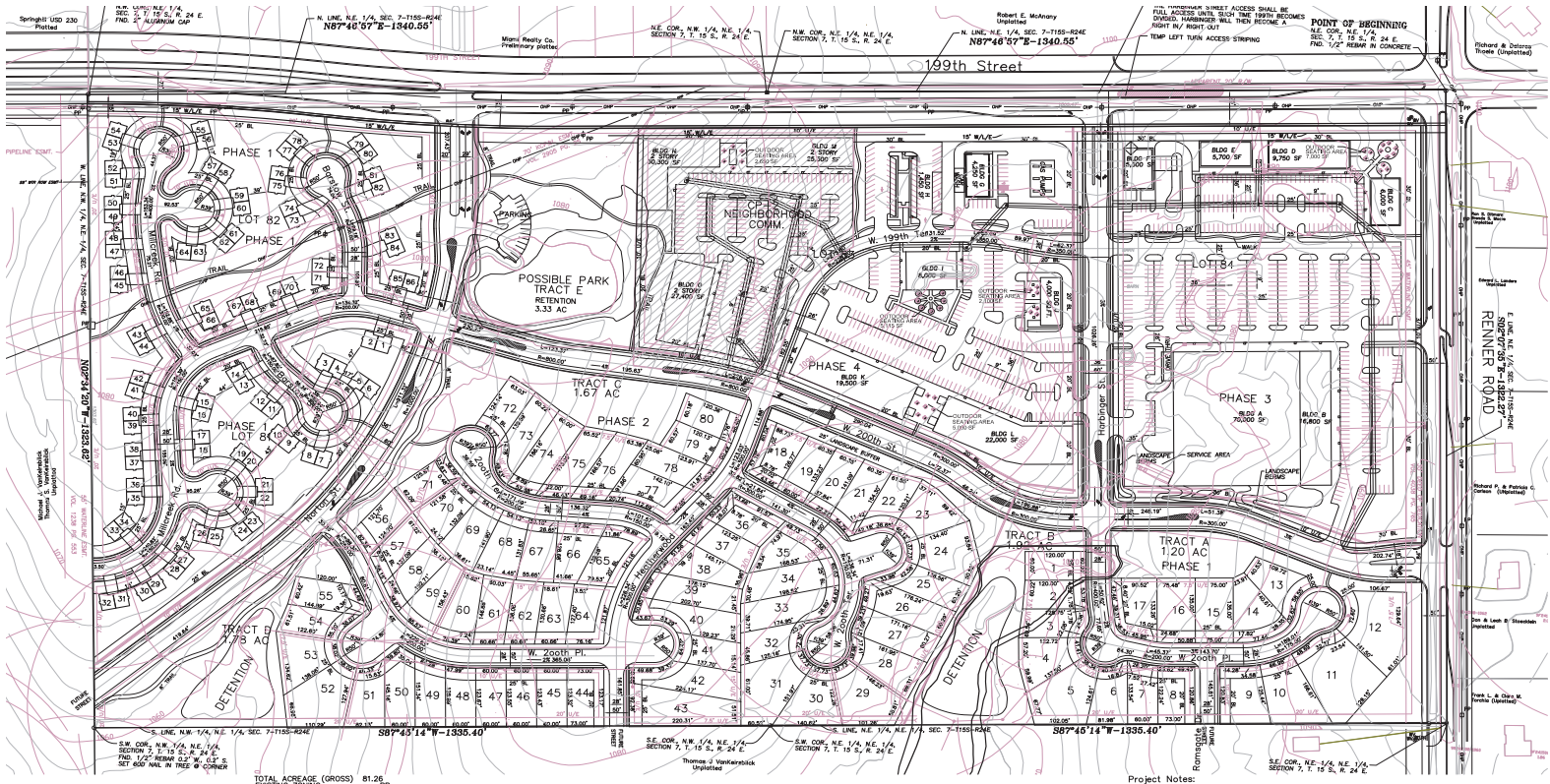
16915 W 199TH ST

SPRING HILL, KS 66083



REECE
COMMERCIAL REAL ESTATE

a Berkshire Hathaway Affiliate



HIGHLIGHTS

- Master Planned Community
- 15.24 Acres- RP-2 Multi Family - \$30k/Ac
- 31.81 Acres- RP-1 Single Family - \$30k/Ac
- 34.21 Acres- CP-1 Commercial - \$50k/Ac
- Seller Can Subdivide
- Close to Spring Hill High School, Middle School and New Elementary School (2021)
- Sanitary Sewers & Water Available
- Fastest Growing Corridor in Johnson County
- Owner/Agent

FOR SALE

81 Acres \$2,800,000

DEMOGRAPHICS

	1 Mile	3 Mile	5 Mile
2019 MED HOUSEHOLD INCOME	\$78,952	\$84,046	\$101,821

Jim Thome

Office: 913-548-8700

Mobile: 913-851-7300

Email: jimthome@reececommercial.com

The information above has been obtained from sources believed reliable. While we do not doubt its accuracy we have not verified it and make no guarantee, warranty or representation about it. It is your responsibility to independently confirm its accuracy and completeness. Any projections, opinions, assumptions, or estimates used are for example only and do not represent the current or future performance of the property. You and your advisors should conduct a careful, independent investigation of the property to determine to your satisfaction the suitability of the property for your needs.

AERIALS

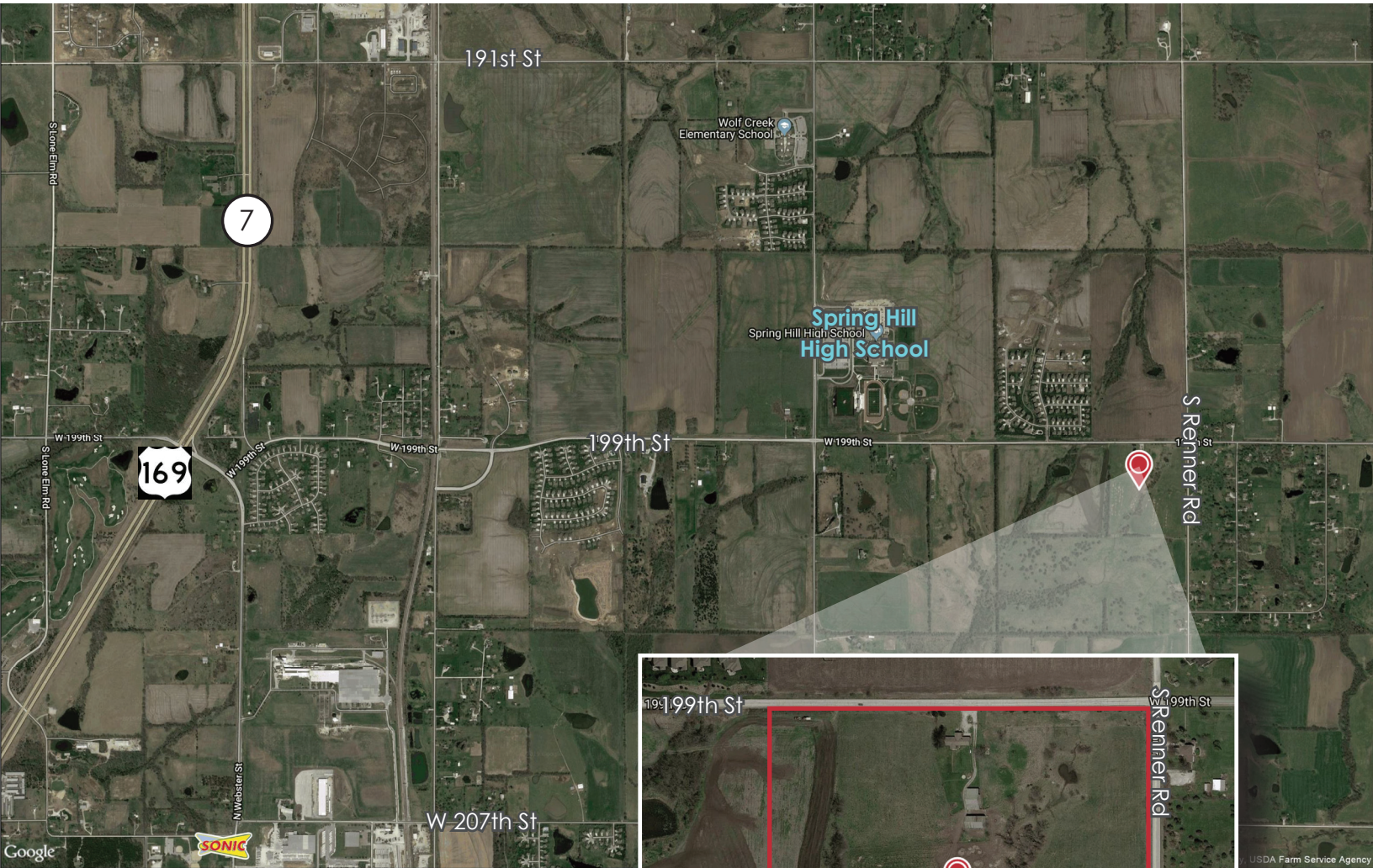
16915 W 199TH ST, SPRING HILL, KS 66083



REECE

COMMERCIAL REAL ESTATE

a Berkshire Hathaway Affiliate



Jim Thome

Office: 913-548-8700

Mobile: 913-851-7300

Email: jimthome@reececommercial.com

The information above has been obtained from sources believed reliable. While we do not doubt its accuracy we have not verified it and make no guarantee, warranty or representation about it. It is your responsibility to independently confirm its accuracy and completeness. Any projections, opinions, assumptions, or estimates used are for example only and do not represent the current or future performance of the property. You and your advisors should conduct a careful, independent investigation of the property to determine to your satisfaction the suitability of the property for your needs.

© 2020