

welltower

MEDICAL OFFICE SPACE
FOR LEASE

Click or Scan Below



For Information:

CHAD COSTELLO

561.452.1387

chadcostello@hraflorida.com



Bethesda Health City
10301 HAGEN RANCH ROAD | BOYNTON BEACH, FL

medicaloffice.welltower.com

EXECUTIVE SUMMARY

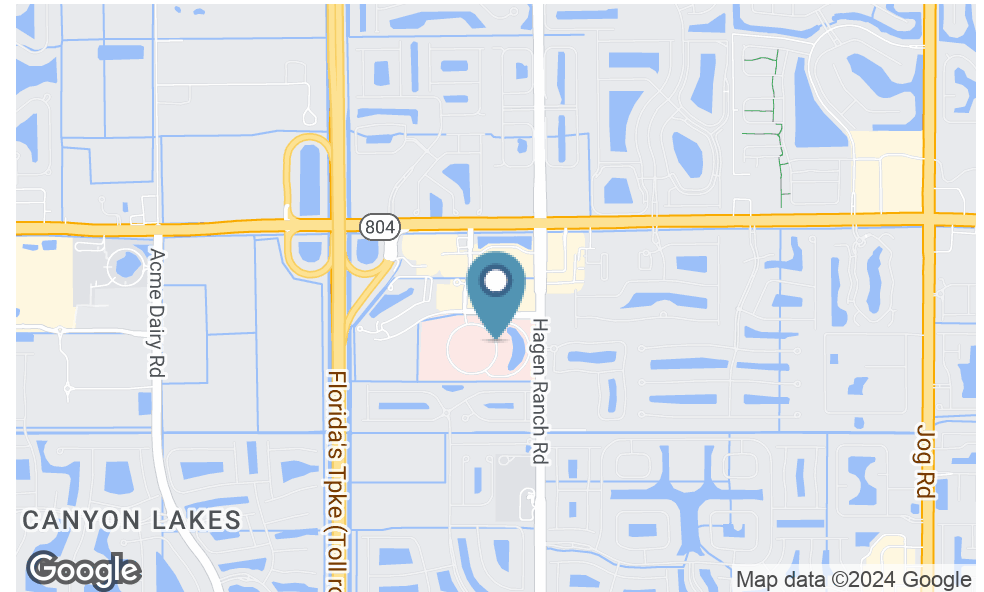


Location Description

Conveniently located off of Florida's Turnpike and minutes from Bethesda Hospital West.

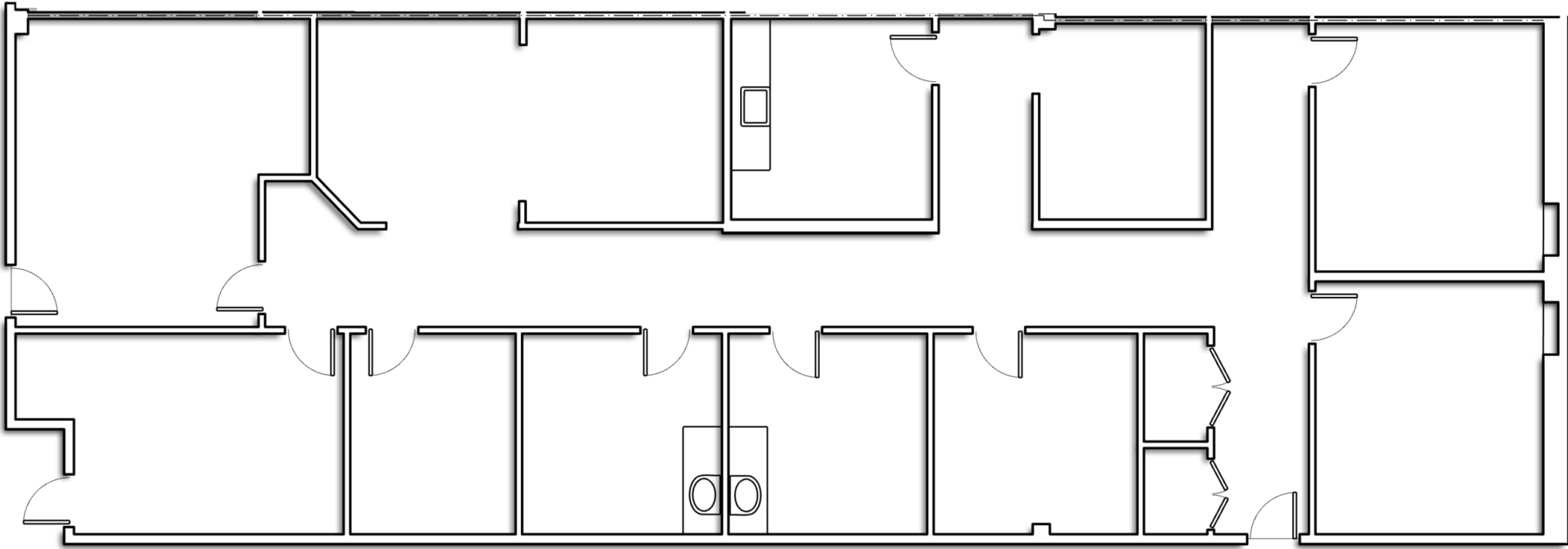
Property Highlights

- Premier medical campus anchored by Ambulatory Surgery Center
- Recently renovated
- 62.8% health system & affiliate occupancy
- Occupied by a wide variety of health specialties



FLOOR PLANS

welltower



B6

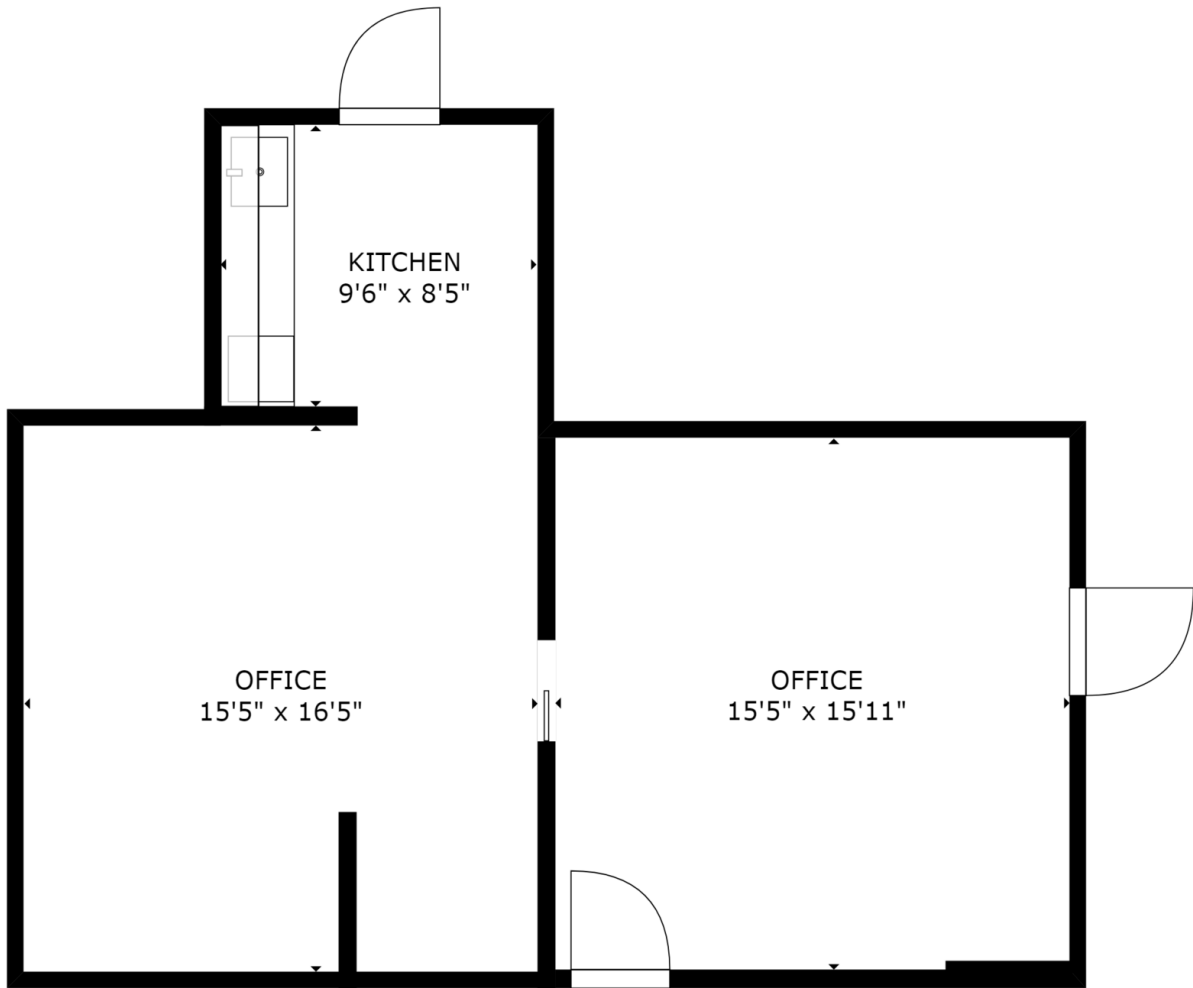
2,560 RSF

CHAD COSTELLO
561.452.1387
chadcostello@hraflorida.com

HRA HEALTHCARE
REALTY
ADVISORS



FLOOR PLANS



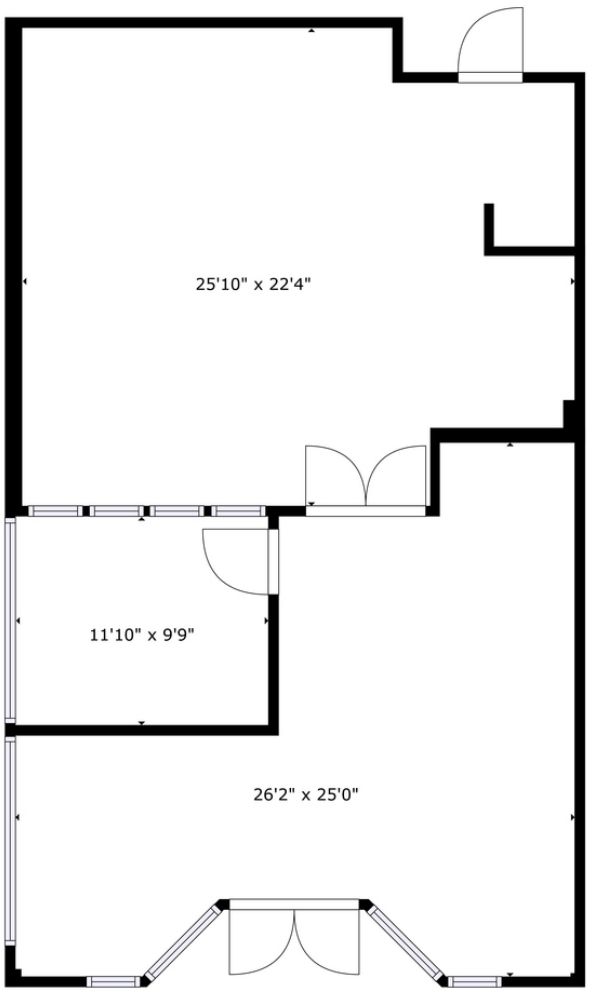
C100

739 RSF

CHAD COSTELLO
561.452.1387
chadcostello@hraflorida.com



FLOOR PLANS



SIZES AND DIMENSIONS ARE APPROXIMATE, ACTUAL MAY VARY.

C180

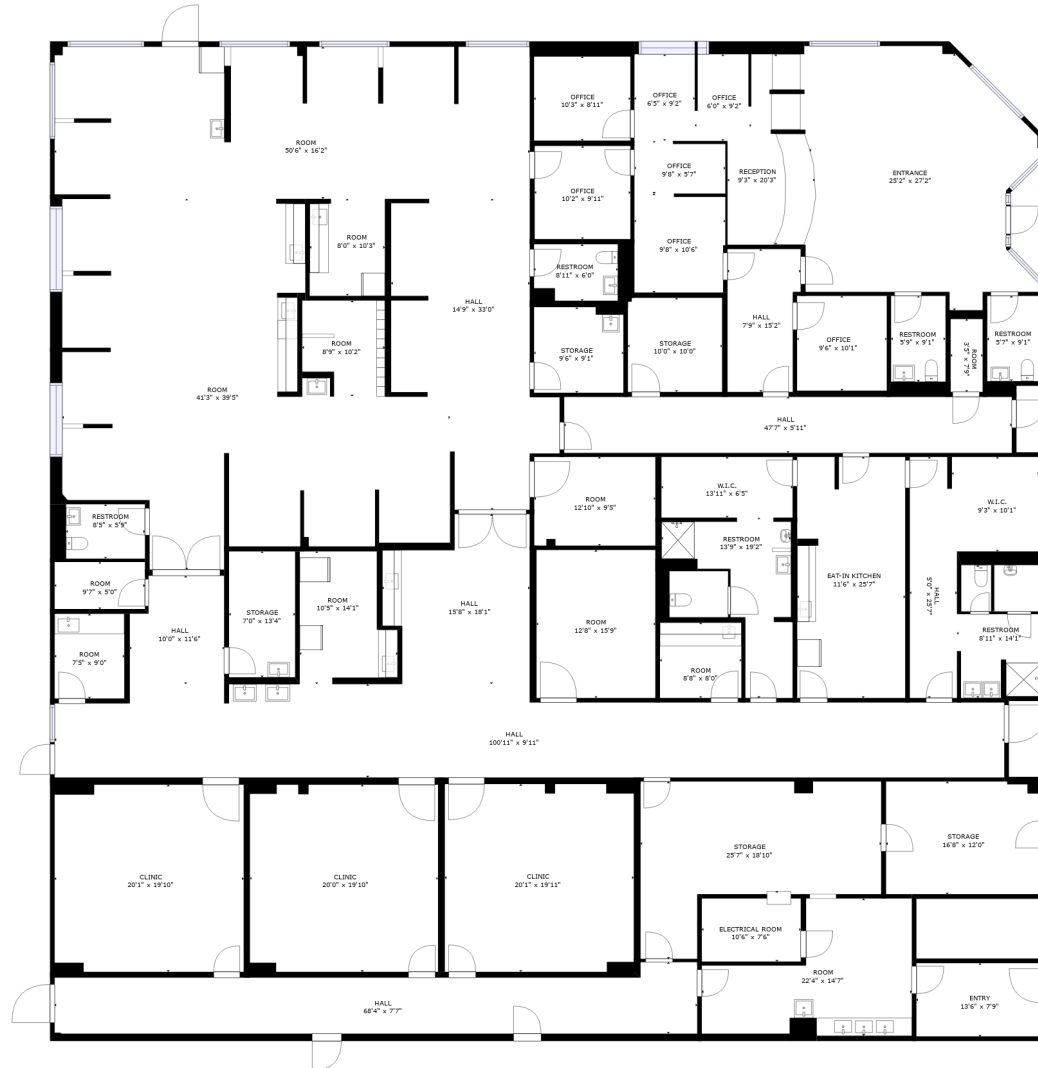
1,393 RSF

CHAD COSTELLO
561.452.1387
chadcostello@hraflorida.com



FLOOR PLANS

welltower



D520

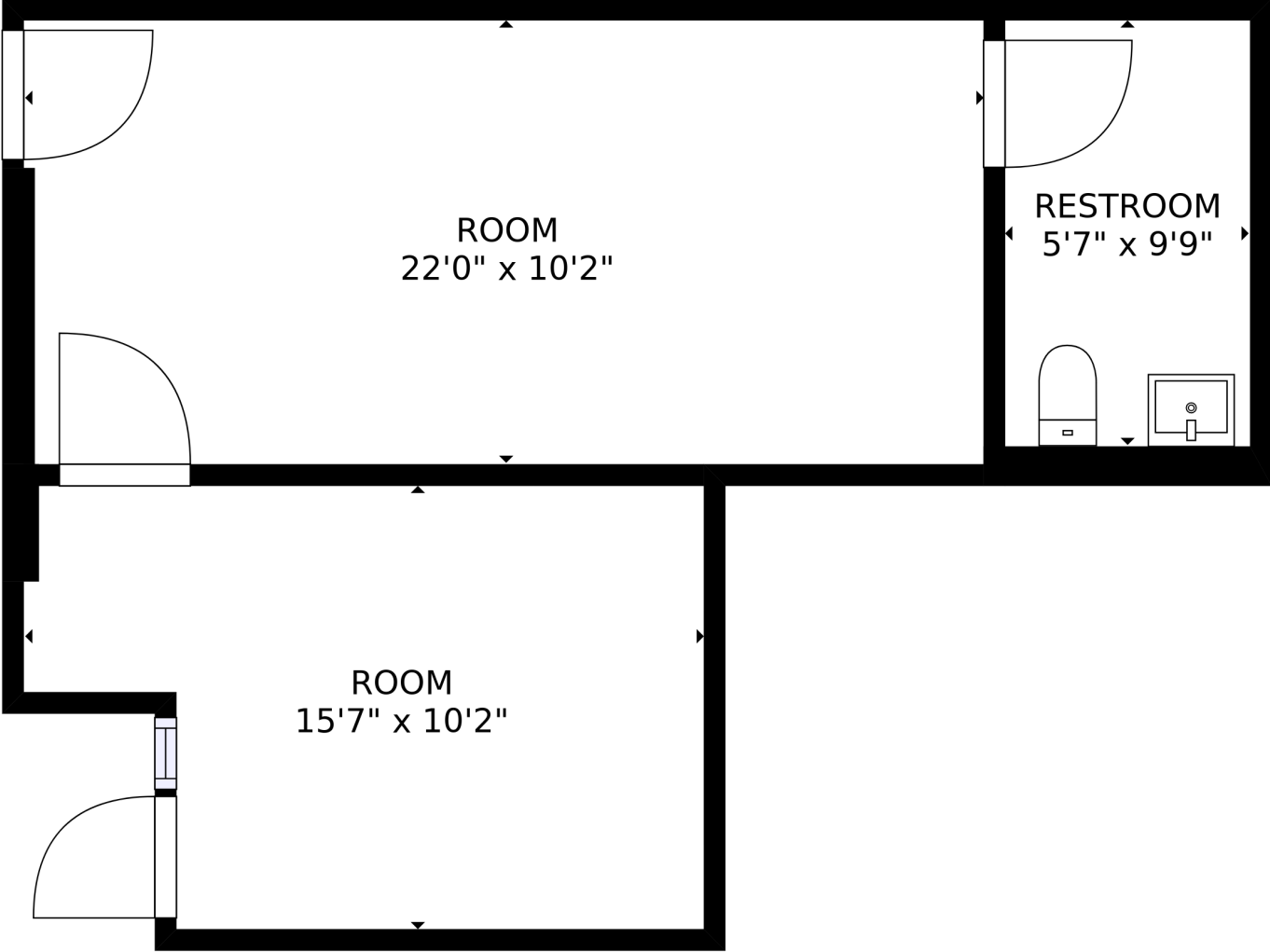
12,274 RSF

CHAD COSTELLO
561.452.1387
chadcostello@hraflorida.com

HRA HEALTHCARE
REALTY
ADVISORS

FLOOR PLANS

welltower



D710

582 RSF

CHAD COSTELLO
561.452.1387
chadcostello@hraflorida.com

HRA HEALTHCARE
REALTY
ADVISORS



DEMOGRAPHICS MAP & REPORT



Population

	1 Mile	3 Miles	5 Miles
Total Population	7,100	62,902	173,685
Average Age	58.6	57.5	53.3
Average Age (Male)	58.0	57.2	52.8
Average Age (Female)	58.3	57.7	53.7

Households & Income

	1 Mile	3 Miles	5 Miles
Total Households	3,384	29,007	76,406
# of Persons per HH	2.1	2.2	2.3
Average HH Income	\$77,567	\$76,862	\$76,755
Average House Value	\$313,108	\$330,704	\$319,358

* Demographic data derived from 2020 ACS - US Census

