

19641 SEVEN MILE ROAD  
DETROIT, MICHIGAN

OFFICE FOR SALE  
2,284 Square Feet Available



**SIGNATURE  
ASSOCIATES**  
KNOW SIGNATURE | KNOW RESULTS

**WELL-MAINTAINED BUILDING**



## PROPERTY FEATURES

- 2,284 square feet available
- Single-story brick building
- Ample parking in rear
- Zoned B-4
- Well-maintained with many updates
- Sale Price \$135,000 (\$59.11/sq.ft.)



For more information, please contact:

**JOE STACK**  
(248) 359 0615  
jstack@signatureassociates.com

**CHRIS MONSOUR**  
(248) 948 0107  
cmonsour@signatureassociates.com

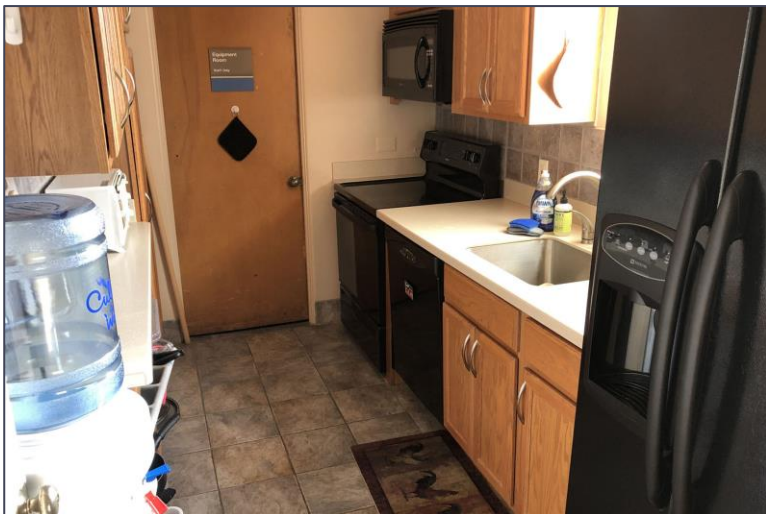
**SIGNATURE ASSOCIATES**  
One Towne Square, Suite 1200  
Southfield, MI 48076  
www.signatureassociates.com

# 19641 Seven Mile Road – Detroit, Michigan

## Office For Sale

2,284  
Square Feet  
AVAILABLE

### Additional Photos



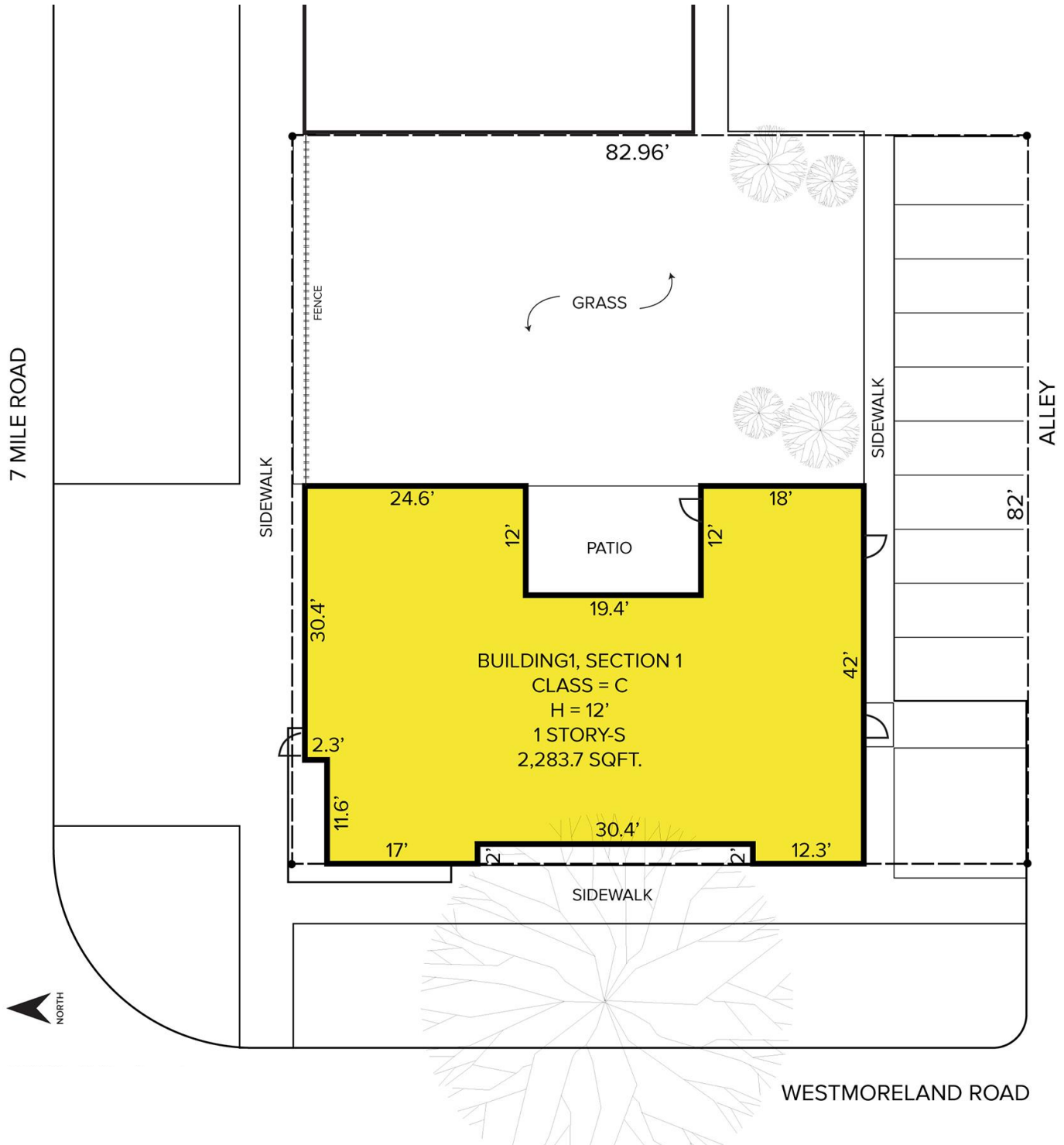
For more information, please contact:

**JOE STACK**  
(248) 359 0615  
jstack@signatureassociates.com

**CHRIS MONSOUR**  
(248) 948 0107  
cmonsour@signatureassociates.com

**SIGNATURE ASSOCIATES**  
One Towne Square, Suite 1200  
Southfield, MI 48076  
www.signatureassociates.com

### Site Plan



For more information, please contact:

**JOE STACK**  
(248) 359 0615  
jstack@signatureassociates.com

**CHRIS MONSOUR**  
(248) 948 0107  
cmonsour@signatureassociates.com

**SIGNATURE ASSOCIATES**  
One Towne Square, Suite 1200  
Southfield, MI 48076  
www.signatureassociates.com

# 19641 Seven Mile Road – Detroit, Michigan

Office For Sale

2,284  
Square Feet  
AVAILABLE

Aerial



For more information, please contact:

**JOE STACK**  
(248) 359 0615  
jstack@signatureassociates.com

**CHRIS MONSOUR**  
(248) 948 0107  
cmonsour@signatureassociates.com

**SIGNATURE ASSOCIATES**  
One Towne Square, Suite 1200  
Southfield, MI 48076  
www.signatureassociates.com