



HICKORY OFFICE BUILDING

1098 N HICKORY AVE, MERIDIAN, ID 83642

OFFICE

FOR LEASE

LAST AVAILABLE SPACE

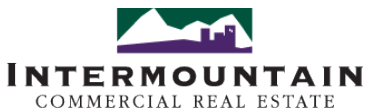


CALL NOW
Ready to Deal!

PROPERTY INFORMATION:

Available SF: **2,899 SF**
 Lease Rate: **CONTACT AGENT**
 Lease Type: **FLSVEJ**
 Lot Size: **0.68 Acres**
 Building Size: **7,384 SF**
 Building Class: **A**
 Year Built: **2007**
 Zoning: **I-L**
 Market: **Meridian**
 Cross Streets: **Pine and Hickory**

SPACE	SIZE (SF)	LEASE RATE
Office Suite	2,899 SF	CONTACT AGENT



380 E. Parkcenter Boulevard
 Suite 290
 Boise, ID 83706
www.icrellc.com
 (208) 429.8603 / office / (208) 429-8604 fax

LISTING AGENTS:

Guy Levingston, SIOR
 guy@icrellc.com
 o / 208.286.2262
 c / 208.830.4420

Jim Hosac
 jim@icrellc.com
 o / 208.922.6681
 c / 208.850.8470



HICKORY OFFICE BUILDING

1098 N HICKORY AVE, MERIDIAN, ID 83642

EXECUTIVE SUMMARY



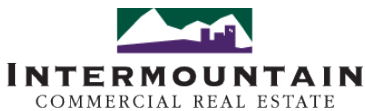
OFFERING SUMMARY

Available SF:	2,899 SF
Lease Rate:	CONTACT AGENT
Lot Size:	0.68 Acres
Building Size:	7,384 SF
Building Class:	A
Year Built:	2007
Zoning:	I-L
Market:	Meridian
Cross Streets:	Pine and Hickory

PROPERTY HIGHLIGHTS

- Shell office space ready for build out
- Ground floor with direct access from parking lot
- Class A office finishes to be built for new tenant
- Ample onsite parking
- Surrounded by retail, restaurants and services

OFFICE



380 E. Parkcenter Boulevard
 Suite 290
 Boise, ID 83706
www.icrellc.com
 (208) 429.8603 / office / (208) 429-8604 fax

Guy Livingston, SIOR

guy@icrellc.com
 o / 208.286.2262
 c / 208.830.4420

LISTING AGENTS:

Jim Hosac

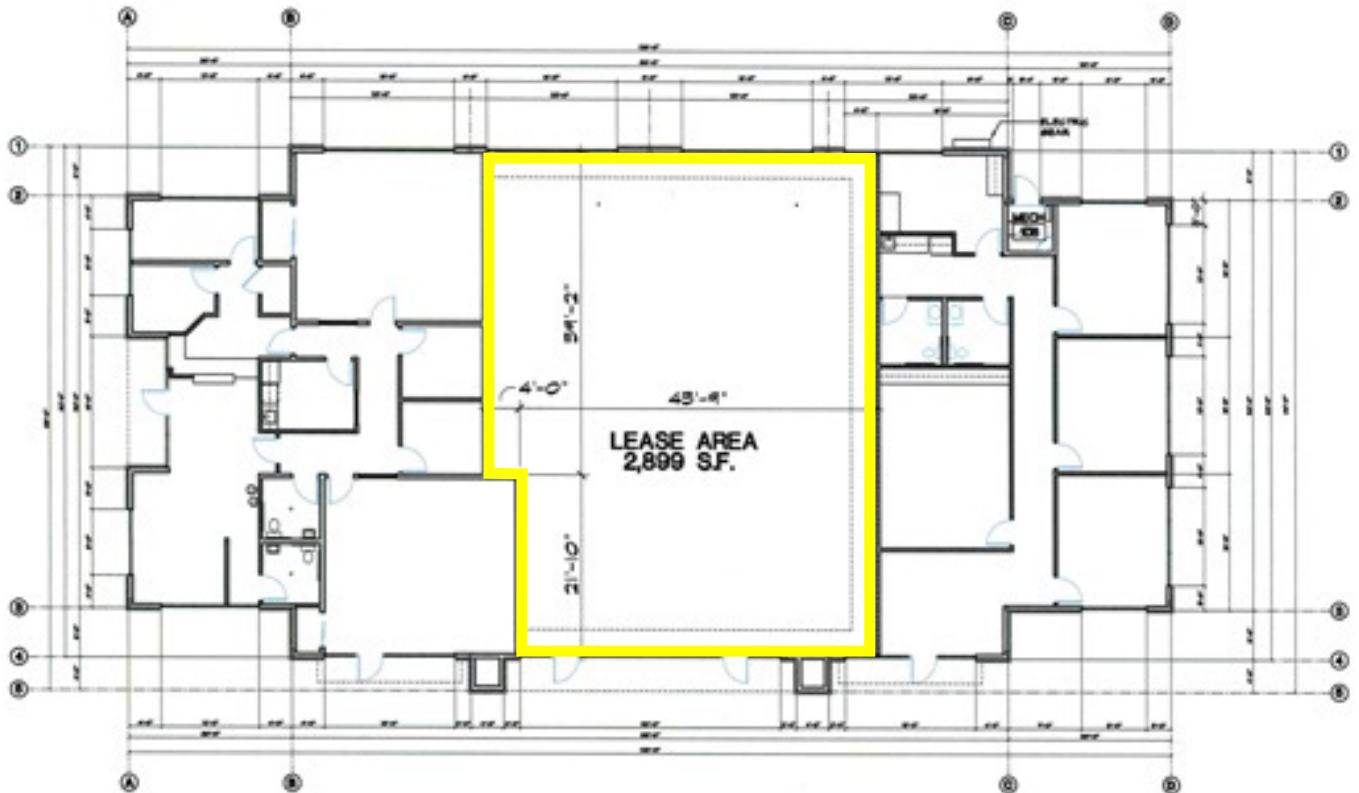
jim@icrellc.com
 o / 208.922.6681
 c / 208.850.8470



HICKORY OFFICE BUILDING

1098 N HICKORY AVE, MERIDIAN, ID 83642

FLOORPLAN



FLOOR PLAN

SCALE: 1/16" = 1'-0"



HICKORY BUILDING
MERIDIAN, IDAHO

OFFICE



INTERMOUNTAIN
COMMERCIAL REAL ESTATE

380 E. Parkcenter Boulevard
Suite 290
Boise, ID 83706
www.icrellc.com
(208) 429.8603 / office / (208) 429-8604 fax

LISTING AGENTS:

Guy Livingston, SIOR

guy@icrellc.com
o / 208.286.2262
c / 208.830.4420

Jim Hosac

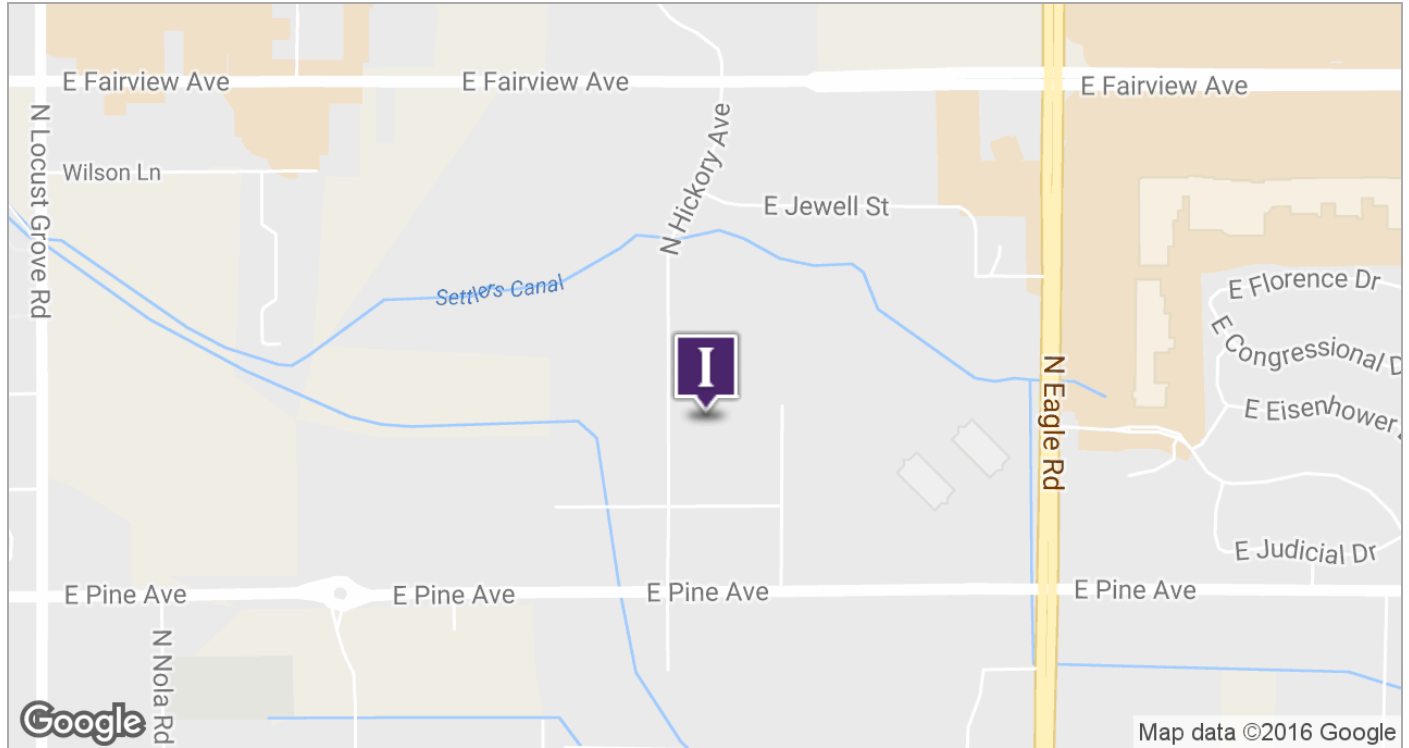
jim@icrellc.com
o / 208.922.6681
c / 208.850.8470



HICKORY OFFICE BUILDING

1098 N HICKORY AVE, MERIDIAN, ID 83642

LOCATION MAPS



OFFICE



INTERMOUNTAIN
COMMERCIAL REAL ESTATE

380 E. Parkcenter Boulevard
Suite 290
Boise, ID 83706
www.icrellc.com
(208) 429.8603 / office / (208) 429-8604 fax

Guy Livingston, SIOR

guy@icrellc.com
o / 208.286.2262
c / 208.830.4420

LISTING AGENTS:

Jim Hosac

jim@icrellc.com
o / 208.922.6681
c / 208.850.8470