

FOR SALE

1400 W 13th Street

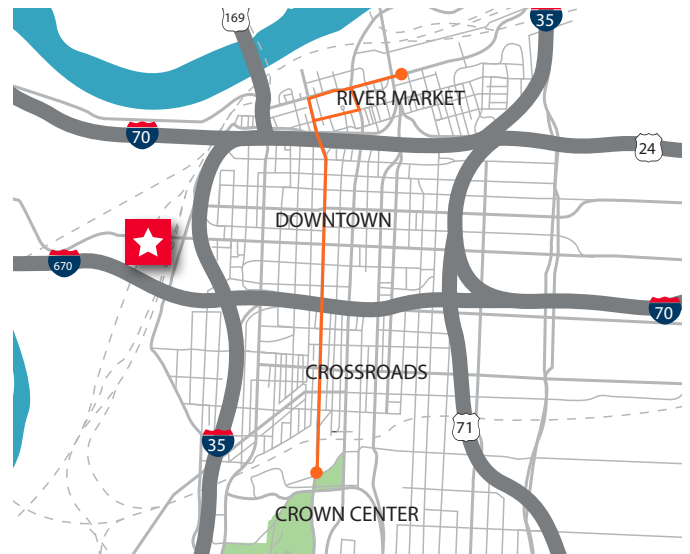
Kansas City, MO

21,300 SF



PROPERTY HIGHLIGHTS

- Historic West Bottoms building for sale
- Approximately 21,300 SF on three floors
- Outstanding location near 12th Street Bridge in Antique District
- Excellent structure with many recent improvements
- Great owner-occupant opportunity
- Sale Price \$1,100,000



GIB KERR, CCIM

Director
+1 816 412 0212
gib.kerr@cushwake.com

JEFFREY BENTZ

Senior Associate
+1 816 412 0281
jeffrey.bentz@cushwake.com



**CUSHMAN &
WAKEFIELD**

cushmanwakefield.com

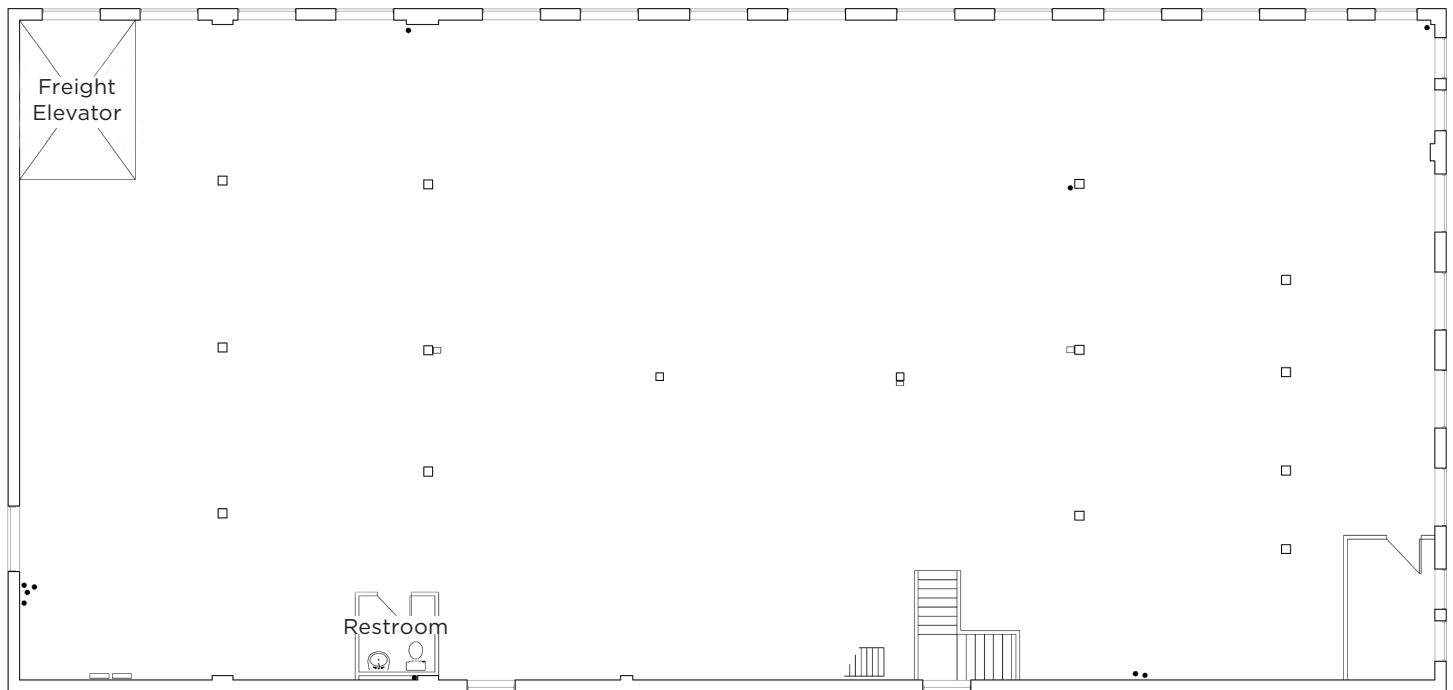
1400 W 13th Street

Kansas City, MO

21,300 SF

FOR SALE

FLOOR PLAN



GIB KERR, CCIM

Director

+1 816 412 0212

gib.kerr@cushwake.com

JEFFREY BENTZ

Senior Associate

+1 816 412 0281

jeffrey.bentz@cushwake.com



**CUSHMAN &
WAKEFIELD**

cushmanwakefield.com

1400 W 13th Street

Kansas City, MO

21,300 SF

FOR SALE



**CUSHMAN &
WAKEFIELD**

cushmanwakefield.com

©2020 Cushman & Wakefield. All rights reserved. The information contained in this communication is strictly confidential. This information has been obtained from sources believed to be reliable but has not been verified. No warranty or representation, express or implied, is made as to the condition of the property (or properties) referenced herein or as to the accuracy or completeness of the information contained herein, and same is submitted subject to errors, omissions, change of price, rental or other conditions, withdrawal without notice, and to any special listing conditions imposed by the property owner(s). Any projections, opinions or estimates are subject to uncertainty and do not signify current or future property performance.

1400 W 13th Street

Kansas City, MO

21,300 SF

FOR SALE

AERIAL



GIB KERR, CCIM

Director

+1 816 412 0212

gib.kerr@cushwake.com

JEFFREY BENTZ

Senior Associate

+1 816 412 0281

jeffrey.bentz@cushwake.com



**CUSHMAN &
WAKEFIELD**

cushmanwakefield.com

1400 W 13th Street

Kansas City, MO

21,300 SF

FOR SALE

BIRDS EYE VIEW



GIB KERR, CCIM

Director

+1 816 412 0212

gib.kerr@cushwake.com

JEFFREY BENTZ

Senior Associate

+1 816 412 0281

jeffrey.bentz@cushwake.com



**CUSHMAN &
WAKEFIELD**

cushmanwakefield.com