

FOR LEASE

Office for Lease

2339 STANWELL CIRCLE, CONCORD, CA

1,500 ± Sq. Ft.



2339 STANWELL CIRCLE, CONCORD, CA

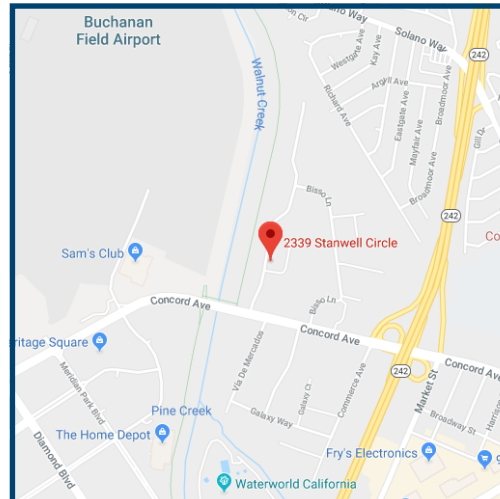
PROPERTY INFORMATION

Location 2339 Stanwell Circle, Concord, CA

Square Feet 1,500 ± Sq. Ft.

Lease Rate \$1.35/IG

Highlights
Office for lease
4 private offices
1 workroom
Large open work area
En Suite Restroom
Easy access to I-680 & Highway 242



KENNEDY WILSON

Contact Exclusive Agent
Eric Rehn, CCIM
925.784.3449 Cell
erehn@kennedywilson.com
CalBRE #01365267

1850 Gateway Blvd., Suite 130, Concord, CA 94520
www.KennedyWilson.com

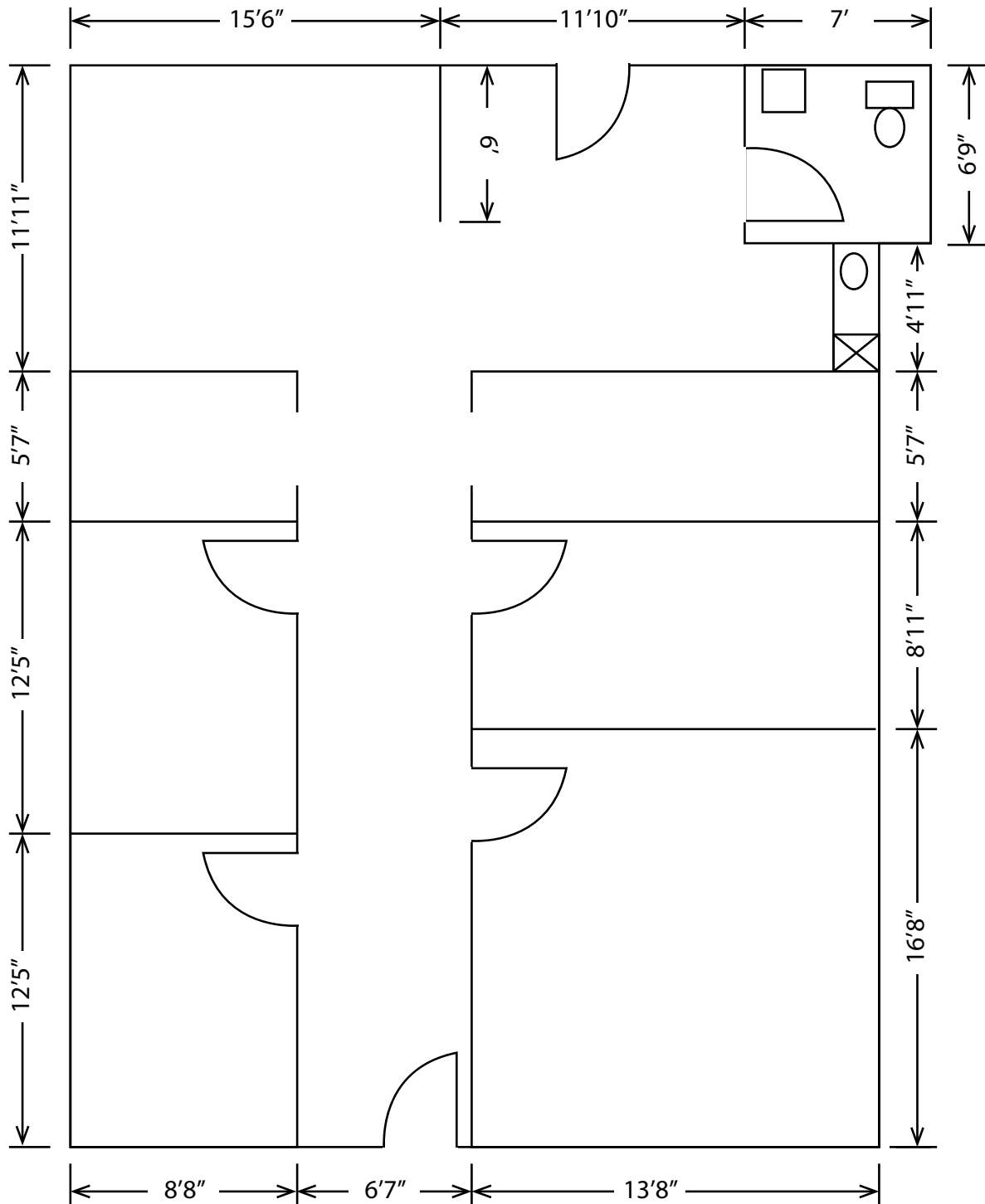
Exclusive Agency: Kennedy Wilson is the exclusive agent of the seller of the Property. Designated Agent: Eric Rehn, CCIM is Kennedy Wilson's designated agent for the Property who solely represent the interests of the owner of the Property. Kennedy Wilson Properties, Ltd. (Responsible Broker, CalBRE #00746768) makes no warranty or representation as to the accuracy of the information contained herein. Terms of sale or lease and availability of the property are subject to change or withdrawal without notice. Prospective tenants are hereby advised that all uses are subject to City approval.

FOR LEASE

Office for Lease

2339 STANWELL CIRCLE, CONCORD, CA

1,500 ± Sq. Ft.



2339 STANWELL CIRCLE, CONCORD, CA

Contact Exclusive Agent

Eric Rehn, CCIM

925.784.3449 Cell

erehn@kennedywilson.com

CalBRE #01365267

KENNEDY WILSON

1850 Gateway Blvd., Suite 130, Concord, CA 94520

www.KennedyWilson.com