

# 626 Route 206

Hillsborough, NJ 08844



## PROPERTY INFO

4,019 Square Feet available for lease

Asking Rent: \$14.50 NNN (CAM, Insurance, Taxes total \$4.65)

Join Bottle King, Adam & Even Hair Salon, 206 Farmers Market

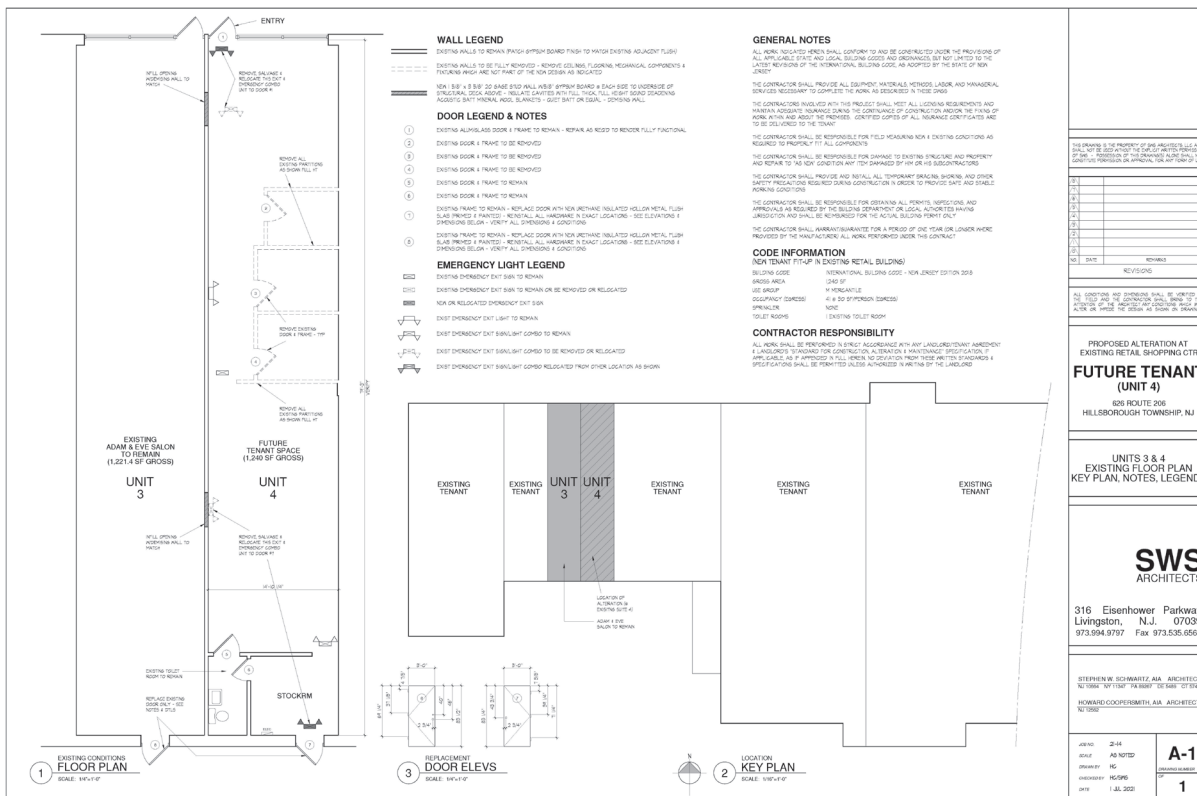
Seeking: auto parts, financial institutions, fitness studios, restaurants, and other retail users.



# 626 Route 206

Hillsborough, NJ 08844

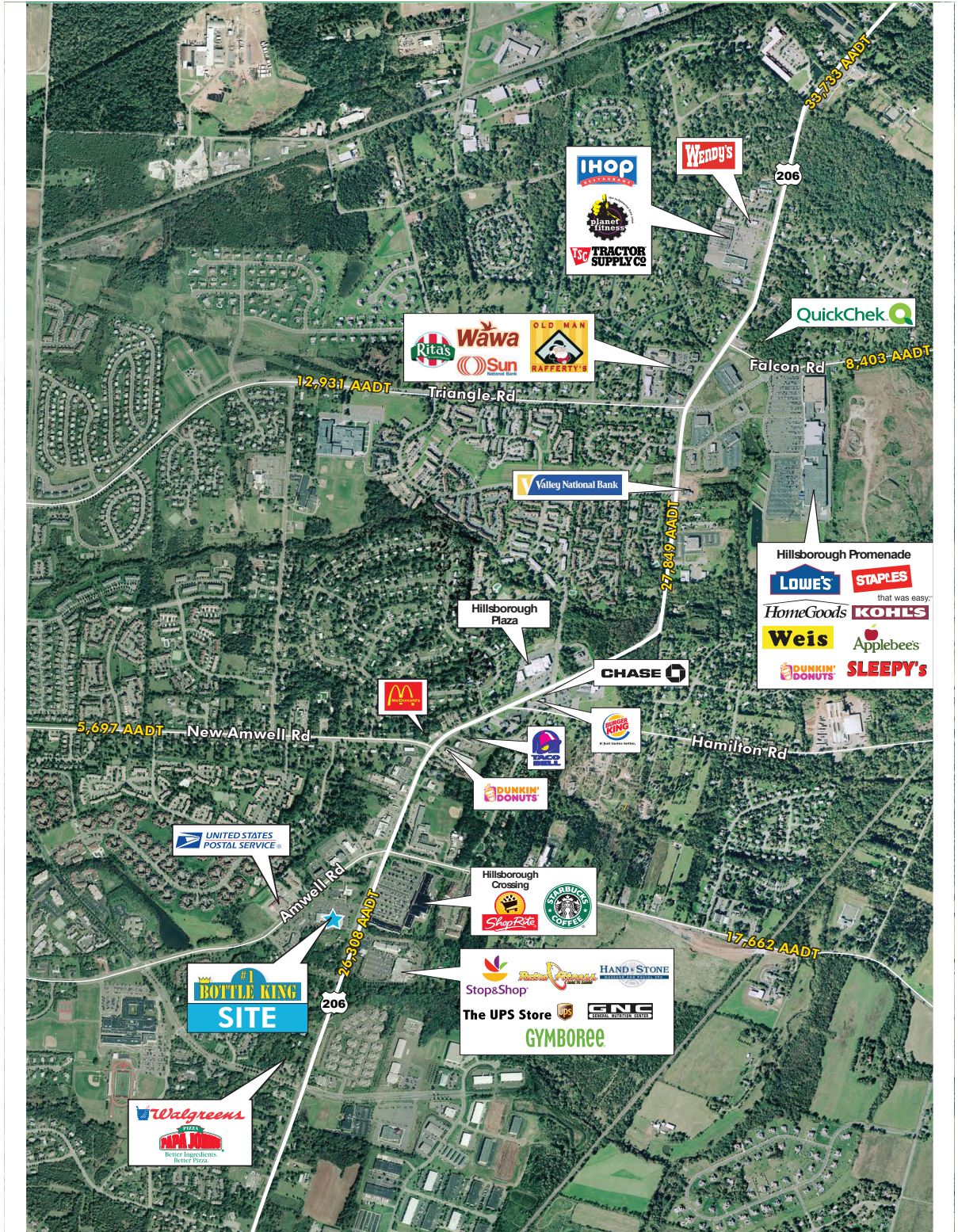
## PLAN



# 626 Route 206

Hillsborough, NJ 08844

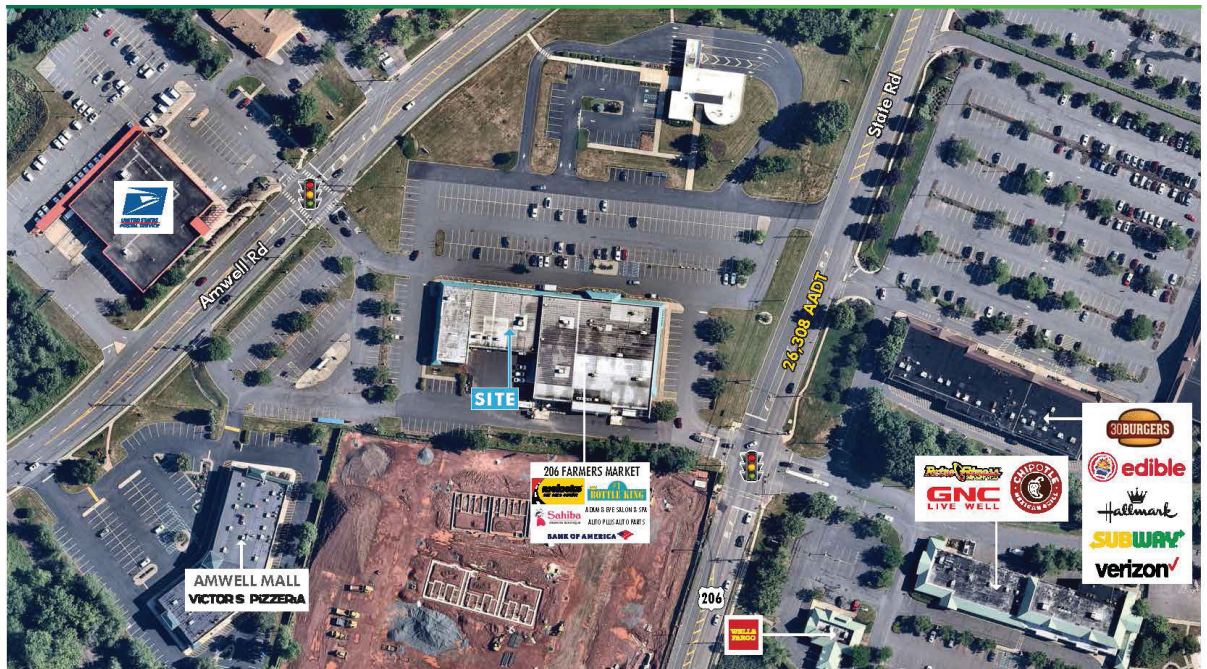
## MARKET AERIAL



# 626 Route 206

Hillsborough, NJ 08844

## CLOSE IN AERIAL



## DEMOGRAPHICS

|                                | 1 MILE           | 3 MILES          | 5 MILES          |
|--------------------------------|------------------|------------------|------------------|
| <b>POPULATION</b>              | <b>9,407</b>     | <b>36,482</b>    | <b>79,576</b>    |
| <b>DAYTIME POPULATION</b>      | <b>9,536</b>     | <b>35,107</b>    | <b>73,171</b>    |
| <b>MEDIAN HOUSEHOLD INCOME</b> | <b>\$104,802</b> | <b>\$129,780</b> | <b>\$121,577</b> |

### PLEASE CONTACT:

**Patti AmecAngelo**

First Vice President

+1 732 687 9725

patti.amecangelo@cbre.com

© 2021 CBRE, Inc. All rights reserved. This information has been obtained from sources believed reliable, but has not been verified for accuracy or completeness. You should conduct a careful, independent investigation of the property and verify all information. Any reliance on this information is solely at your own risk. CBRE and the CBRE logo are service marks of CBRE, Inc. All other marks displayed on this document are the property of their respective owners, and the use of such logos does not imply any affiliation with or endorsement of CBRE. Photos herein are the property of their respective owners. Use of these images without the express written consent of the owner is prohibited.