

For Sale or Lease

Farmers Insurance Office Center

331 Andover Park East
Tukwila, WA

Sales Price
\$1,588,400

Lease Rate
\$22.00 PSF, Full Service



Contact

Brian Clapp
206.248.7316
bclapp@kiddermathews.com

Features

Quality 7,220 SF in a 3 story office building

Great visibility with immediate I-5 / I-405 and SR-518 (SeaTac airport) access

Top quality office build-out

Corner lot (22,068 SF) at lighted intersection of Strander and Andover Park East

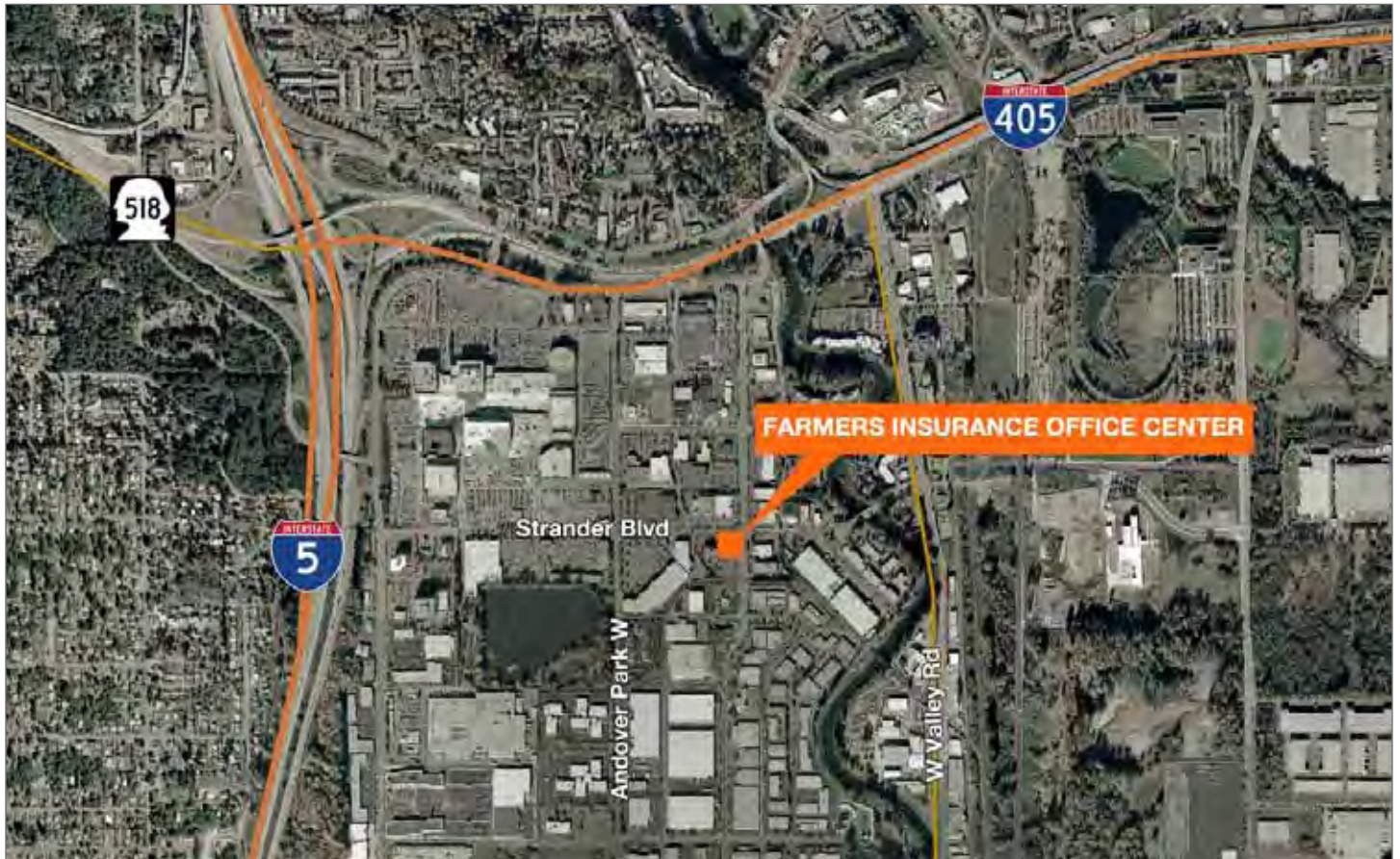
Building signage available

32 surface parking stalls (4.43/1,000)

Zoning is TUC (Tukwila Urban Center)

Minutes walk to Westfield Southcenter Mall and other amenities

Farmers Insurance Office Center

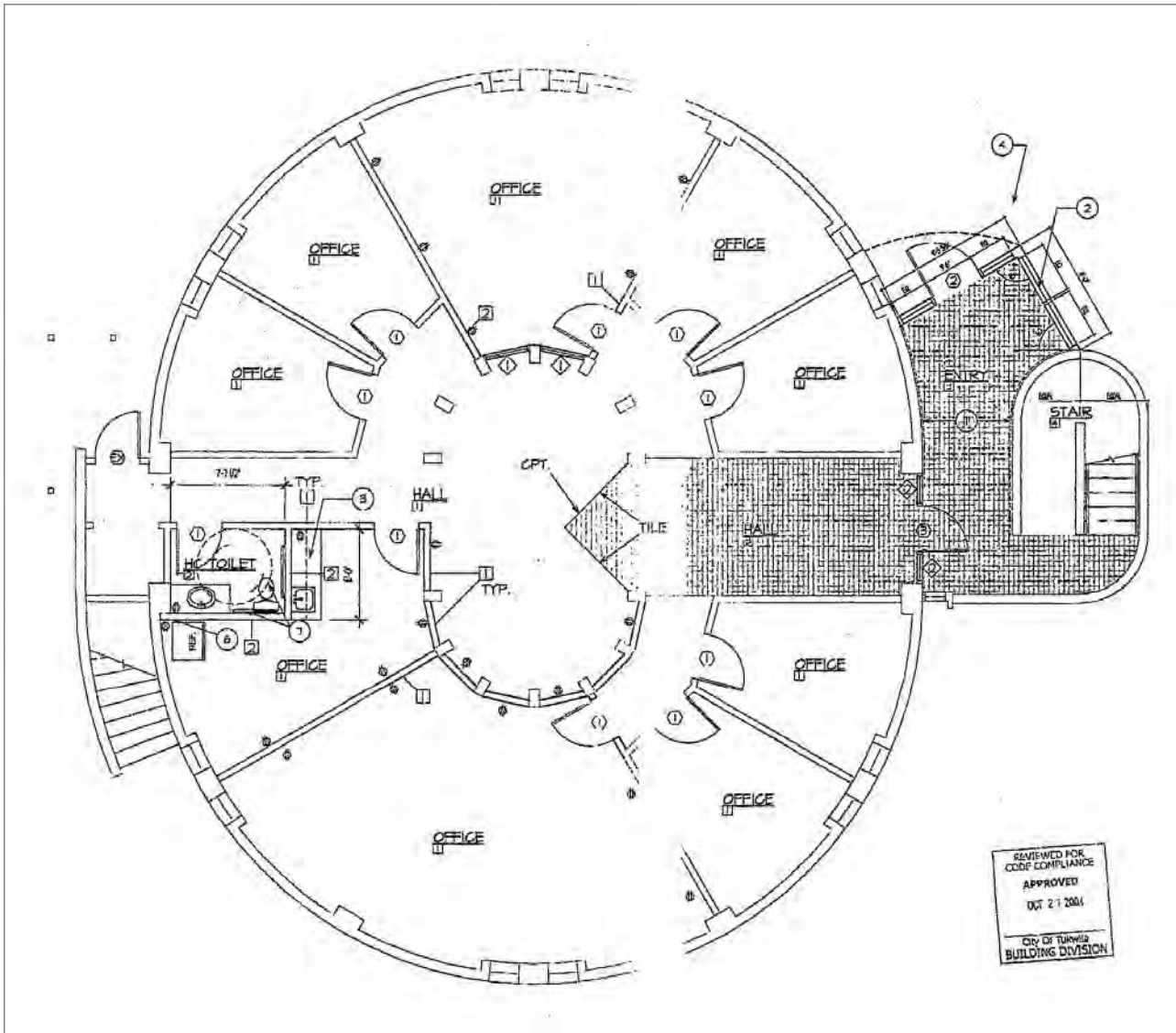


Contact

Brian Clapp
206.248.7316
bclapp@kiddermathews.com

Farmers Insurance Office Center

First Floor

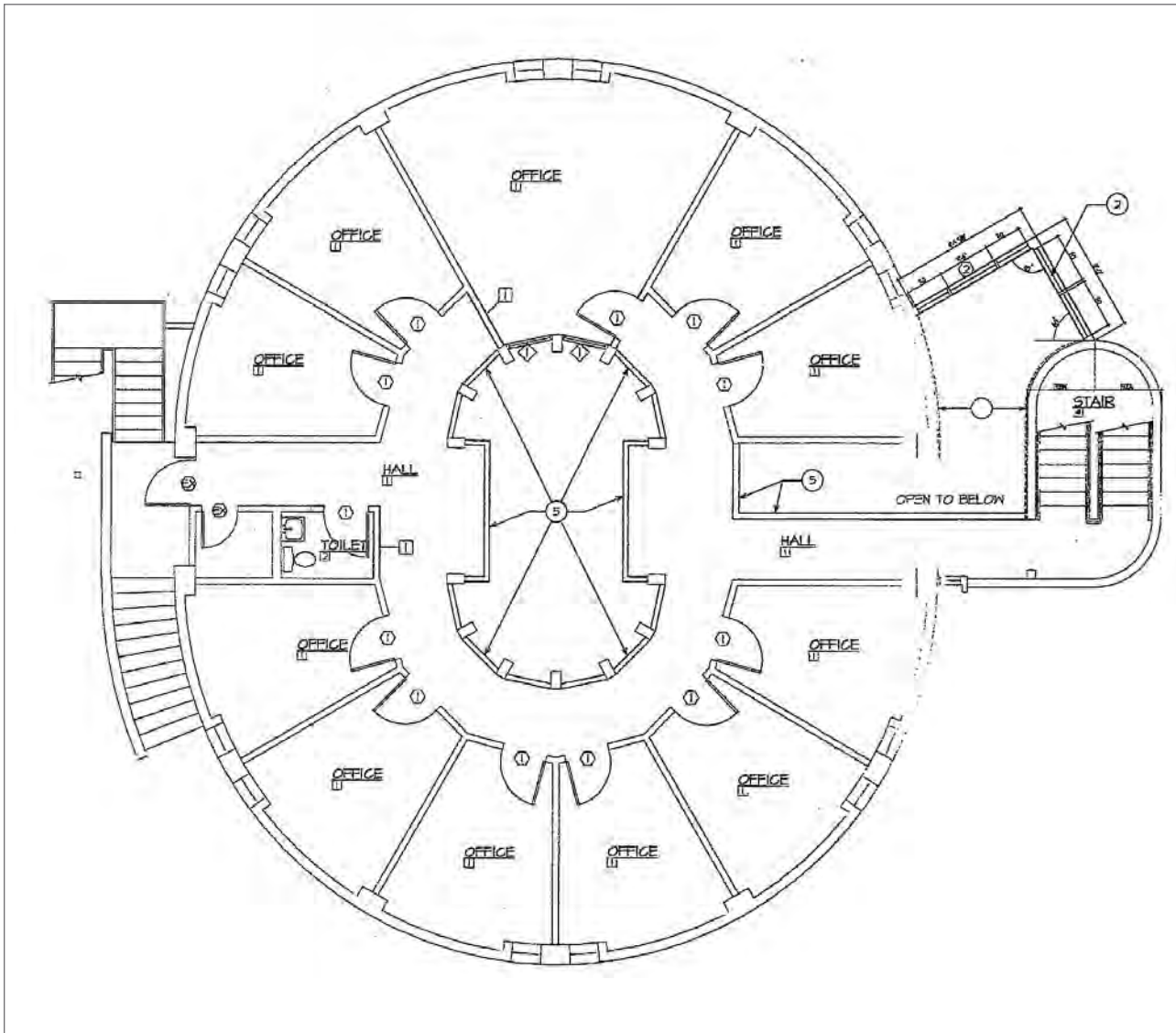


Contact

Brian Clapp
206.248.7316
bclapp@kiddermathews.com

Farmers Insurance Office Center

Second Floor

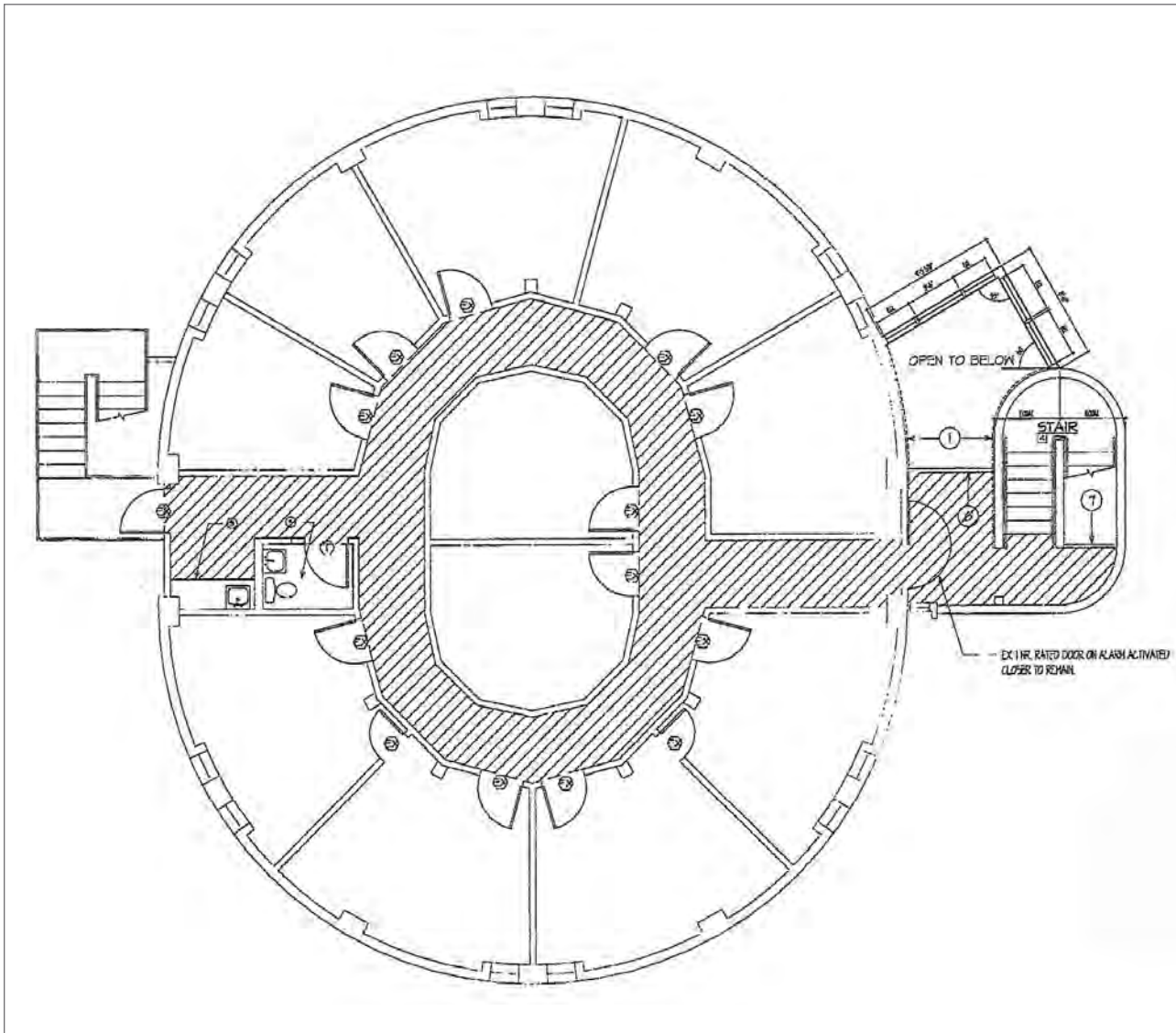


Contact

Brian Clapp
206.248.7316
bclapp@kiddermathews.com

Farmers Insurance Office Center

Third Floor



Contact

Brian Clapp
206.248.7316
bclapp@kiddermathews.com