

RETAIL PAD - E/SEC MILLER RD. & SOUTHERN AVE. BUCKEYE, ARIZONA



PRICE: \$12.00 per square foot

PROPERTY SIZE: 2 +/- acres

ASSESSOR'S PARCEL NUMBERS: 504-47-007

ZONING: CC

UTILITIES:

Phone—CenturyLink, Cox

Power—APS

Water/Sewer—City of Buckeye

COMMENTS: Well positioned ready to go 2 acre pad. The site is located at a major intersection and adjacent to Walgreens. There is great visibility and easy access. Seller is willing to sell a portion of the site. The surrounding area is growing rapidly with over 150 new homes selling in Buckeye each month. Please call or email with any questions.

Trade Area Polygon Demographics	Trade Area
Estimated Population	75,000
Ave Household Income	\$58,553
Estimated Households	20,058
Projected 2020 Population	218,591



SCOTT TRUITT - DESIGNATED BROKER
2711 EAST INDIAN SCHOOL ROAD SUITE 205
PHOENIX, ARIZONA 85016

OFFICE: 623-977-4900
MOBILE: 602-622-9099
FAX: 888-901-4243

TRUITT@WESTERNLANDCO.NET

RETAIL PAD - E/SEC MILLER RD. & SOUTHERN AVE. BUCKEYE, ARIZONA



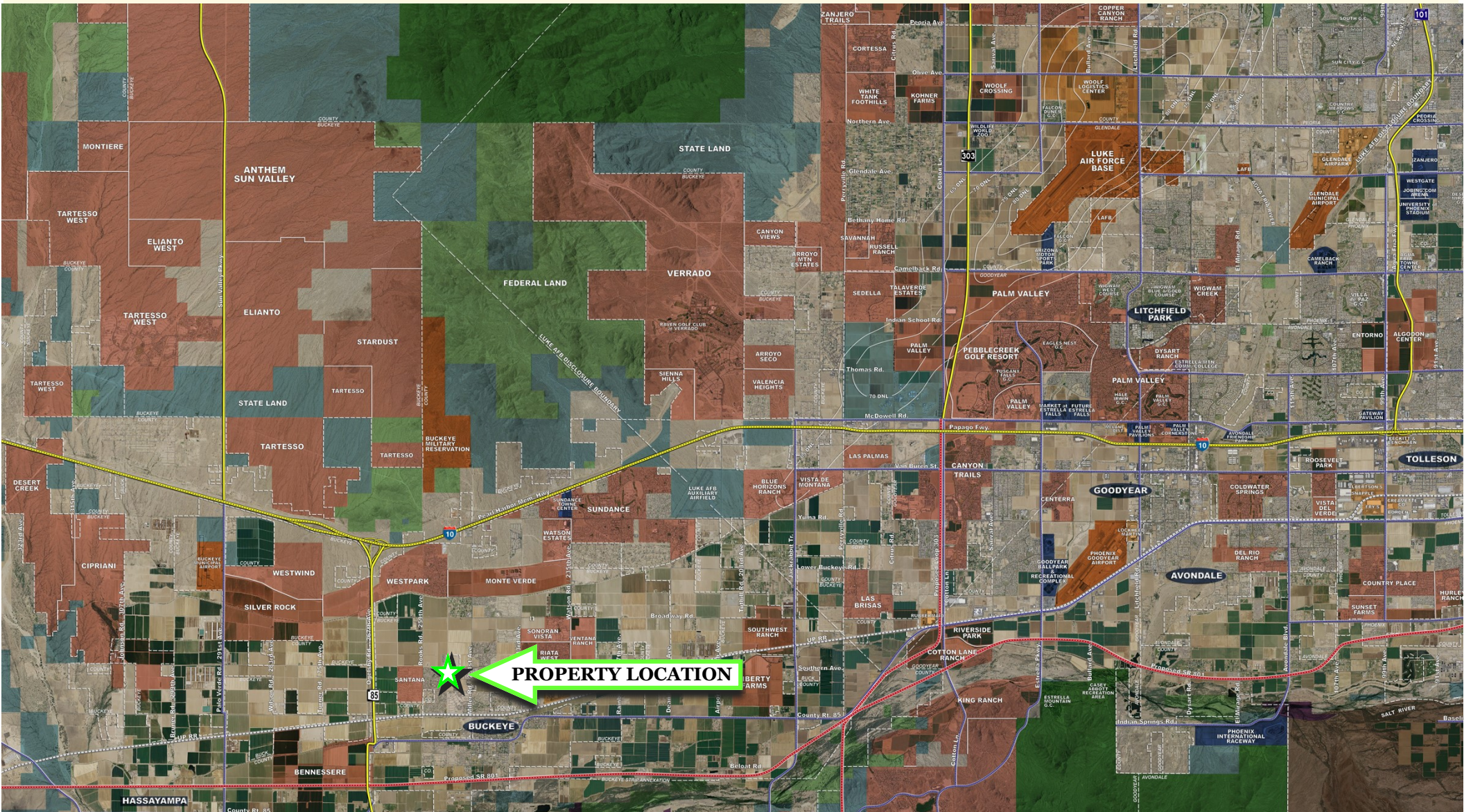
SCOTT TRUITT - DESIGNATED BROKER
2711 EAST INDIAN SCHOOL ROAD SUITE 205
PHOENIX, ARIZONA 85016

OFFICE: 623-977-4900
MOBILE: 602-622-9099
FAX: 888-901-4243

TRUITT@WESTERNLANDCO.NET

RETAIL PAD - E/SEC MILLER RD. & SOUTHERN AVE.

BUCKEYE, ARIZONA



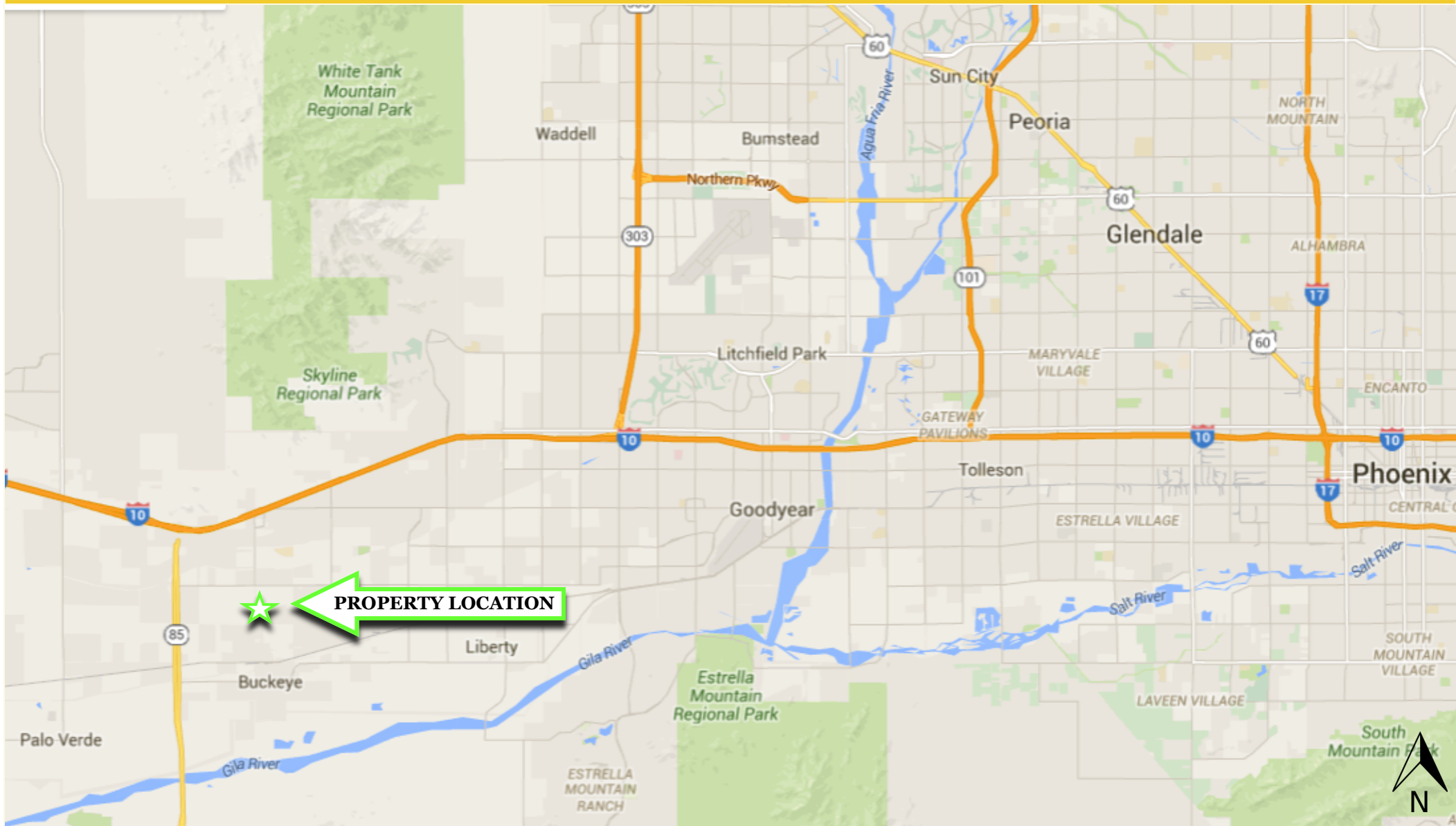
SCOTT TRUITT - DESIGNATED BROKER
 2711 EAST INDIAN SCHOOL ROAD SUITE 205
 PHOENIX, ARIZONA 85016

OFFICE: 623-977-4900
 MOBILE: 602-622-9099
 FAX: 888-901-4243

TRUITT@WESTERNLANDCO.NET

Notice: All information contained herein is based upon information and sources deemed to be reliable, however, Western Land Company, LLC., its Owners, Designated Broker, Officers or Assigns, and Sales Associates will not be held responsible for any inaccuracies; further, it is recommended to all parties to satisfy themselves as to the accuracy of all information provided.

RETAIL PAD - E/SEC MILLER RD. & SOUTHERN AVE. BUCKEYE, ARIZONA



SCOTT TRUITT - DESIGNATED BROKER
2711 EAST INDIAN SCHOOL ROAD SUITE 205
PHOENIX, ARIZONA 85016

OFFICE: 623-977-4900
MOBILE: 602-622-9099
FAX: 888-901-4243

TRUITT@WESTERNLANDCO.NET