

25'-11 1/2" EYE HEIGHT

WOOD STUDS @ 16" O.C.

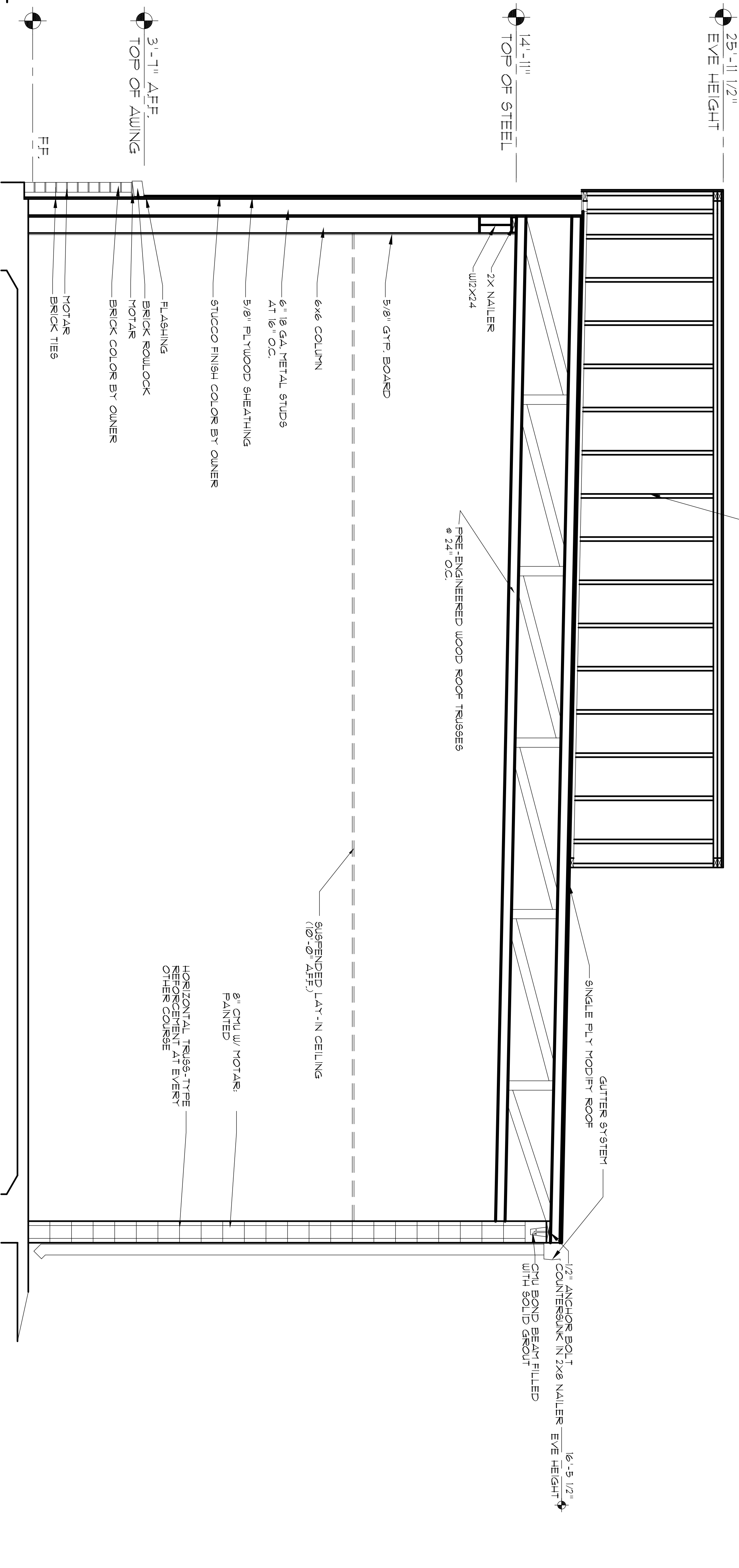
14'-11" TOP OF STEEL

3'-11" AFF. TOP OF AWING

F.F.

1 BUILDING SECTION

SCALE: 1/2" = 1'-0"



17'-11" EYE HEIGHT

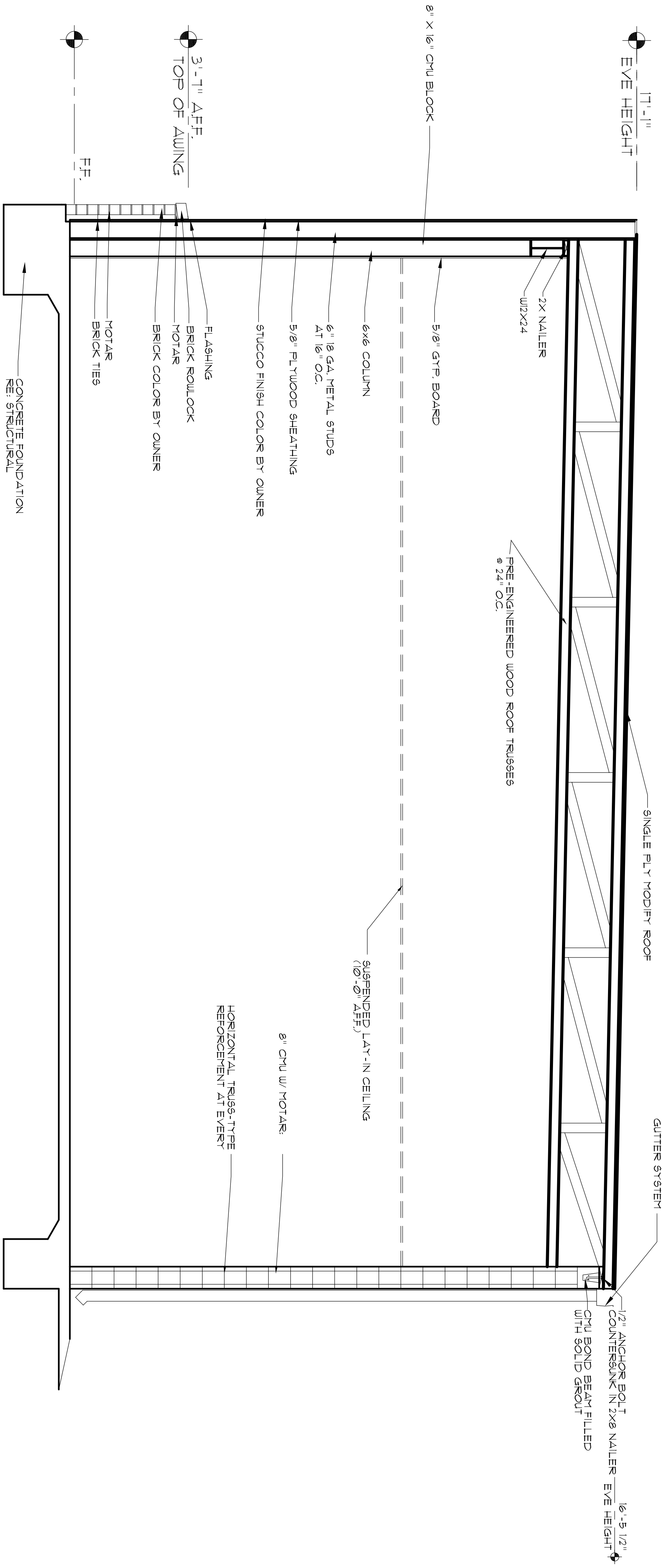
8" X 16" CHU BLOCK

3'-11" AFF. TOP OF AWING

F.F.

2 BUILDING SECTION

SCALE: 1/2" = 1'-0"



Revisions

Little Caesar ENTERPRISES, INC.
 10953 JOOR RD.
 CENTRAL, LOUISIANA 70218



MARK MATTHEWS AIA • ARCHITECT
 11802 Cloverland Ct. • Baton Rouge, LA • 70809 • (225) 756-5011

A30

Date	11-01-2013
Drawn	MPM
Checked	MPM
Job Number	
Sheet	