

OFFICE SUITE FOR LEASE

3525 Lorna Ridge Drive • Hoover, AL 35216



- ▶ Available Space:
 - ▶ Suite 101: 1,250 SF - 1st Floor
 - ▶ Suite 202: 1,250 SF - 2nd Floor
- ▶ Ample parking
- ▶ Located in the city of Hoover, no city occupational tax
- ▶ Easily accessible from I-459, US Hwy 31, & I-65
- ▶ Suite 101 Includes:
 - ▶ 2 Offices
 - ▶ 1 Large Conference Room
 - ▶ Reception Area
 - ▶ Private Restroom
 - ▶ Private Side Entrance
- ▶ Suite 202 Includes:
 - ▶ 2 Offices
 - ▶ 1 Large Conference Room
 - ▶ 1 Bathroom
 - ▶ Shared Kitchen Space
 - ▶ Private entrance via exterior stairs in rear

LEASE RATE: \$14.95, FULL SERVICE



Commercial Real Estate Specialists

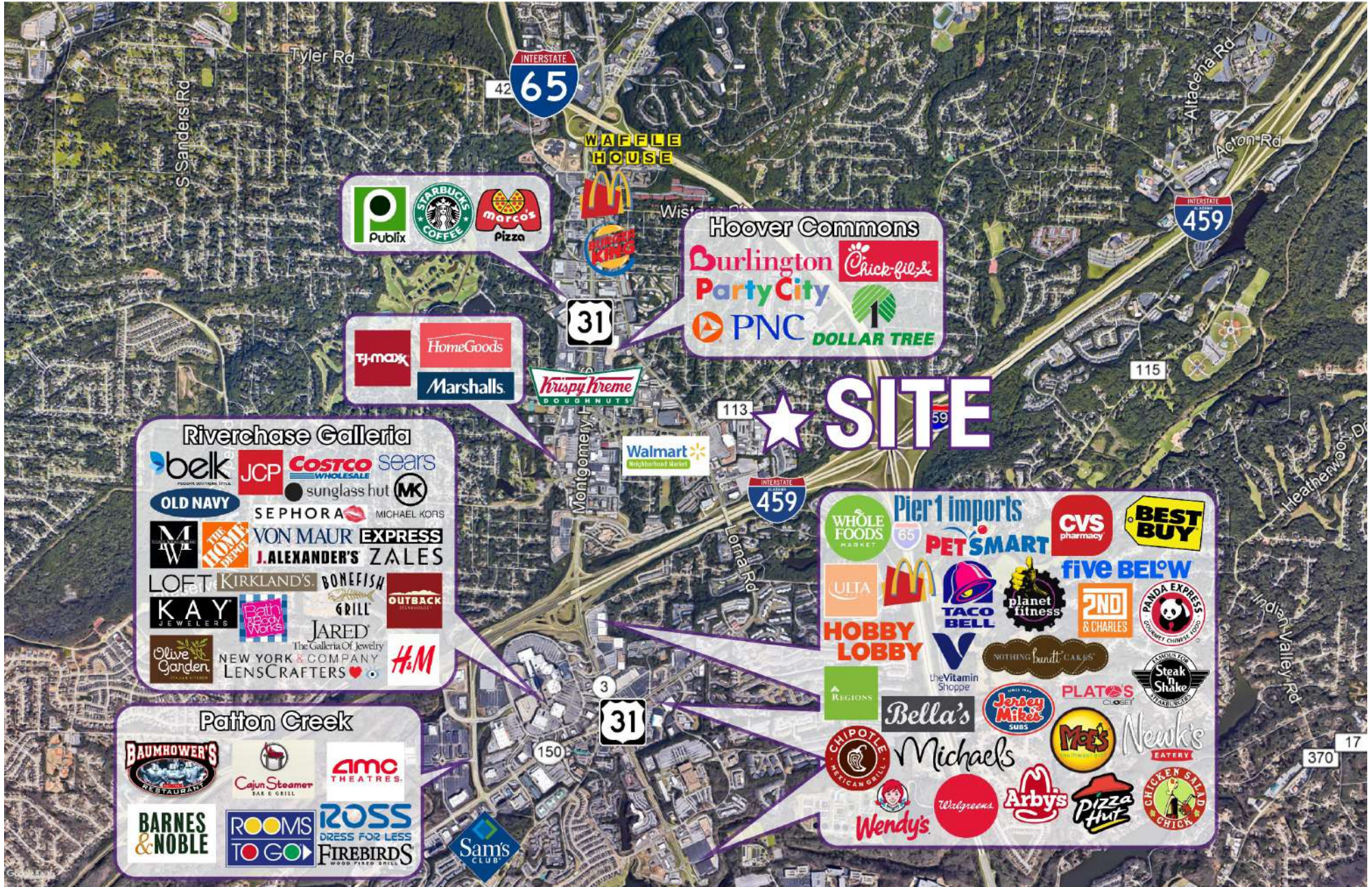
Andy Kaufmann

akaufmann@southpace.com

205.326.2222

OFFICE SUITE FOR LEASE

3525 Lorna Ridge Drive • Hoover, AL 35216



Riverchase Galleria

belk JCP COSTCO sears
 sunglass hut MK
 OLD NAVY SEPHORA MICHAEL KORS
 M HOME VON MAUR EXPRESS
 J.ALEXANDER'S ZALES
 LOFT KIRKLAND'S BONEFISH
 KAY JARED
 Olive Garden The Galleria Of Jewelry
 NEW YORK & COMPANY LENS CRAFTERS H.M.

Patton Creek

BAUMHOWER'S Cajun Steamer AMC THEATRES
 BARNES & NOBLE ROOMS TO GO ROSS DRESS FOR LESS
 FIREBIRDS Sam's CLUB

WHOLE FOODS MARKET Pier 1 imports CVS pharmacy BEST BUY
 PET SMART five BELOW
 ULTA TACO BELL planet fitness 2ND & CHARLES PANDA EXPRESS
 HOBBY LOBBY the Vitamin Shoppe NOTHING BUT GAK'S STEAK SHAKE
 PLATOS CLOSET STEAK SHAKE
 Bella's Jersey Mike's SUBS Me's NEWK'S
 MICHAEL'S Wendy's Walgreens Arby's PIZZA HUT CHICKEN SALAD CHICK

Publix STARBUCKS COFFEE Marco's Pizza

TJ-maxx HomeGoods Marshalls

Hoover Commons
 Burlington Party City Chick-fil-
 PNC DOLLAR TREE

Krispy Kreme DOUGHNUTS

Walmart Neighborhood Market

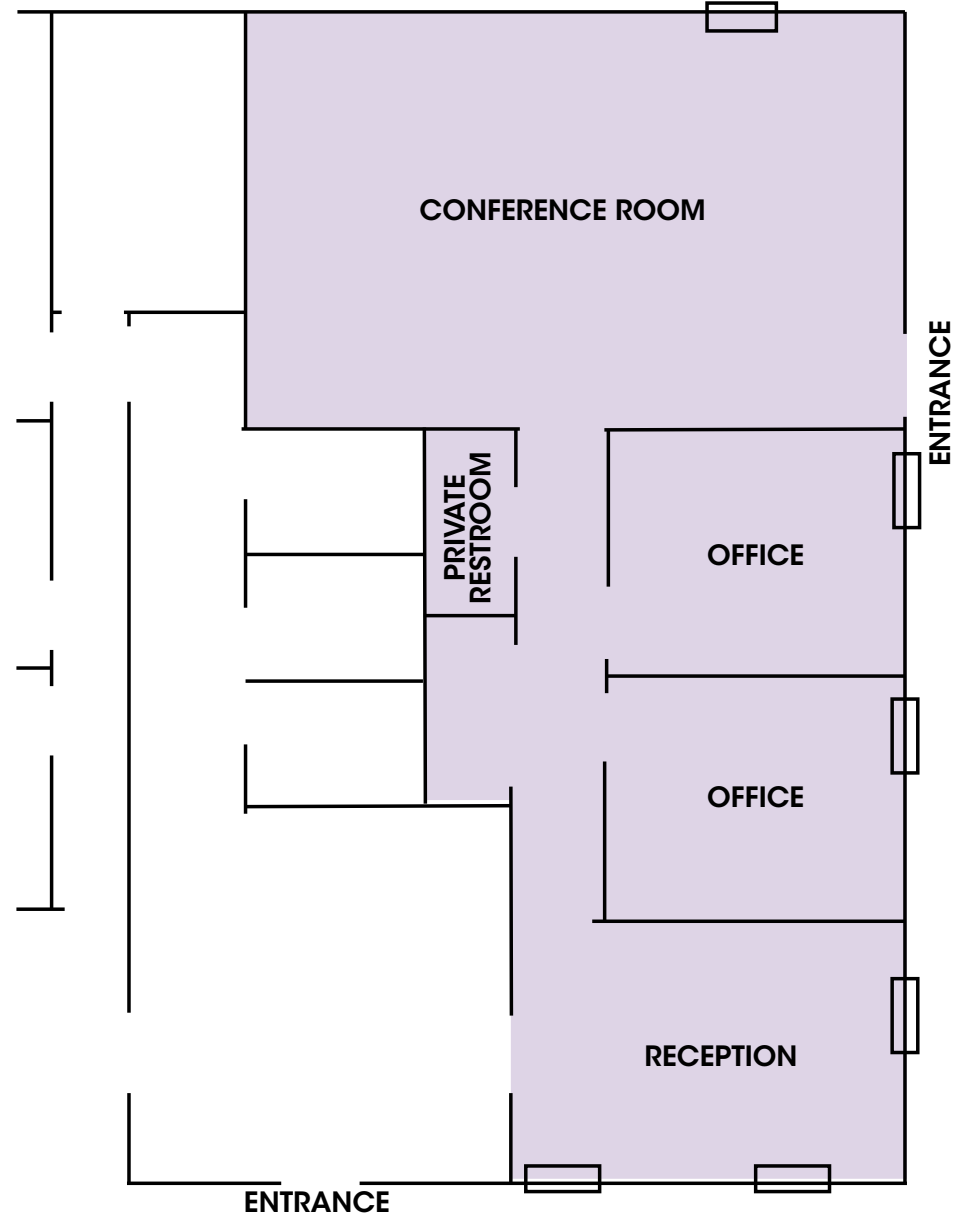
★ SITE

All information furnished with respect to the subject matter has been obtained from sources deemed reliable. No representation or warranty as to accuracy thereof is made and such information is submitted subject to change in price, omissions, errors, prior sale or withdrawal without notice.

OFFICE SUITE FOR LEASE

3525 Lorna Ridge Drive • Hoover, AL 35216

SUITE 101 FLOOR PLAN

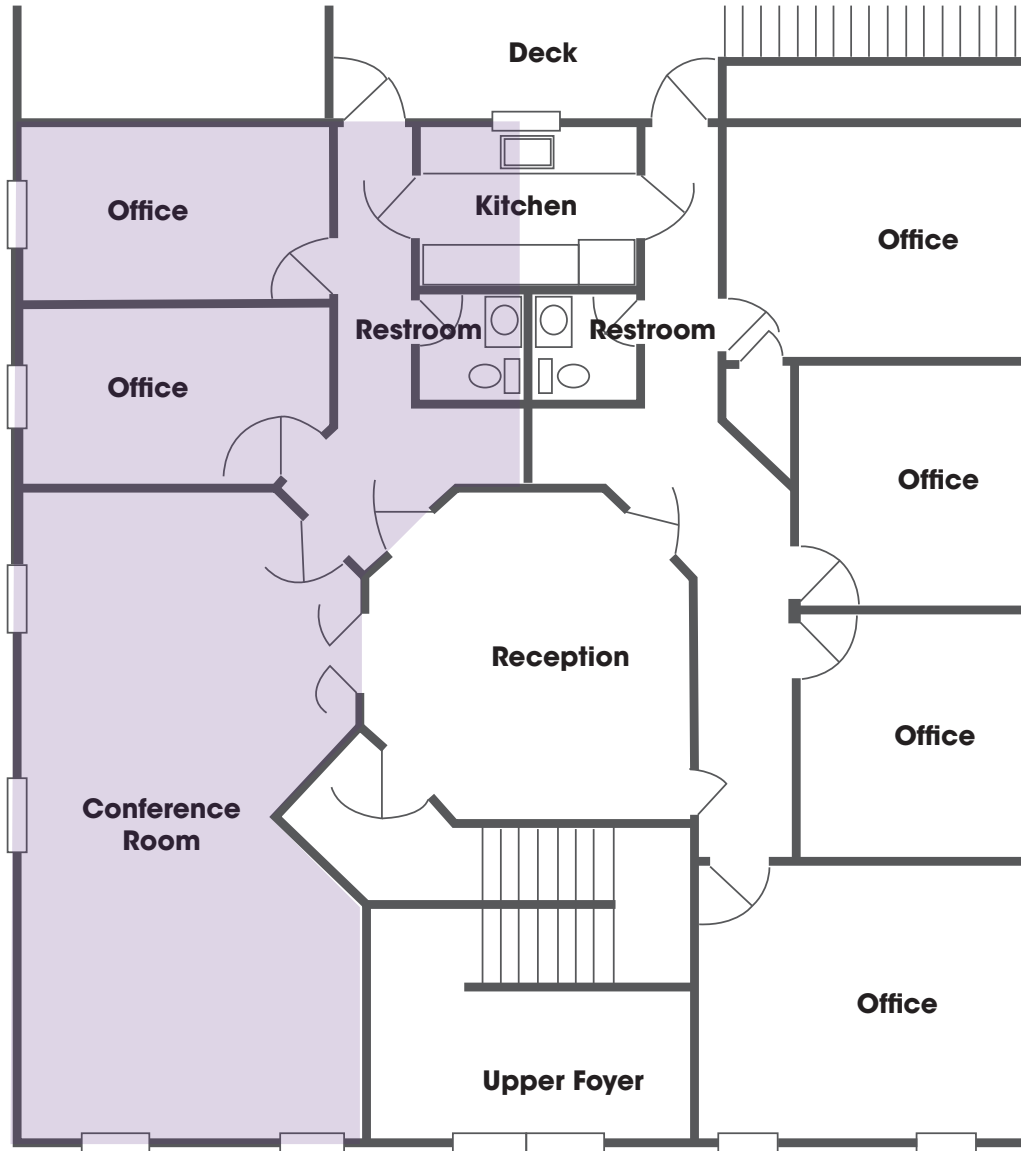


All information furnished with respect to the subject matter has been obtained from sources deemed reliable. No representation or warranty as to accuracy thereof is made and such information is submitted subject to change in price, omissions, errors, prior sale or withdrawal without notice.

OFFICE SUITE FOR LEASE

3525 Lorna Ridge Drive • Hoover, AL 35216

SUITE 202 FLOOR PLAN



All information furnished with respect to the subject matter has been obtained from sources deemed reliable. No representation or warranty as to accuracy thereof is made and such information is submitted subject to change in price, omissions, errors, prior sale or withdrawal without notice.