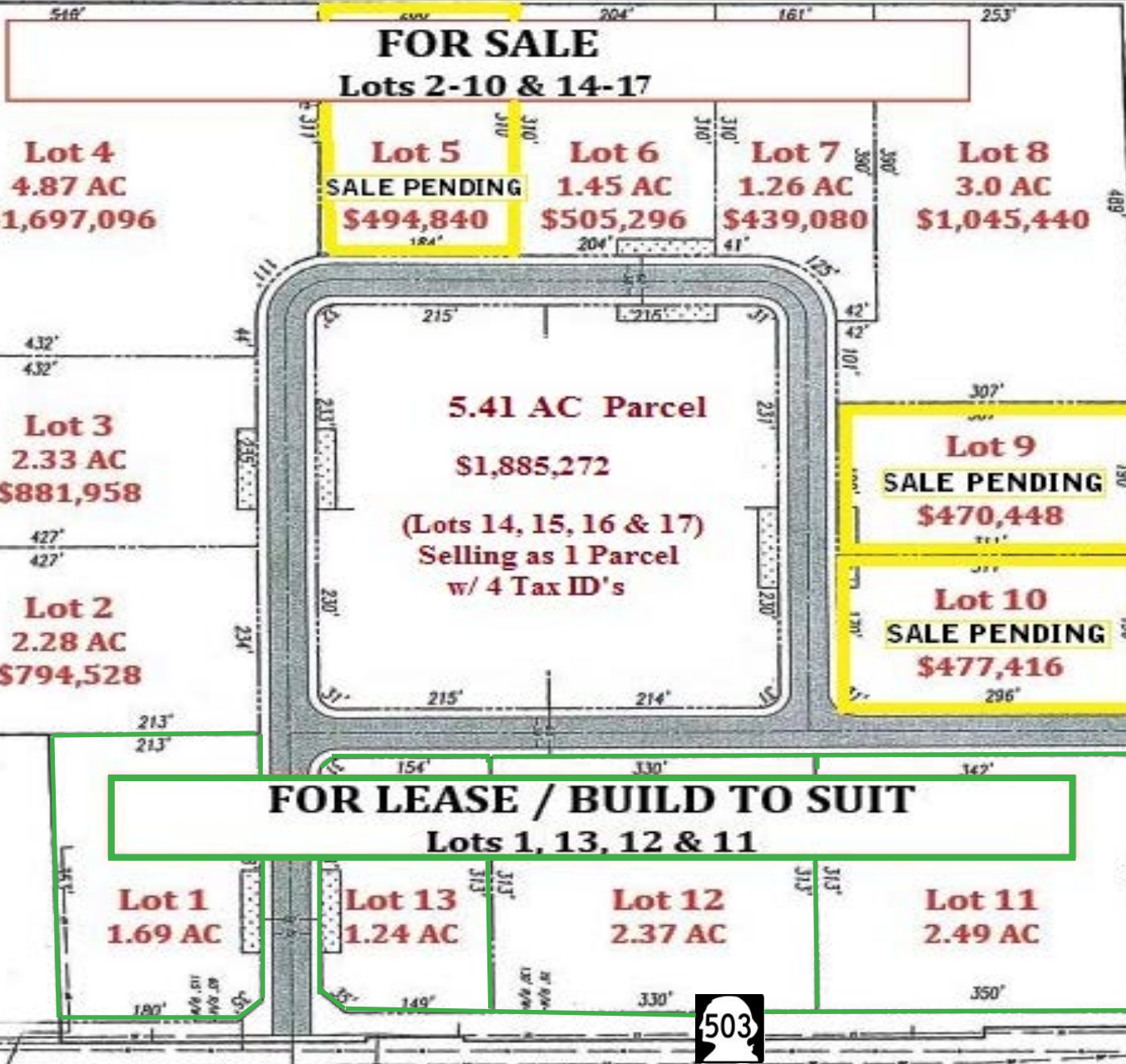


# FOR LEASE 4 Lots

Hwy 503 at 125th St. Vancouver, WA

Build-to-Suit

Light Industrial



View more listings at [SheaCRE.com](http://SheaCRE.com)

**Kelly Shea**, Broker  
Commercial-Industrial Specialist

360.823.5110 Office  
360.921.3710 Cell

Kelly@SheaCRE.com  
MAJ Top Producer

**Christian Hansen**, Broker  
Commercial-Industrial Specialist

360.823.5115 Office  
503.522.1953 Cell

Christian@SheaCRE.com  
Lic. WA/OR



**MAJ COMMERCIAL**  
REAL ESTATE

300 W 15th Street, Ste 201  
Vancouver, WA 98660

**SHEA COMMERCIAL**  
REAL ESTATE  
A DIVISION OF MAJCRE

# Glenwood Industrial Park



Aerial - Sale & Lease Site Location



# Glenwood Industrial Park

*Construction Started April 2019!*

- **Glenwood Industrial Park 36+ AC, 17 Lots Total**
- **4 Frontage Lots For Lease, will Build to Suit,  
\* See Subdivison Site Plan**
- **13 Lots For Sale, \$8 SF \* See Subdivision Site Plan**
- **Access/ Frontage onto Hwy 503**
- **Zoned - Light Industrial, Prime Development Ground**
- **Public; Sewer, Storm Water, Power, Water to Lots**
- **Excellent Area Population for Employee Possiblities**
- **Central Location for an Industrial Based Business**
- **Visible & Accessible to North & South Bound Traffic**
- **Within Close Access of I-5, I-205, SR 500, Hwy 14 &  
Easily Accessible to All Hwys via Hwy 503**



# Clark County Hwys

Located on Hwy 503 with Direct Access to;  
SR 500, I-205, Hwy 14 & I-5

