



12780 Waterford Lakes Parkway
Orlando, FL 32828

Owned by:



Medical/Professional Space Two Suites Available

FOR LEASE



Location



Floor Plan



Contact



Next

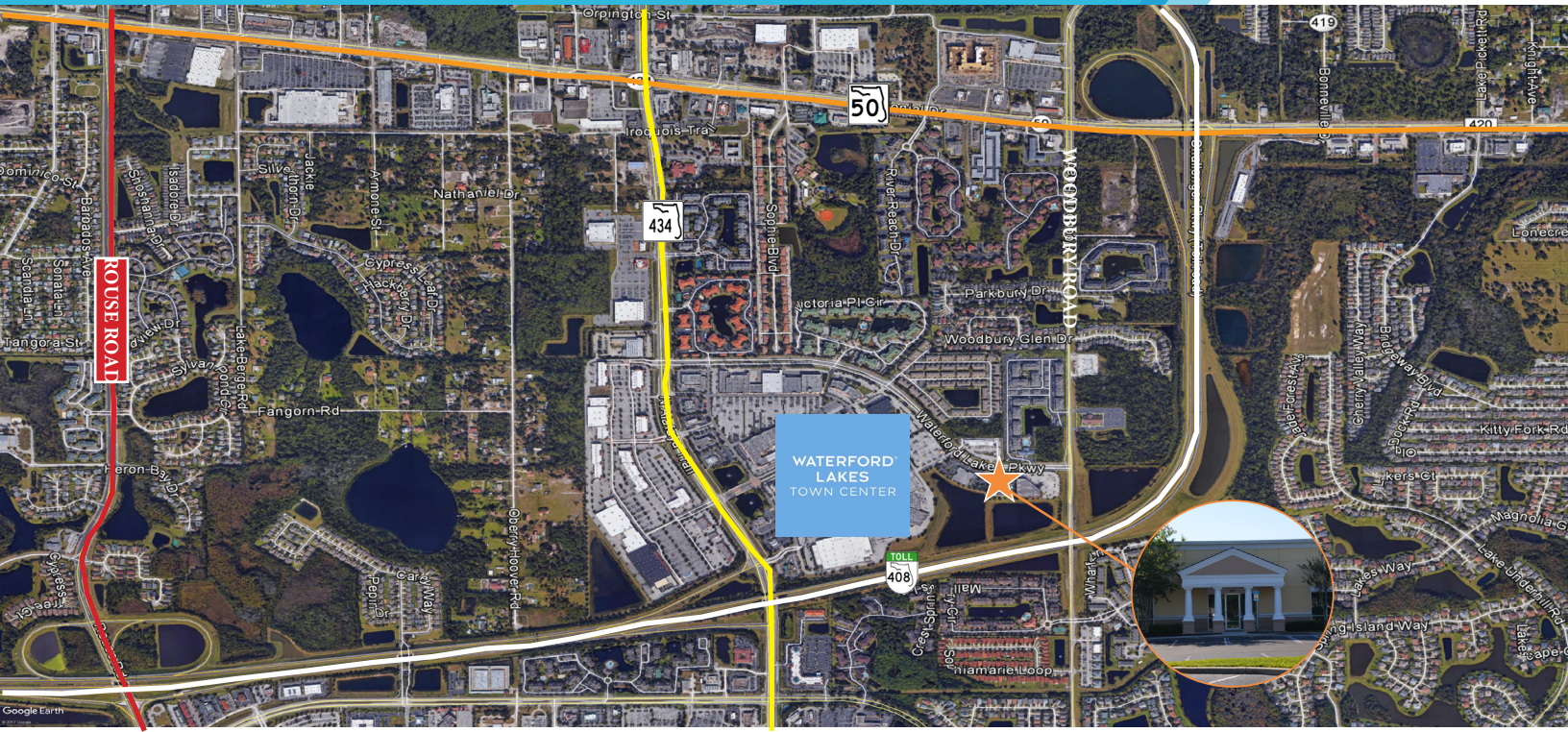
Emily Zinaich
Senior Vice President
407.440.6641
emily.zinaich@avisonyoung.com

Patrick Morrison
Associate
407.440.6649
patrick.morrison@avisonyoung.com



12780 Waterford Lakes Parkway
Orlando, FL 32828

Owned by:



Property Highlights

- 26,000± RSF Medical / Professional Office Building
- Monument signage available
- Convenient access to SR 408 (East/West Expressway), State Road 50, Lake Underhill Road and Alafaya Trail
- Adjacent to Waterford Lakes Town Center featuring an abundance of national / regional / local retailers and restaurants
- Parking Ratio: 5/1,000 RSF

Area Demographics:

Population	Avg HH Income
• 1-mile radius: 55,472	• 1-mile radius: \$61,961
• 3-mile radius: 62,807	• 3-mile radius: \$69,111
• 5-mile radius: 65,205	• 5-mile radius: \$73,860

Traffic Count: 17,000 vehicles



Home



Location



Floor Plan



Contact



Previous



Next

Emily Zinaich
Senior Vice President
407.440.6641
emily.zinaich@avisonyoung.com

Patrick Morrison
Associate
407.440.6649
patrick.morrison@avisonyoung.com



12780 Waterford Lakes Parkway
Orlando, FL 32828

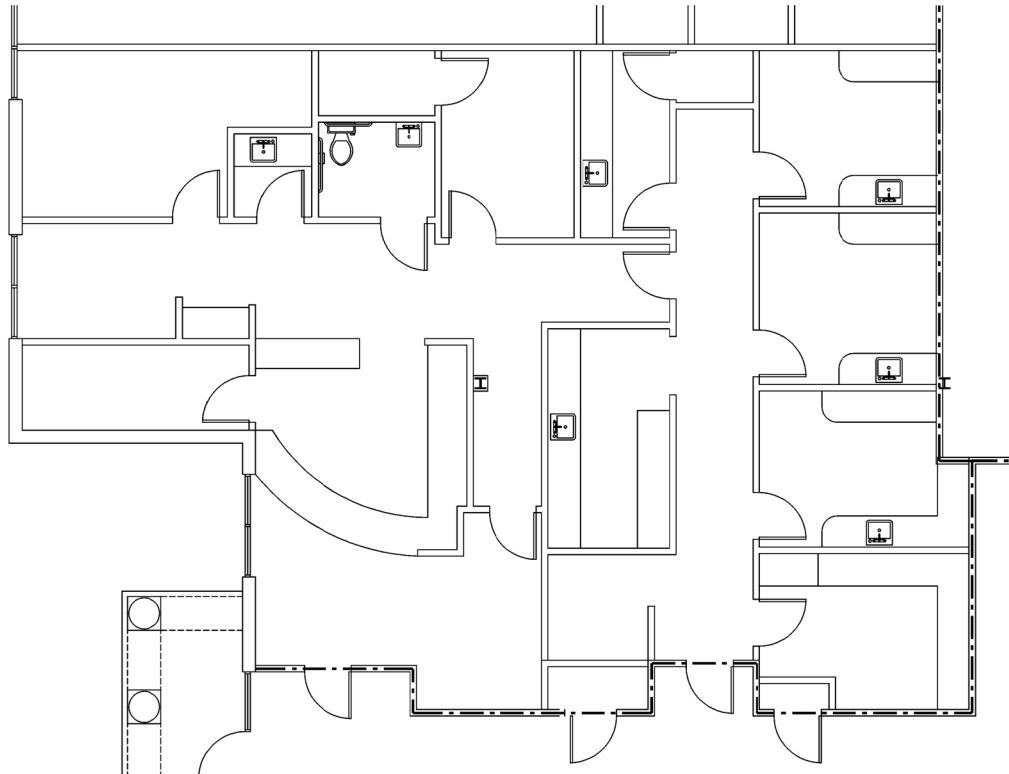
Owned by:



Suite 110 Dental Office

Office: 2,494± sf

Available October 1, 2020



Home



Location



Floor Plan



Contact



Previous



Next

Emily Zinaich
Senior Vice President
407.440.6641
emily.zinaich@avisonyoung.com

Patrick Morrison
Associate
407.440.6649
patrick.morrison@avisonyoung.com



12780 Waterford Lakes Parkway
Orlando, FL 32828

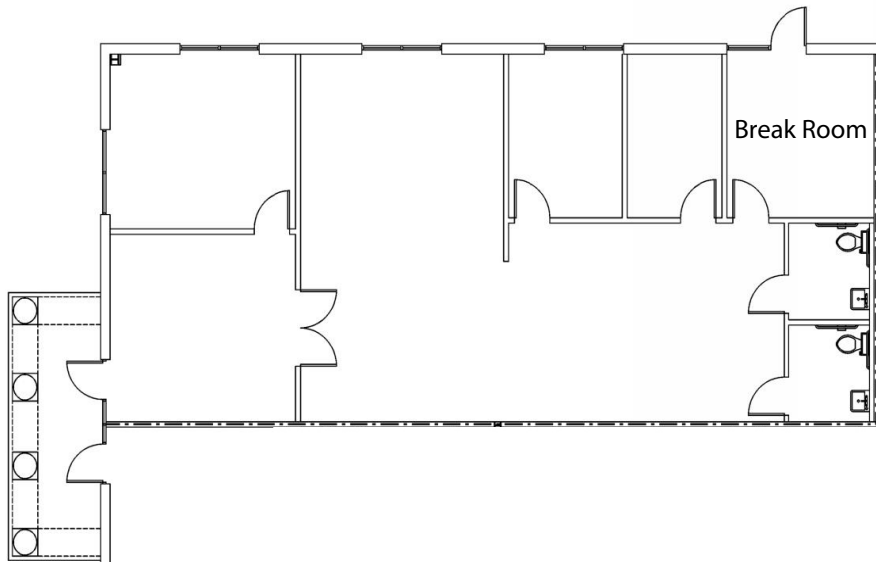
Owned by:



Suite 127

Office: 2,197± sf

Available October 1, 2020



Home



Location



Floor Plan



Contact



Previous

Emily Zinaich
Senior Vice President
407.440.6641
emily.zinaich@avisonyoung.com

Patrick Morrison
Associate
407.440.6649
patrick.morrison@avisonyoung.com