



FOR SALE/LEASE

2026 Summit Commerce Park
Twinsburg, Ohio 44087

**GREAT CRANE BUILDING
FOR MANUFACTURING OR
WAREHOUSING**

68,581 SF FREESTANDING FACILITY



Property Specifications

TOTAL SF	68,581 SF	HEAT	Air Rotation
OFFICE SF	7,145 SF (2015 updated)	AIR-CONDITIONING	Office
INDUSTRIAL SF	59,240 SF	ROOF	Metal / Rubber
MEZZANINE AREA	2,196 SF	POWER	2400A / 277/480V / 3P
LAND	5 acres	CRANES	Two (2) 3-ton to 7.5-ton
CONSTRUCTED	1992	BAY	30' X 50'
CONSTRUCTION	Brick / Block / Metal	PARKING	87 spaces
CEILING HEIGHT	22' 5" - 24' 5"		
DRIVE-IN DOORS	Six (6) - 1 - 14' x 16' 2 - 14' x 14'; 3 - 20' x 16'		
DOCKS	Four (4) - 2 Levelers		
SPRINKLER	Wet		
LIGHTING	T-5		
SALE PRICE	\$3,400,000.00		
LEASE RATE	\$4.95 NNN		

- Many recent upgrades
- Very clean building
- Fiber optics
- Climate control server room
- Excellent location close to I-480, I-271 and I-80 (Ohio Turnpike)

Simon Caplan, SIOR
Principal
216.525.1472
scaplan@crescorealestate.com

Eliot Kijewski, SIOR
Senior Vice President
216.525.1487
ekijewski@crescorealestate.com

Paul DiVincenzo
Sales Associate
216.525.1470
pdivincenzo@crescorealestate.com

3 Summit Park Drive
Suite 200
Cleveland, Ohio 44131
Main 216.520.1200
Fax 216.520.1828
crescorealestate.com

Independently Owned and Operated / A Member of the Cushman & Wakefield Alliance

Cushman & Wakefield Copyright 2015. No warranty or representation, express or implied, is made to the accuracy or completeness of the information contained herein, and same is submitted subject to errors, omissions, change of price, rental or other conditions, withdrawal without notice, and to any special listing conditions imposed by the property owner(s). As applicable, we make no representation as to the condition of the property (or properties) in question.



FOR SALE/LEASE

2026 Summit Commerce Park Twinsburg, Ohio 44087



Simon Caplan, SIOR
Principal
216.525.1472
scaplan@crecorealestate.com

Eliot Kijewski, SIOR
Senior Vice President
216.525.1487
ekijewski@crecorealestate.com

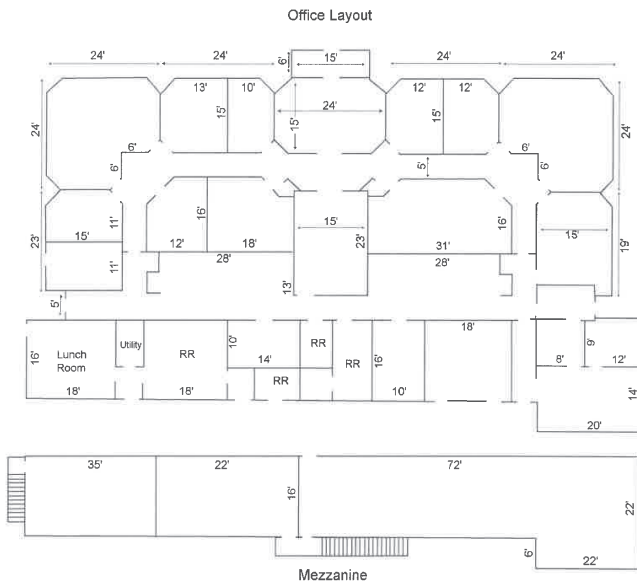
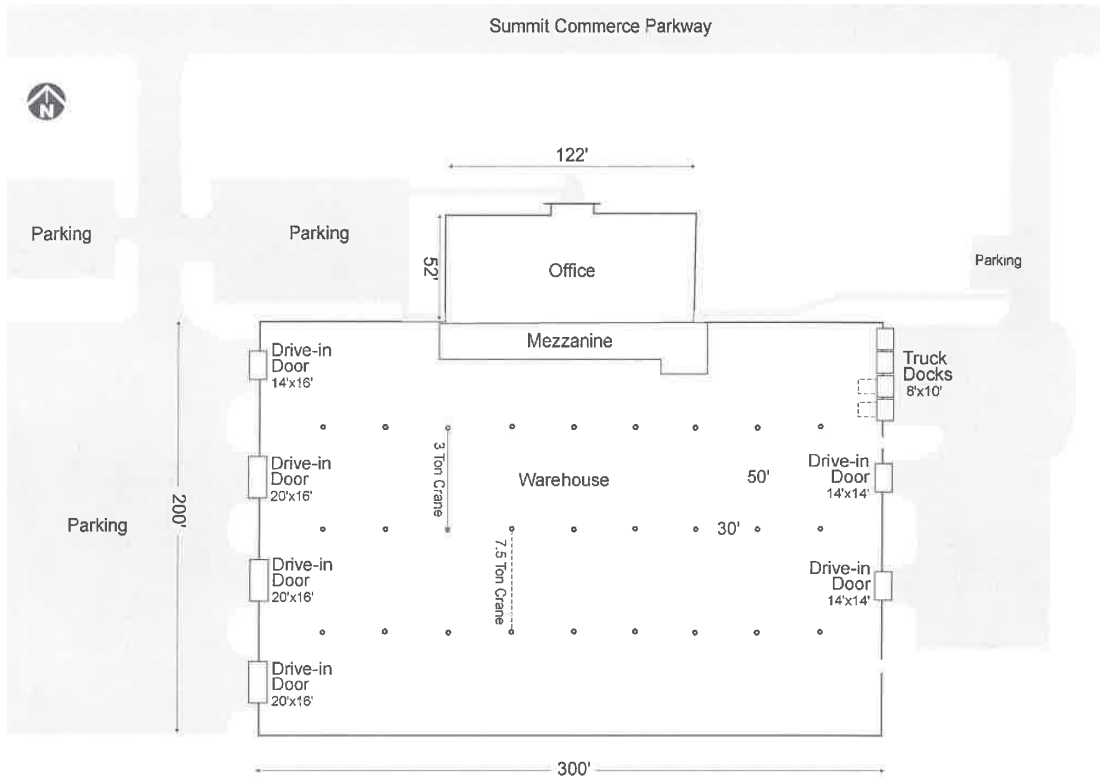
Paul DiVincenzo
Sales Associate
216.525.1470
pdivincenzo@crecorealestate.com

3 Summit Park Drive
Suite 200
Cleveland, Ohio 44131
Main 216.520.1200
Fax 216.520.1828
crecorealestate.com

Independently Owned and Operated / A Member of the Cushman & Wakefield Alliance

Cushman & Wakefield Copyright 2015. No warranty or representation, express or implied, is made to the accuracy or completeness of the information contained herein, and same is submitted subject to errors, omissions, change of price, rental or other conditions, withdrawal without notice, and to any special listing conditions imposed by the property owner(s). As applicable, we make no representation as to the condition of the property (or properties) in question.

Floor Plan



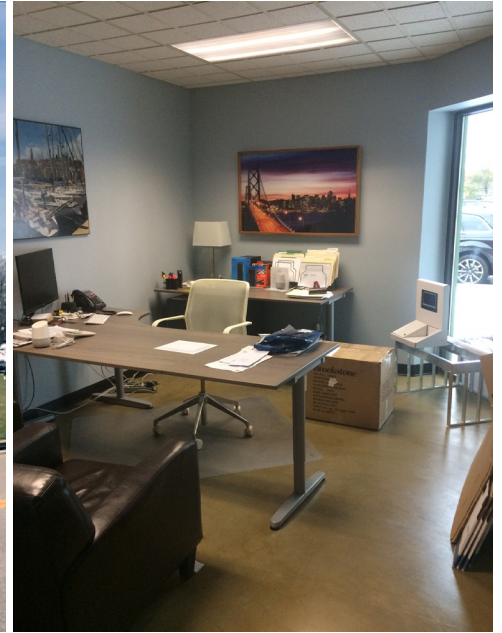
Simon Caplan, SIOR
Principal
216.525.1472
scaplan@crescorealestate.com

Eliot Kijewski, SIOR
Senior Vice President
216.525.1487
ekijewski@crescorealestate.com

Paul DiVincenzo
Sales Associate
216.525.1470
pdivincenzo@crescorealestate.com

3 Summit Park Drive
Suite 200
Cleveland, Ohio 44131
Main 216.520.1200
Fax 216.520.1828
crescorealestate.com

Photos - Office



Simon Caplan, SIOR
Principal
216.525.1472
scaplan@crescorealestate.com

Eliot Kijewski, SIOR
Senior Vice President
216.525.1487
ekijewski@crescorealestate.com

Paul DiVincenzo
Sales Associate
216.525.1470
pdivincenzo@crescorealestate.com

3 Summit Park Drive
Suite 200
Cleveland, Ohio 44131
Main 216.520.1200
Fax 216.520.1828
crescorealestate.com

Independently Owned and Operated / A Member of the Cushman & Wakefield Alliance

Cushman & Wakefield Copyright 2015. No warranty or representation, express or implied, is made to the accuracy or completeness of the information contained herein, and same is submitted subject to errors, omissions, change of price, rental or other conditions, withdrawal without notice, and to any special listing conditions imposed by the property owner(s). As applicable, we make no representation as to the condition of the property (or properties) in question.

Photos - Warehouse

