

LOWER
EAST SIDE

NEW YORK
NY

79 CLINTON STREET



CONCEPTUAL RENDERING

SPACE DETAILS

LOCATION

West block between Rivington and Delancey Streets

APPROXIMATE SIZE

Ground Floor	1,000 SF
Basement	800 SF
Total	1,800 SF

CEILING HEIGHT

Ground Floor	12 FT
Basement	10 FT

FRONTAGE

50 FT on Clinton Street

TERM

Long term

POSSESSION

Arranged

SITE STATUS

Currently Clancey

NEIGHBORS

Essex Crossing, Pig and Khao, Speedy Romeo, Blue Bottle Coffee, Black Crescent, and Donny Brook

COMMENTS

50-seat restaurant with 10-seat bar

Open kitchen

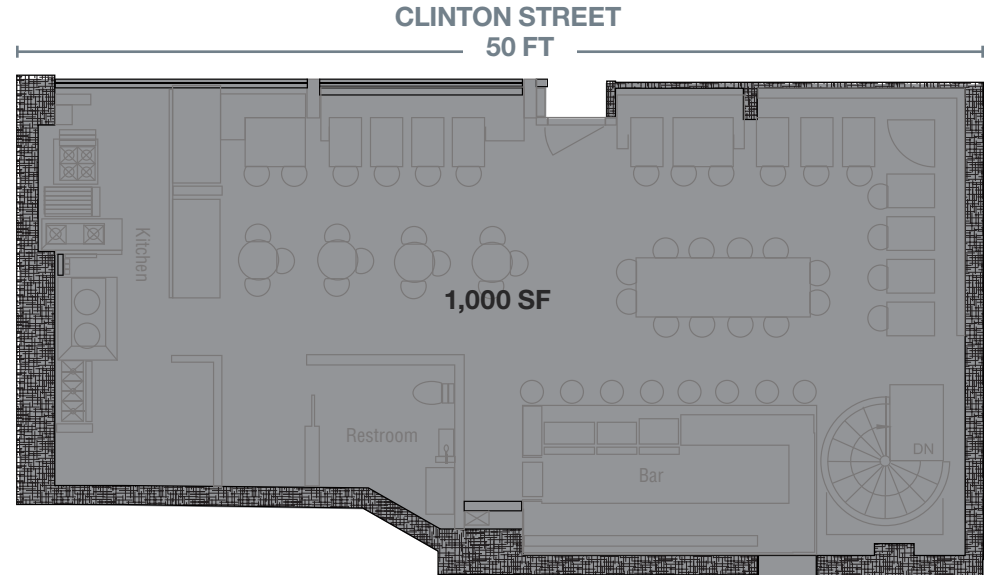
Full liquor license

Asking \$200,000 key money

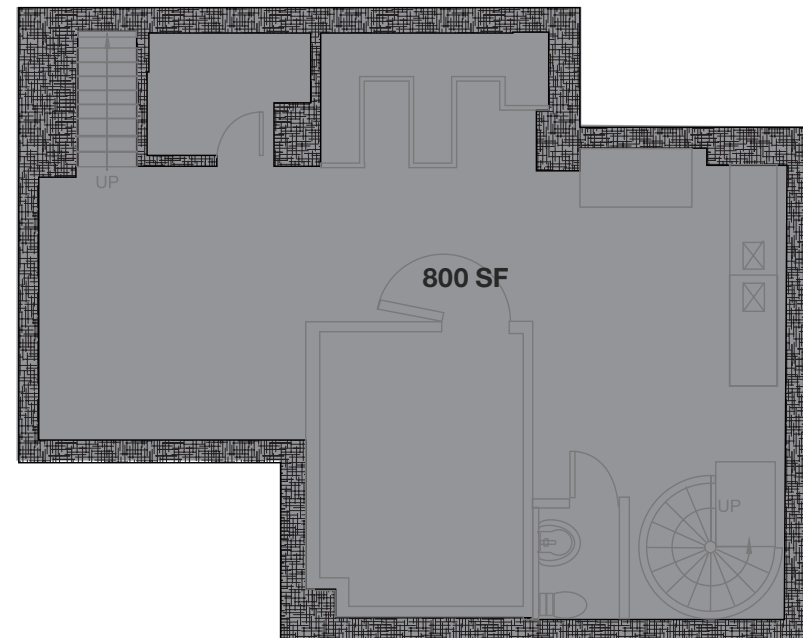
Located on a busy Lower East Side corridor with fantastic around-the-clock foot traffic

Steps from Essex Crossing, generating over 1,000 new residences, 400,000 SF of office space, and 450,000 SF of retail space over nine sites

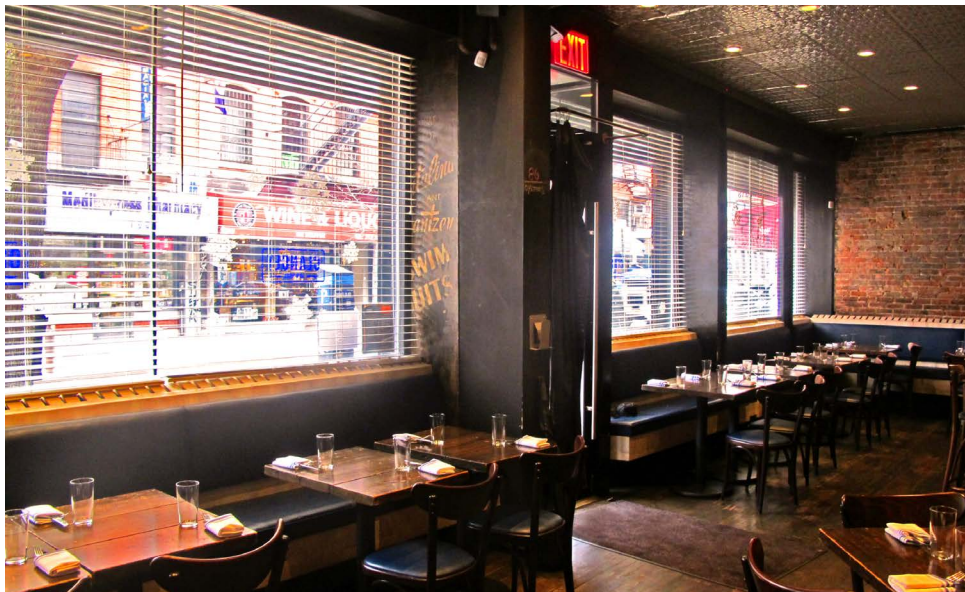
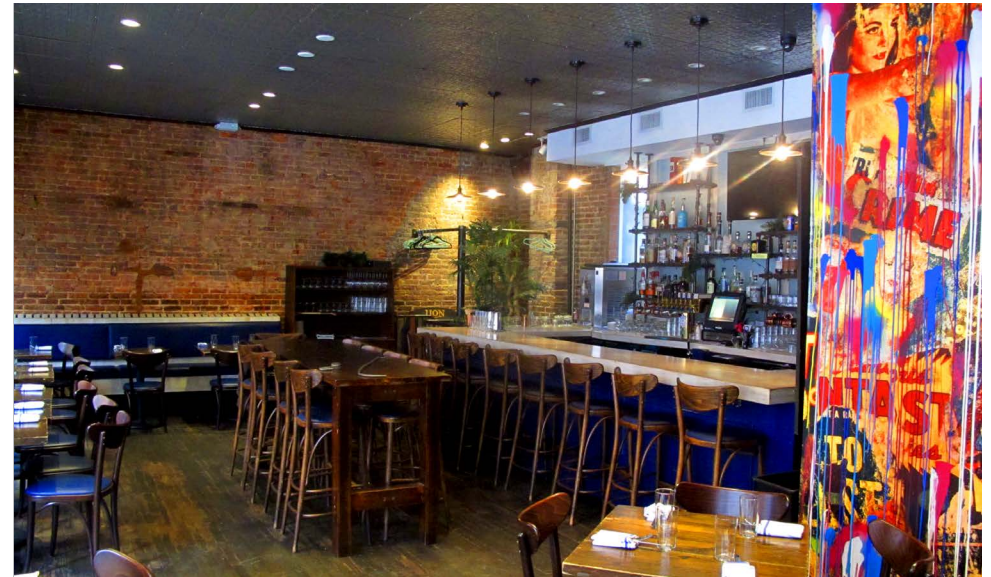
GROUND FLOOR



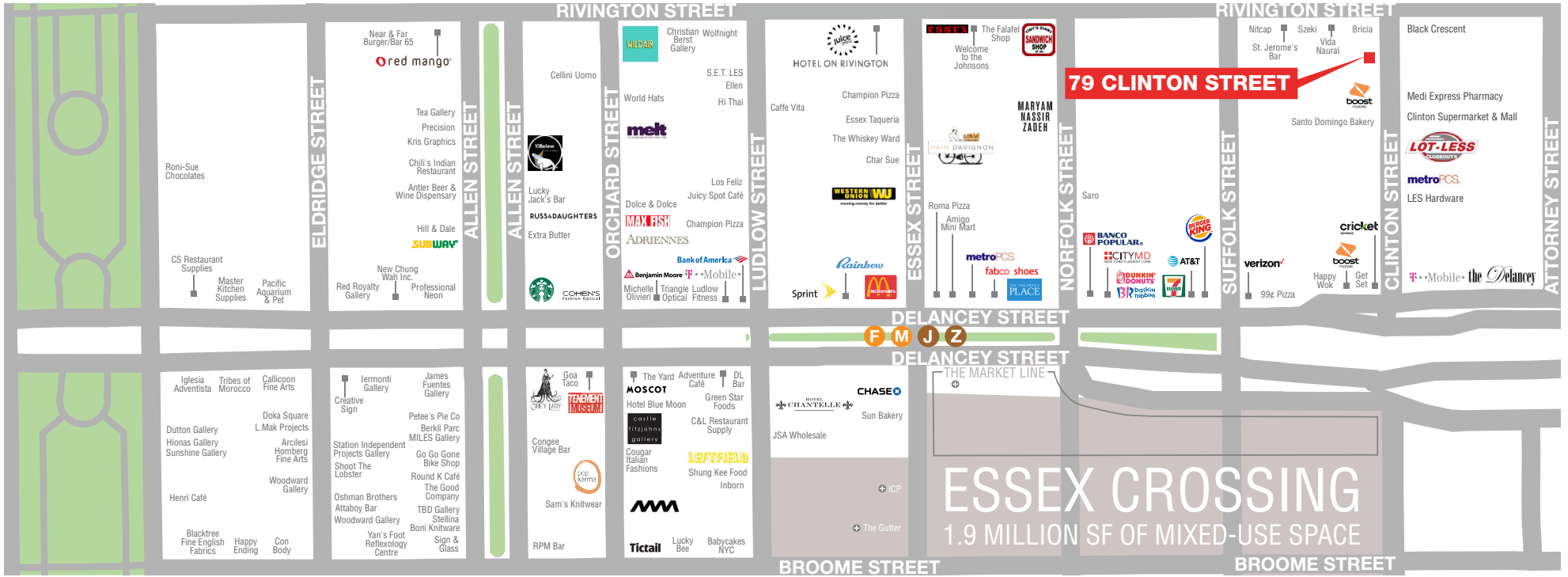
LOWER LEVEL



AREA NEIGHBORS



AREA RETAIL



CONTACT EXCLUSIVE AGENT

JASON PRUGER
212.372.2092
jpruger@ngkf.com



NGKF.COM



RKF.COM