

# 774 BROADWAY

CORNER OF BROADWAY & MARCUS GARVEY BLVD | BUSHWICK



# 774 BROADWAY

CORNER OF BROADWAY & MARCUS GARVEY BLVD | BUSHWICK

## SPACE A

### SIZE

Ground Floor **1,300 SF**

### FRONTAGE

22' on Broadway

### CEILING HEIGHT

12'

### ASKING RENT

Upon Request

### POSSESSION

Immediate

### TRANSPORTATION



### COMMENTS

- All uses considered
- Easily Vented
- Strong national co tenancy
- Steps from Woodfull Hospital

## SPACE B

### SIZE

Ground Floor **250 SF**

Second Floor **8,035 SF**

*Elevator and staircase in place*

### FRONTAGE

18' on Broadway

150' Wraparound

## SPACE C

### SIZE

Ground Floor **1,675 SF**

### FRONTAGE

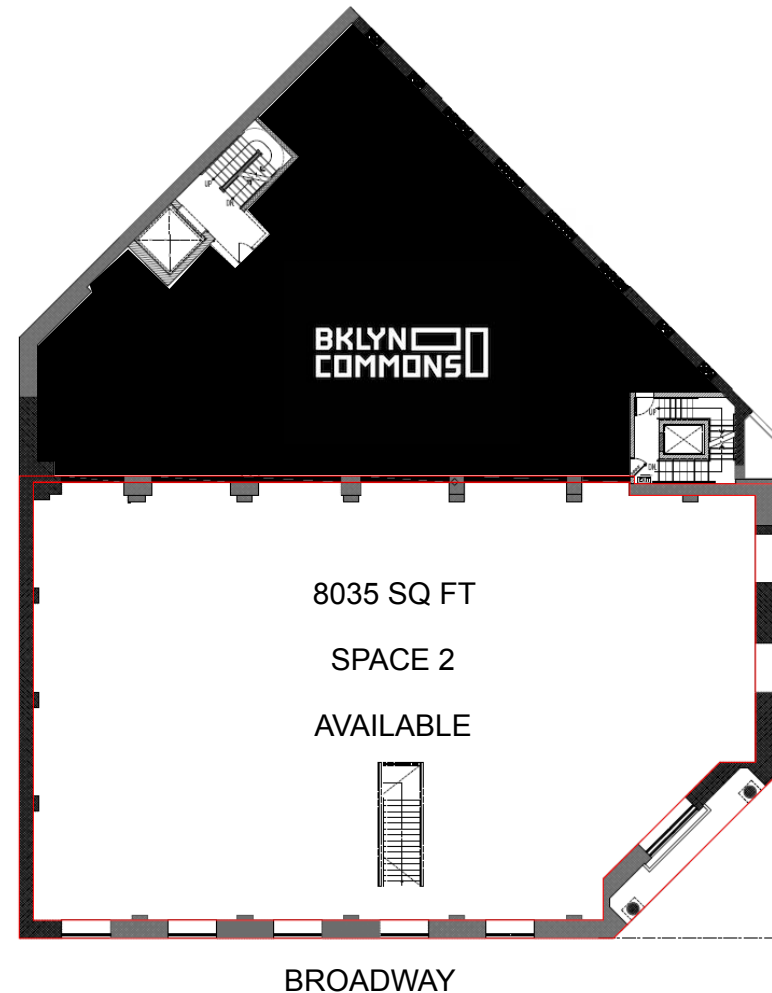
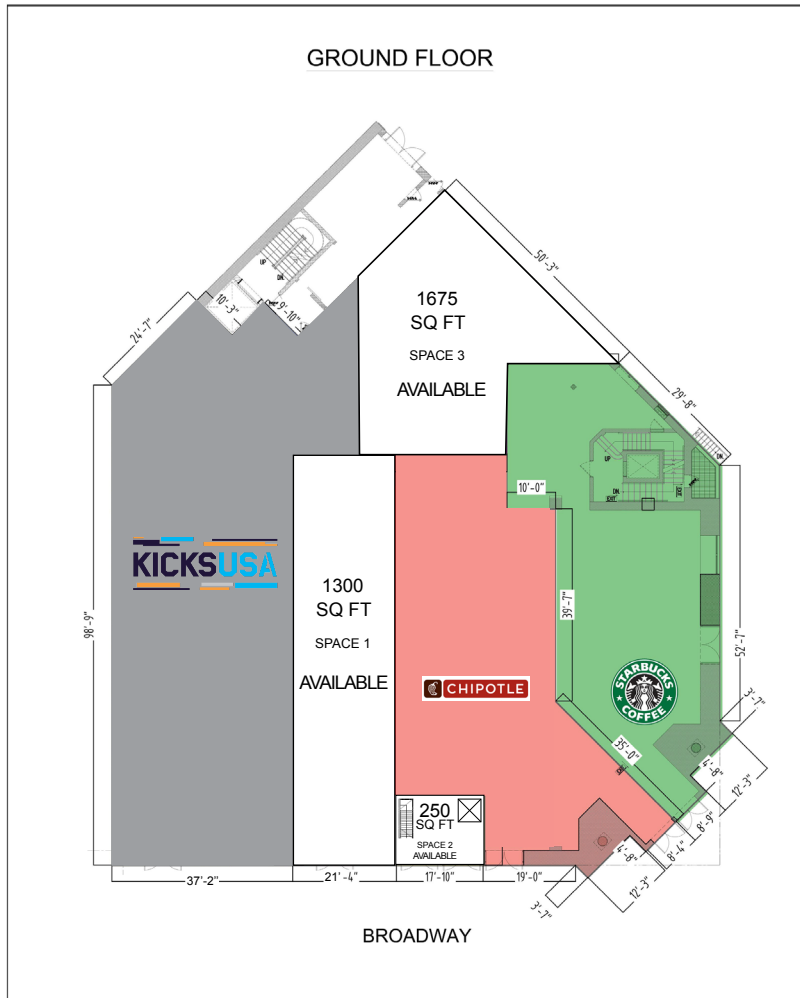
50' on Marcus Harvey

## NEIGHBORING TENANTS



# 774 BROADWAY

CORNER OF BROADWAY & MARCUS GARVEY BLVD | BUSHWICK



CONTACT OUR BROKER(S) FOR MORE INFORMATION



**KASSIN SABBAGH REALTY**  
1385 Broadway 22nd floor  
New York, NY 10018  
(212) 417 - 9217  
www.ksrny.com

**TEDDY ASHKENAZI**

TAshkenazi@ksrny.com

**732.284.9944**

**ZALMAN KAMISH**

SKamish@ksrny.com

**310.592.7398**

**MARC SITT**

MSitt@ksrny.com

**646.869.5528**

All information supplied in this marketing presentation and/or flyer is from sources deemed reliable and is furnished subject to errors, omissions, modifications, removal of listings from sale/lease and to any listing conditions. Any square footage, dimensions, floor plans and/or technical data set forth are approximations and are subject to further elaboration/confirmation.