

## 1,500 - 54,087 SF Available

- ± 578,900 SF open air mall
- Excellent accessibility from I-295
- Anchors: Target, HomeGoods, Marshalls, Stop & Shop
- Fitness and Entertainment draws
- High volume reports
- CAM - \$3.30  
RET - \$2.40  
INS - \$0.19  
Total - \$5.89

2019 DEMOGRAPHICS	3 MILE	5 MILE	7 MILE
Population	22,046	99,712	284,737
Med HH Income	\$83,487	\$69,851	\$58,209



**Ben Starr**  
617.239.3643  
bstarr@atlanticretail.com

**Rachael Willard**  
617.239.3603  
rwillard@atlanticretail.com

# Site Plan

- Tenant Space
- Available
- Not Part of Sale

- Unit #1 - 5,003 SF
- Unit #5 - 4,984 SF
- Unit #6 - 5,897 SF
- Unit #7 - 7,686 SF
- Unit #21 - 1,837 SF
- Unit #22 - 1,380 SF
- Unit #30 - 11,474 SF
- Unit #43 - 1,500 SF
- Unit #60 - 12,826 SF
- Unit #69 - 1,500 SF




**\$83,487**  
 MED HH INCOME  
 IN 3 MILE RADIUS

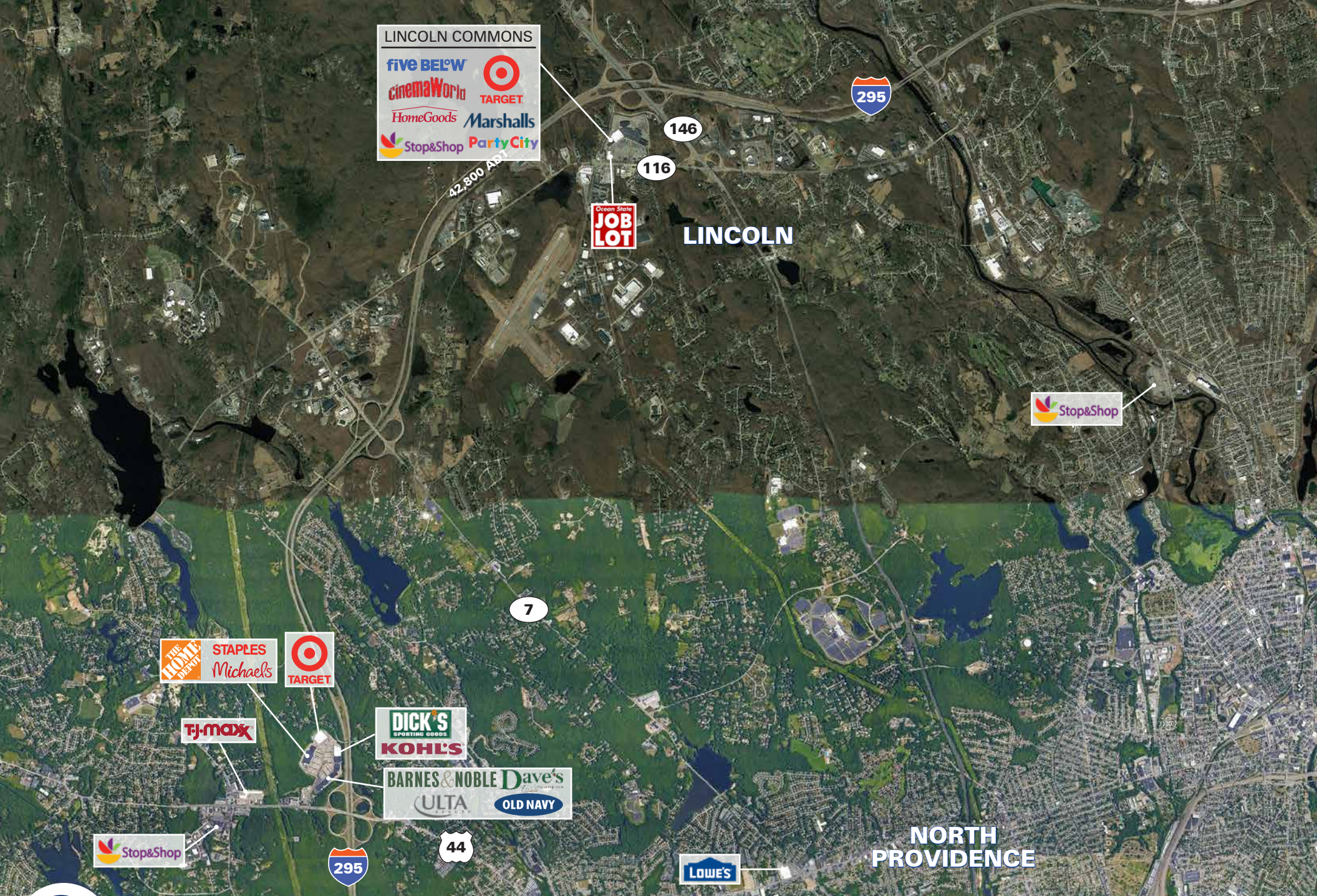
**140,000**  
 ANNUAL VISITORS  
 AT SHOPPING CTR



LINCOLN, RI  
**Lincoln Commons**

**Ben Starr**  
 617.239.3643  
 bstarr@atlanticretail.com

**Rachael Willard**  
 617.239.3603  
 rwillard@atlanticretail.com



LINCOLN COMMONS

five BELOW  
cinemaWorld  
HomeGoods  
Stop&Shop

TARGET  
Marshalls  
Party City

Open State  
**JOB LOT**

LINCOLN

Stop&Shop

THE HOME DEPOT  
STAPLES  
Michaels  
TARGET

TJ-maxx

DICK'S SPORTING GOODS  
KOHLS  
BARNES & NOBLE  
Dave's  
ULTA  
OLD NAVY

Stop&Shop

LOWE'S

NORTH PROVIDENCE



LINCOLN, RI  
Lincoln Commons

Ben Starr  
617.239.3643  
bstarr@atlanticretail.com

Rachael Willard  
617.239.3603  
rwillard@atlanticretail.com



LINCOLN, RI

Lincoln Commons

Ben Starr

617.239.3643  
bstarr@atlanticretail.com

Rachael Willard

617.239.3603  
rwillard@atlanticretail.com