

# 223rd Street Building

605 S 223rd Street, Des Moines, WA



**FOR SALE**

10,080 SF Warehouse/Flex Building in Des Moines  
Marina Market

**Brian Clapp**  
Senior Vice President  
206.248.7316  
bclapp@kiddermathews.com

**Kyle Walderhaug**  
Associate Vice President  
425.450.1117  
kylew@kiddermathews.com

[kiddermathews.com](http://kiddermathews.com)

More information available at  
[www.223rdbuilding.com](http://www.223rdbuilding.com)

**km** Kidder  
Mathews

# 223rd Street Building

605 S 223rd Street, Des Moines, WA

## Features

<b>BUILDING SIZE</b>	10,080 SF
<b>LOT SIZE</b>	22,843 SF (0.52 Acre)
<b>YEAR BUILT</b>	1969
<b>ZONING</b>	DC
<b>CEILING HEIGHT</b>	18' clear span
<b>POWER</b>	3-Phase heavy power
<b>LOADING</b>	Grade level loading door
<b>PARKING</b>	Approx. 35 stalls; additional street parking available
<b>GENERAL INFORMATION</b>	Fully air conditioned building Currently occupied by two (2) tenants on month-to-month leases Within walking distance to marina and amenities Excellent opportunity for an Owner/User
<b>ASKING PRICE</b>	<b>\$1,360,000</b>

More information available at  
[www.223rdbuilding.com](http://www.223rdbuilding.com)



**Brian Clapp**  
206.248.7316  
bclapp@kiddermathews.com

**Kyle Walderhaug**  
425.450.1117  
kylew@kiddermathews.com

[kiddermathews.com](http://kiddermathews.com)

[223rdbuilding.com](http://223rdbuilding.com)

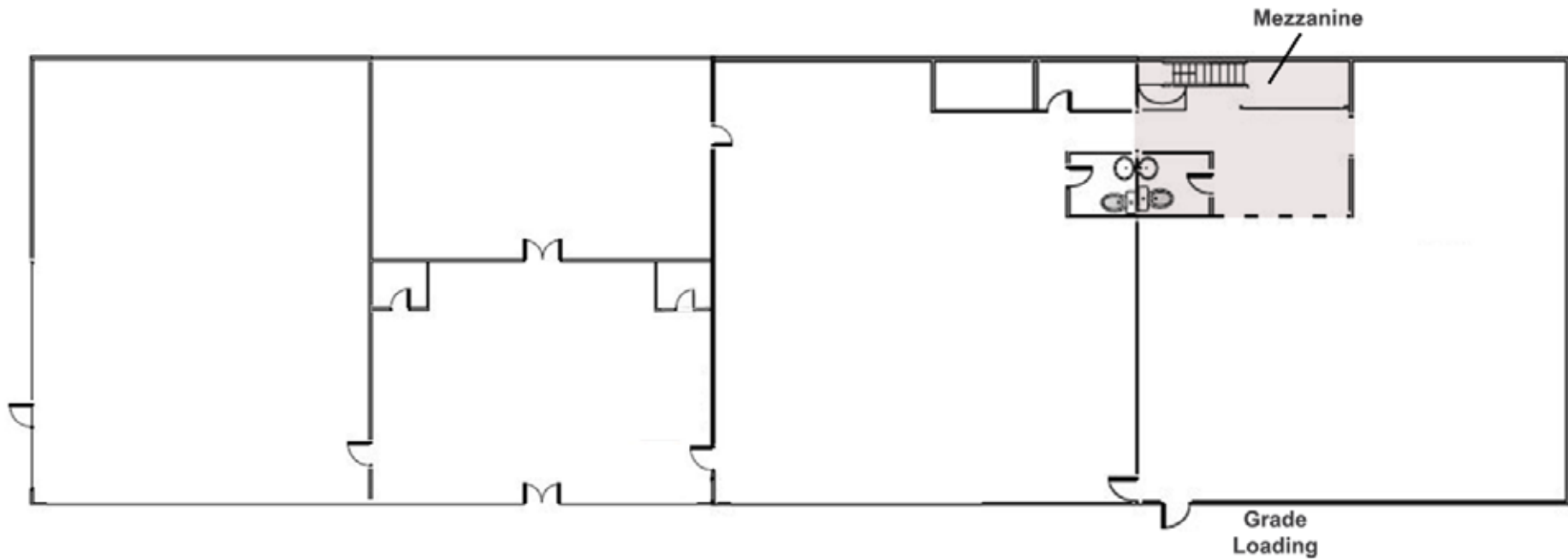
**km** Kidder  
Mathews

This information supplied herein is from sources we deem reliable. It is provided without any representation, warranty or guarantee, expressed or implied as to its accuracy. Prospective Buyer or Tenant should conduct an independent investigation and verification of all matters deemed to be material, including, but not limited to, statements of income and expenses. Consult your attorney, accountant, or other professional advisor.

# 223rd Street Building

605 S 223rd Street, Des Moines, WA

## Floor Plan



**Brian Clapp**  
206.248.7316  
bclapp@kiddermathews.com

**Kyle Walderhaug**  
425.450.1117  
kylew@kiddermathews.com

[kiddermathews.com](http://kiddermathews.com)

[223rdbuilding.com](http://223rdbuilding.com)



# Location Aerial

605 S 223rd Street, Des Moines, WA



**Brian Clapp**  
206.248.7316  
bclapp@kiddermathews.com

**Kyle Walderhaug**  
425.450.1117  
kylew@kiddermathews.com

[kiddermathews.com](http://kiddermathews.com)

[223rdbuilding.com](http://223rdbuilding.com)



This information supplied herein is from sources we deem reliable. It is provided without any representation, warranty or guarantee, expressed or implied as to its accuracy. Prospective Buyer or Tenant should conduct an independent investigation and verification of all matters deemed to be material, including, but not limited to, statements of income and expenses. Consult your attorney, accountant, or other professional advisor.