

**FOR SALE OR LEASE // 246 FEDERAL ROAD, BROOKFIELD CT**



**PROPERTY DESCRIPTION**

Ideal ground level units at the Brookfield Commons! Fantastic location just north of Costco with easy access to I-84. Unit sizes from 1,060 to 4,905 SF available. Potential uses include: Office, Medical/Dental, Rehab/PT, Spa/Beauty, showroom, retail, or laboratory space. Owner financing possible.

**\$2500 commission bonus per unit to the selling agent!**

**PROPERTY HIGHLIGHTS:**

- 106 FT TOTAL FRONTAGE
- ELECTRIC HEAT PUMP
- CENTRAL A/C
- CITY SEWER, WELL WATER
- C-1 ZONE (OFFICE, MEDICAL, RETAIL)
- EACH UNIT HAS PRIVATE BATH
- EACH UNIT HANDICAP ACCESSIBLE

**TAXES/ COMMON CHARGES:**

- D16 - TAXES \$5,251 PER YR - COMMON CHARGES \$535.20 PER MONTH
- D15 - TAXES \$3,805 PER YR - COMMON CHARGES \$447.11 PER MONTH
- D14 - TAXES \$2,750 PER YR - COMMON CHARGES \$271.11 PER MONTH

**OFFERING SUMMARY**

Unit D16 +/- 2,095 SF	\$251,400
Lease Rate:	\$14.00 SF Gross + Util.
Unit D15 +/- 1,750 SF	\$210,000
Lease Rate:	\$14.00 SF Gross + Util.
Unit D14 +/- 1,060 SF	\$127,200
Lease Rate:	\$14.00 SF Gross + Util.

DEMOGRAPHICS	1 MILE	5 MILES	10 MILES
Total Households	1,045	36,866	83,373
Total Population	2,716	100,422	229,579
Average HH Income	\$131,266	\$93,607	\$103,774



**MICK CONSALVO**

Broker  
 203.241.5188  
 mconsalvo@towercorp.com

**FOR SALE OR LEASE // 246 FEDERAL ROAD, BROOKFIELD CT**



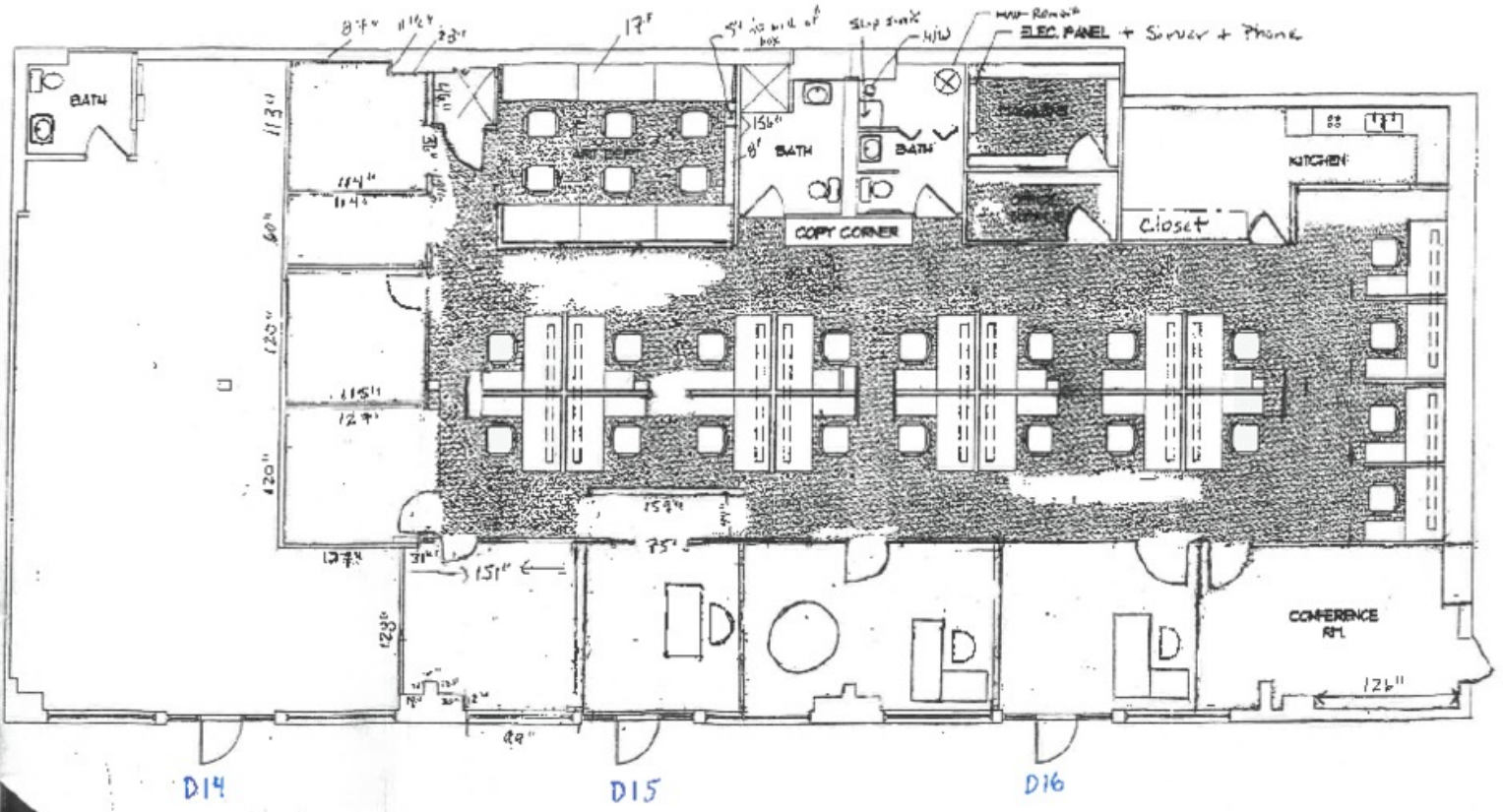
**MICK CONSALVO**

*Broker*

203.241.5188

mconsalvo@towercorp.com

**FOR SALE OR LEASE // 246 FEDERAL ROAD, BROOKFIELD CT**



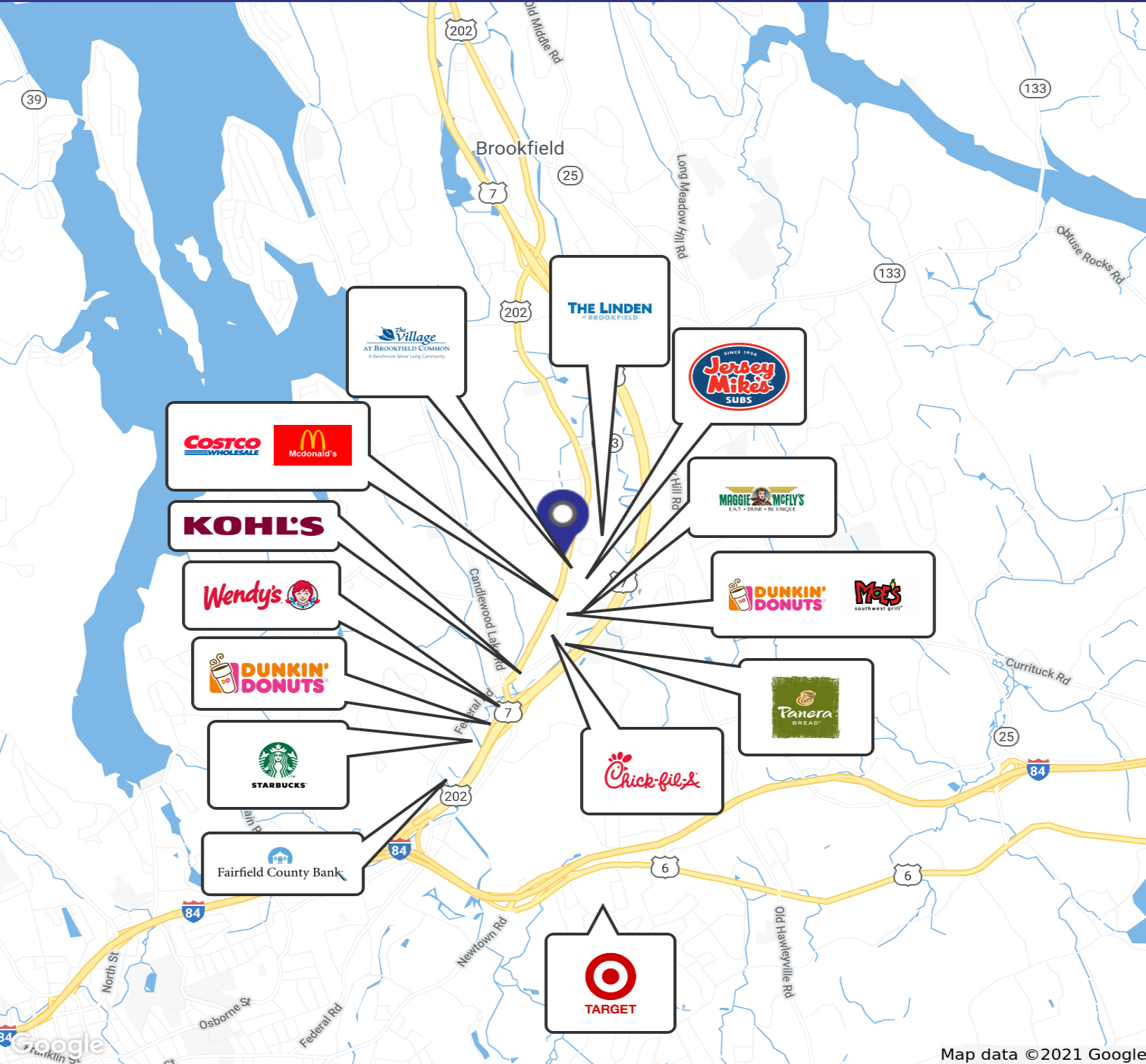
**MICK CONSALVO**

Broker

203.241.5188

mconsalvo@towercorp.com

FOR SALE OR LEASE // 246 FEDERAL ROAD, BROOKFIELD CT



Map data ©2021 Google



**MICK CONSALVO**

Broker

203.241.5188

mconsalvo@towercorp.com

**FOR SALE OR LEASE // 246 FEDERAL ROAD, BROOKFIELD CT**



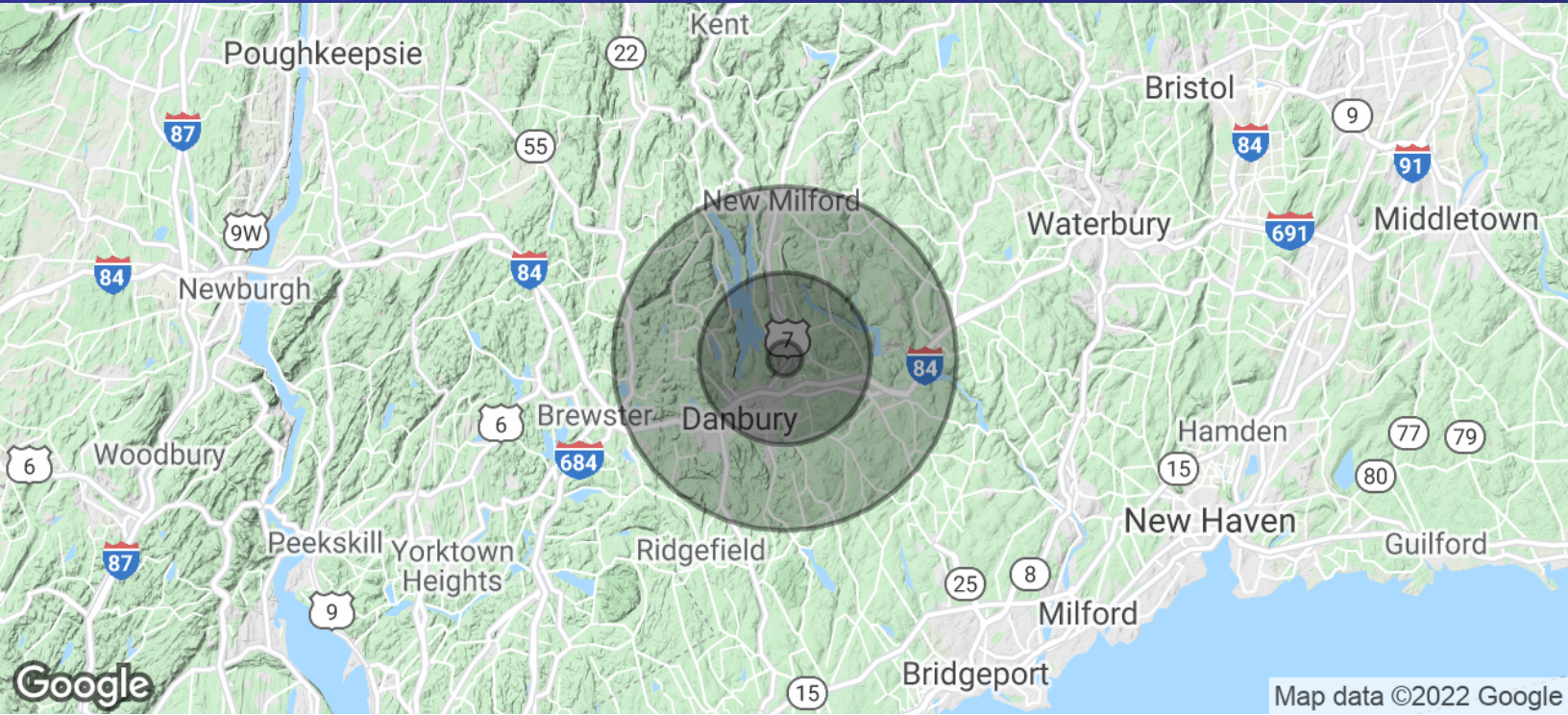
**MICK CONSALVO**

*Broker*

203.241.5188

mconsalvo@towercorp.com

**FOR SALE OR LEASE // 246 FEDERAL ROAD, BROOKFIELD CT**



POPULATION	1 MILE	5 MILES	10 MILES
Total Population	2,716	100,422	229,579
Average Age	41.0	38.6	39.7
Average Age (Male)	37.2	37.8	38.8
Average Age (Female)	43.9	39.4	40.5

HOUSEHOLDS & INCOME	1 MILE	5 MILES	10 MILES
Total Households	1,045	36,866	83,373
# of Persons per HH	2.6	2.7	2.8
Average HH Income	\$131,266	\$93,607	\$103,774
Average House Value	\$423,310	\$419,987	\$442,678

\* Demographic data derived from 2010 US Census



**MICK CONSALVO**

Broker  
203.241.5188  
mconsalvo@towercorp.com