

Medical Office

3443 Villa Lane #9, Napa CA

Offered at \$595,000

or for Lease at \$3.95 SF/Mo.

NEW
PRICING

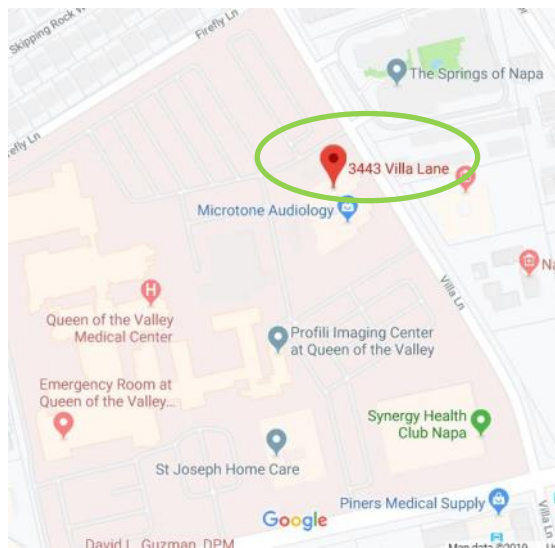


± 1,113 SF

- Efficient Medical Floorplan
- Nice Light & Amenities
- 2nd Floor w/Elevator Access
- Corner Suite
- Waiting Area
- Reception Work Area
- Three Treatment Rooms
- Doctor's Office
- Restroom & Storage
- Designated Parking for Doctors Under Carport
- Adjacent to Queen of the Valley Medical Center
- Monument Directory at Street Frontage

Zoning

Medical Office (OM)



Michael J. Moffett
(707) 479-1976
mmoffett@cnapavalley.com
Lic.#00946472

Cathy D'Angelo Holmes
(707) 304-3338
cholmes@cnapavalley.com
Lic.#01355085

**COLDWELL
BANKER
COMMERCIAL**

BROKERS OF THE VALLEY

1040 MAIN ST. #101
NAPA, CA 94559

AVAILABLE FOR SALE OR LEASE

NAPACOMMERCIALPROPERTIES.COM

PHOTO GALLERY



3443 Villa Ln. #9 Entry



WAITING AREA



HALLWAY



DOCTOR'S OFFICE

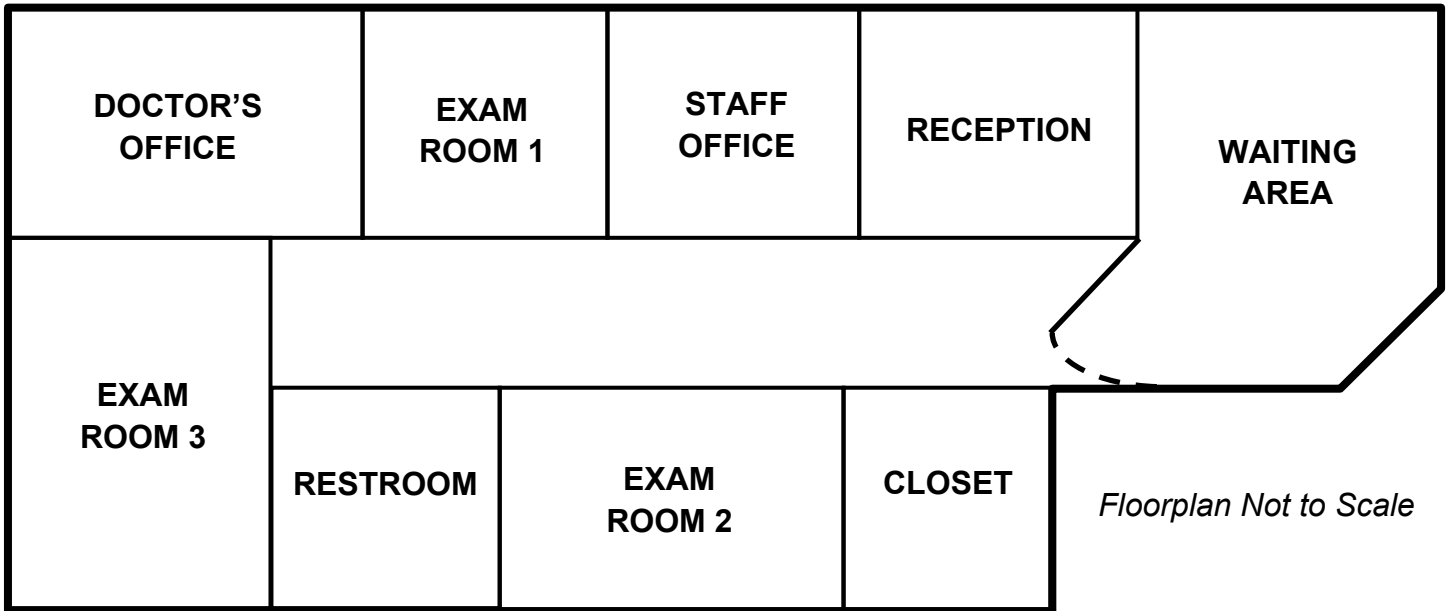


TREATMENT ROOM 3

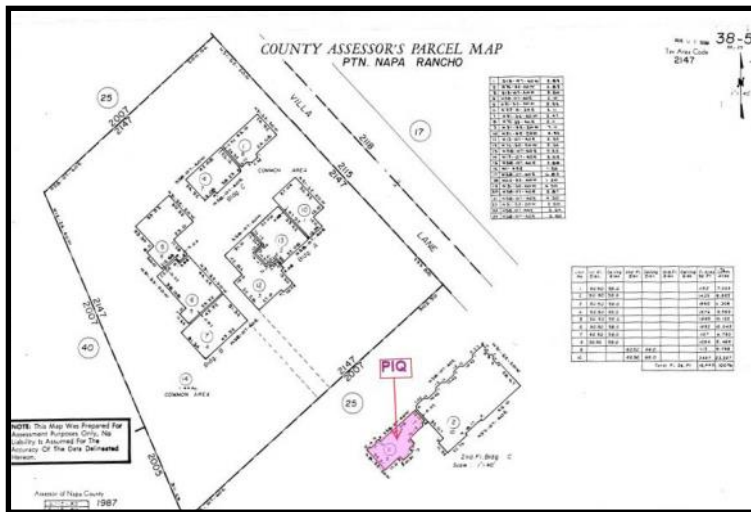


COURTYARD WITH POND

FLOOR PLAN



SITE PLAN



Michael J. Moffett
 (707) 479-1976
 mmoffett@cnapavalley.com
 Lic.#00946472

Cathy D'Angelo Holmes
 (707) 304-3338
 cholmes@cnapavalley.com
 Lic.#01355085



BROKERS OF THE VALLEY

1040 MAIN ST. #101
 NAPA, CA 94559