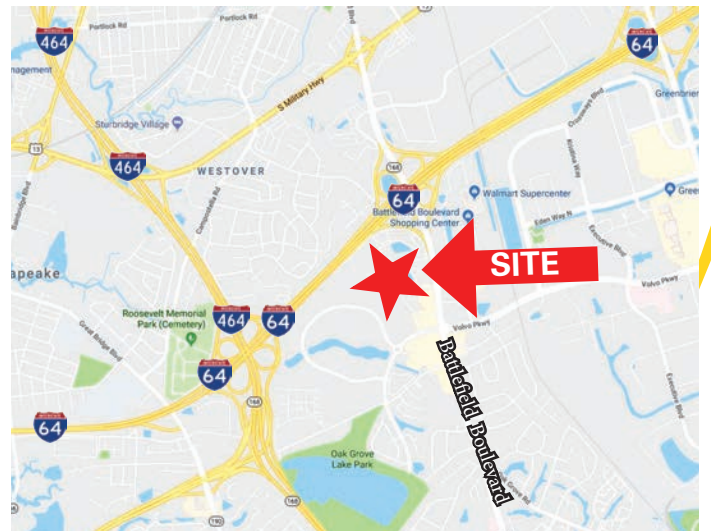


OFFICE SUITE FOR LEASE

205 Tintern Court
Chesapeake, VA 23320



- 3,225 s.f.
 - ◆ Downstairs: 2,183 s.f.
 - ◆ Upstairs: 1,042 s.f.
- 10 designated parking spaces
- Reception and individual offices up front with open floor plan in the rear
- Natural Gas and Electricity separately metered
- Asking Rent: \$15.50 psf, NNN (\$2.06 psf)



CONTACT:

BOBBY BEASLEY, III
(757) 640-8241
bobbybeasley3@harveylindsay.com

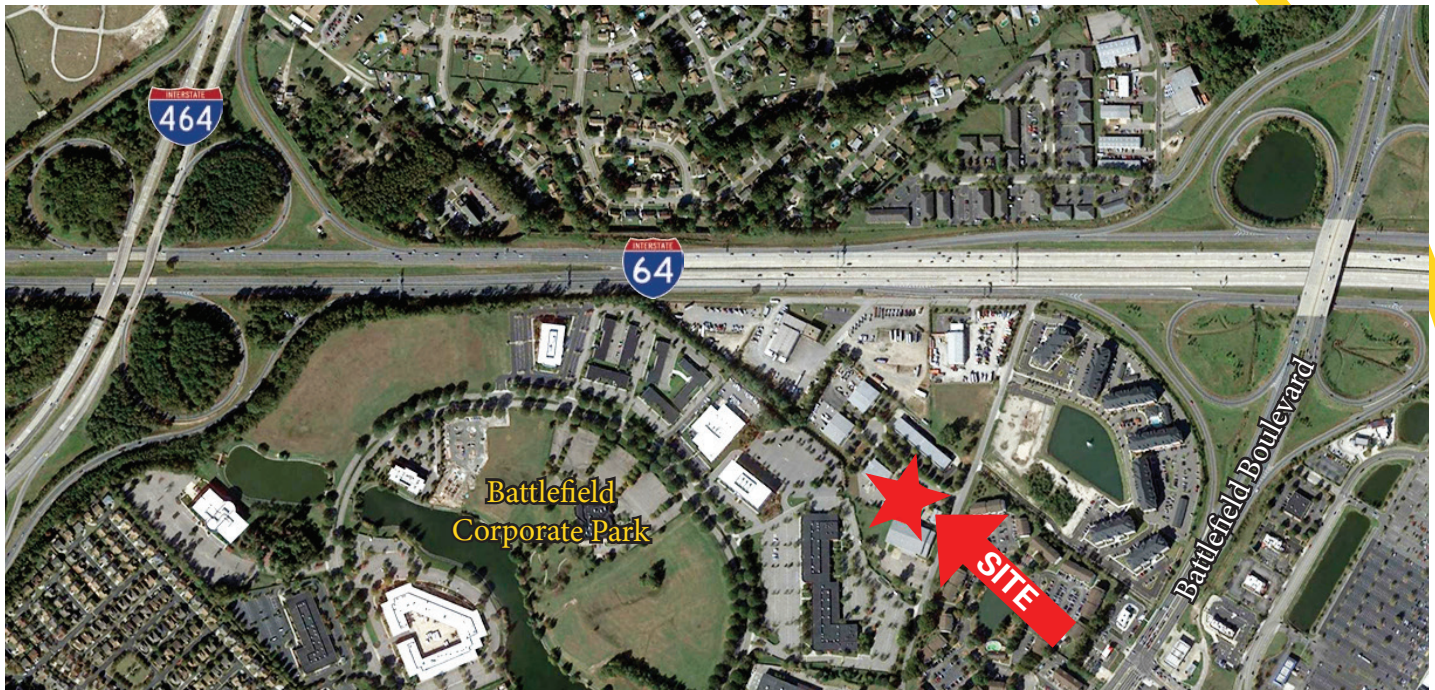
DON GOLDBERG
(757) 640-8212
dongoldberg@harveylindsay.com

HARVEY LINDSAY
COMMERCIAL REAL ESTATE

A Tradition of Forward Thinking

OFFICE SUITE FOR LEASE

205 Tintern Court
Chesapeake, VA 23320



CONTACT:
BOBBY BEASLEY, III
(757) 640-8241
bobbybeasley3@harveylindsay.com

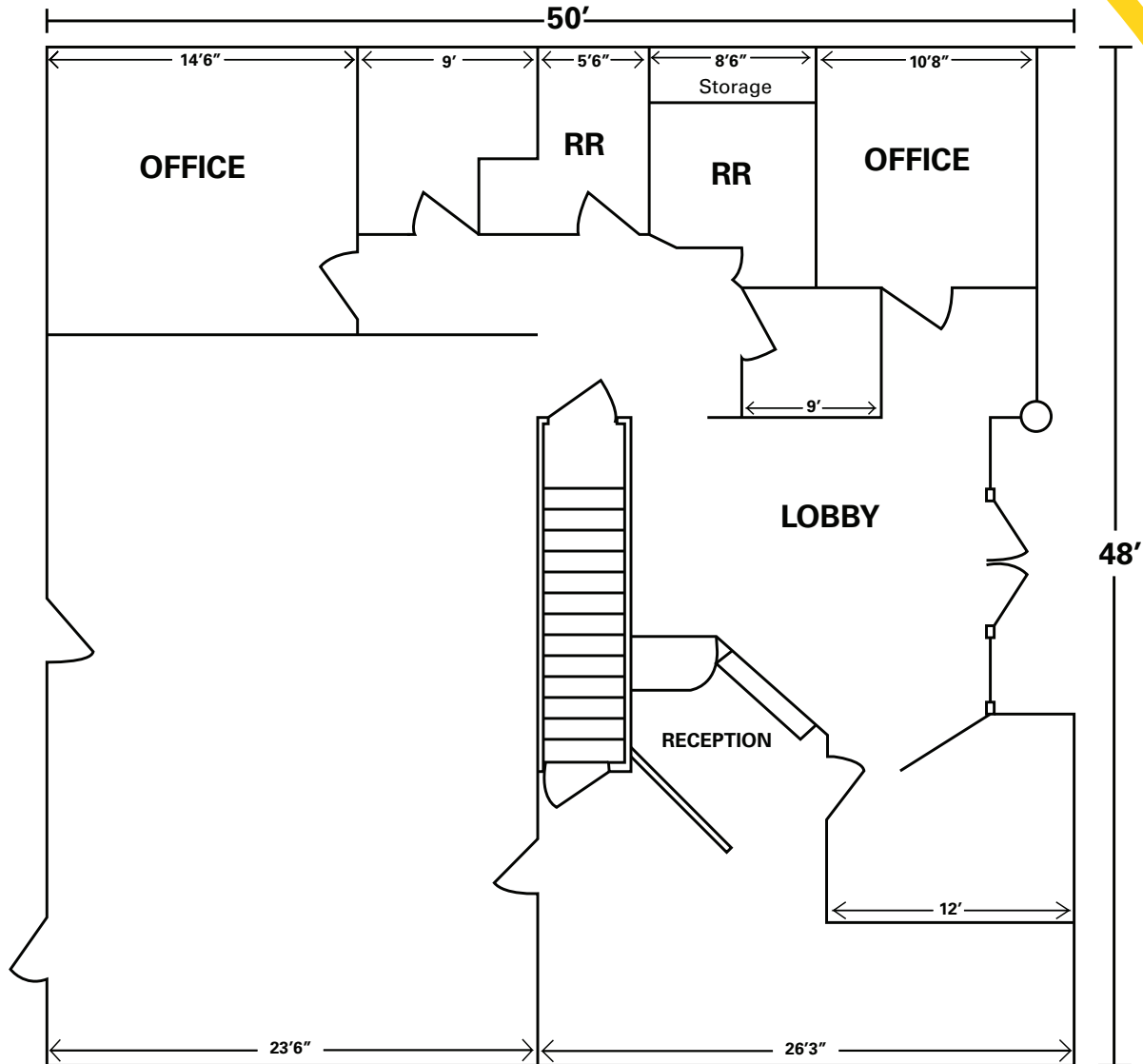
DON GOLDBERG
(757) 640-8212
dongoldberg@harveylindsay.com

HARVEY LINDSAY
COMMERCIAL REAL ESTATE
A Tradition of Forward Thinking

The information contained herein has been obtained from sources believed to be reliable but is not warranted.
We cannot be responsible for errors, omissions, withdrawal, or prior lease or sale.

OFFICE SUITE FOR LEASE

205 Tintern Court
Chesapeake, VA 23320



FLOOR PLAN

CONTACT:

BOBBY BEASLEY, III

(757) 640-8241

bobbybeasley3@harveylindsay.com

DON GOLDBERG

(757) 640-8212

dongoldberg@harveylindsay.com

HARVEY LINDSAY

COMMERCIAL REAL ESTATE

A Tradition of Forward Thinking

999 Waterside Drive ■ Suite 1400 ■ Norfolk, Virginia 23510 ■ 757.640.8700 ■ www.harveylindsay.com