

FOR LEASE

CORPORETUM OFFICE CAMPUS I & II
850-950 WARRENVILLE ROAD
LISLE, IL 60532



PROPERTY FEATURES:

- Beautifully landscaped office campus
- 2,600 SF to 12,000 SF available
- Full floor available in the 950 building
- Extensive window line throughout the suites
- Real estate taxes (2018): \$3.02/SF
- Operating expenses (2018): \$5.88/SF
- Lease rate: \$11.50/SF Net
- Visible from I-88, building signage opportunity
- Less than a half mile from the IL-53 on/off ramp to I-88

AVAILABLE SPACES

SPACE	LEASE RATE	SIZE (SF)
SUITE 100	Negotiable	2,600 SF
SUITE 200	\$11.50 SF/yr	7,535 SF
SUITE 250	Negotiable	7,200 SF
SUITE 300	Negotiable	12,000 SF

The information provided herein along with any attachment(s) was obtained from sources believed to be reliable, however, Friedman Real Estate makes no guarantees, warranties, or representations as to the completeness or accuracy of such information and legal counsel is advised. All information provided is subject to verification and no liability for reliance on such information or errors or omissions is assumed. The presentation of this property is submitted subject to errors, omissions, change of price or conditions, prior sale or lease, or withdrawal without notice. Copyright © 2018 Friedman Real Estate. All rights reserved.



FOR MORE INFORMATION PLEASE CONTACT:

KELLEN DUGGAN
kellen.duggan@freg.com

312.728.1700

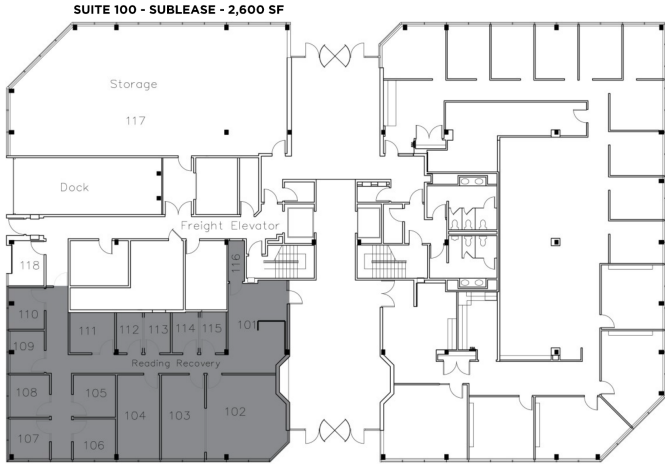
eCODE 931

FOR LEASE

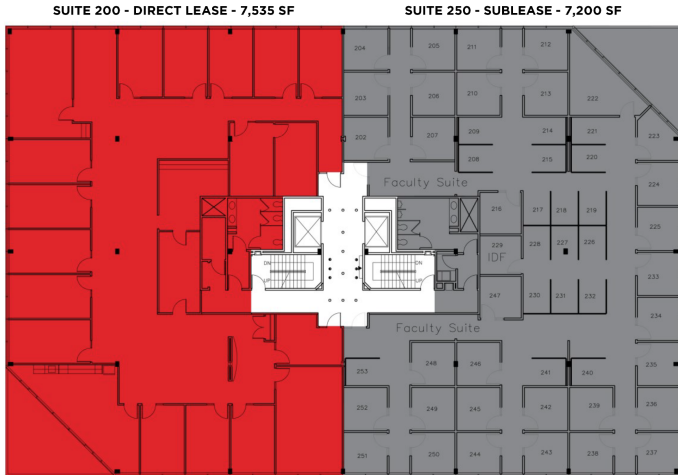
CORPORETUM OFFICE CAMPUS I & II
850-950 WARRENVILLE ROAD
LISLE, IL 60532



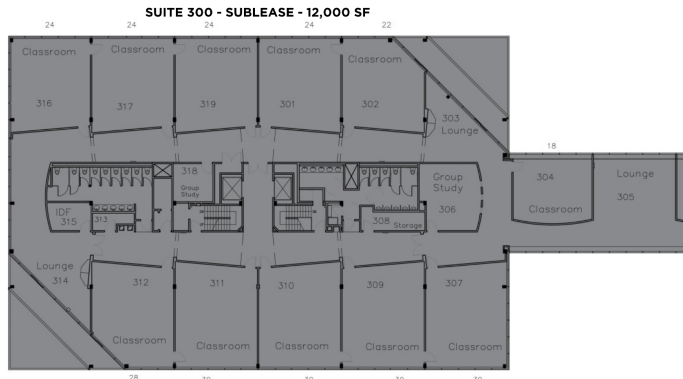
950 - 1ST FLOOR



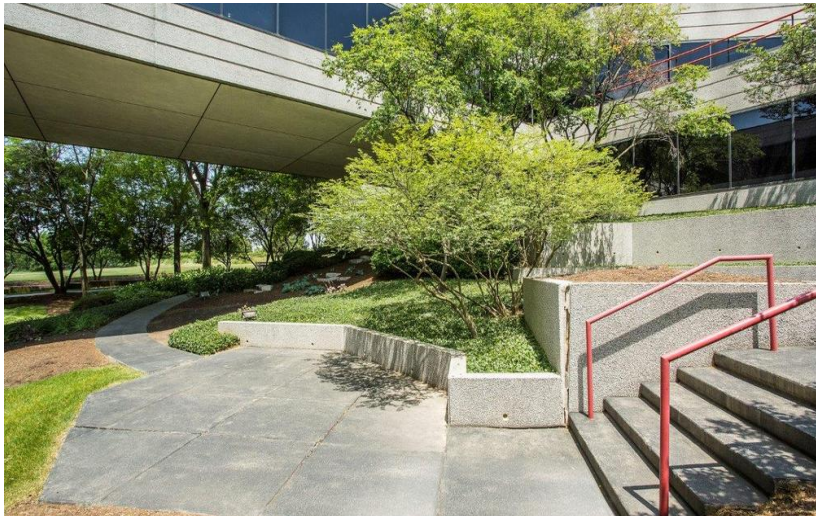
950 - 2ND FLOOR



950 - 3RD FLOOR



■ DIRECT LEASE ■ SUBLEASE



FOR MORE INFORMATION PLEASE CONTACT:

KELLEN DUGGAN kellen.duggan@freg.com

312.728.1700

eCODE 931