



N. 2ND ST.

27,300 VPD

N. 2ND ST.

N. HIGH ST.



2007 N. 2nd Street

Millville, NJ 08332

Property Description

- 2 land parcels: 0.92± acres - Lot 10/Block 233
0.65± acres - Lot 11/Block233
- Approx. 230 ft. of frontage on N. 2nd Street
- Easy access; left in, right in, right out
- Situated at traffic light
- Traffic counts: N. 2nd Street: 27,300± VPD
N. High St: 13,400± VPD
- 4,000± SF building on 1.57± acres
- Public water and sewer
- Zoning: General Business (B-4)
- Taxes (2017): \$12,684.40



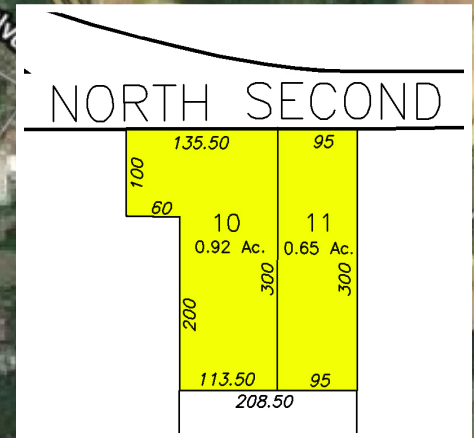
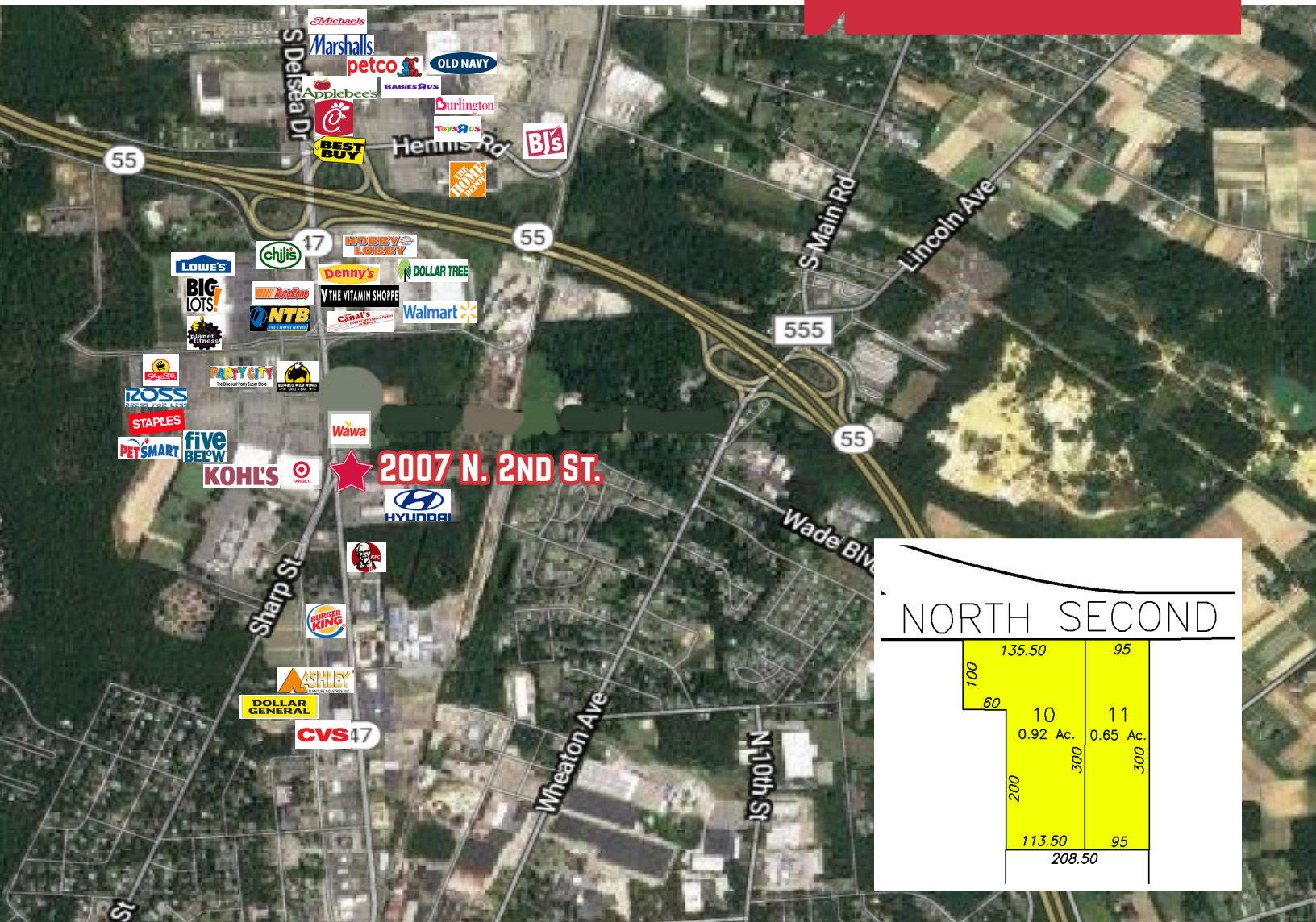
Demographics	1 Mile	3 Mile	5 Mile
Population	2,333	28,238	69,707
Total Housholds	935	10,630	25,109
Median HH Income	\$61,843	\$50,831	\$53,435

Asking Price:
\$1,500,000

For more information:

Jonathan Klear

+1 856 433 1801 • jonathan.klear@naimertz.com



Nearby Retailers Include:

- ShopRite
- Target
- Lowe's
- Walmart
- Hobby Lobby
- Home Depot
- Kohl's
- Five Below
- PetSmart
- Staples
- Ross
- Party City
- Ashley Furniture
- CVS
- Boscov's
- Ulta Beauty
- Big Lots
- Vitamin Shoppe
- NTB Tires
- Dollar Tree
- Babies R Us
- Burlington
- Toys R Us
- Best Buy
- Old Navy
- Petco
- Marshalls
- Michaels
- Hand and Stone
- Hyundai
- Canal's Liquors
- GameStop
- Pier One

Nearby Eating Establishments Include:

- Burger King
- KFC
- Wawa
- Shoprite
- Buffalo Wild Wings
- Denny's Restaurant
- Chili's Grill & Bar
- Chick-fil-A
- Moe's Southwest Grill
- Philly Pretzel Factory
- Longhorn Steakhouse
- Texas Roadhouse
- Taco Bell
- Arby's
- Red Robin
- Applebee's
- Red Lobster
- Starbucks
- Golden Corral

For more information:

Jonathan Klear

+1 856 433 1801 • jonathan.klear@naimertz.com

21 Roland Avenue
Mount Laurel, NJ 08054
+1 856 234 9600

naimertz.com