

## FOR LEASE

Loft Office / Flex Space  
4,200 - 7,348 RSF

# 1529 W. Armitage Ave - Lincoln Park

CHICAGO, IL 60642



For more information  
please contact:

David Schraufnagel  
(773) 880-1322 Ext. 16  
david@garrettrealtyinc.com

**Garrett Realty & Development, Inc.**  
2211 N. Elston Avenue, Ste. 308  
Chicago, Illinois 60614

[www.garrettrealtyinc.com](http://www.garrettrealtyinc.com)

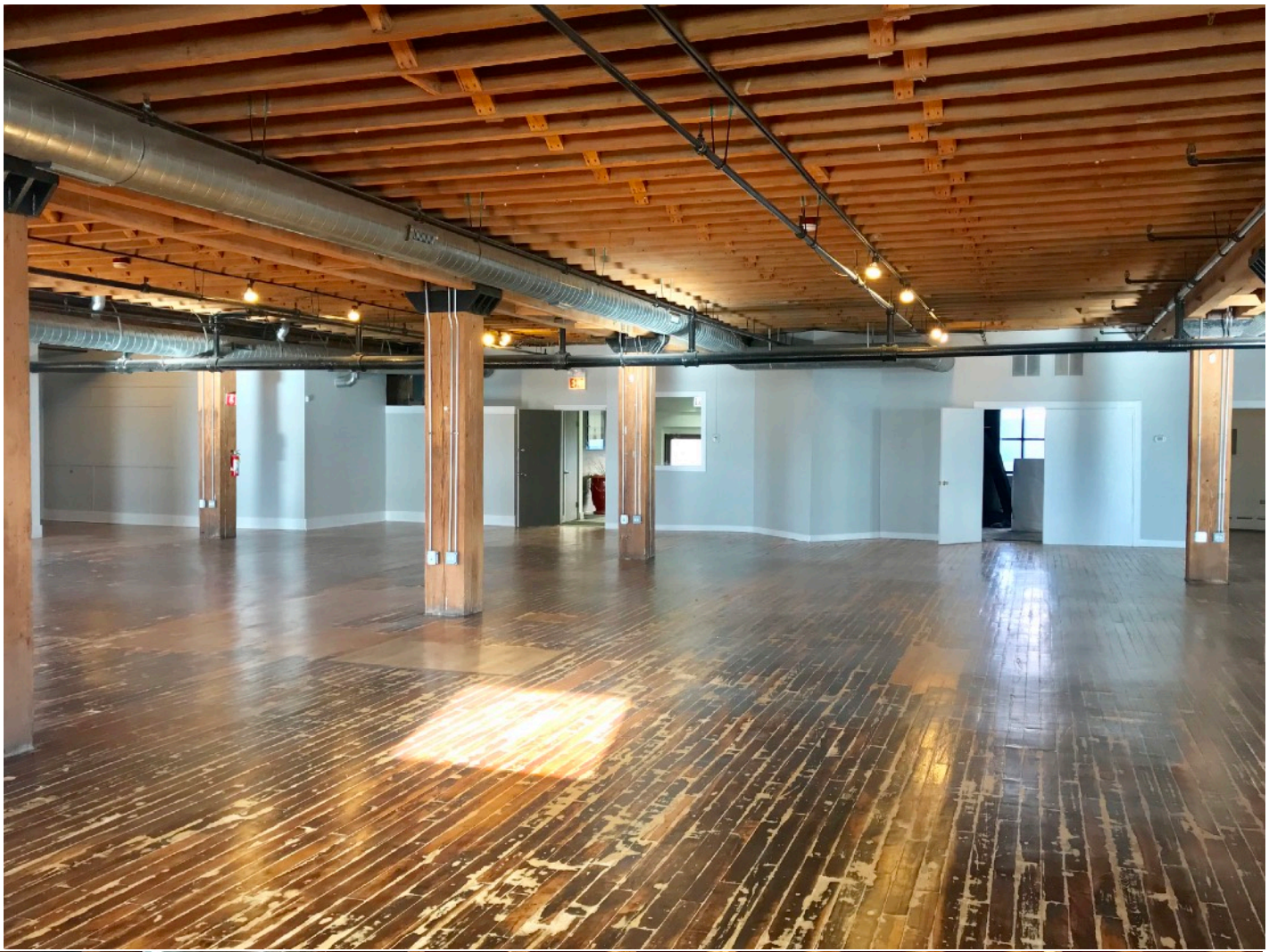
The information contained herein has been obtained from sources deemed reliable and is subject to errors, omissions, changes in price or terms and prior sale, lease or withdrawal from the market at any time without prior notice.

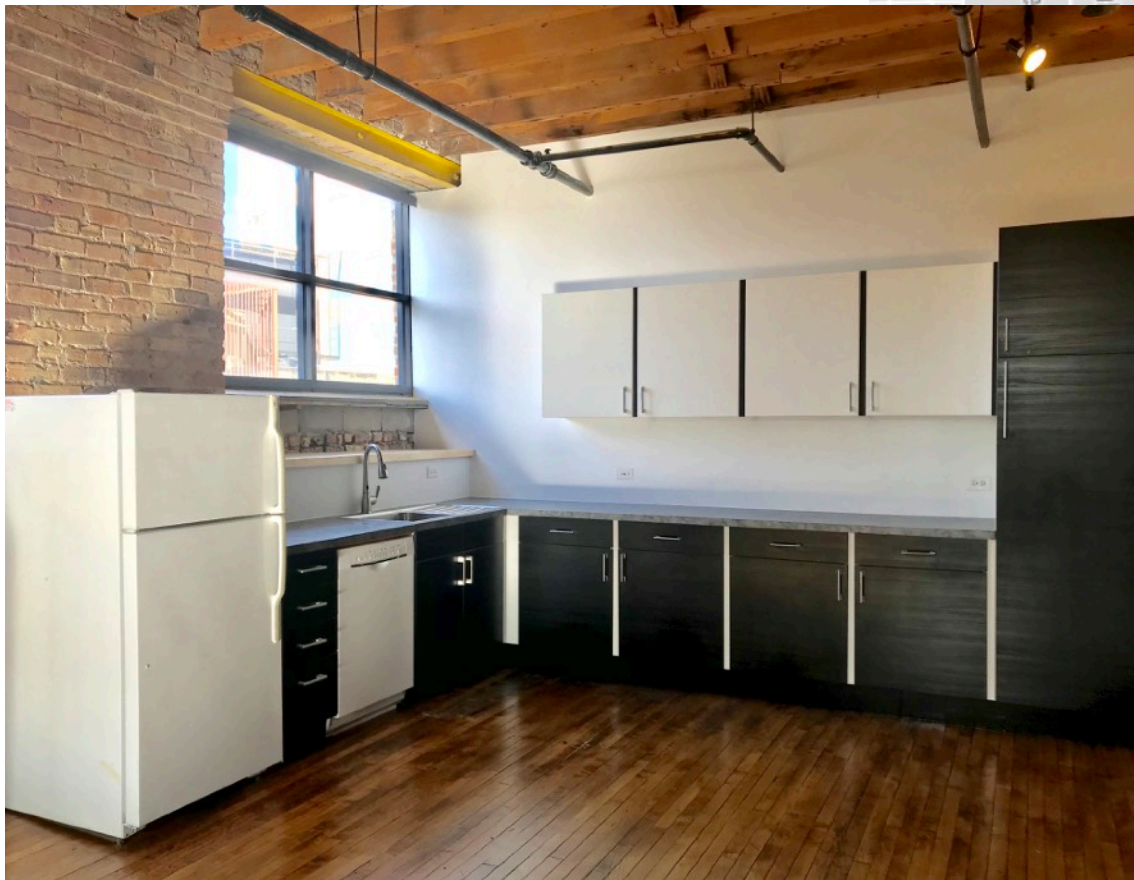
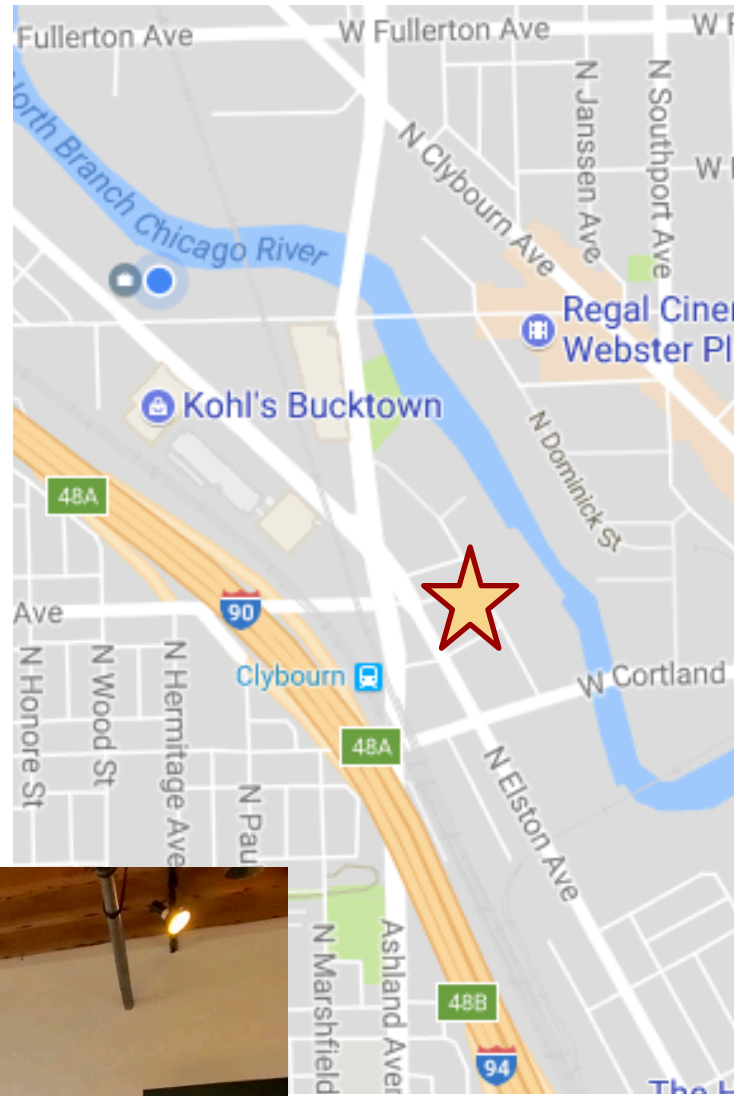
## HIGHLIGHTS

- Size:** Approximately 7,348 RSF (divisible to 4,200 RSF)
- Rate:** \$15.00-18.00 per RSF, Modified Gross
- Details:**
- Located in Chicago's Lincoln Park Neighborhood, just one block from Kennedy Expressway (90/94) And (Clybourn) Metra Stop.
  - 1st Floor Office / Flex Space
  - Timber beams, hardwood floors, exposed brick.
  - Open floor plan with 2 restrooms and new kitchenette
  - Available Immediately



**Garrett Realty**  
& DEVELOPMENT, INC.





*For more information  
please contact:*

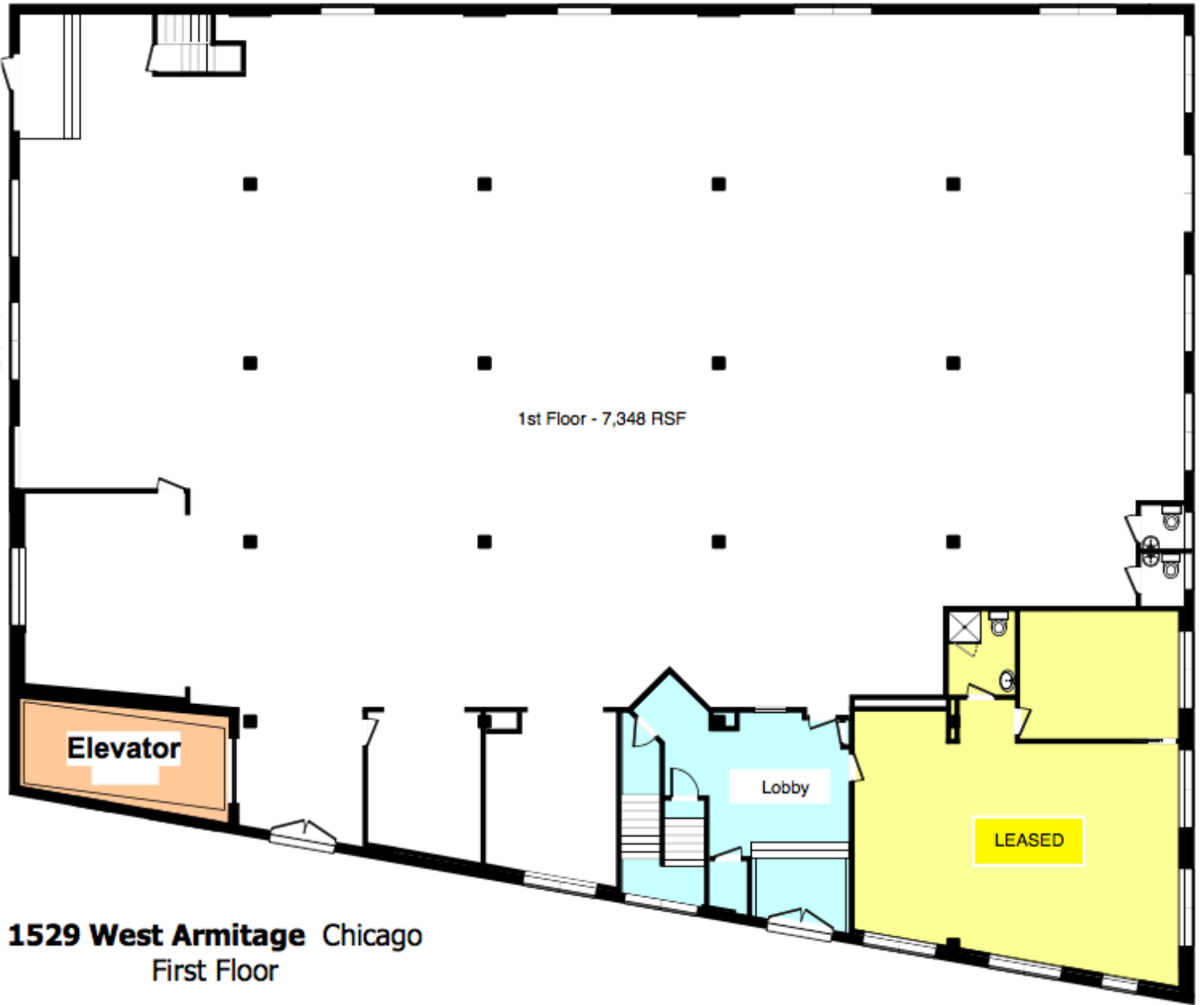
David Schraufnagel  
(773) 880-1322 Ext. 16  
david@garrettrealtyinc.com

**Garrett Realty & Development, Inc.**  
2211 N. Elston Avenue, Ste. 308  
Chicago, Illinois 60614

[www.garrettrealtyinc.com](http://www.garrettrealtyinc.com)

The information contained herein has been obtained from sources deemed reliable and is subject to errors, omissions, changes in price or terms and prior sale, lease or withdrawal from the market at any time without prior notice.

→W



1st Floor - 7,348 RSF

Elevator

Lobby

LEASED

**1529 West Armitage** Chicago  
First Floor