

20270-20276 Middlebelt – Livonia, Michigan



OFFICE / MEDICAL SPACE FOR LEASE

- Up to 1,332 SF Available
- Newly Renovated Common Areas
- Separately Controlled Heating & Cooling
- Professionally Managed
- Full Service Janitorial
- Abundant Parking
- Separately Metered Gas/Electric
- Exterior Signage

Woodwinds

OFFICE PARK

SUITE DETAILS:

Suite 2: 757 SF

Suite 7: 1,065 SF

Suite 8: 1,332 SF

Suite 9: 1,267 SF

Suite 9: 529 SF



For more information, please contact:

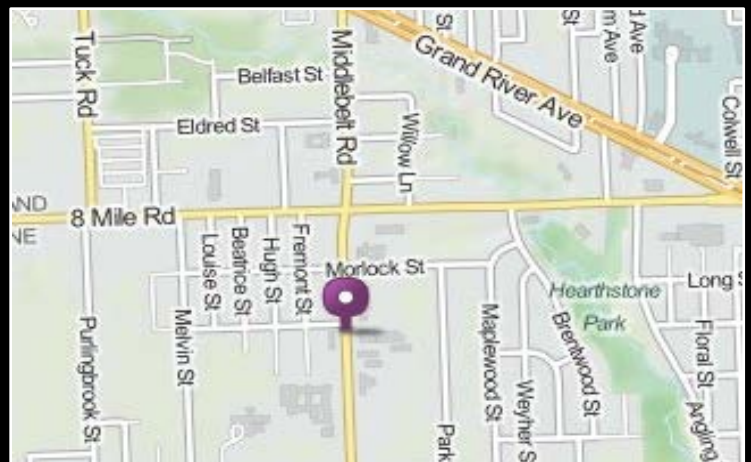
SCOTT MARCUS

Direct: 248.567.8020

Cell: 248.730.2227

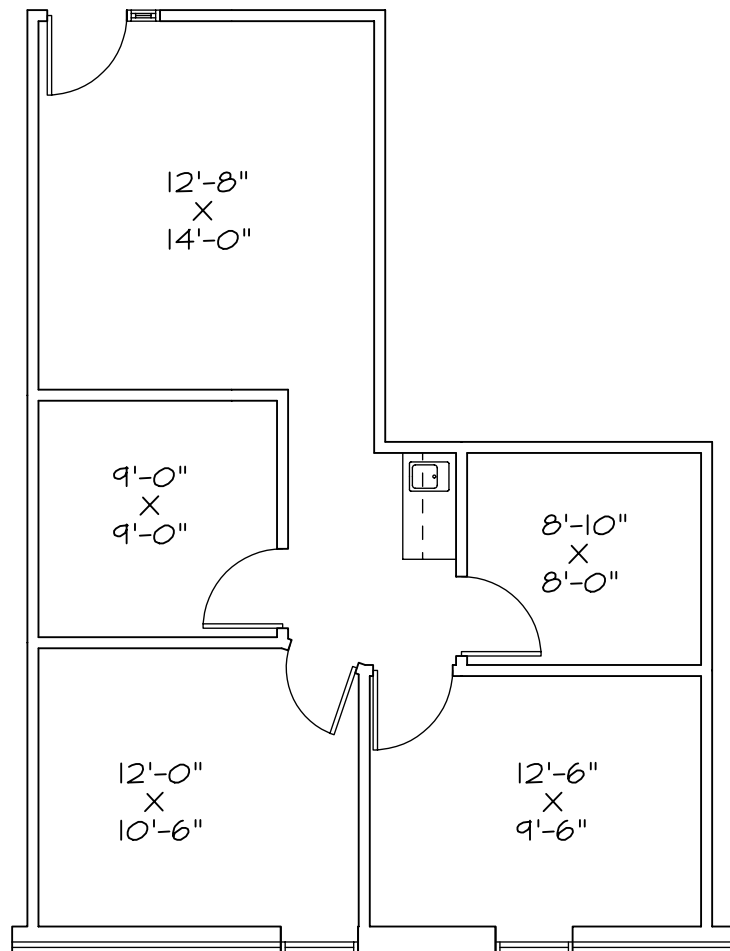
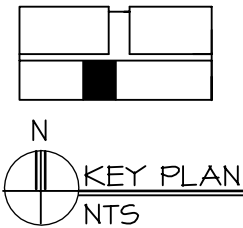
Marcus@RSMDevelopment.com

RSM DEVELOPMENT
& MANAGEMENT



WOODWINDS OFFICE PARK

20270 MIDDLEBELT
LIVONIA, MI



SUITE #2

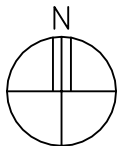
AREA: 757 RENTABLE SQ. FT.

FOR INFORMATION CALL:

SCOTT J. MARCUS
RSM DEVELOPMENT
(248) 645-2600

NOTE:

1. ALL DIMENSIONS ARE APPROX.
INTERIOR DIMENSIONS



SPACE AVAILABLE: SUITE #2

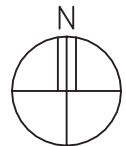
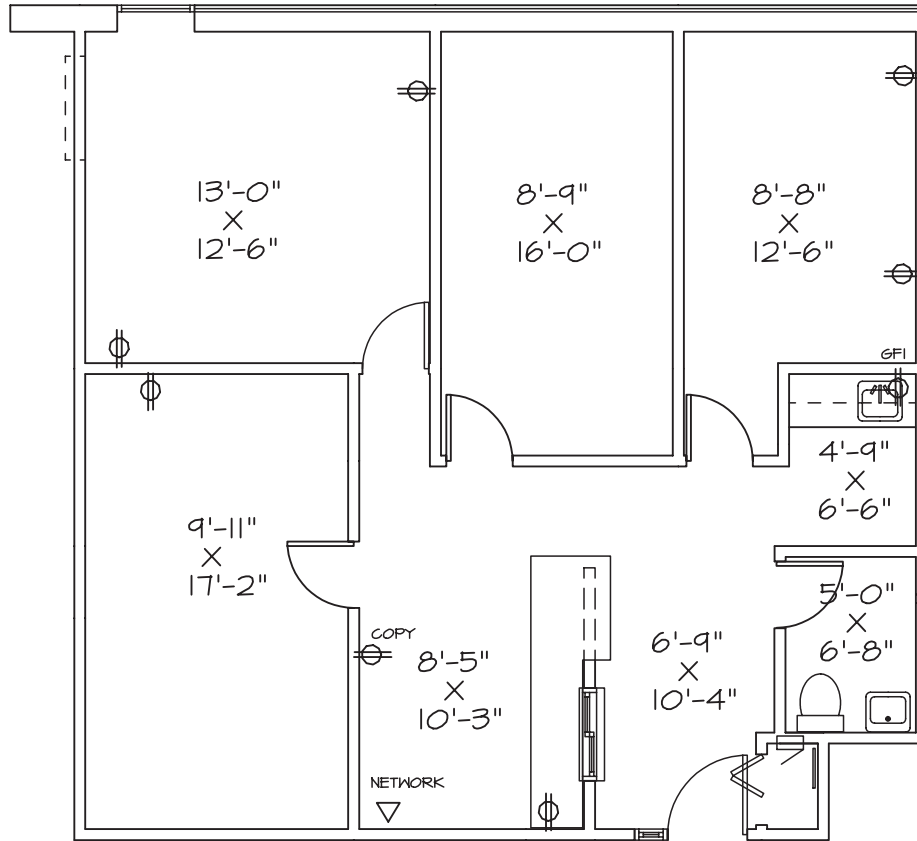
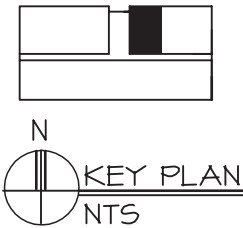
SCALE: 1/8" = 1'-0"



0' 2' 6' 12'

WOODWINDS OFFICE PARK

20270 MIDDLEBELT
LIVONIA, MI



AS-BUILT PLAN: SUITE #7

SCALE: 1/8" = 1'-0"



0' 2' 6' 12'

SUITE #7

AREA: 1,065 RENTABLE SQ. FT.

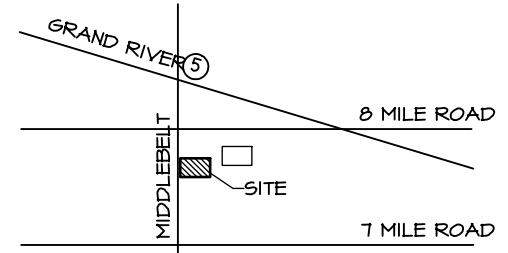
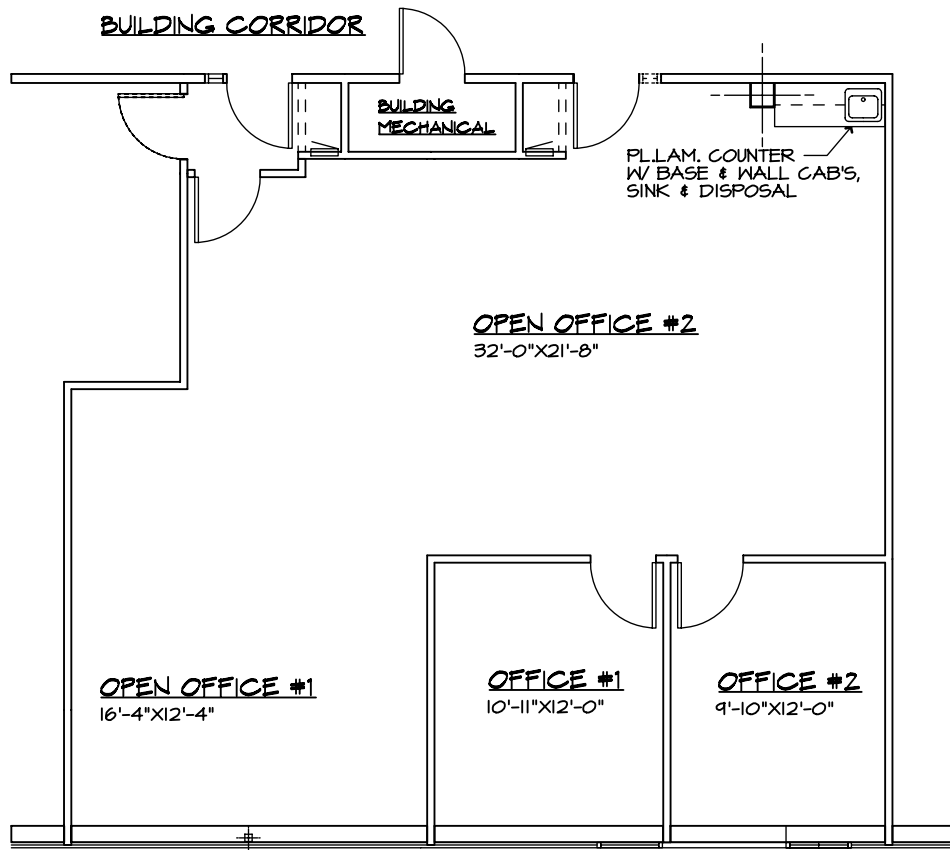
FOR INFORMATION CALL:

SCOTT J. MARCUS
RSM DEVELOPMENT
(248) 645-2600

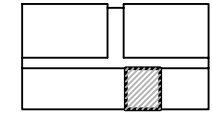
NOTE:

1. ALL DIMENSIONS ARE APPROX.
INTERIOR DIMENSIONS

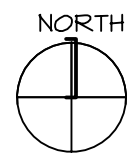
REV. 6/5/17



NORTH
LOCATION PLAN
N.T.S.

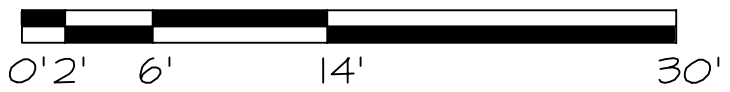


NORTH
KEY PLAN
N.T.S.



AS-BUILT PLAN FOR SUITE #8

SCALE: 1/8" = 1'-0"



WOODWINDS OFFICE PLAZA
20270 MIDDLEBELT RD.
LIVONIA, MICHIGAN

1,332 SQ. FT. (RENTABLE)

FOR INFORMATION CALL:

SCOTT J. MARCUS
RSM DEVELOPMENT
(248) 645-2600

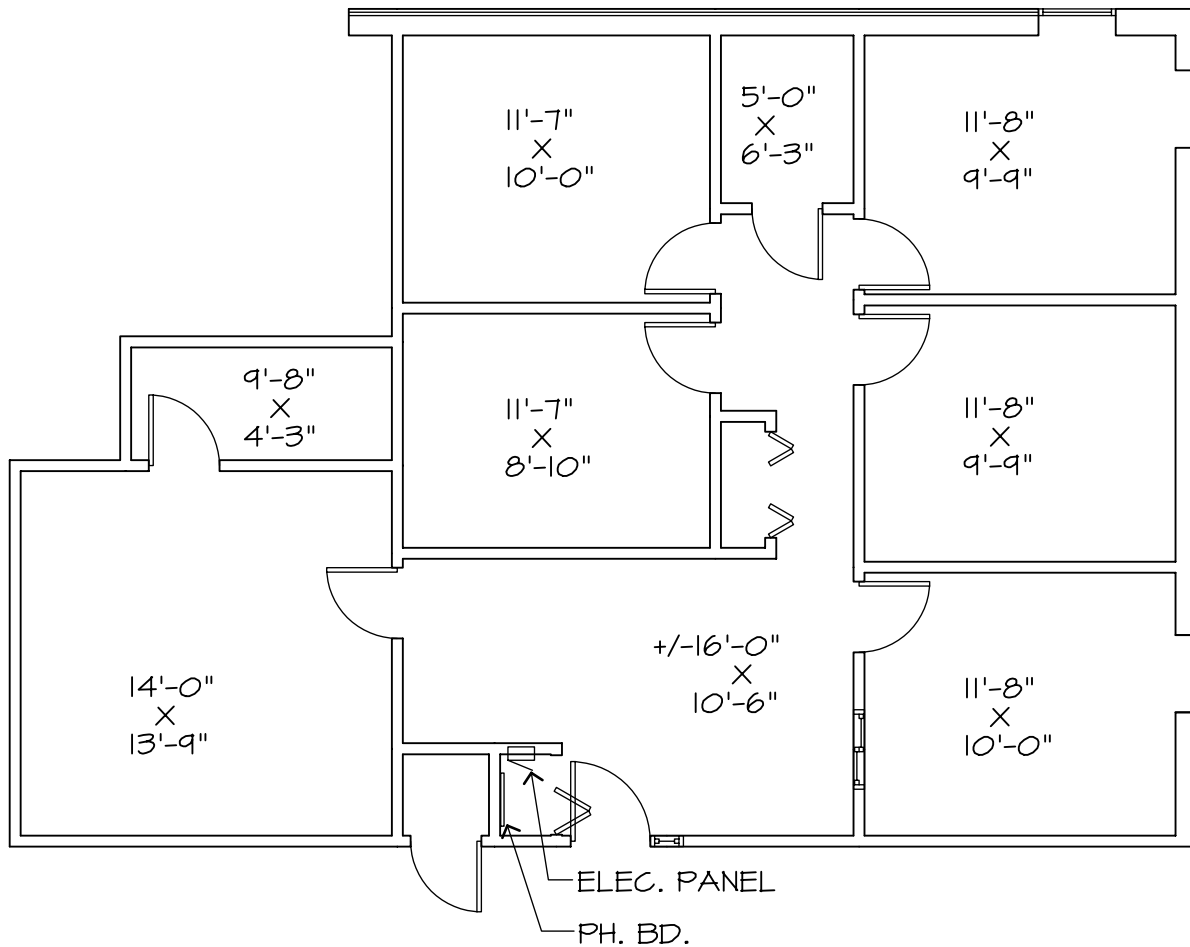
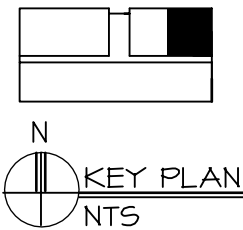
NOTE:

I. ALL DIMENSIONS ARE APPROX.
INTERIOR DIMENSIONS

	ARK-TEC L.L.C.
	ARCHITECTS
	100 GALLERIA OFFICENTRE SUITE 401, SOUTHFIELD, MI 48034 PH: 248-364-2000 FX: 248-351-3508
AS-BUILT	7/16/13

WOODWINDS OFFICE PARK

20270 MIDDLEBELT
LIVONIA, MI



SUITE #9

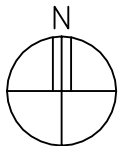
AREA: 1,267 RENTABLE SQ. FT.

FOR INFORMATION CALL:

SCOTT J. MARCUS
RSM DEVELOPMENT
(248) 645-2600

NOTE:

1. ALL DIMENSIONS ARE APPROX.
INTERIOR DIMENSIONS



SPACE AVAILABLE: SUITE #9

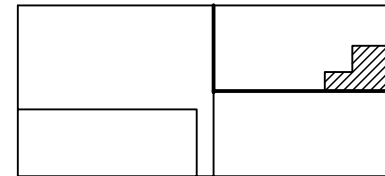
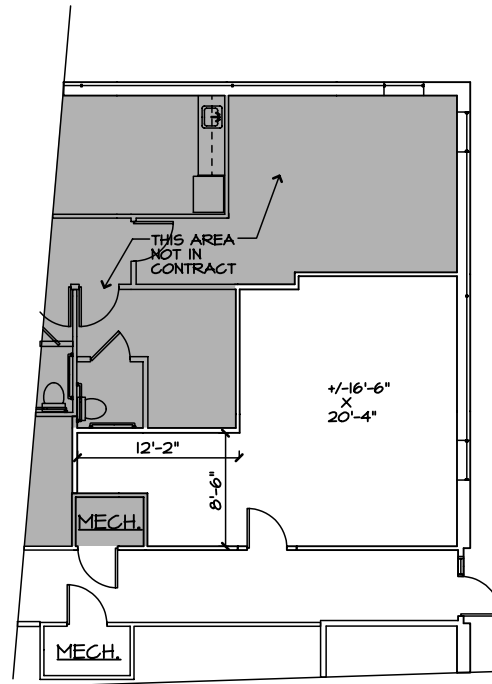
SCALE: 1/8" = 1'-0"



0' 2' 6' 12'

WOODWINDS OFFICE PARK

20276 MIDDLEBELT
LIVONIA, MI

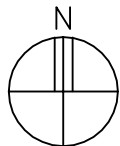


NOTE:

I. ALL DIMENSIONS ARE APPROX.
INTERIOR DIMENSIONS

FOR INFORMATION CALL:

SCOTT J. MARCUS
RSM DEVELOPMENT
(248) 645-2600



AS-BUILT FOR SUITE #9

N.T.S.

AREA: 529 RENTABLE SQ. FT.

AS-BUILT	
5/6/16	