

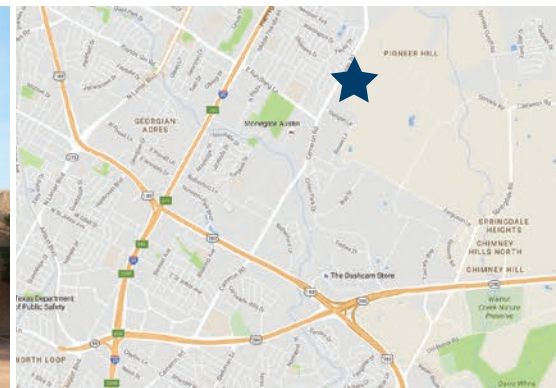


CAMERON BUSINESS PARK 9

9701 DESSAU ROAD - 78754



[CLICK HERE TO VIEW 360° PROPERTY AERIAL](#)



AVAILABLE SUITE

SUITE	SQ. FT.
905	5,333

Expandable to 10,668 RSF

SPACE FEATURES



50% Warehouse



50% Office



16' Clear Height



Cross-Dock Loading



1 Grade-Level Door (Front)



1 Dock High Door (Rear)



100% HVAC



DAVIS BASS

(512) 538-1030

bass@hpitx.com

MORRIS GREEN

(512) 538-0081

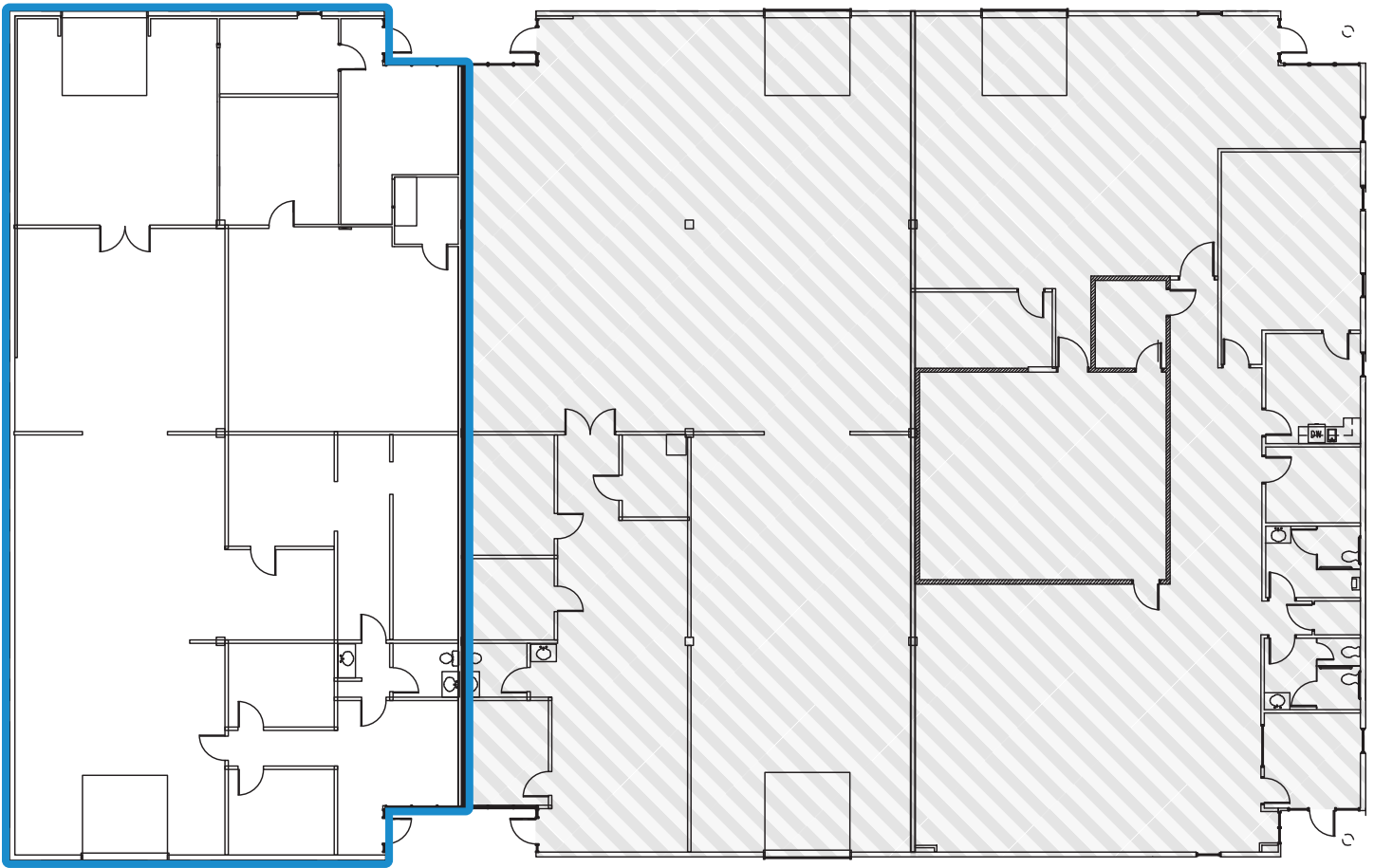
mgreen@hpitx.com



No warranty or representation, expressed or implied, is made as to the accuracy of the information contained herein, and same is submitted subject to errors, omissions, change of price, rental or other conditions, withdrawal without notice, and to any special listing conditions imposed by the principals.

CAMERON BUSINESS PARK 9

SUITE 905 - BUILDING PLAN

SUITE 905
5,333 RSF



 -- Available Space  -- Not Included



DAVIS BASS
(512) 538-1030
bass@hpitx.com

MORRIS GREEN
(512) 538-0081
mgreen@hpitx.com

No warranty or representation, expressed or implied, is made as to the accuracy of the information contained herein, and same is submitted subject to errors, omissions, change of price, rental or other conditions, withdrawal without notice, and to any special listing conditions imposed by the principals.

CAMERON BUSINESS PARK 9

SUITE 905 - SITE PLAN



DAVIS BASS

(512) 538-1030

bass@hpitx.com

MORRIS GREEN

(512) 538-0081

mgreen@hpitx.com

No warranty or representation, expressed or implied, is made as to the accuracy of the information contained herein, and same is submitted subject to errors, omissions, change of price, rental or other conditions, withdrawal without notice, and to any special listing conditions imposed by the principals.