

# CROW CANYON OFFICE PARK

Crow Canyon Court - San Ramon



## LISTING DATA

### AVAILABLE OFFICE SUITES:

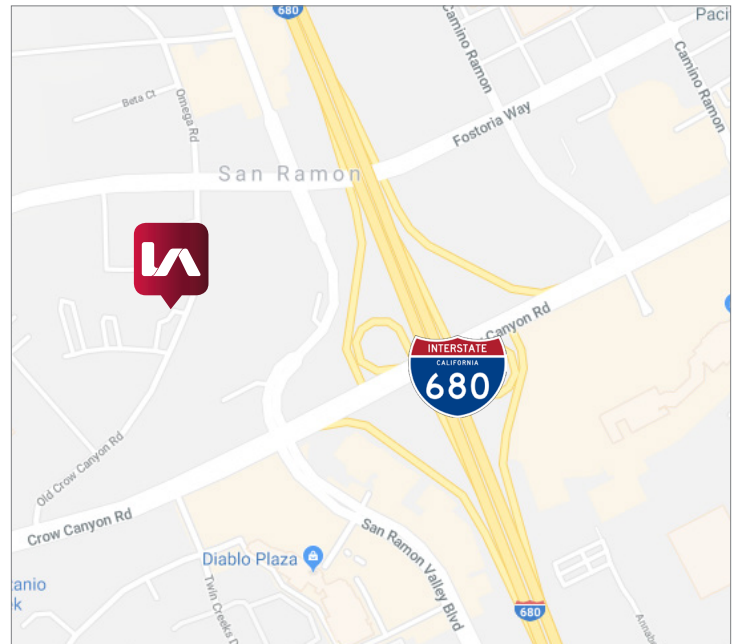
Building 1 Suite 200: 1,300±SF  
Suite 208: 675±SF  
Building 2 Suite 208: 749±SF

### COMMENTS:

- On site property management
- Abundant parking
- Short term leases available
- Located near I-680
- Professional and peaceful setting
- Proximity to retail amenities
- 6% procuring fee

## ECONOMIC DATA

LEASE RATE: Call Brokers for rates

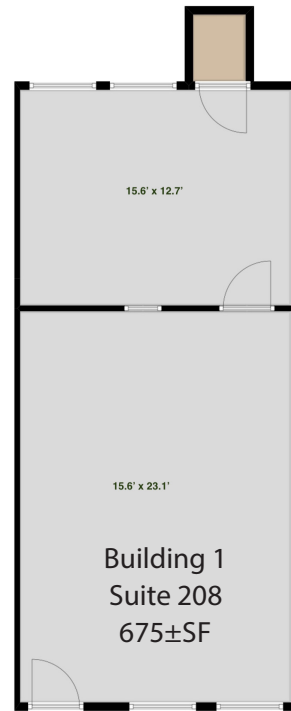
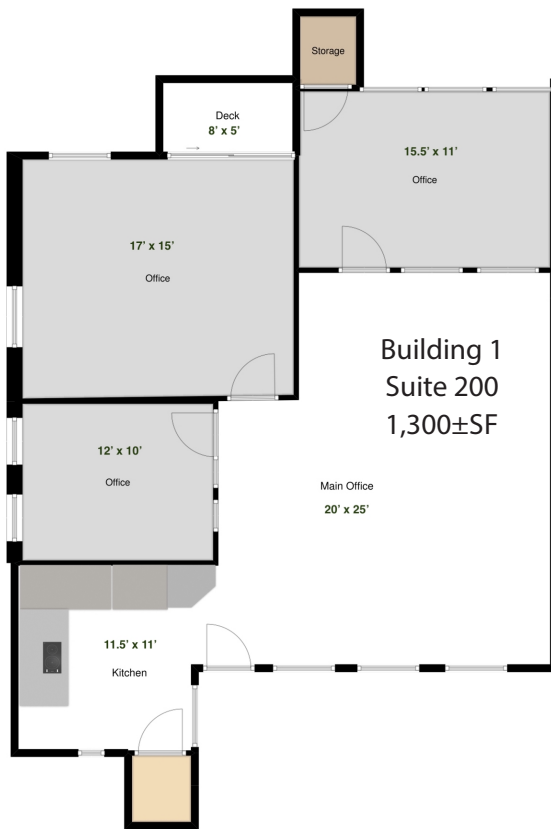


Will Ballowe  
wballowe@lee-associates.com  
D 925.737.4143  
LIC.ID#02053125

Simon Vogt  
svogt@lee-associates.com  
D 925.737.4157  
LIC.ID#01879314

All information furnished regarding property for sale, rental or financing is from sources deemed reliable, but no warranty or representation is made to the accuracy thereof and same is submitted to errors, omissions, change of price, rental or other conditions prior to sale, lease or financing or withdrawal without notice. No liability of any kind is to be imposed on the broker herein.

## FLOOR PLANS

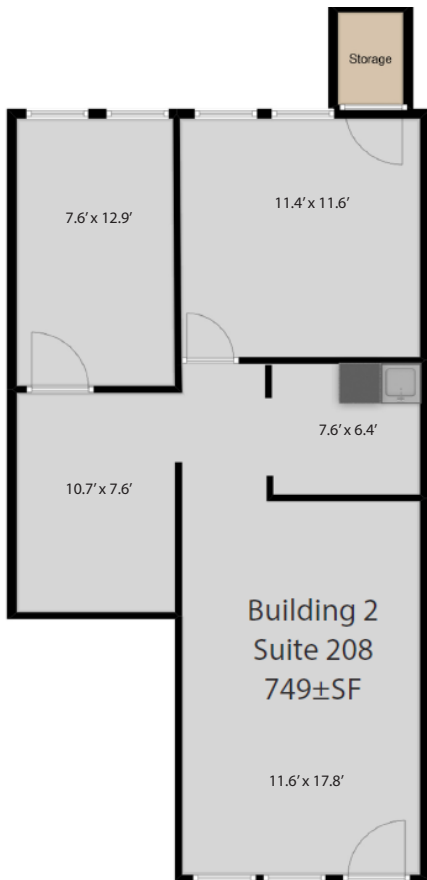


Will Ballowe  
wballowe@lee-associates.com  
D 925.737.4143  
LIC.ID#02053125

Simon Vogt  
svogt@lee-associates.com  
D 925.737.4157  
LIC.ID#01879314

All information furnished regarding property for sale, rental or financing is from sources deemed reliable, but no warranty or representation is made to the accuracy thereof and same is submitted to errors, omissions, change of price, rental or other conditions prior to sale, lease or financing or withdrawal without notice. No liability of any kind is to be imposed on the broker herein.

## FLOOR PLANS & PHOTOS



All information furnished regarding property for sale, rental or financing is from sources deemed reliable, but no warranty or representation is made to the accuracy thereof and same is submitted to errors, omissions, change of price, rental or other conditions prior to sale, lease or financing or withdrawal without notice. No liability of any kind is to be imposed on the broker herein.