

FOR LEASE

SOUTH PARK SHOP AND YARD

707

SOUTH RIVERSIDE DRIVE

Seattle, WA 98108



PROPERTY DETAILS

- + 15,440 SF Total
- + +/-12,440 SF Main Floor (2,200 SF Office)
- + +/- 3,000 SF Mezzanine Storage/Office
- + Rate: \$1.00-\$1.10/SF NNN
- + 21,203 SF Land plus adjacent 4,000 SF yard available at \$0.25/SF
- + 5 ton O.H. bridge crane (30' Span)
 - Configured for multiple jib cranes
- + 600 amp 3 phase electrical service
- + New roof - 2013
- + Drive-in loading (4)
 - 12' w x 14' h
 - 9' w x 10' h
 - 9' w x 8' h
 - 11' w x 14' h
- + Easy access to Highway 99, 509 and I-5
- + Zoning: 1G1 U/65, City of Seattle

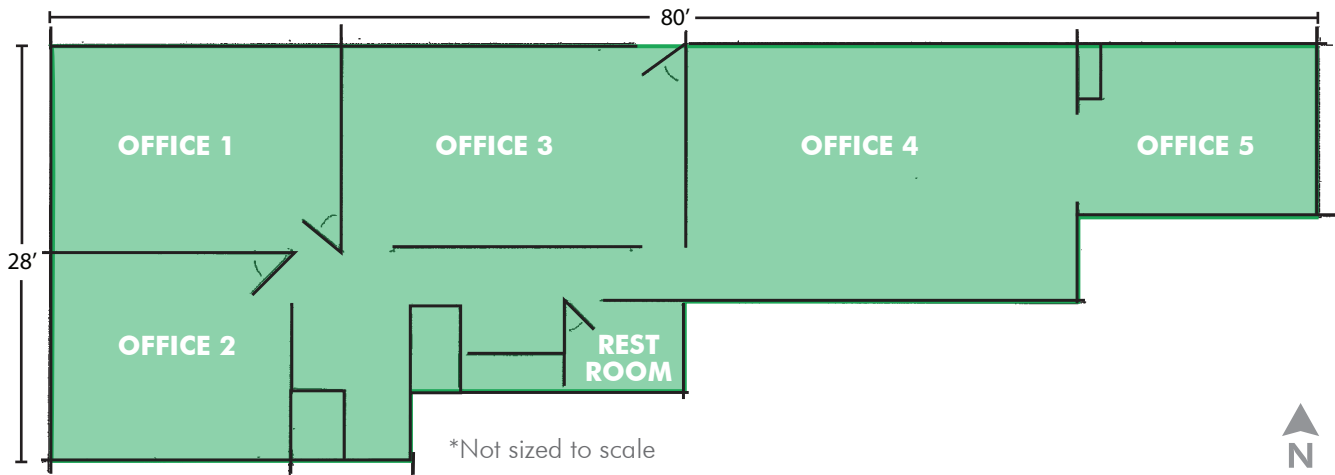


FOR LEASE SOUTH PARK SHOP AND YARD

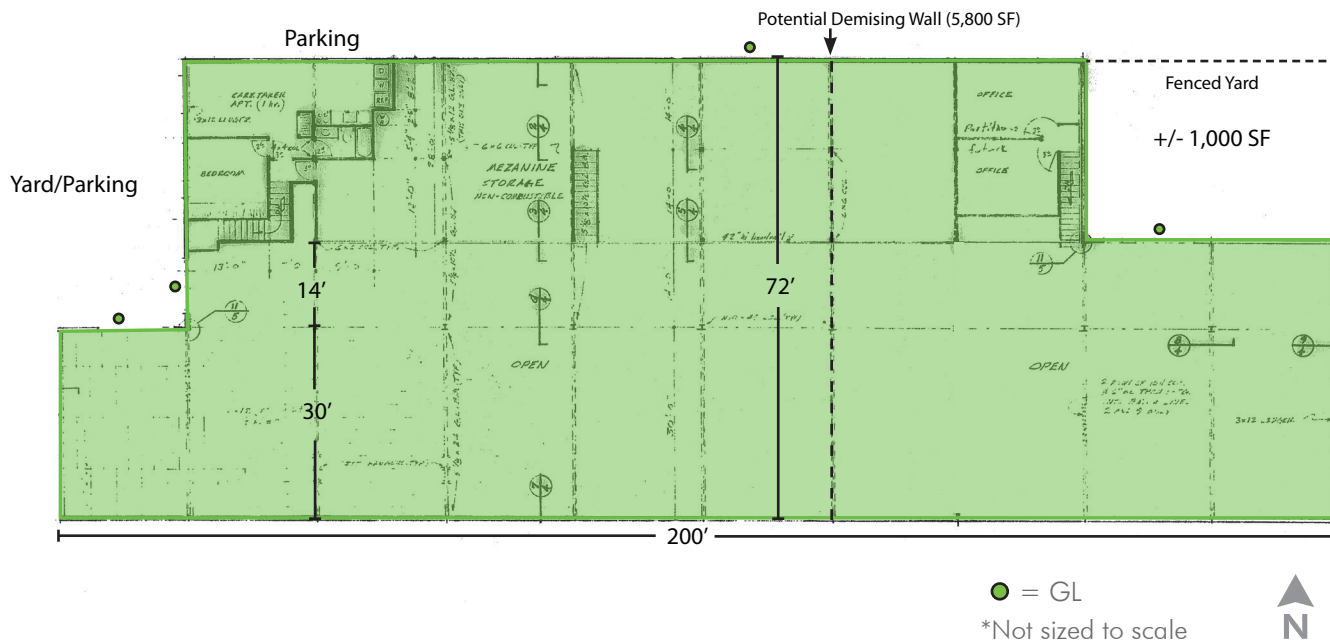


FLOOR PLANS

Main Office Floor Plan



Building Floor Plan - 15,440 Total SF





PROPERTY PHOTOS



