

the

# EMBASSY

portfolio



## 4040 EMBASSY PARKWAY

This building offers options for the mid-sized tenant. A building conference room, lower level storage and grand atrium offers main floor collaborative space with a kitchen and auditorium available to tenants

- *Auditorium*
- *Vending area*
- *Conference room*

### AVAILABILITIES

*Suite 250 - 1,122 RSF • Suite 270 - 3,449 RSF • Suite 350 - 3,473 RSF*



[WWW.CBRE.US/EMBASSYPORTFOLIO](http://WWW.CBRE.US/EMBASSYPORTFOLIO)

FOR MORE  
INFORMATION,  
PLEASE CONTACT:

*susan lines*  
+1 330 670 4411  
[susan.lines@cbre.com](mailto:susan.lines@cbre.com)

*gary rickel*  
+1 330 670 4414  
[gary.rickel@cbre.com](mailto:gary.rickel@cbre.com)

*zada brenner*  
+1 330 670 4418  
[zada.brenner@cbre.com](mailto:zada.brenner@cbre.com)

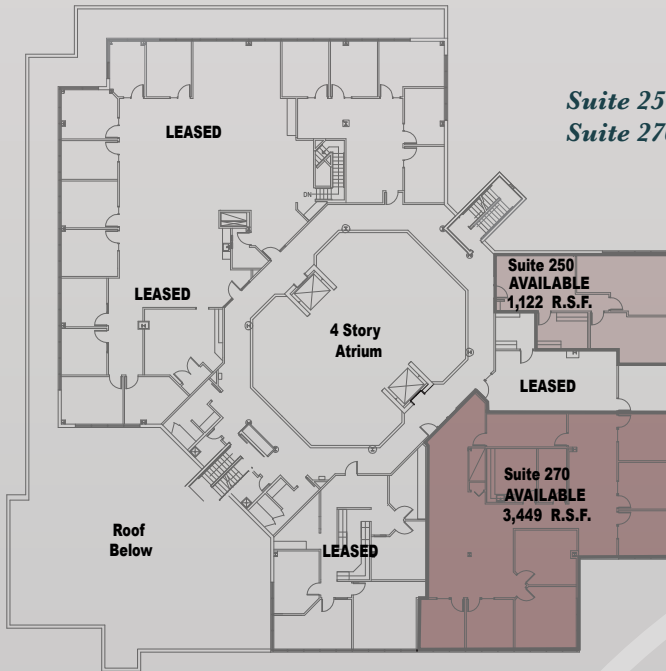
**CBRE**

the  
**EMBASSY**  
portfolio



**Rental Rate: \$18.50 per RSF**

- Rates include parking, in-suite cleaning, water, sewer, and gas.
- Tenant pays in-suite electric and pro-rata share of common area electric.



**4040 Embassy Parkway, Akron, Ohio 44333**

FOR MORE  
INFORMATION,  
PLEASE CONTACT:

**susan lines**  
+1 330 670 4411  
susan.lines@cbre.com

**gary rickel**  
+1 330 670 4414  
gary.rickel@cbre.com

**zada brenner**  
+1 330 670 4418  
zada.brenner@cbre.com

© 2019 CBRE, Inc. All rights reserved. This information has been obtained from sources believed reliable, but has not been verified for accuracy or completeness. Any projections, opinions, or estimates are subject to uncertainty. The information may not represent the current or future performance of the property. You and your advisors should conduct a careful, independent investigation of the property and verify all information. Any reliance on this information is solely at your own risk. CBRE and the CBRE logo are service marks of CBRE, Inc. and/or its affiliated or related companies in the United States and other countries. All other marks displayed on this document are the property of their respective owners. Photos herein are the property of their respective owners and use of these images without the express written consent of the owner is prohibited.

**CBRE**