



FOR SUBLEASE

2900 WEST OLYMPIC BLVD.

SUITE 250
SANTA MONICA, CA

SIZE: 7,394 RSF
TERM: Through October 15, 2020
RATE: Negotiable

PROPERTY HIGHLIGHTS

- » Creative office with high-end finishes.
- » Concrete floors with lots of glass and windows.
- » Open plan with large conference room and five private offices.
- » One oversized private office with private bathroom.
- » Located in the heart of Santa Monica's Media District.

ARLENE SOMMER
+1 310 595 2220
arlene.sommer@cushwake.com
CA Lic. #00616335

KAI LAUREN KOLODZIEJSKI
+1 310 595 2214
kai.kolodziejski@cushwake.com
CA Lic. #01949482

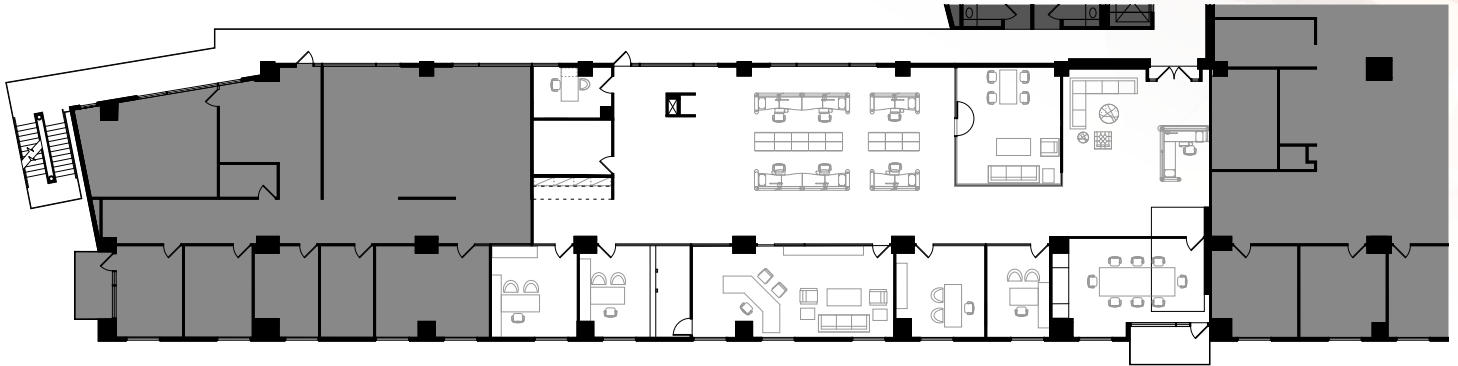
10250 Constellation Blvd., Suite 2200
Los Angeles, CA
+1 310 556 1805
cushmanwakefield.com

FOR SUBLEASE

2900 WEST OLYMPIC BLVD.



FLOOR PLAN



ARLENE SOMMER

+1 310 595 2220
arlene.sommer@cushwake.com
CA Lic. #00616335

KAI LAUREN KOLODZIEJSKI

+1 310 595 2214
kai.kolodziejski@cushwake.com
CA Lic. #01949482

10250 Constellation Blvd., Suite 2200
Los Angeles, CA
+1 310 556 1805

cushmanwakefield.com