

Lightway Plaza

402 East 26th Street, Tacoma, WA



FOR LEASE

Professional Office near Downtown Tacoma
2017 renovations

Benjamin A. Norbe
253.722.1410
bnorbe@kiddermathews.com

kiddermathews.com

km Kidder
Mathews

Lightway Plaza

402 East 26th Street, Tacoma, WA

Professional Office/Retail Space

AVAILABLE	Suite 1A 1,287 SF Suite 1B 927 SF Suite 1C 1,160 SF	Suite 3A 2,965 RSF Suite 3B 2,478 RSF Total: 5,443 RSF
RATE	\$18.00 PSF, per year, NNN	
PARKING	On site covered parking available	
RENOVATIONS	2017 renovations/2004 construction	
LOCATION	Easy access to I-5, I-705 and SR 509 and near Tacoma Dome Station which serves Tacoma Link, Sounder Train and Sound Transit Express and Pierce Transit	
SURROUNDING AREA	Metro bus line, Link Light Rail stop and new Amtrak Station near the building Short distance to YMCA, Tacoma Convention Center, University of Washington Tacoma, various restaurants and retail shops	



Availabilities

SUITE 1A	SUITE 1B	SUITE 1C	SUITE 3A	SUITE 3B
1,287 SF	927 SF	1,160 SF	2,965 RSF	2,478 RSF

Benjamin A. Norbe
253.722.1410
bnorbe@kiddermathews.com

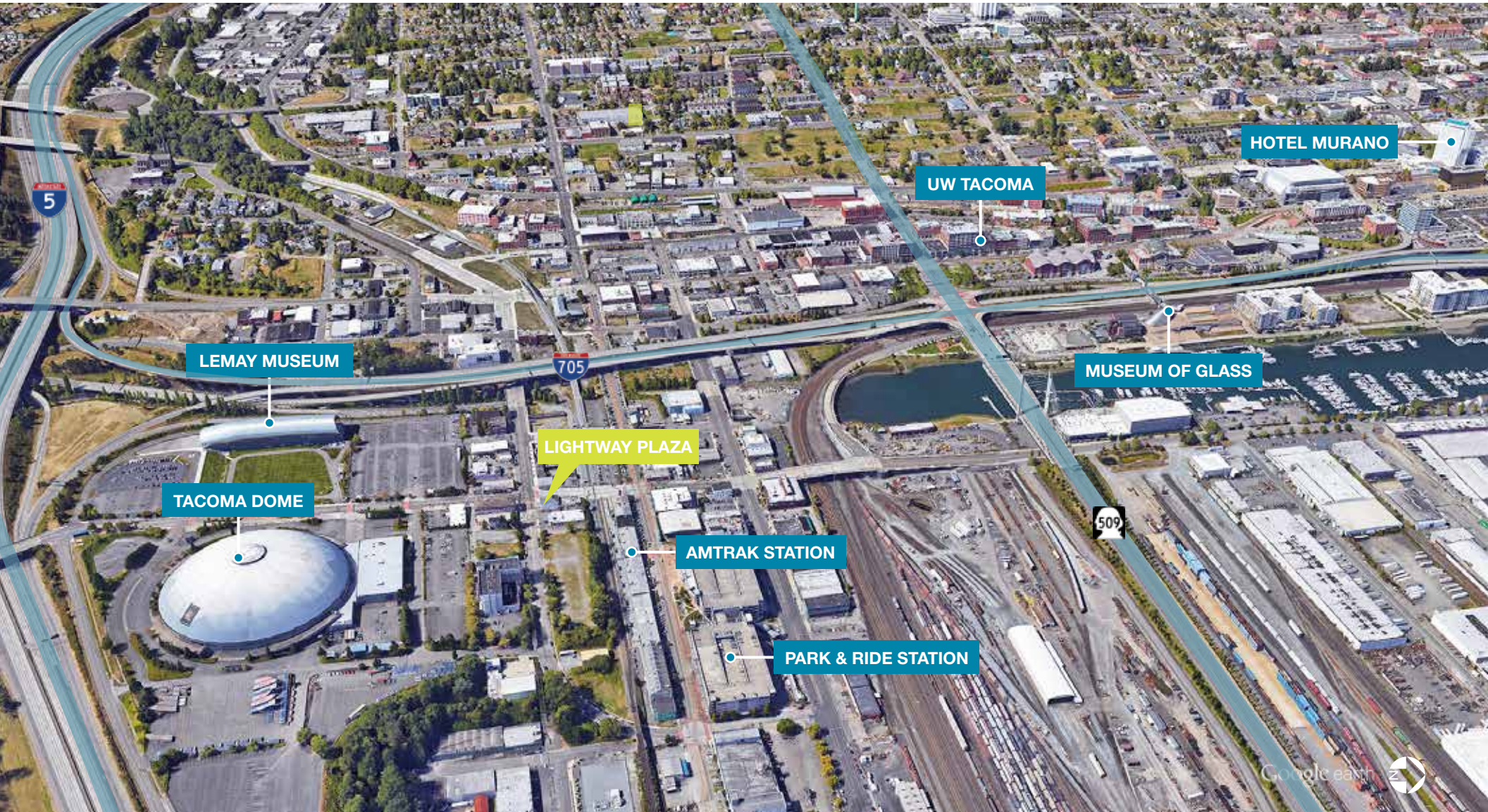
kiddermathews.com



This information supplied herein is from sources we deem reliable. It is provided without any representation, warranty or guarantee, expressed or implied as to its accuracy. Prospective Buyer or Tenant should conduct an independent investigation and verification of all matters deemed to be material, including, but not limited to, statements of income and expenses. Consult your attorney, accountant, or other professional advisor.

Lightway Plaza

402 East 26th Street, Tacoma, WA



Benjamin A. Norbe
253.722.1410
bnorbe@kiddermathews.com

kiddermathews.com

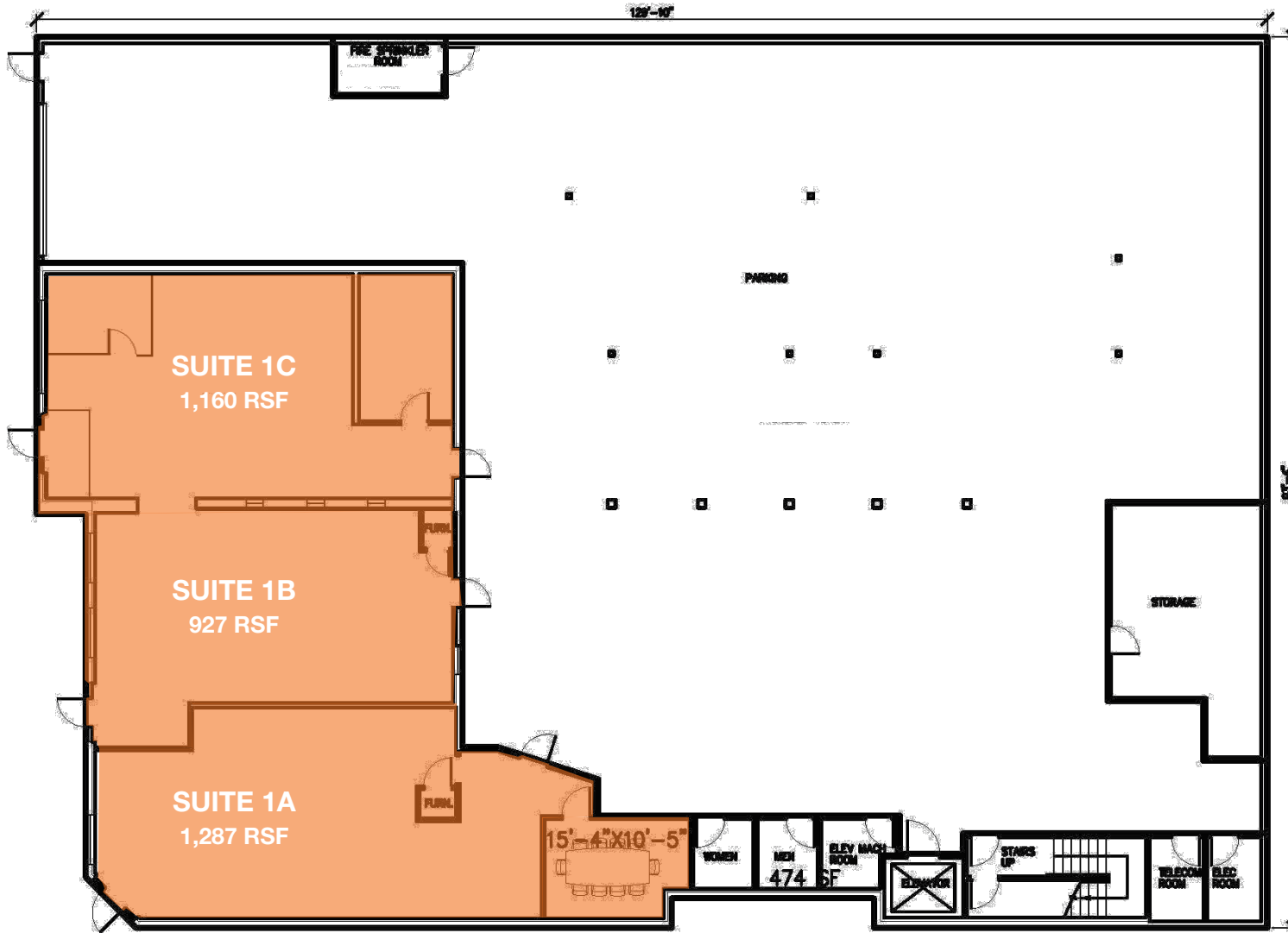


This information supplied herein is from sources we deem reliable. It is provided without any representation, warranty or guarantee, expressed or implied as to its accuracy. Prospective Buyer or Tenant should conduct an independent investigation and verification of all matters deemed to be material, including, but not limited to, statements of income and expenses. Consult your attorney, accountant, or other professional advisor.

Lightway Plaza

402 East 26th Street, Tacoma, WA

Level 1



Benjamin A. Norbe
253.722.1410
bnorbe@kiddermathews.com

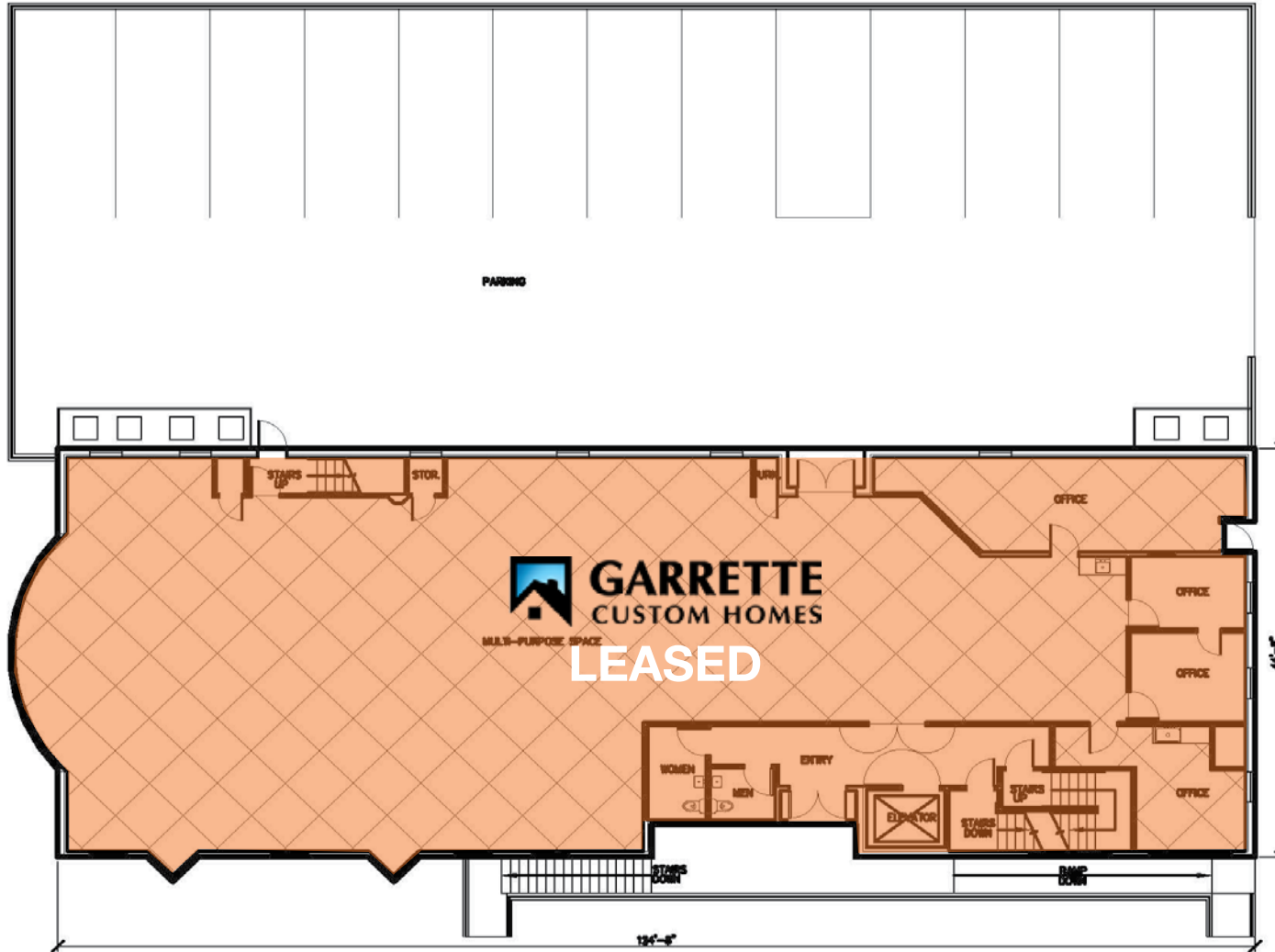
kiddermathews.com



Lightway Plaza

402 East 26th Street, Tacoma, WA

Level 2



Benjamin A. Norbe

253.722.1410

bnorbe@kiddermathews.com

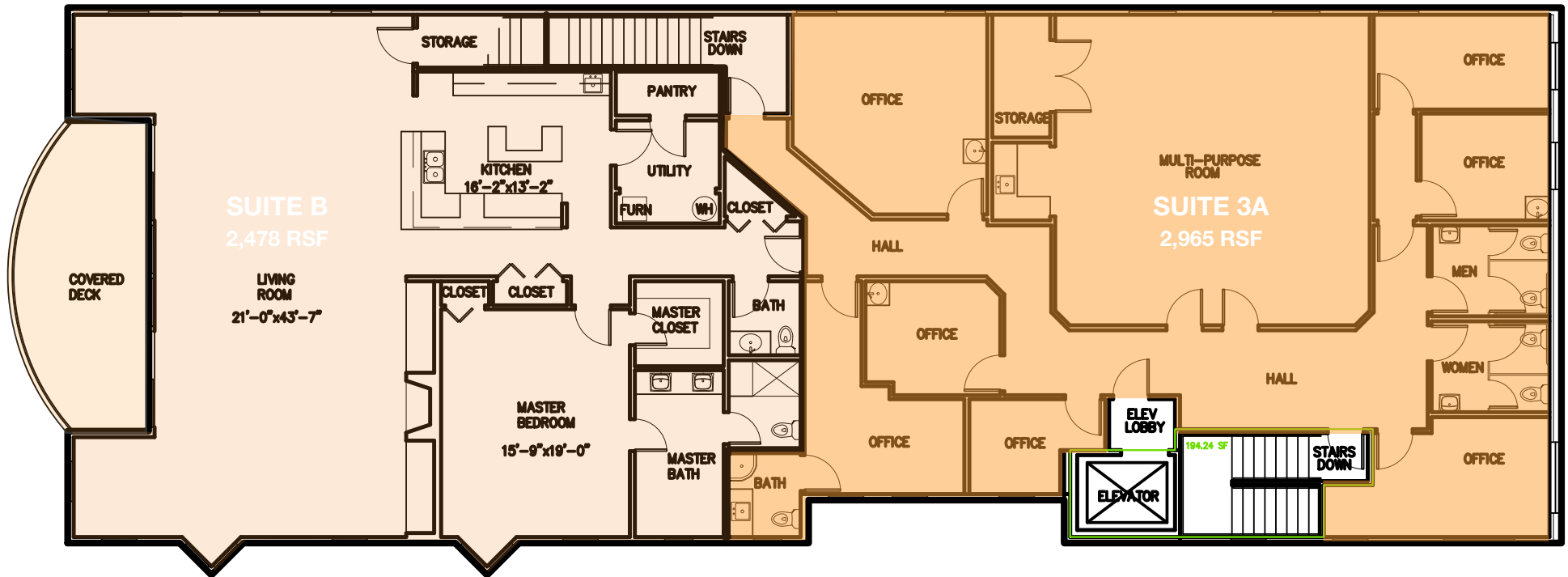
kiddermathews.com



Lightway Plaza

402 East 26th Street, Tacoma, WA

Level 3



Benjamin A. Norbe
253.722.1410
bnorbe@kiddermathews.com

kiddermathews.com



Lightway Plaza

402 East 26th Street, Tacoma, WA



Benjamin A. Norbe
253.722.1410
bnorbe@kiddermathews.com

kiddermathews.com



This information supplied herein is from sources we deem reliable. It is provided without any representation, warranty or guarantee, expressed or implied as to its accuracy. Prospective Buyer or Tenant should conduct an independent investigation and verification of all matters deemed to be material, including, but not limited to, statements of income and expenses. Consult your attorney, accountant, or other professional advisor.