

~ FOR LEASE ~

OFFICE SPACE



TOWER REALTY CORP.



**6 Trowbridge Drive, Unit 2B
Bethel, CT**

Lease Price: \$7.50 NNN Price Reduced

Clean and bright office space with many windows and great parking. Ideal for any professional office or lab space. NNN = +/- \$3.00

Size:	+/- 11,700 Sq. Ft.
Floor plans	Private Offices with Windows, Large Bull Pen Area, Conference Room and Lunch Room
Year Built:	1988
Zone:	IP (Prof. Office/Industrial)
Utilities:	City Water, Sewer and Gas
Heating:	Gas Heat
Cooling:	Central A/C
Sprinklers:	Yes



Mick Consalvo
Tower Realty Corp.
203-775-5000 Office
203.241-5188 Cell
203-546-7793 Fax
mconsalvo@towercorp.com



Tower Realty Corp. / 246 Federal Rd., Suite D26, Brookfield, CT 06804 / www.towercorp.com

No warranty of representation, expressed or implied is made as to the accuracy of the information contained herein, and same is submitted subject to errors, omissions, change of price, rental, sale or other conditions, withdrawal without notice, and to any special listing conditions imposed by our principals.

~ *ADDITIONAL PHOTOS* ~

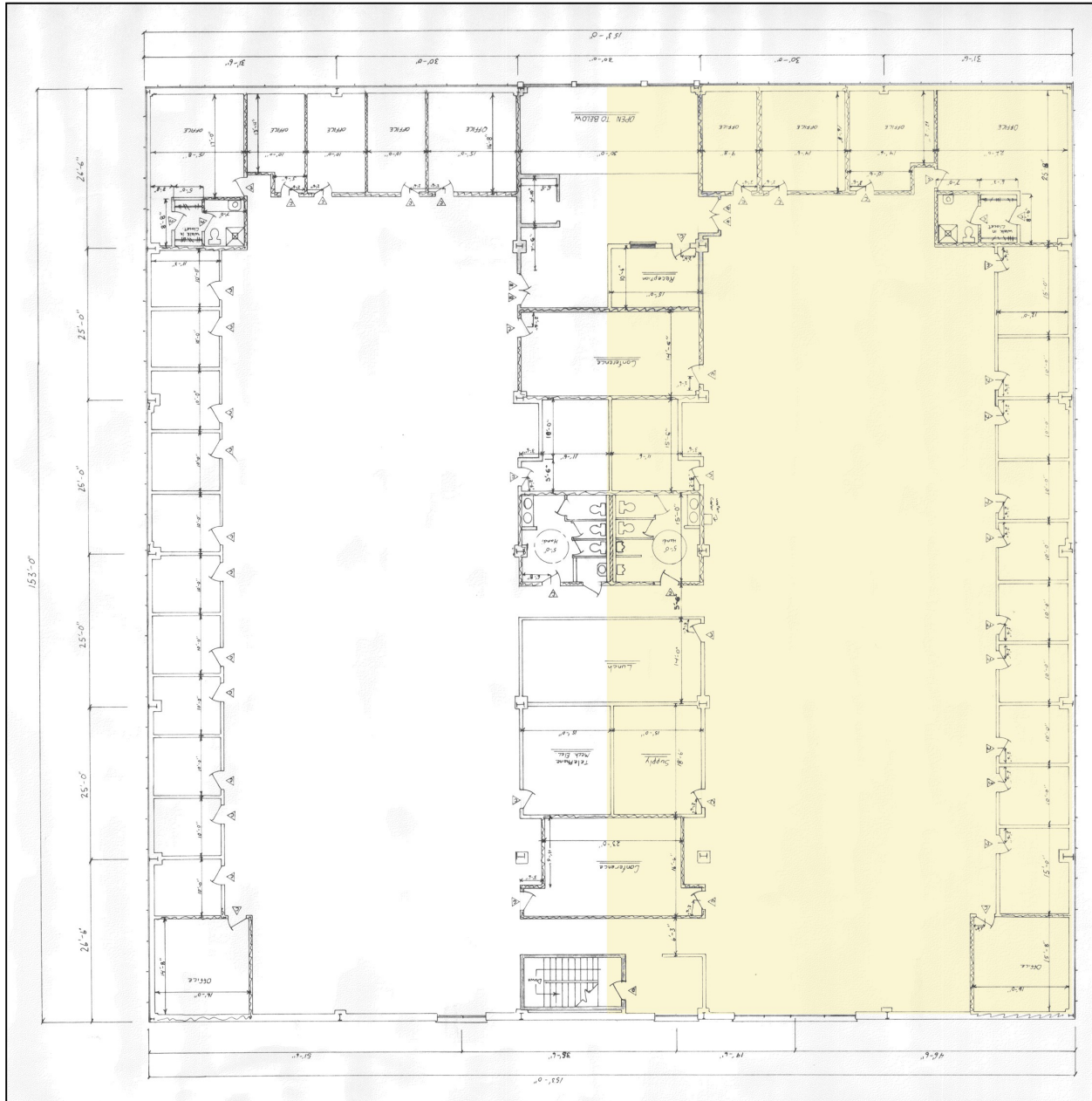
6 TROWBRIDGE DRIVE, UNIT 2B
BETHEL, CT



Mick Consalvo
203.241-5188
mconsalvo@towercorp.com

~ LAYOUT ~

6 TROWBRIDGE DRIVE, UNIT 2B
BETHEL, CT



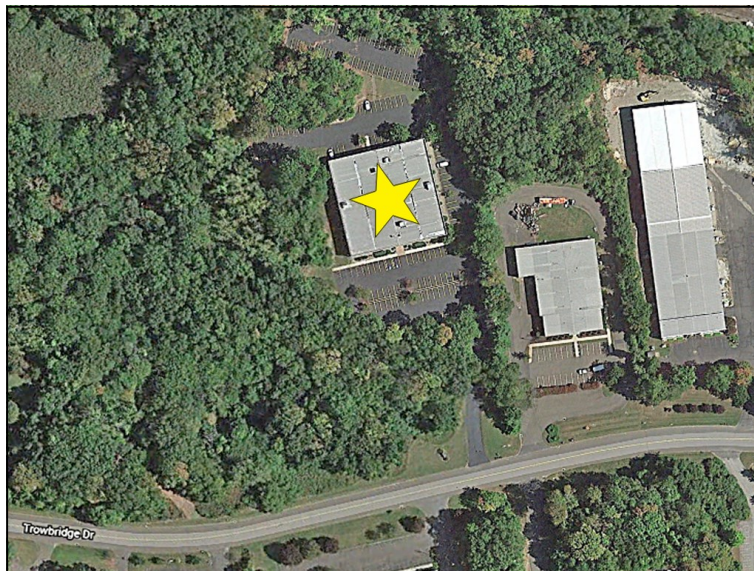
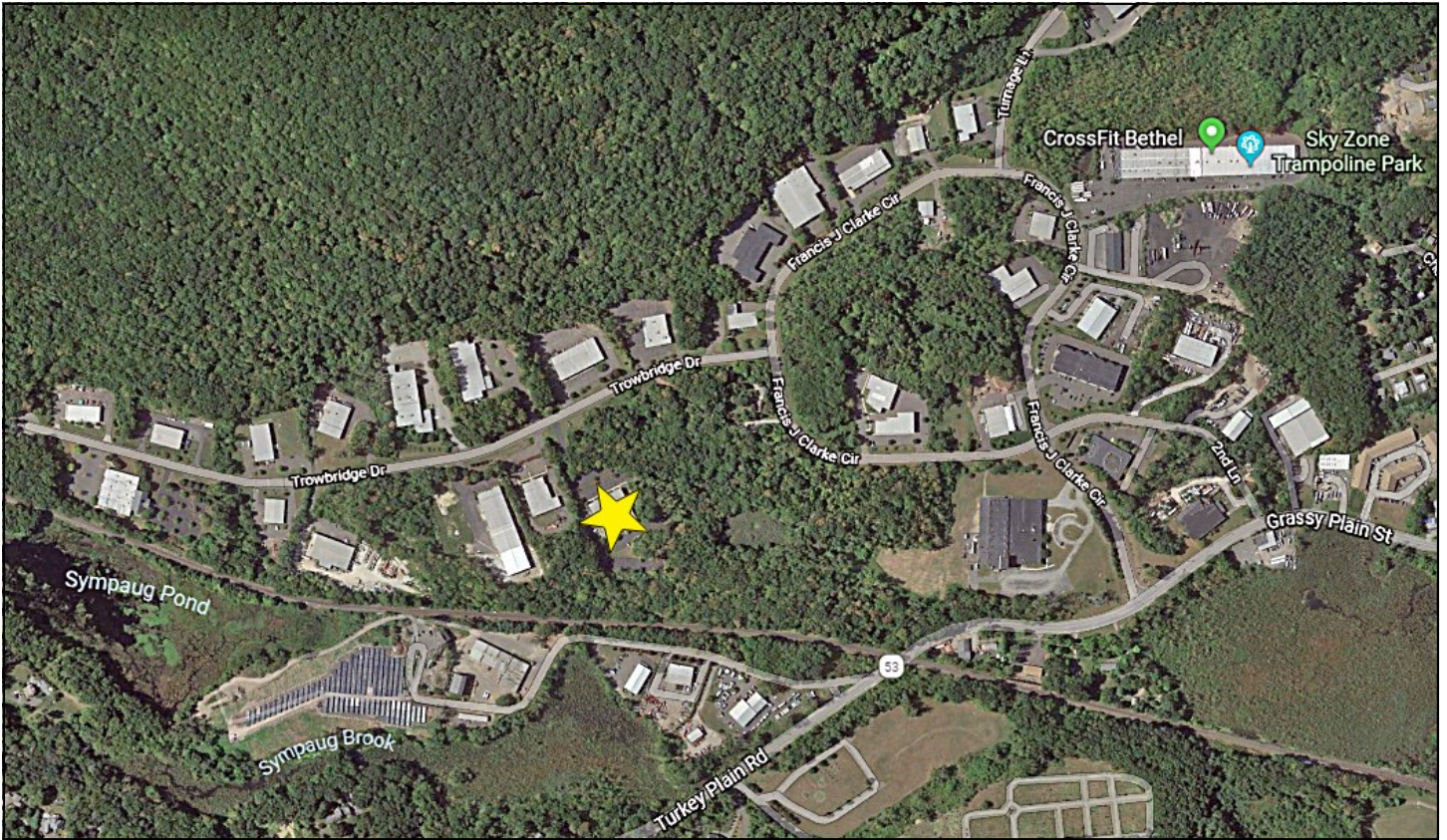
Mick Consalvo
203.241-5188
mconsalvo@towercorp.com

~ LOCATION MAPS ~



TO

6 TROWBRIDGE DRIVE,
BETHEL, CT



Mick Consalvo
203.241-5188
mconsalvo@towercorp.com