

FOR LEASE

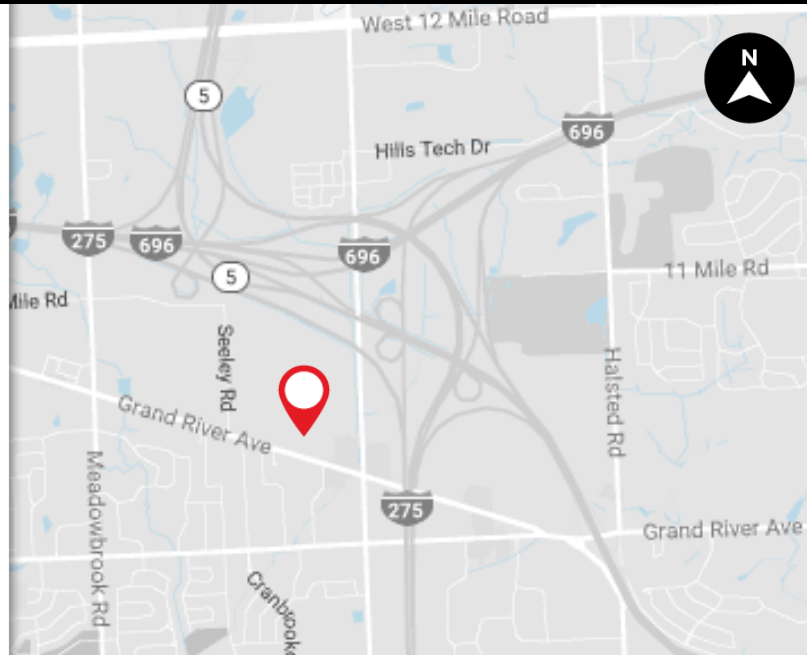
NOVI TECHNOLOGY CENTER
25540 SEELEY ROAD
BUILDING 6
NOVI, MICHIGAN 48375



NEW BUILD TO SUIT OPPORTUNITY

Total SF	24,861 SF
Office Rental Rate	\$16.00 per SF NNN
Warehouse Rental Rate	\$ 9.00 per SF NNN
Available	September 2019

- Brand new build to suit hi-tech buildings in the heart of Novi
- Ceiling heights of 16' clear
- Overhead doors
- Gas-forced air
- Abundant exterior windows
- Wooded setting
- Plentiful parking



FOR MORE INFORMATION PLEASE CONTACT:

GLENN N. DESROSIERS
glenn.desrosiers@freg.com

TODD A. HAWLEY
todd.hawley@freg.com

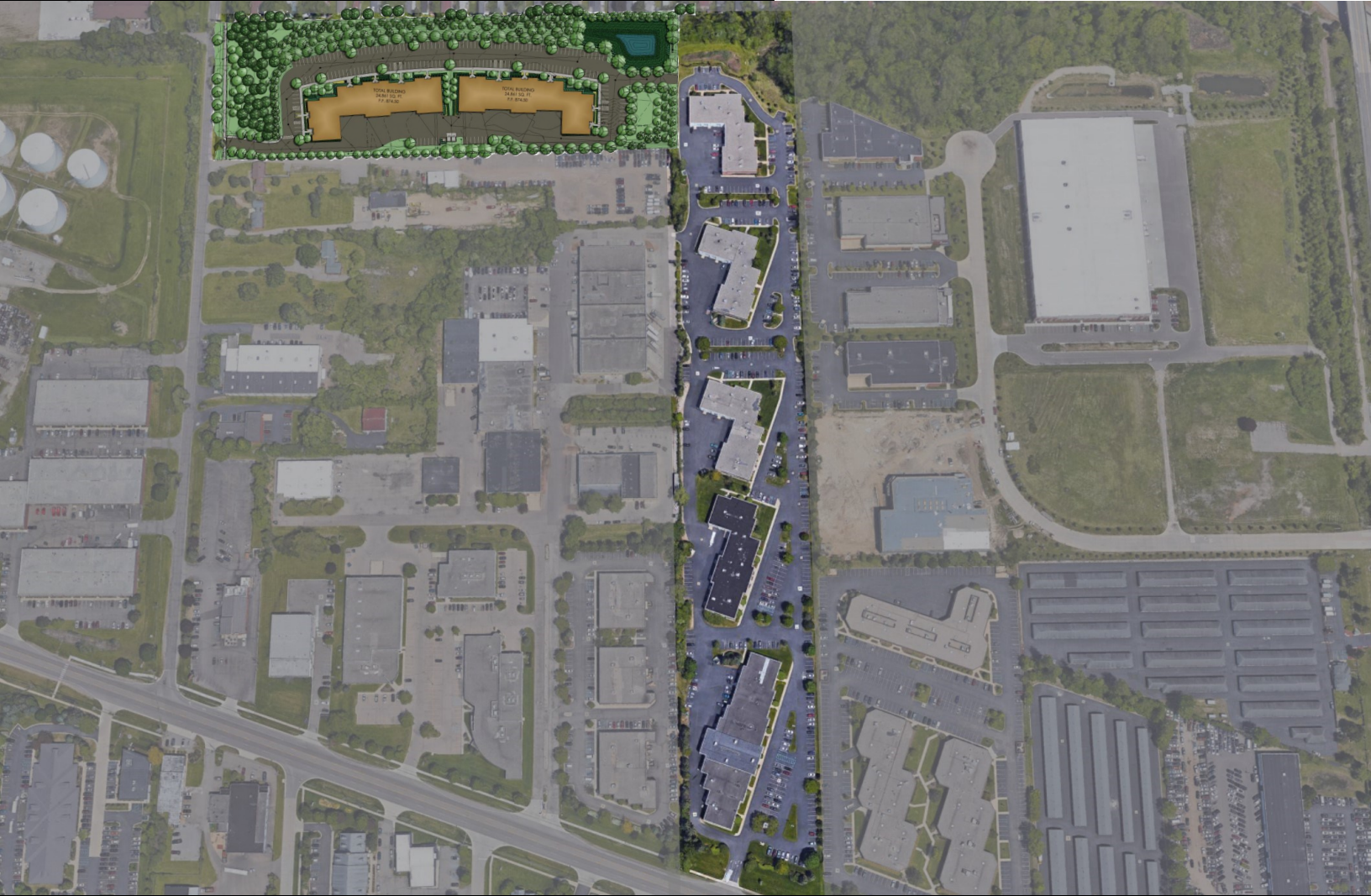
248.324.2000

INDUSTRIAL eCODE 203

Information is subject to verification and no liability for errors or omissions is assumed. We have no reason to doubt its accuracy, but we do not guarantee it.

FOR LEASE

NOVI TECHNOLOGY CENTER
25540 SEELEY ROAD
BUILDING 6
NOVI, MICHIGAN 48375



AVAILABLE SUITES

SUITE	TOTAL SF	OFFICE RATE	WAREHOUSE	AVAILABILITY
610	9,988	\$16.00*	\$9.00*	SEPTEMBER 2019

*Rent is quoted on a triple-net (NNN) basis excluding building taxes, building insurance and common area maintenance expenses. NNN charges are estimated to be approximately \$3.95 per SF per year and shall be billed to Tenant on a monthly basis. Rental rate is subject to a \$0.25/SF annual increase. Quoted rent is for "as is" space, subject to length of lease, leasehold improvements, etc. Gas and electric area separately metered and are the responsibility of the tenant.

FOR MORE INFORMATION PLEASE CONTACT:

GLENN N. DESROSIERS glenn.desrosiers@freg.com

TODD A. HAWLEY todd.hawley@freg.com

248.324.2000

INDUSTRIAL eCODE 203

Information is subject to verification and no liability for errors or omissions is assumed. We have no reason to doubt its accuracy, but we do not guarantee it.



LOCATION MAP



CIVIL ENGINEERS
LAND SURVEYORS
LAND PLANNERS

NOWAK & FRAUS ENGINEERS
46777 WOODWARD AVE
PONTIAC, MI 48341-5032
TEL. (248) 332-7931
FAX. (248) 332-8237

SEAL



PROJECT
Novi Technology Center
25540 Seelye Rd.

CLIENT
Hillside Investments
47075 Five Mile Road
Plymouth, MI 48170

Contact: Dave Hardin
Ph: (248) 904-5724

PROJECT LOCATION
Part of the NE 1/4
of Section 24
T.1 North, R.8 East
City of Novi,
Oakland County, Michigan

SHEET
Landscape Plan



DATE ISSUED / REVISED
05/15/10 REVISED PER CITY REVIEW
04/26/10 REVISED PER CITY REVIEW

DRAWN BY:
G. Ostrowski

DESIGNED BY:
G. Ostrowski

APPROVED BY:
G. Ostrowski

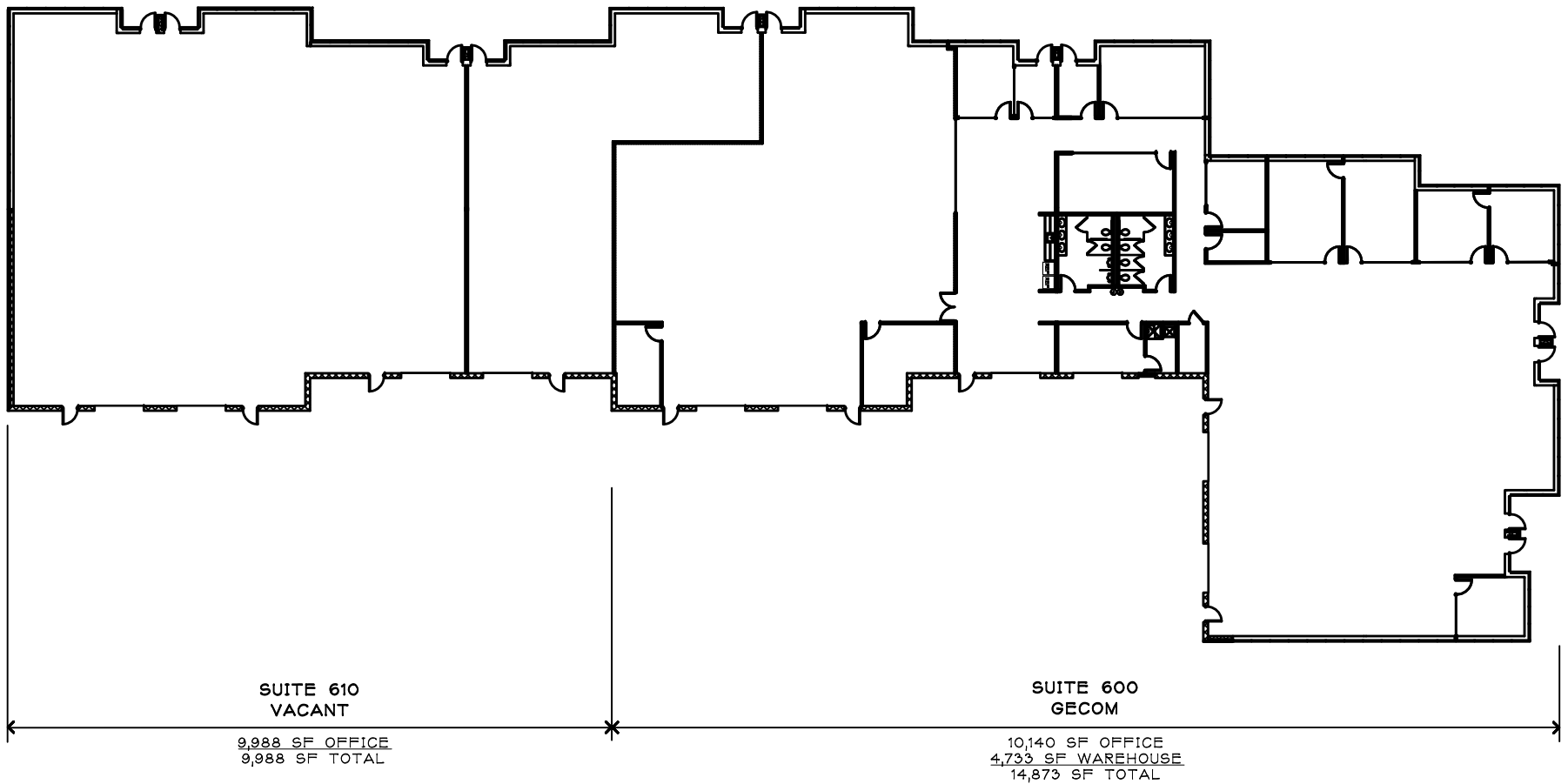
DATE:
March 23, 2010

SCALE: 1" = 40'

SEE JOB NO.
K141

SHEET NO.
L6

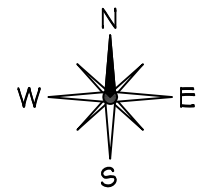




20,128 OFFICE SQFT.
 4,733 WAREHOUSE SQFT.

 24,861 TOTAL BLDG. SQFT.

EXISTING CONDITIONS
BUILDING 6
 25540 SEELEY ROAD
 NOVI, MI 48375



NOT TO SCALE



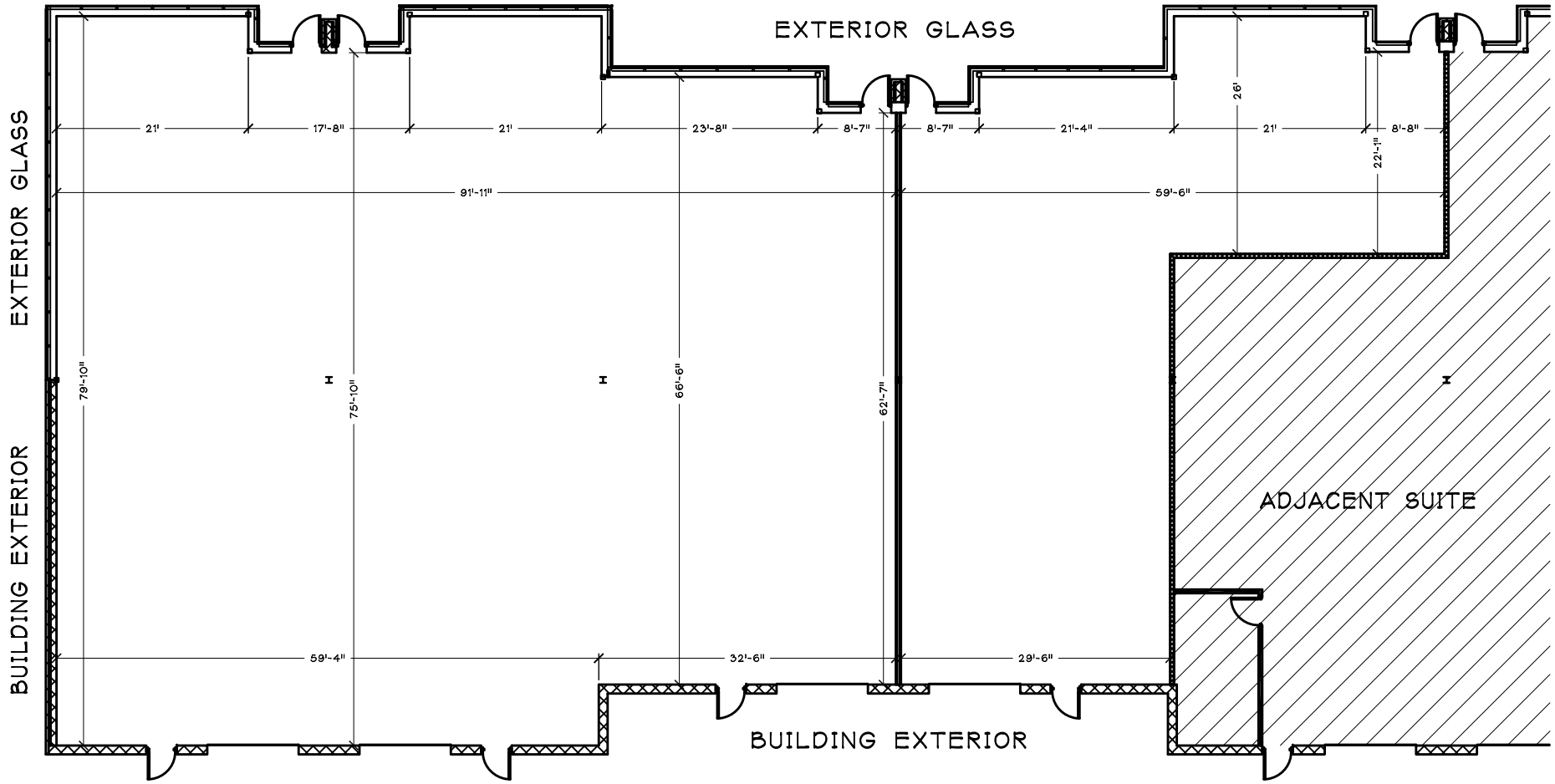
34975 West Twelve Mile Road
 Farmington Hills, Michigan 48331
 P: 248.324.2000 F: 248.848.3506
 www.friedmanrealestate.com



01.16.19



30500 NORTHWESTERN HWY. SUITE 311
 FARMINGTON HILLS, MI 48334
 PHONE (248) 855-7040 FAX (248) 855-7744
 WWW.DAVISINTERIORDESIGN.COM



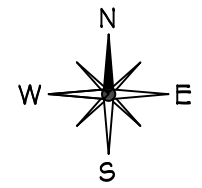
KEY PLAN

FRIEDMAN
 INTEGRATED REAL ESTATE SOLUTIONS
 34975 West Twelve Mile Road
 Farmington Hills, Michigan 48331
 P: 248.324.2000 F: 248.848.3506
 www.friedmanrealestate.com

HILLSIDE
 INVESTMENTS

EXISTING CONDITIONS
SUITE 610
 NOVI TECHNOLOGY CENTER
 25540 SEELEY ROAD
 NOVI, MI 48375

9,988 SF
 01.14.19



NOT TO SCALE
DAVIS & DAVIS
 INTERIOR DESIGN CO.
 30500 NORTHWESTERN HWY. SUITE 311
 FARMINGTON HILLS, MI 48334
 PHONE (248) 855-7040 FAX (248) 855-7744
 WWW.DAVISINTERIORDESIGN.COM