

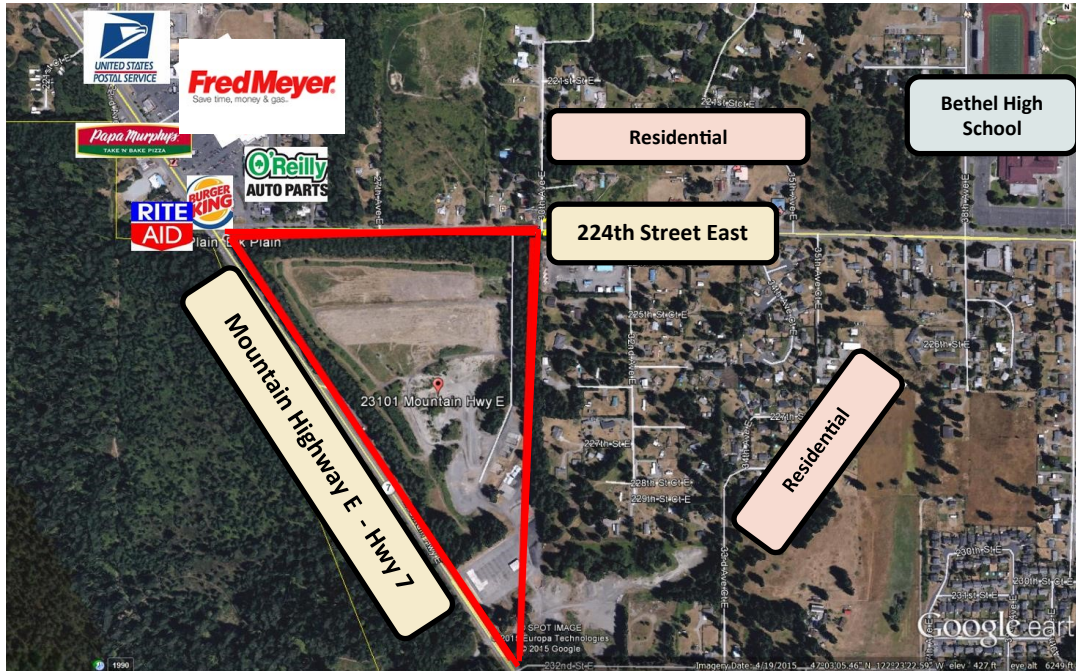


253-589-2222

Commercial/Industrial/Investment Real Estate Experts Since 1974

23101 Mountain Highway East
Elk Plain/Spanaway, WA
APN 0318142001

For Sale



Located just across the street from Fred Meyer and 1.5 miles from the 24-hour Walmart SuperCenter (grocery, pharmacy, photo center, vision center, and Subway), Denny's, Jack-in-the-Box, and within close proximity to Joint Base Lewis-McChord.

Linn Larsen, SIOR

Linn Larsen, LLC
Email:
linn@linnlarsen.com
3906 South 74th Street
Tacoma, WA 98409
253-589-2222
WWW.LINNLARSEN.COM
www.linnlarsen.com

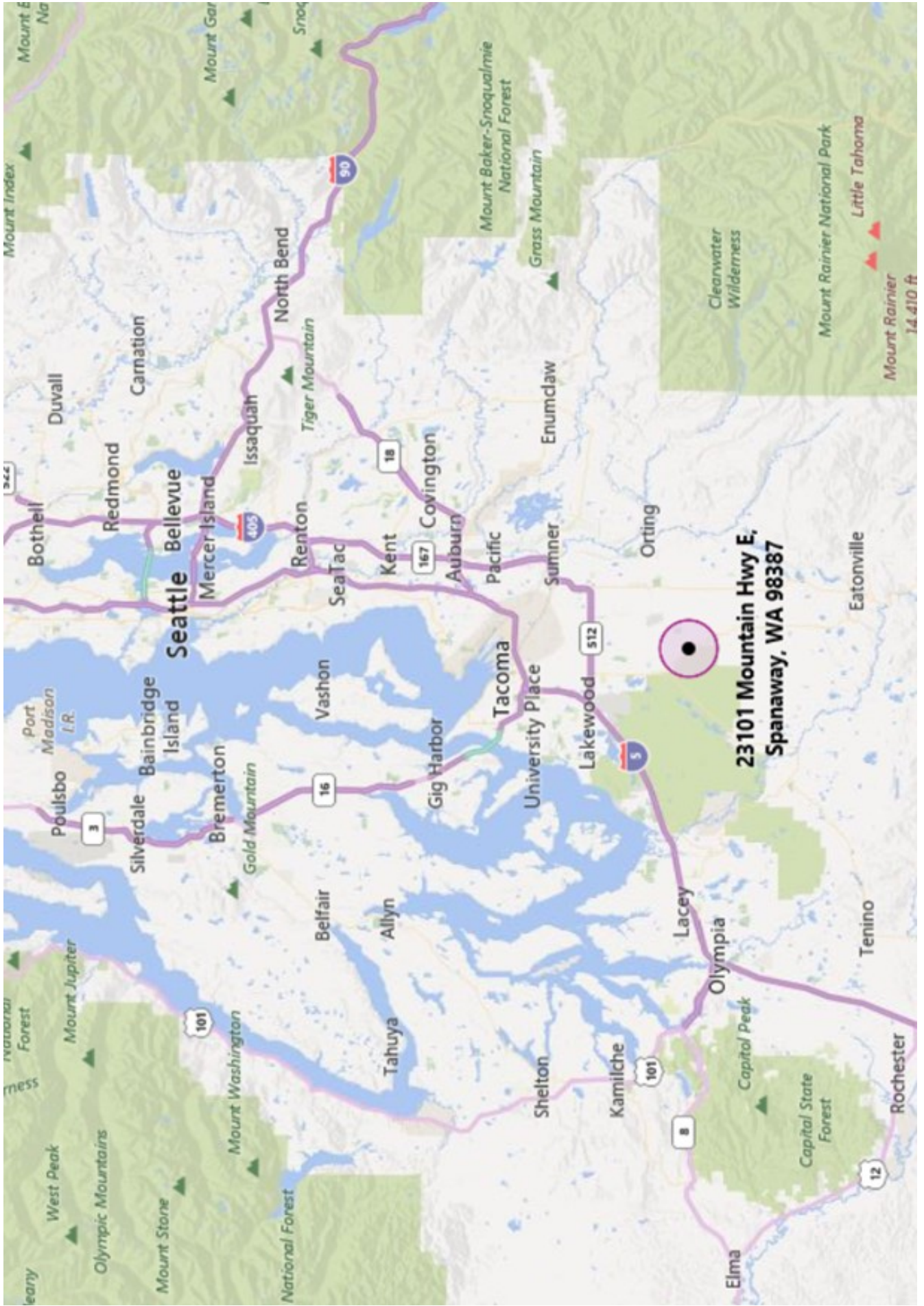


Pierce County's Elk Plain property is located in Pierce County, just south of Spanaway off of State Highway 7 (also known as Mountain Highway).

Property Description

The site is zoned MUD (Mixed-Use District under the Graham Community Plan). The site is bounded to the north by 224th St. E, to the west by Highway 7/Mountain Highway), and to the east by residential and commercial properties. According to the Pierce County Assessor's/Treasurer's office, the site measures 2,748,636 square feet (63.1 acres).

Disclaimer: These statements are based upon information we believe to be correct and are obtained from sources we regard as reliable, but we assume no liability for errors or omissions

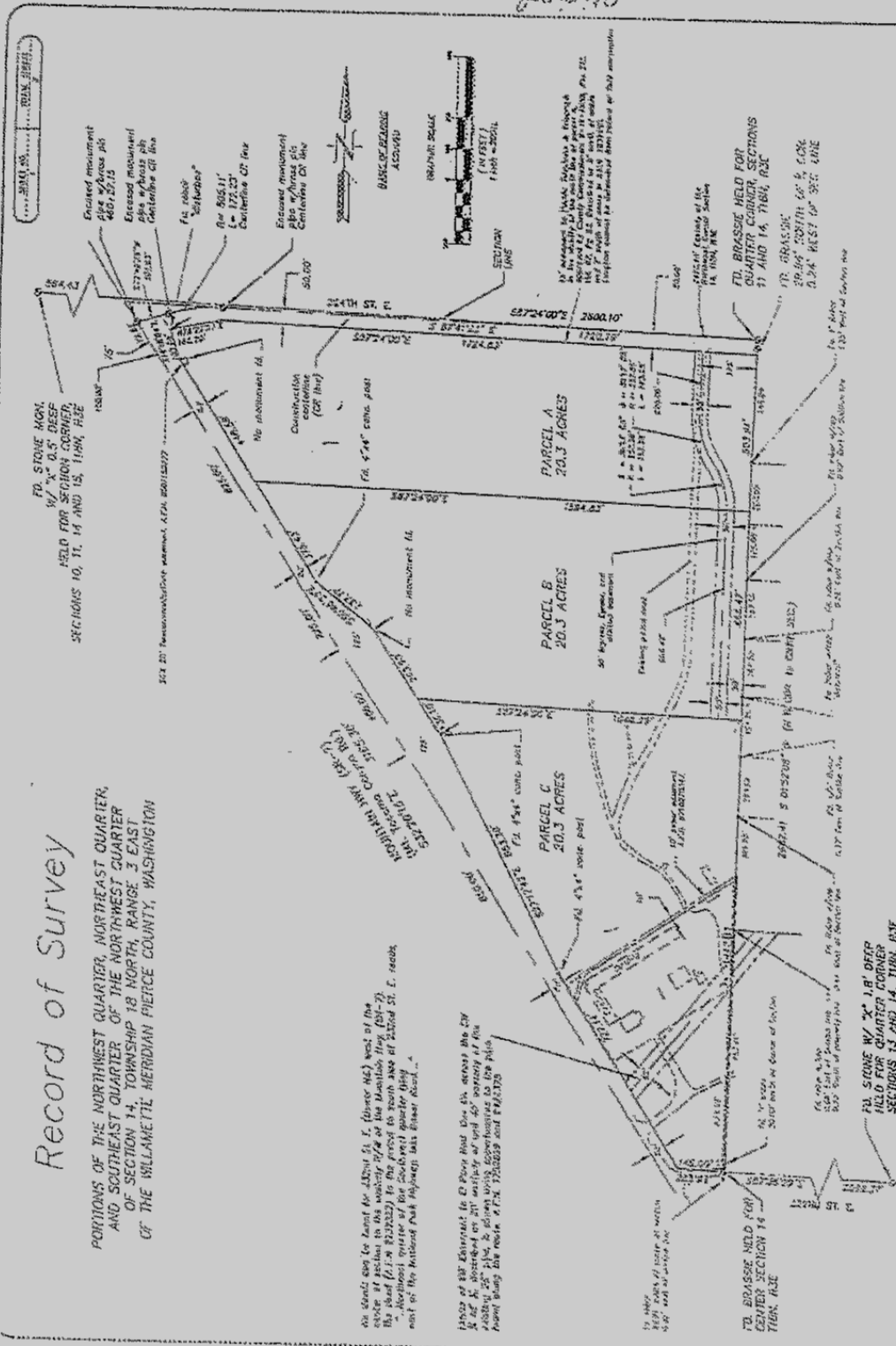


Survey for Elk Plain Shops 03-18-14-2-001

20041102601

Record of Survey

PORTIONS OF THE NORTHWEST QUARTER, NORTHEAST QUARTER,
AND SOUTHEAST QUARTER OF THE NORTHWEST QUARTER
OF SECTION 14, TOWNSHIP 18 NORTH, RANGE 3 EAST
OF THE WILLAMETTE MERIDIAN PIERCE COUNTY, WASHINGTON



ELK PLAIN SHOP

SEGREGATION

CRP 8020

Pierce County
Department of Public Works and Utilities
Transportation Services
2401 South 24th Street, Ste. 100
Tacoma, Washington 98405-7485

John C. [Signature]
Professional Engineer
No. 10000
10000
10000

PL. SORNE W/ "X" 1.8' OFFER
HILLO FOR QUARTER CORNER
SECTIONS 13 AND 14, T18N, R3E

Original