



JUDD COMMERCIAL PROPERTIES, LLC.

ST. PAUL OFFICE SPACE

FOR LEASE

2288 UNIVERSITY AVENUE W

SAINT PAUL, MN

SUITE NUMBER:

206 & 207

SUITE SIZE:

1,358 - 206

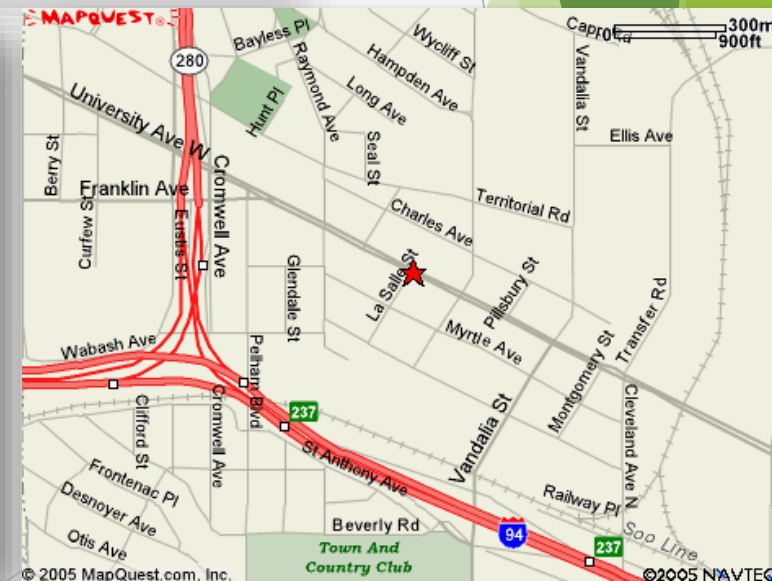
1,605 - 207

FEATURES:

- TRADITIONAL PROFESSIONAL OFFICES
- 9 FOOT CEILINGS
- MANY WINDOWS
- DEDICATED HVAC CONTROL
- SECURED ENTRY - 24/7 ACCESS
- COMMON UNISEX RESTROOM W/SHOWER PLUS TRADITIONAL WOMENS AND MENS RESTROOMS
- FREIGHT ELEVATOR
- EXCELLENT PARKING
- GREEN LINE STATION DIRECTLY ACROSS UNIVERSITY
- GOOD RESTAURANTS NEARBY

2018 RENT:

\$14.50/SF/YR GROSS



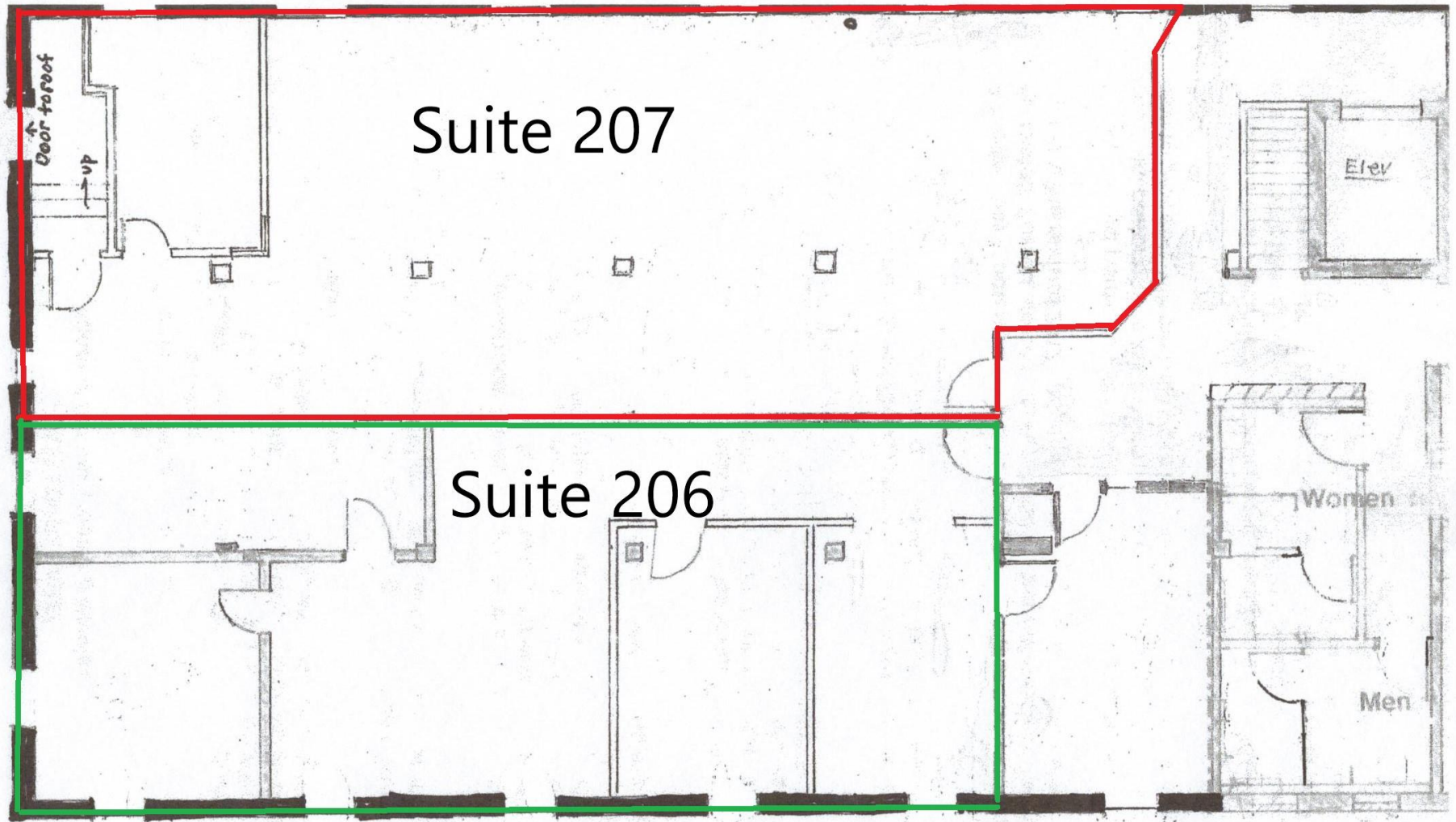
FOR ADDITIONAL INFORMATION PLEASE CONTACT:

Brian Fulford, Broker
651.646.6845

brian@juddrealty.com

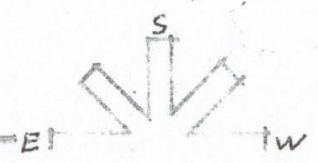
ALL INFORMATION CONTAINED HEREIN IS FROM SOURCED DEEMED TO BE RELIABLE HOWEVER NO GUARANTY IS MADE AS TO ITS ACCURACY. PURCHASER MUST RELY SOLELY ON ITS OWN INVESTIGATIONS.

SUITES 206 & 207 - FLOOR

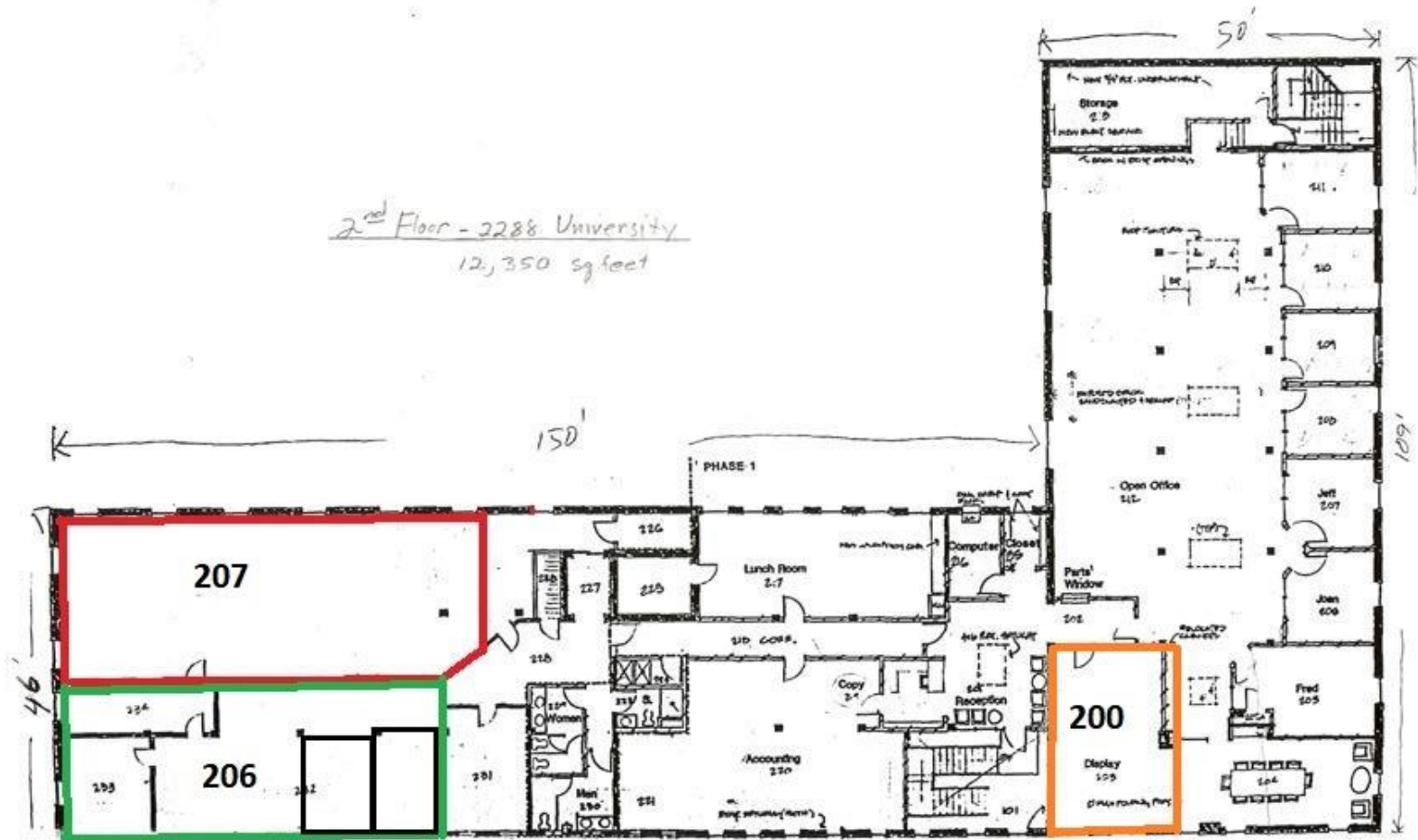


1/8" = 1' approx

Floor Plan 2288 UNIV. Ave 2nd Floor



2ND FLOOR LAYOUT



2nd Floor Office – Floor Plan

