

252 BROOME ST

BETWEEN ORCHARD & LUDLOW STREETS

PRIME **LES** RESTAURANT SPACE AVAILABLE

SIZE:

1,500 SF — GROUND

1,000 SF — BASEMENT

FRONTAGE: 25 FEET

POSSESSION: IMMEDIATE

COMMENTS:

- FULLY VENTED RESTAURANT SPACE
- FULL LIQUOR LICENSE IN PLACE
- STEPS FROM THE F-J-M-Z SUBWAY LINES AND THE NEW ESSEX CROSSING DEVELOPMENT SITE, WITH 1,000 NEW RESIDENCES, 400,000SF OF OFFICE SPACE AND 450,000SF OF RETAIL SPACE



Newmark
Knight Frank

www.ngkf.com/retail



EXCLUSIVE AGENTS:

JASON PRUGER 212.372.2092 JPRUGER@NGKF.COM

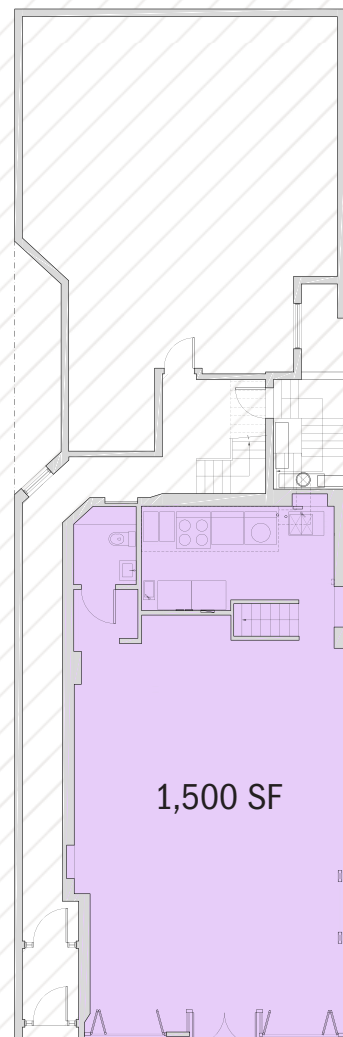
LUCAS KOOYMAN 212.372.2384 LKOOYMAN@NGKF.COM

252 BROOME ST

BETWEEN ORCHARD & LUDLOW STREETS

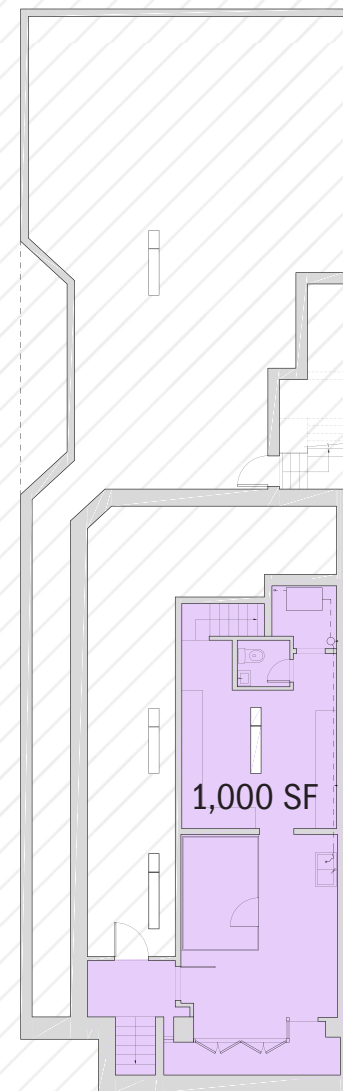


GROUND FLOOR



BROOME ST

BASEMENT



Newmark
Knight Frank

www.ngkf.com/retail



EXCLUSIVE AGENTS:

JASON PRUGER 212.372.2092 JPRUGER@NGKF.COM

LUCAS KOOYMAN 212.372.2384 LKOOYMAN@NGKF.COM

The information contained herein has been obtained from sources deemed reliable but has not been verified and no guarantee, warranty or representation, either express or implied, is made with respect to such information. Terms of sale or lease and availability are subject to change or withdrawal without notice.

252 BROOME ST

BETWEEN ORCHARD & LUDLOW STREETS

NEIGHBORING TENANTS:

Russ & Daughters Café, Hotel Chantelle, The Delancey, Doughnut Plant, The Boil, The DL, Starbucks, The Ten Bells, Dirt Candy, Vanessa's Dumpling House



SITE

Tenants that will occupy ESSEX CROSSING INCLUDE: Trader Joe's, Regal Cinemas, Planet Fitness, Target



KEY

- DINING
- HOTELS
- RETAIL
- POINT OF INTEREST

Newmark Knight Frank
www.ngkf.com/retail



EXCLUSIVE AGENTS:
JASON PRUGER 212.372.2092 JPRUGER@NGKF.COM
LUCAS KOOYMAN 212.372.2384 LKOOYMAN@NGKF.COM