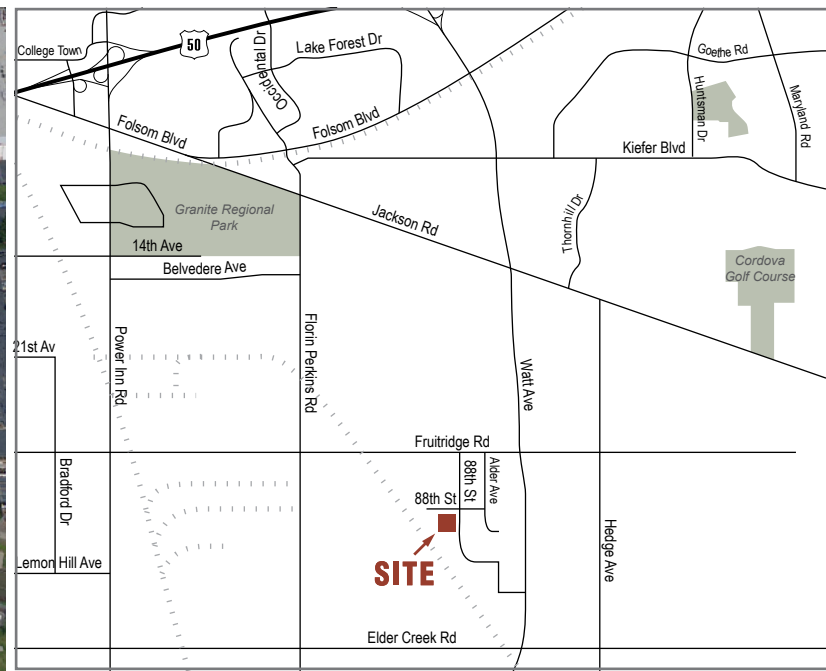


AVAILABLE | 5870 88th Street, Sacramento, CA 95828

Voit
REAL ESTATE SERVICES

±43,000 SF Total with ± 3,000 SF Office
± 11,400 SF (Shared Covered Staging Area)



Bob Keady
Vice President
Lic #00962943
916.751.3613
bkeady@voitco.com

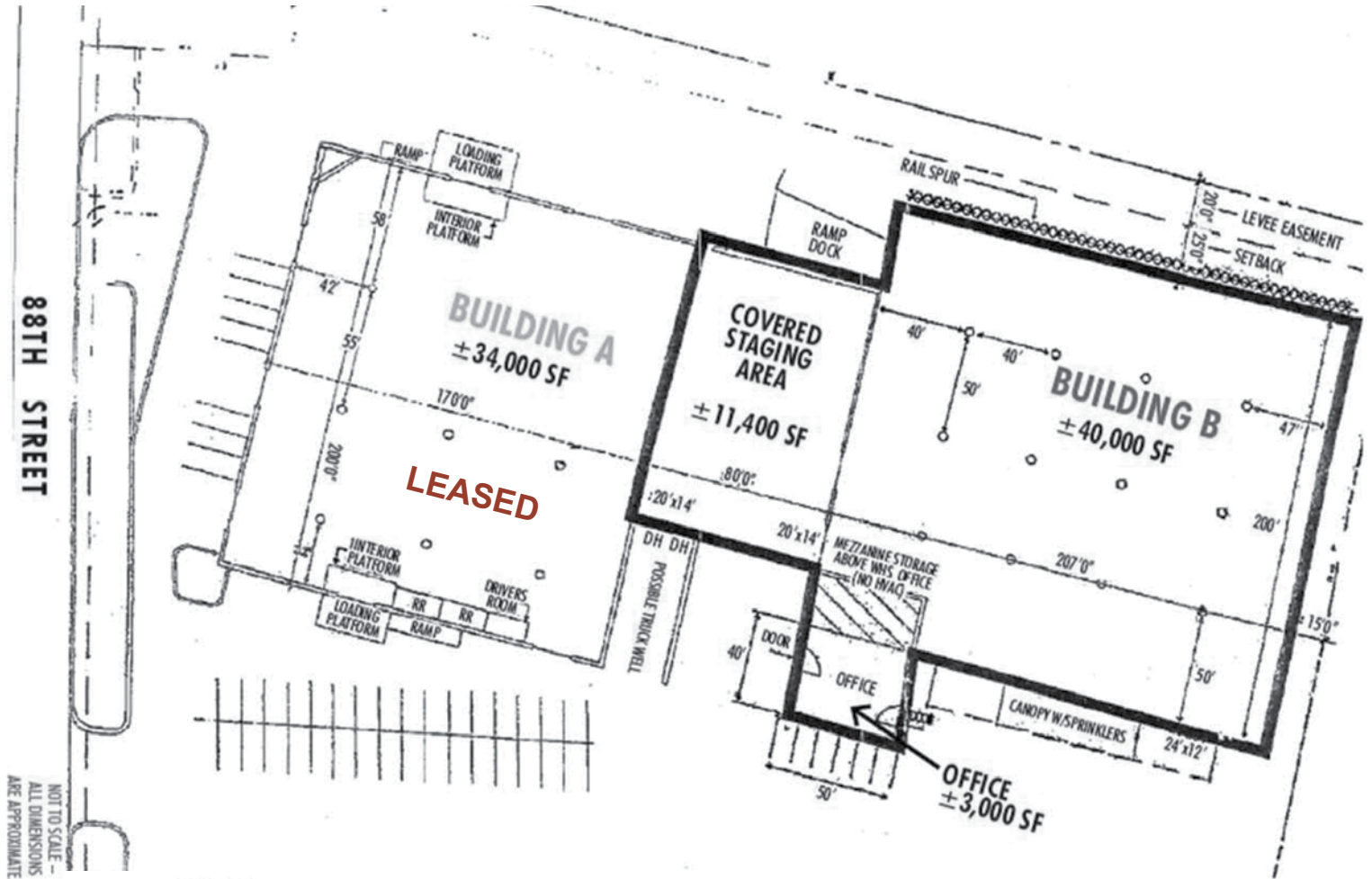
Rob Mora
Industrial Sales & Investment
Lic. #01792907
916.751.3626
rmora@voitco.com

2237 Douglas Blvd., Suite 100, Roseville, CA 95661 • 916.772.8648 • 916.848.0205 Fax • Lic #01333376 | www.voitco.com

Real People. Real Solutions.®

±43,000 SF Total with ± 3,000 SF Office

± 11,400 SF (Covered Staging Area)



Facilities

- Building B: ±43,000 SF Total with ±3,000 SF of Office
- Shared Covered Staging Area: ±11,400 SF
- Multiple Grade Level Doors and Docks
- Fenced Yard Area
- Zoned M-2S

Bob Keady
Vice President
Lic #00962943
916.751.3613
bkeady@voitco.com

Rob Mora
Industrial Sales & Investments
Lic.#01792907
916.751.3626
rmora@voitco.com

Voit
REAL ESTATE SERVICES