



Hodges

Commercial Real Estate | Warehouse + Logistics

**THE RIGHT PLACE.
THE RIGHT SPACE.**

Call 334.280.2033

Property Overview

- **Lot Size: 18,082 S.F.**
- **Building Size: 7,100 + S.F.**
- **One Over-head Steele Door**
- **Visibility: Good**
- **Year Built: 2017**
- **Zoning: D**

Modern Office Warehouse Available!

Located just off Atlanta Highway, a very busy commercial corridor within close proximity to a variety of established Shoppe's and eateries. The property rests on a 18,000+ S.F. lot. The Office Warehouse consists of one (1) 1,100 S.F. office with a 6,025 S.F. warehouse. For sale or lease. Call today for more information or to schedule your tour!



350 E. Mendel Pkwy. Montgomery, AL 36117

Sale Price: \$375,000



Paul Hodges

Cell: 334.280.2033

Email: paul.hodges@hodgeswarehouse.com

1065 N. Eastern Blvd

Montgomery, AL 36117

hodgescommercialrealestate.com

*All information is from sources deemed reliable, but no warranty is made as to the accuracy thereof and same is submitted subject to errors, omissions, change of price, or other conditions, such as prior sales or withdrawal without notice by Hodges Commercial Real Estate, Inc. or the Owner.



Hodges

Commercial Real Estate | Warehouse + Logistics

THE RIGHT PLACE. THE RIGHT SPACE.

Call 334.280.2033

Photo's



Paul Hodges

Cell: 334.280.2033

Email: paul.hodges@hodgeswarehouse.com

1065 N. Eastern Blvd

Montgomery, AL 36117

hodgescommercialrealestate.com

*All information is from sources deemed reliable, but no warranty is made as to the accuracy thereof and same is submitted subject to errors, omissions, change of price, or other conditions, such as prior sales or withdrawal without notice by Hodges Commercial Real Estate, Inc. or the Owner.

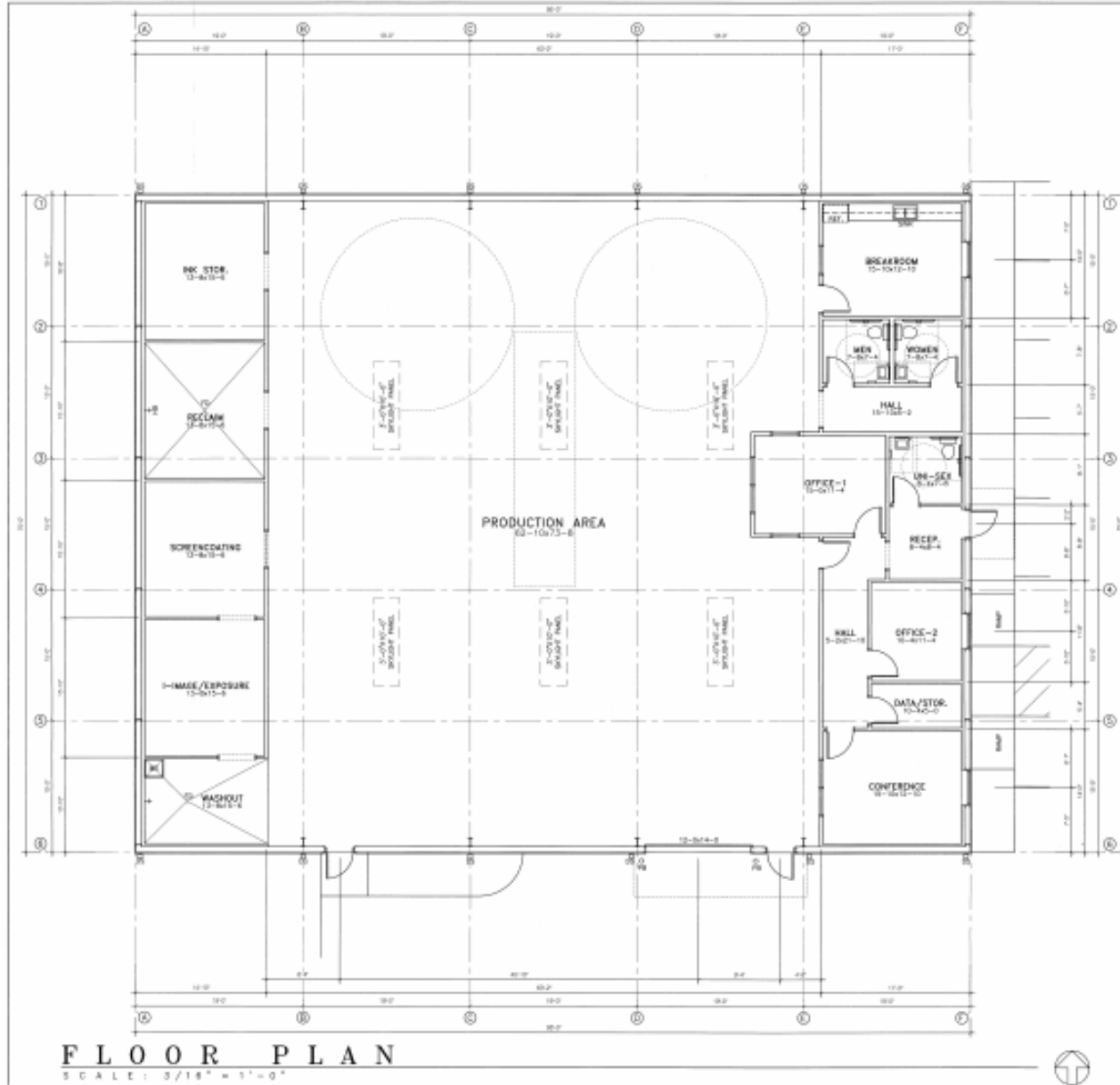


Hodges

Commercial Real Estate | Warehouse + Logistics

THE RIGHT PLACE. THE RIGHT SPACE.

Call 334.280.2033



FLOOR PLAN LEGEND

- METAL WALL PURLINS WITH SOINGS
- 6" CMU 4'-0" HIGH AT BASE OF WALL AND METAL WALL PURLINS WITH SOINGS ABOVE
- 3 1/2" METAL STUDS STUD WITH 5/8" GYP. BD. AND SOUND BATT INSUL.
- 6" METAL STUDS WITH 5/8" GYP. BD. AND SOUND BATT INSUL. (PLUMBING WALL)
- DOOR AND FRAME AS SCHEDULED
- WINDOW AS SCHEDULED
- INDICATES MECHANICAL PLATFORM LOCATION (VERIFY EXACT SIZE WITH MECH.)
- FIRE EXTINGUISHER CABINET
- FIRE EXTINGUISHER (BRACKET MOUNTED)
- HOSE BIBB
- MOP SINK
- DOWNSPOUT
- PIPE BOLLARD

ROBERT V. MULLEN III
ARCHITECTURE, L.L.C.
Robert V. Mullen III
ARCHITECT
AIA, AIA-CES
1000 N. 2nd Ave. Long
Montgomery, Alabama 36104
Tel: 334-263-1111
Cell: 334-263-1111
Fax: 334-263-1111

DANNY CLEMENTS
BUILDER, INC.
1024 Monticello Park
Montgomery, Alabama
(334) 279-0505
State General Contractors
License No. 19095

A NEW BUILDING
for
AMERICAN KLASIC
DESIGN
MENDEL PARKWAY EAST / MONTGOMERY, ALABAMA

Site/Found.

ISSUE:	DATE:
PRELIMINARY	12/12/18
Site/Found	01/26/17

SHEET TITLE:
FLOOR PLAN

SHEET NUMBER:
A1.01

*All information is from sources deemed reliable, but no warranty is made as to the accuracy thereof and same is submitted subject to errors, omissions, change of price, or other conditions, such as prior sales or withdrawal without notice by Hodges Commercial Real Estate, Inc. or the Owner.



Hodges

Commercial Real Estate | Warehouse + Logistics

THE RIGHT PLACE. THE RIGHT SPACE.

Call 334.280.2033



Paul Hodges

Cell: 334.280.2033

Email: paul.hodges@hodgeswarehouse.com

**1065 N. Eastern Blvd
Montgomery, AL 36117**

hodgescommercialrealestate.com

*All information is from sources deemed reliable, but no warranty is made as to the accuracy thereof and same is submitted subject to errors, omissions, change of price, or other conditions, such as prior sales or withdrawal without notice by Hodges Commercial Real Estate, Inc. or the Owner.