

# 898 SF MEDICAL OR OFFICE SUITE FOR LEASE

## OAK GROVE PROFESSIONAL BUILDING

25109 JEFFERSON AVENUE | MURRIETA, CA 92562

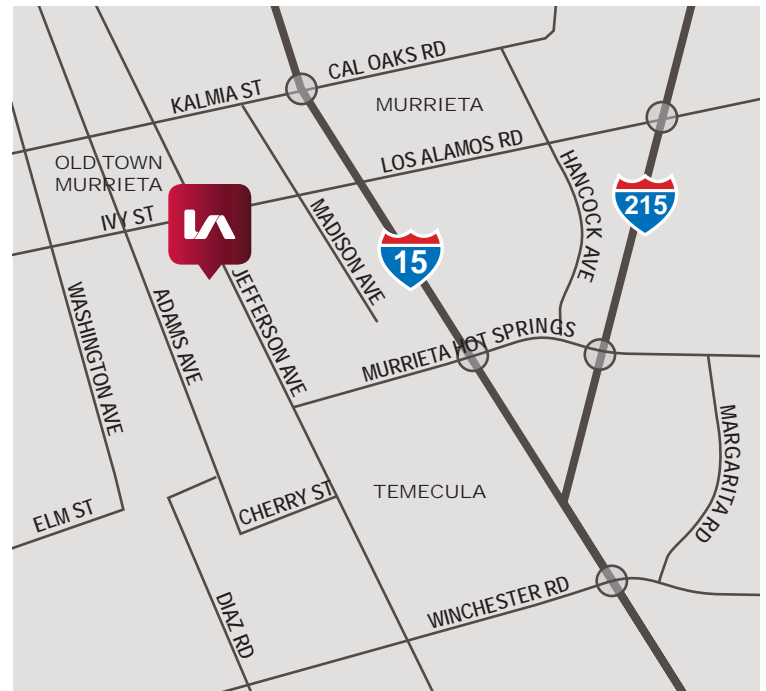


### PROPERTY FEATURES:

- Class "A" Professional Office & Medical Building
- Strategically located in Murrieta within close proximity to Old Town Murrieta, I-15 & I-215 Freeways, Murrieta Hot Springs Rd & the Ivy Street/Los Alamos Road Over Pass
- WiFi & FIOS Enabled
- 4.3/1,000 Parking Ratio
- Building Signage Considered
- Contact Agent for Showing Instructions

### LEASE RATE: \$2.00 PSF-MG\*

(\*MODIFIED GROSS DOES NOT INCLUDE PREMISES JANITORIAL & ELECTRICITY)



Sheri Shoemaker  
951.445.4510  
sshoeemaker@leetemecula.com  
Lic.#00846946

Mary Piper  
951.445.4516  
mpiper@leetemecula.com  
Lic.#01268829

No warranty or representation has been made to the accuracy of the foregoing information. Terms of sale or lease and availability are subject to change or withdrawal without notice. Lee & Associates Commercial Real Estate Services, Inc. - Riverside. 25240 Hancock Avenue, Suite 100 - Murrieta, CA 92562 Corporate ID# 01048055

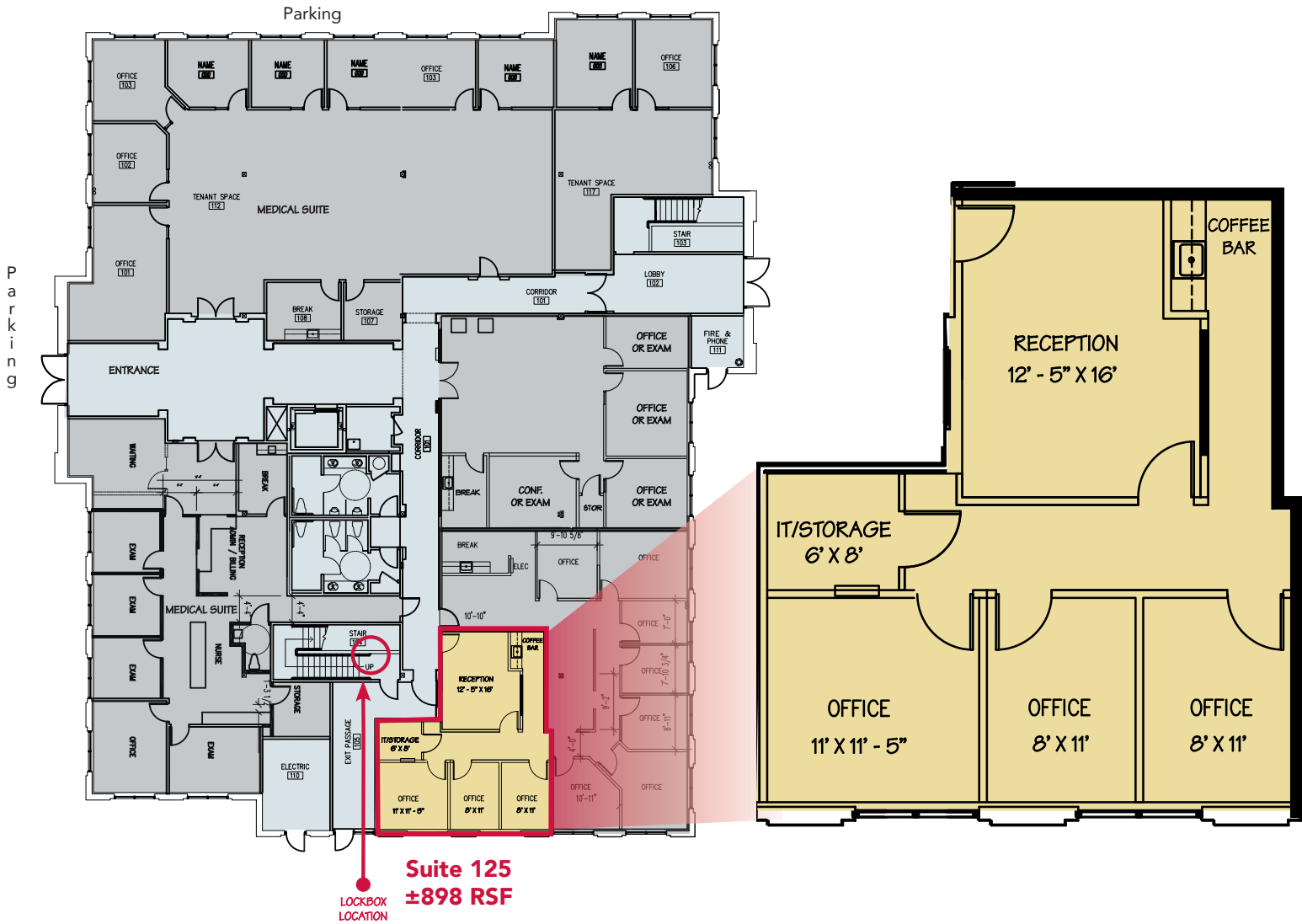
# 898 SF MEDICAL OR OFFICE SUITE FOR LEASE

## OAK GROVE PROFESSIONAL BUILDING

25109 JEFFERSON AVENUE | MURRIETA, CA 92562



SUITE	RSF	USF	AVAILABILITY	DESCRIPTION	RATE
125	±898	±783	Immediately	Waiting room, three private offices, IT & Storage room	\$2.00 per RSF/MG*
Contact Agent For Touring Instructions *Modified Gross does not include in-suite janitorial or electricity.					
Rev. 12/7/18					



Sheri Shoemaker  
 951.445.4510  
 sshoemaker@leetemecula.com  
 Lic.#00846946

Mary Piper  
 951.445.4516  
 mpiper@leetemecula.com  
 Lic.#01268829

No warranty or representation has been made to the accuracy of the foregoing information. Terms of sale or lease and availability are subject to change or withdrawal without notice. Lee & Associates Commercial Real Estate Services, Inc. - Riverside. 25240 Hancock Avenue, Suite 100 - Murrieta, CA 92562 Corporate ID# 01048055