

# BLOCK ONE OFFICE BUILDING

1330 PAGE DRIVE, FARGO, ND 58103



**Jeremy Horst**

701.893.2804

[Jeremy.Horst@goldmark.com](mailto:Jeremy.Horst@goldmark.com)

  
**GOLDMARK™**  
COMMERCIAL REAL ESTATE INC

1711 Gold Drive South, Suite 130  
Fargo, North Dakota 58103  
[www.goldmarkcommercial.com](http://www.goldmarkcommercial.com)  
[commercialinfo@goldmark.com](mailto:commercialinfo@goldmark.com)

**FOR LEASE**

# BLOCK ONE OFFICE BUILDING

1330 PAGE DRIVE, FARGO, ND 58103

## Property Overview:

Professional office suites located on 13th Avenue next to Ground Round. Suite 202C has new carpet and paint and is move-in ready.



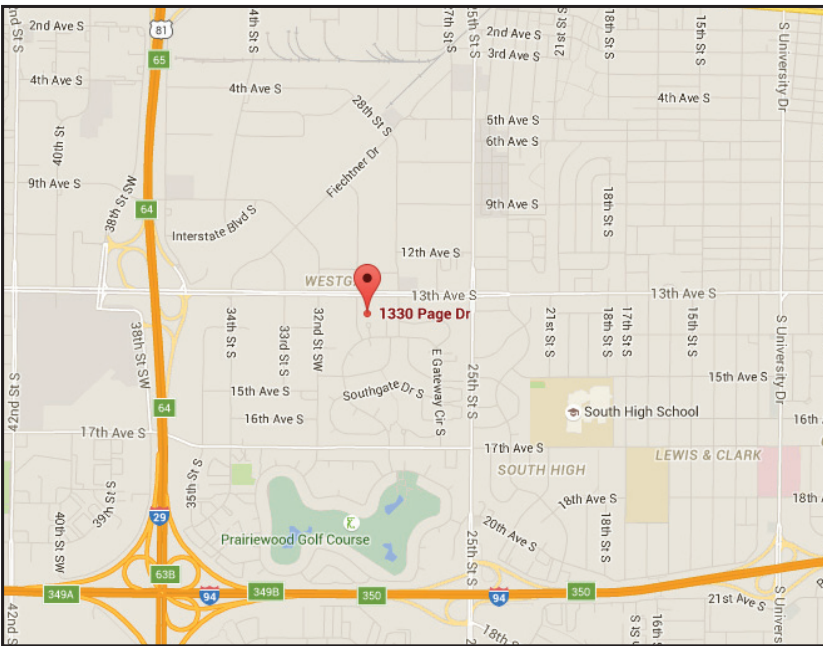
## Property Details

**Space Available:**  
Suite 202C - 761 SF

**Rent:**  
Suite 202C - \$825/month

**Tenant Expenses:**  
Utilities

**Neighboring Businesses:**  
Ground Round  
Bell Bank  
US Post Office  
Applebees  
Caribou Coffee



  
**GOLDMARK™**  
COMMERCIAL REAL ESTATE INC

Jeremy Horst  
Jeremy.Horst@goldmark.com  
701.893.2804 (O) 701.371.8234 (C)

www.goldmarkcommercial.com  
commercialinfo@goldmark.com

This information has been secured from sources we believe to be reliable, but we make no representation or warranties, expressed or implied, as to the accuracy of the information. Interested parties should conduct their own independent investigations and rely only on those results.



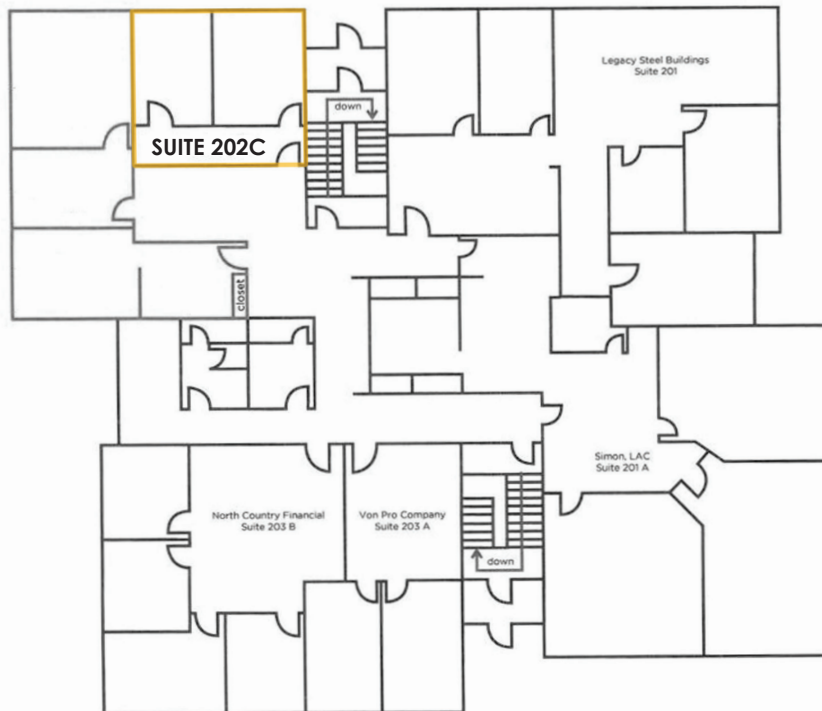
# BLOCK ONE OFFICE BUILDING

1330 PAGE DRIVE, FARGO, ND 58103

## SUITE 202C



## BLOCK 1 UPPER LEVEL



Jeremy Horst  
Jeremy.Horst@goldmark.com  
701.893.2804 (O) 701.371.8234 (C)

www.goldmarkcommercial.com  
commercialinfo@goldmark.com