

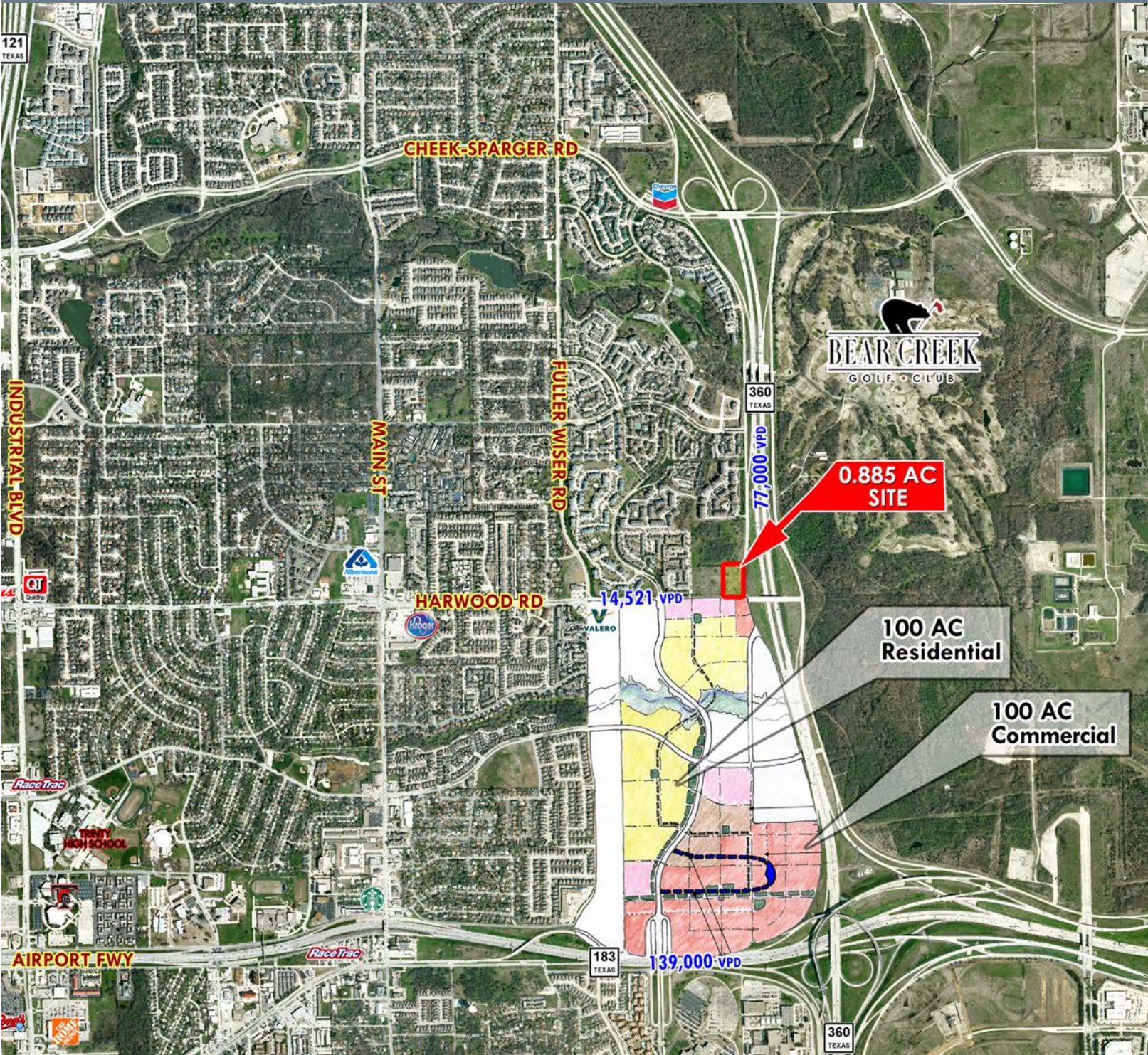
HARWOOD 360 PAD SITE

FOR SALE OR GROUND LEASE

EULESS, TEXAS

E. HARWOOD & SH 360

CHRIS CORBIN



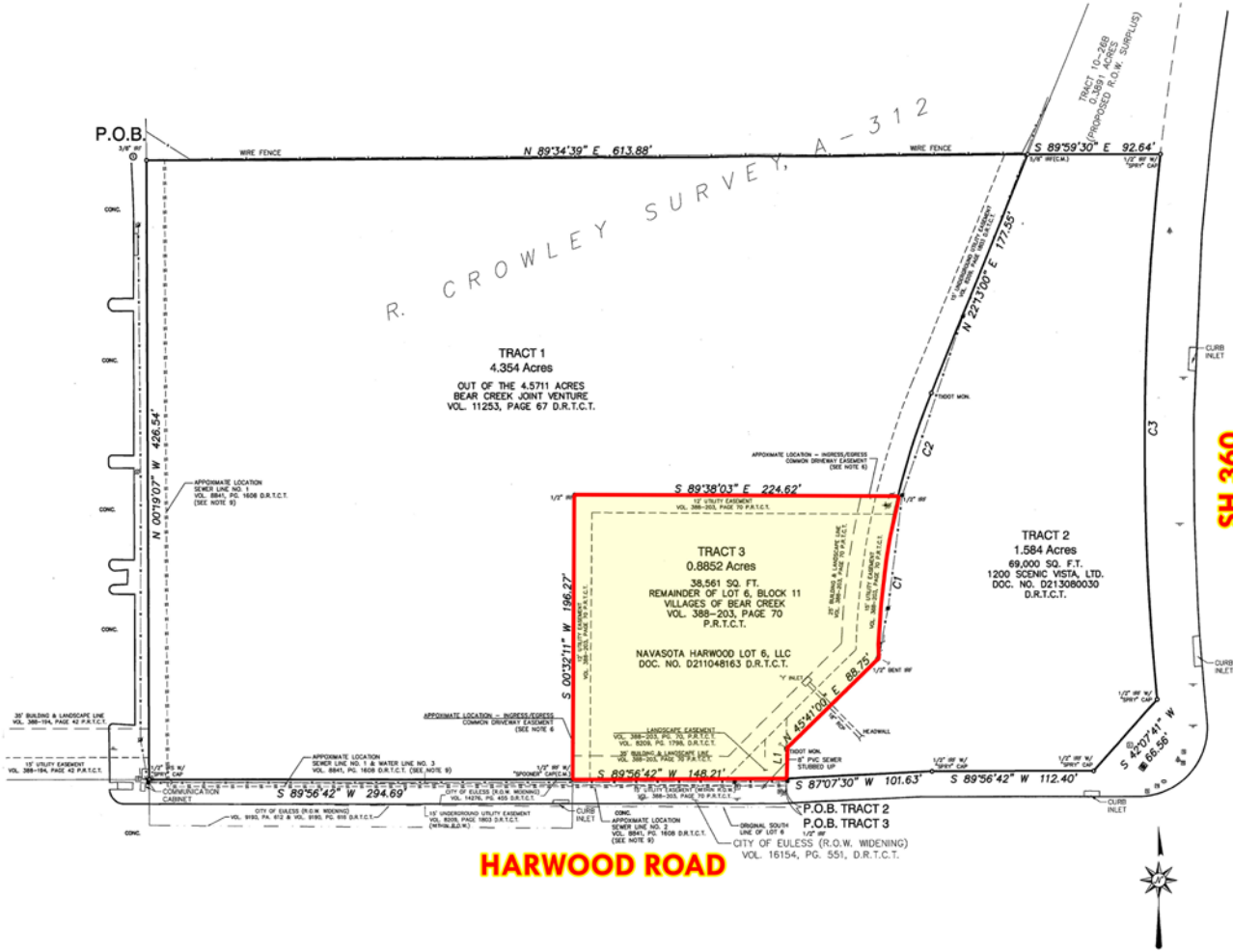
0.885 AC SITE

100 AC Residential

100 AC Commercial

LEASING | TENANT REPRESENTATION | LAND | INVESTMENT SALES | PROPERTY MANAGEMENT

HARWOOD 360 PAD SITE



- ### HIGHLIGHTS
- Pad Size - 0.885 Acres.
 - Zoning - E - Neighborhood Commercial.
 - Strategically situated just north of Euless Riverwalk, which consists of 200 acres of planned residential and commercial development.
 - Excellent freeway access and visibility.
 - Site located on “going home” side of Harwood Road and “going to work” side of SH 360.

DEMOGRAPHICS	1 MILE	3 MILE	5 MILE	TRAFFIC COUNTS	
2015 EST POPULATION	13,892	74,018	198,726	E. HARWOOD ROAD	14,521 VPD
2015 EST AVG HH INCOME	\$62,528	\$71,724	\$72,030	SH 360	77,000 VPD

