

Kansas City North - 9,650 SF 3-Building Church Campus



Located in Thriving Residential Area

- Rectory House on the Property
- Adjacent to Gracemor Park and Trail
- Seperate Storage building
- Conveniently located by I-435 and NE 48th Street
- View Property Here: <https://vimeo.com/416489009/d1be53a8a2>

For more information:

Michael R. Block, CPM
816.932.5549
mblock@blockllc.com

Christian Wead
816.412.84
cwead@blockllc.com

Beau Bradshaw
816.932.5515
bbradshaw@blockllc.com

The information contained in this marketing flyer is presented as general information only. Block Real Estate Services, LLC makes no representation as to its accuracy. This information is not intended as legal, financial or real estate advice and must not be relied upon as such. You should make your own inquiries, obtain independent inspections, and seek professional advice tailored to your specific circumstances before making any legal, financial or real estate decisions.

Building Specifications

Land Size:	Acres 3.57 (155,509 SF)
Church Building	6,600 SF 2 story building
Rectory Building:	1,500 SF residence
Storage Building:	Approx: 1,250 (50x25)
Total Building Area:	9,650 SF
Parking:	96 Striped space, room for 30+ more car parking, Front Drive-thru
HVAC:	30 Ton Unit
Roof Type:	Asphalt Shingle
Seating:	400-450 People
Lower Level:	Full commercial kitchen and social hall
Legal Description:	GRACEMOR 2nd PLAT PT LT A BLK 15 A/K/A TR 1 G-179 BEG MOST WLY COR LT A, NELY405.91, SE396.37, SW380.58 NWLY395.57 TO POB
Parcel ID:	14816000500100

For more information:

Michael R. Block, CPM
816.932.5549
mblock@blockllc.com

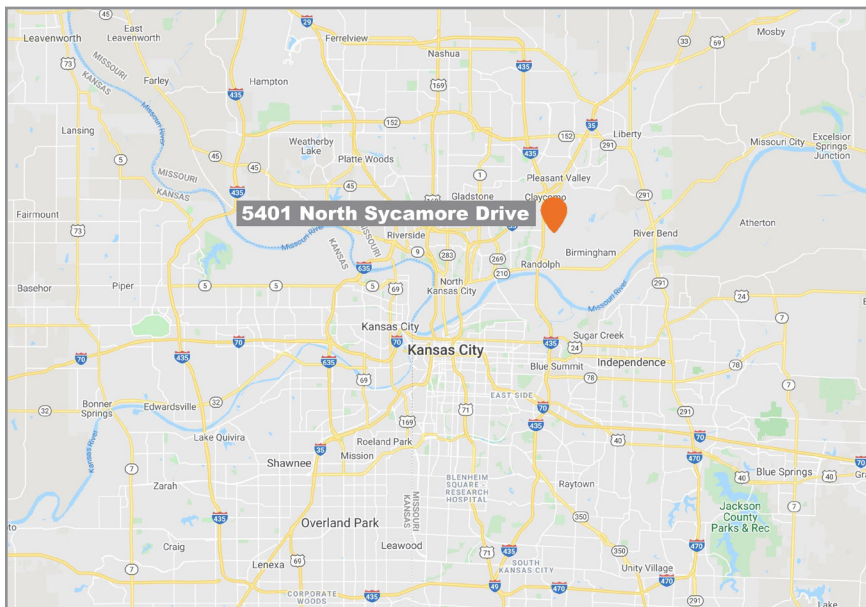
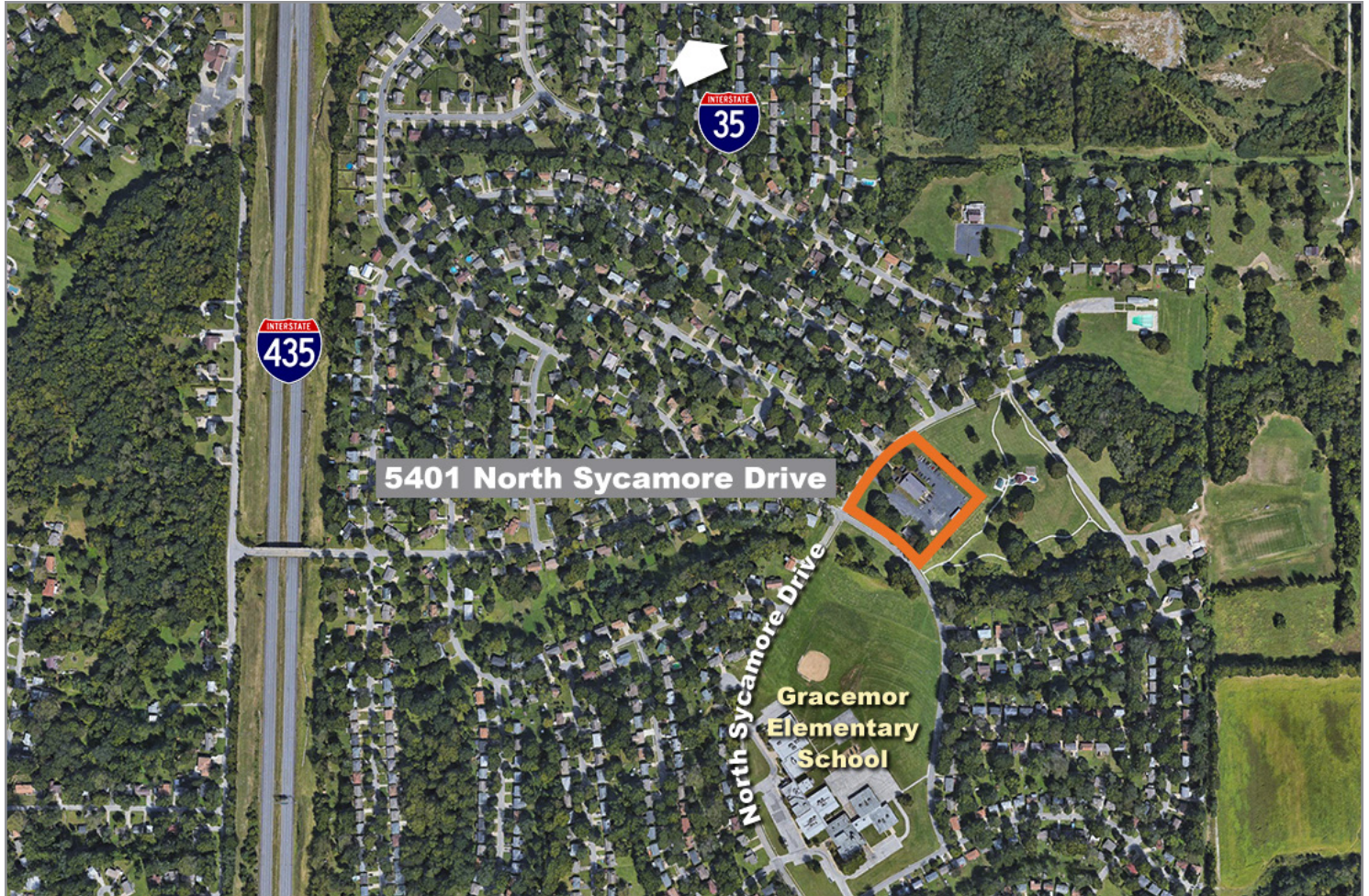
Christian Wead
816.412.84
cwead@blockllc.com

Beau Bradshaw
816.932.5515
bbradshaw@blockllc.com

5401 North Sycamore Drive

Kansas City, Missouri 64119

For Sale



For more information:

Michael R. Block, CPM
816.932.5549
mblock@blockllc.com

Christian Wead
816.412.84
cwead@blockllc.com

Beau Bradshaw
816.932.5515
bbradshaw@blockllc.com