

Prime Retail Storefront  
Columbus Circle Submarket

Park Towers South  
315 W 57<sup>th</sup> Street, Manhattan



# ABOUT

---



## LOCATION

315 West 57th Street (57th Street between 8th & 9th Avenue)

- Located at the base of Park Towers South, a luxury mixed-use building containing 273 apartments and 100 professional office suites

## SPACE

~920SF prime street-level storefront space

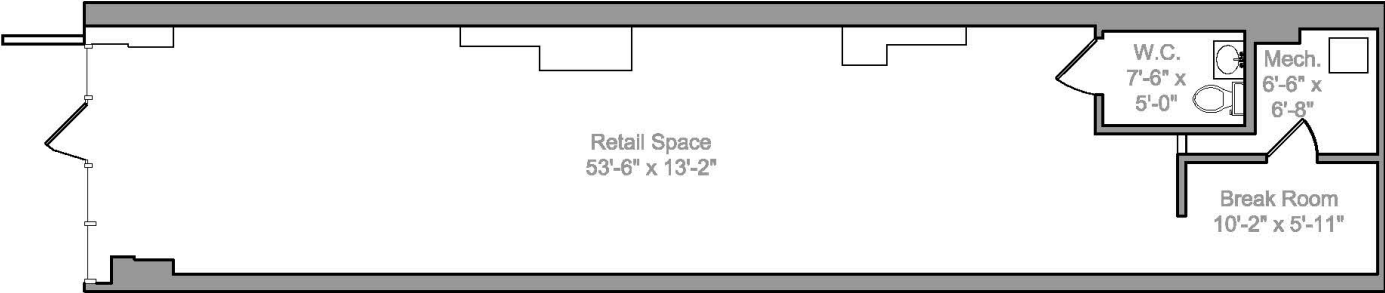
- Dedicated Central HVAC System
- 13' of Street Level Frontage
- Private Bathroom

## NEIGHBORHOOD

- Park Towers South is situated in a prime location, steps from Columbus Circle and the A C B D 1 Subways at 59 St-Columbus Circle, one of the top 10 busiest subway stations in NYC.
- In close proximity to the Deutsche Bank Center (f/k/a Time Warner Center), Hearst Tower, Whole Foods, Starbucks, Duane Reade and Mandarin Oriental.
- Surrounded by a dense student population with area colleges and universities including Fordham, John Jay and NYIT, and a strong hospital employee presence from nearby Mt. Sinai West.



# FLOORPLAN





LILITH

NAIL DAY

CITYMD

URGENT CARE

SERVING CHILDREN & ADULTS

OPEN TILL 10pm EVERY DAY

NO APPOINTMENT NEEDED

MOST INSURANCE ACCEPTED

Boardwalk & H  
199 Sandl  
710 p  
415-5



ABA TURKISH RESTAURANT  
R GRILL

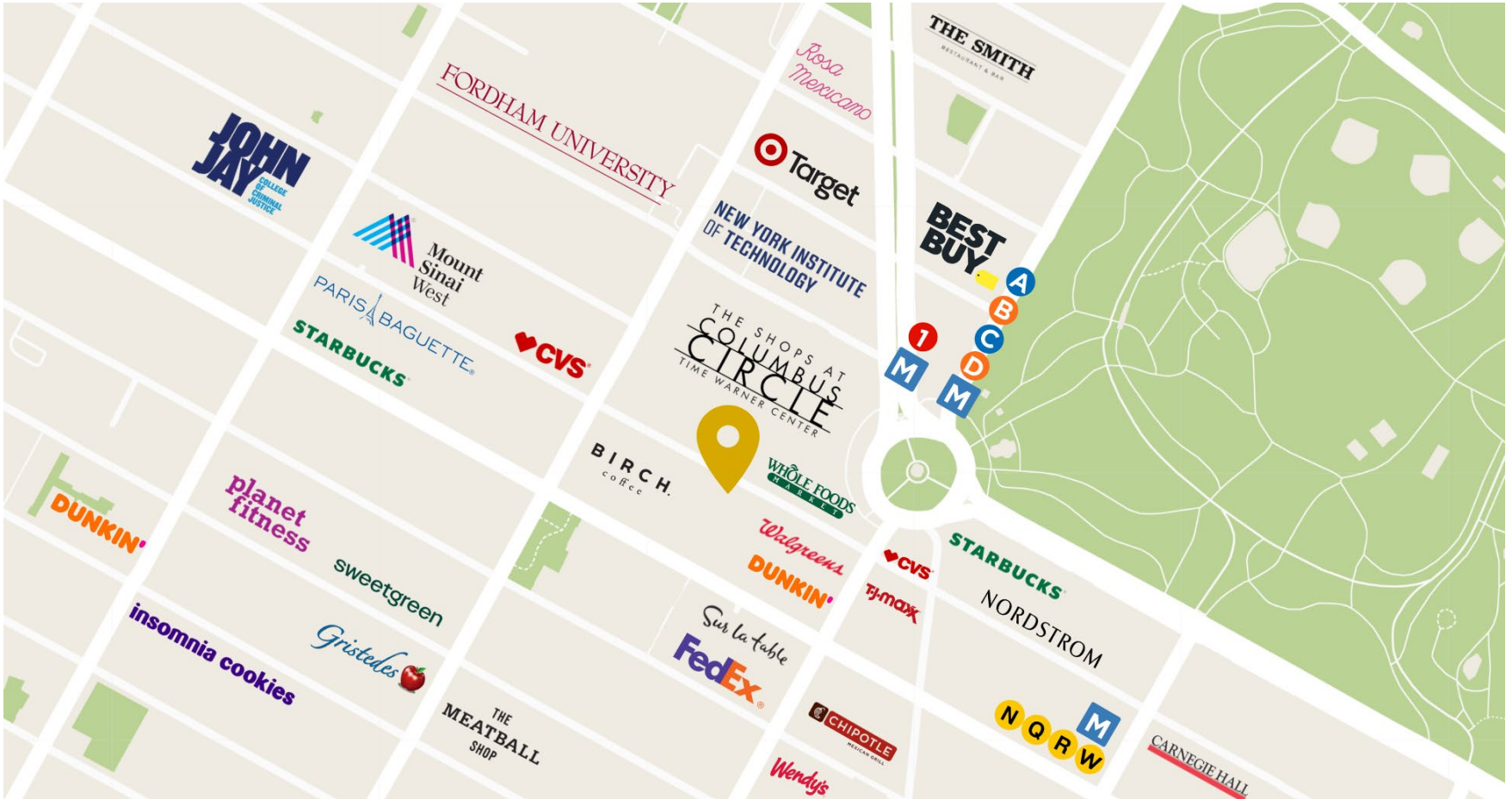
URGENT CARE

315

BLUSHINGTON EUROPEAN WAX CENTER  
BLUSHINGTON  
e are beauty

\$525  
OPEN 24 HOURS  
MONTHLY  
PARKING  
dock

# AREA MAP



## CONTACT

Brett Obletz  
914.940.4502  
commercial@goldprop.com